



Indurabond

ALUMINIUM COMPOSITE PANELS

Z-angle Fixing System

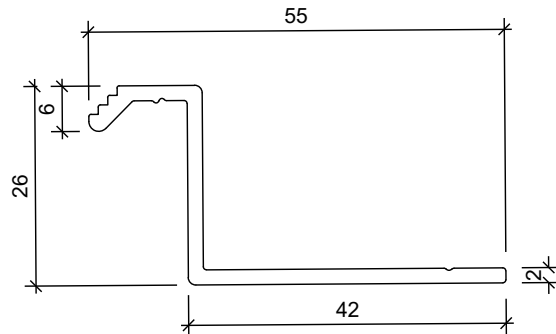
Version 2.5
January 2025

CONTENTS

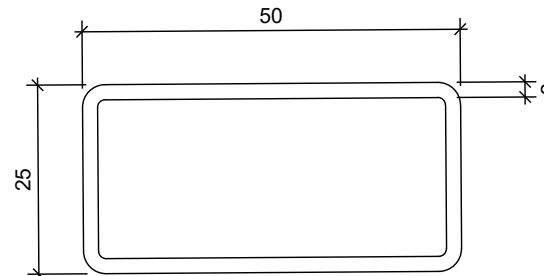
| | |
|--|----|
| 1. Components | 4 |
| 2. Vertical Panel Joint | 5 |
| 3. Horizontal Panel Joint | 6 |
| 4. Inter-Storey Joint | 7 |
| 5. Internal Panel Corner | 8 |
| 6. External Panel Corner | 9 |
| 7. Wall To Soffit - A | 10 |
| 8. Wall To Soffit - B | 11 |
| 9. Base Detail - A | 12 |
| 10. Base Detail - B | 13 |
| 11. Base Detail - C | 14 |
| 12. Precast Wall - A | 15 |
| 13. Precast Wall - B | 16 |
| 14. Precast Wall - C | 17 |
| 15. Fibre Cement Internal Corner - A | 18 |
| 16. Fibre Cement Internal Corner - B | 19 |
| 17. Vertical Profiled Cladding Internal Corner | 20 |
| 18. Horizontal Profiled Cladding Internal Corner | 21 |
| 19. Pipe Penetration @ Soffit | 22 |
| 20. Vertical Profiled Metal Junction | 23 |
| 21. Parapet Option - A | 24 |
| 22. Parapet Option - B | 25 |
| 23. Parapet Option - C | 26 |
| 24. Parapet Option - D (w/ minimal upstand) | 27 |

CONTENTS

| | | |
|---|-------|----|
| 25. Parapet Top Joint | ----- | 28 |
| 26. Fascia To Soffit - A | ----- | 29 |
| 27. Fascia To Soffit - B | ----- | 30 |
| 28. Fascia To Soffit - C | ----- | 31 |
| 29. Fascia To Soffit - D | ----- | 32 |
| 30. Fascia To Soffit - E | ----- | 33 |
| 31. Eyebrow Sill Detail | ----- | 34 |
| 32. Typical Upstand Detail | ----- | 35 |
| 33. Typical Commercial Window Head | ----- | 36 |
| 34. Typical Commercial Window Sill | ----- | 37 |
| 35. Typical Commercial Window Jamb - A | ----- | 38 |
| 36. Typical Commercial Window Jamb - B | ----- | 39 |
| 37. Typical Residential Window Head | ----- | 40 |
| 38. Typical Residential Window Sill | ----- | 41 |
| 39. Typical Residential Window Jamb - A | ----- | 42 |
| 40. Typical Residential Window Jamb - B | ----- | 43 |
| 41. Wall Box Penetration Detail | ----- | 44 |
| 42. Wall Pipe Penetration Detail | ----- | 45 |
| 43. Fin Mounting Detail | ----- | 46 |
| 44. General Differential Movement | ----- | 47 |
| 45. Meter Box Penetration | ----- | 48 |
| 46. Aluminium Stiffener To Indurabond | ----- | 49 |

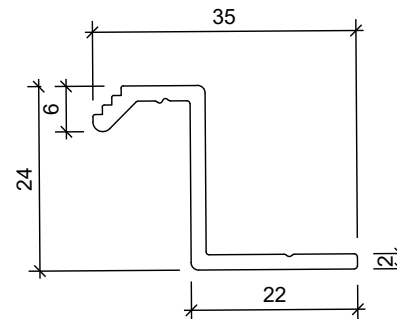


Indurafix High Z-Angle (First Fix)
Alloy & Temper: 6060-T6
Colour: Mill Finish

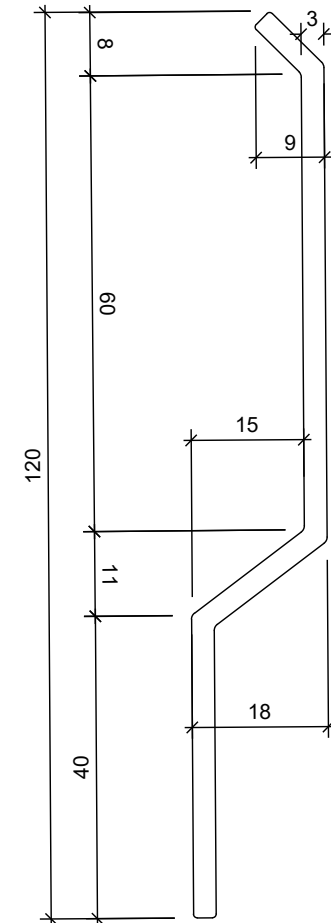


RHS Stiffener 50X25X2mm
Alloy & Temper: 6060-T6
Colour: Mill Finish
Adhesive Glue: Minimum 2mm thick & minimum 50mm wide strip of Sabrebond SMP60
Alignment: Stiffener to be parallel to short edge

Fire Cavity Barrier (By Others)
- Ryanfire Intuspan Fire Cavity Barrier or equivalent, where required, to be installed in accordance with C/AS2



Indurafix Low Z-Angle (Second Fix)
Alloy & Temper: 6060-T6
Colour: Mill Finish

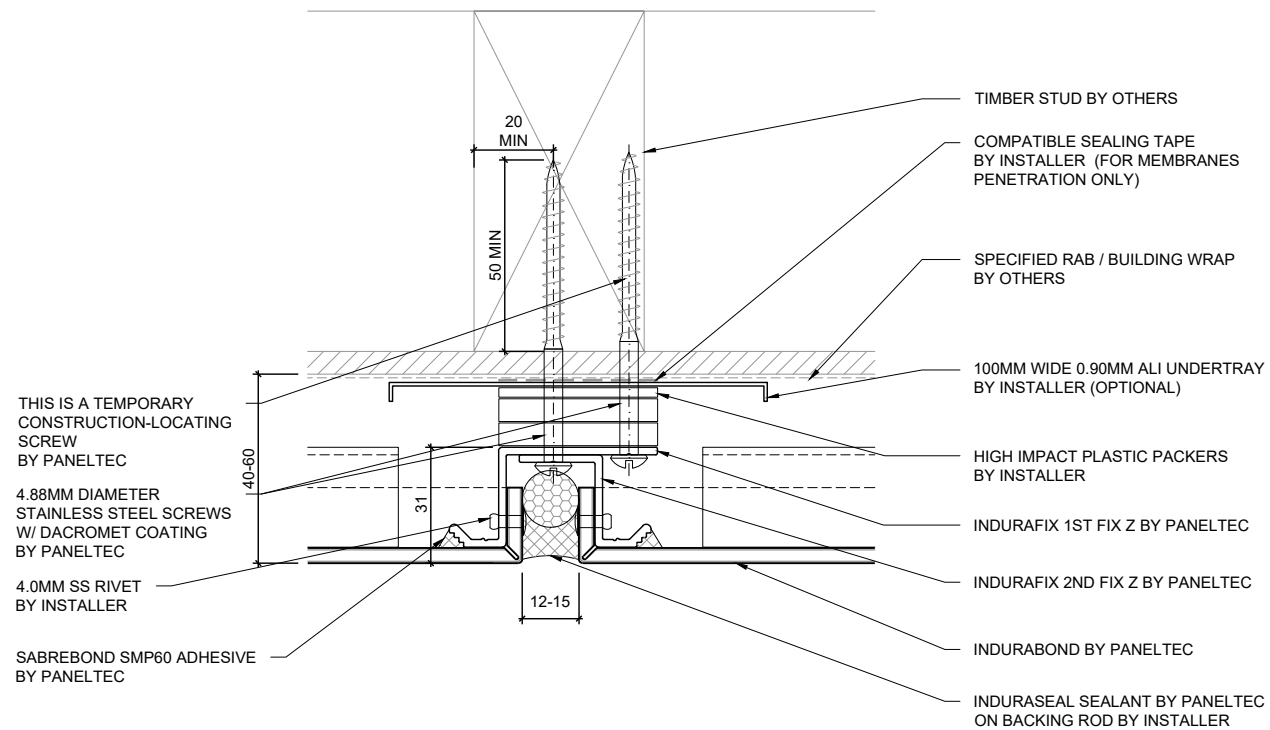


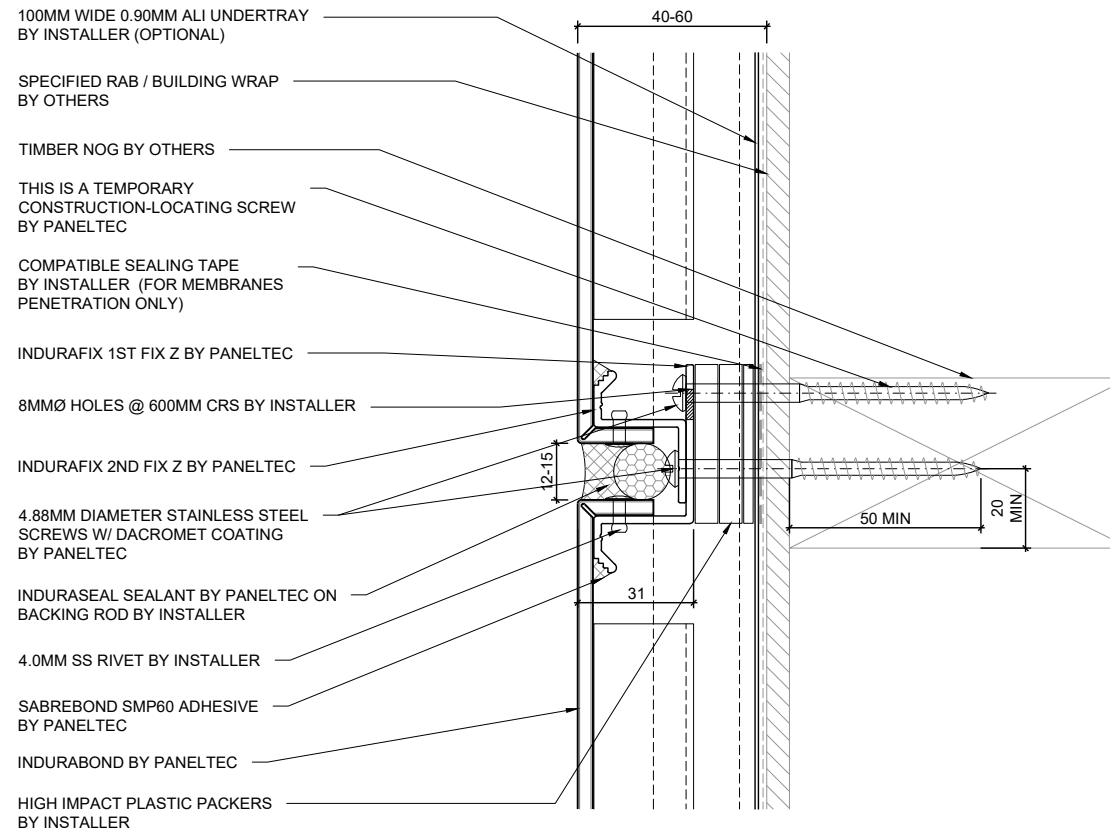
Indurabase Extrusion
Alloy & Temper: 6060-T6
Colour: Mill Finish

Fixing Requirements of First & Second Fix Z-Angle

1. **Fixing to Timber Substrate**
Proposed Fastener Diameter: 4.88mm Screw
Minimum Timber Embedment Depth: 50mm or as specified in the detail
Minimum Timber Edge Distance: 20mm
Minimum Aluminium Edge Distance: 10mm
2. **Fixing to Steel Substrate**
Proposed Fastener Diameter: 5.59mm Screw
Minimum Steel Edge Distance: 12mm
Minimum Aluminium Edge Distance: 12mm
3. **Fixing to Concrete Substrate**
Proposed Fastener: M6 Hilti HUS4-HR or M6 Anzor AnchorMark G316SS
Minimum Concrete Embedment Depth: 55mm
Minimum Concrete Edge Distance: 50mm
Minimum Aluminium Edge Distance: 12mm

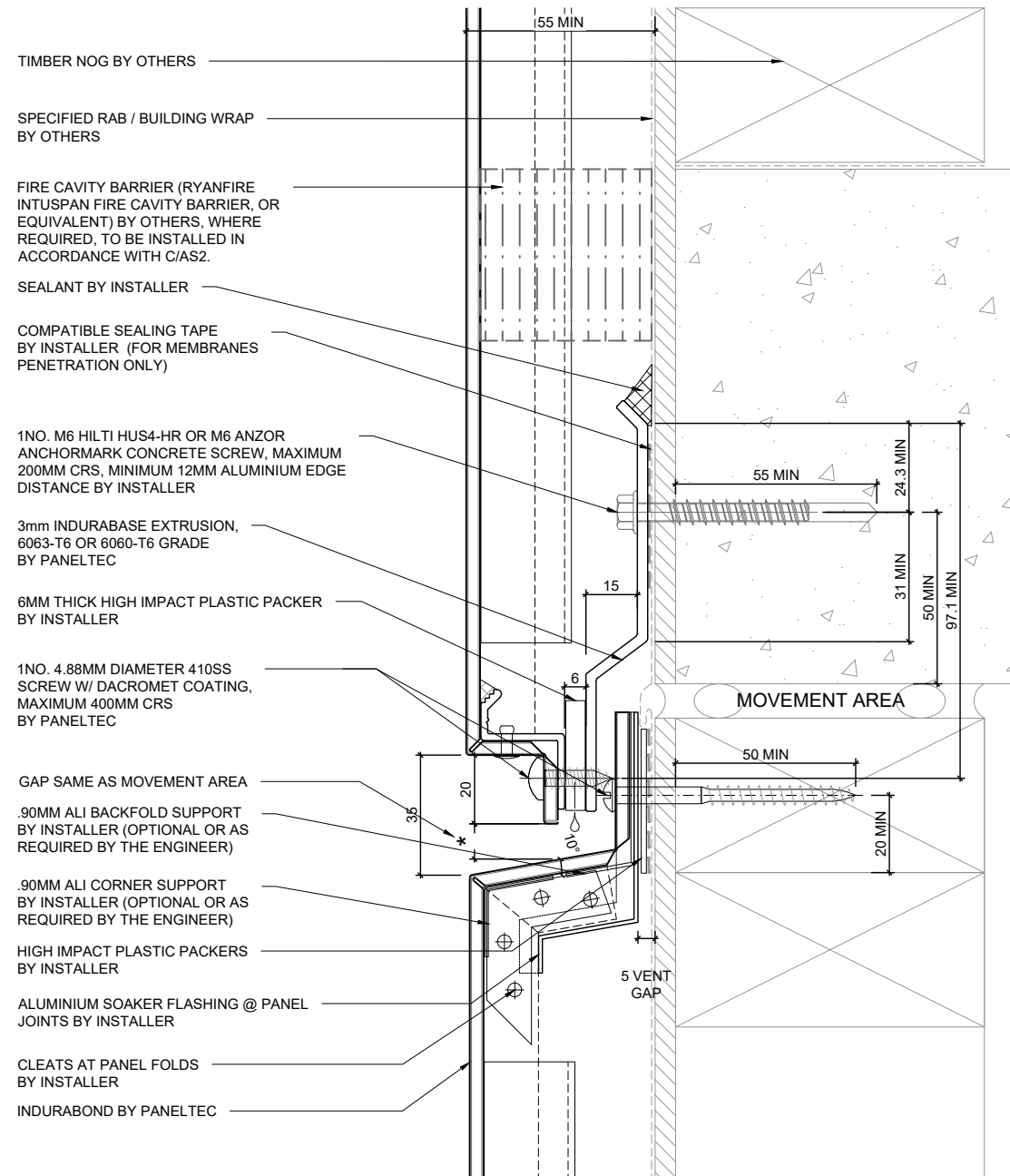
For stiffener spacings refer to the Indurabond Aluminium Composite Panels (Z-Angle Fixing System) Engineering Judgement & for more information refer to Induracore Aluminium Laminated Panels (Z-Angle Fixing System). Structure shown on the typical details are on timber framing. Fixing system can also be applied on steel framing.

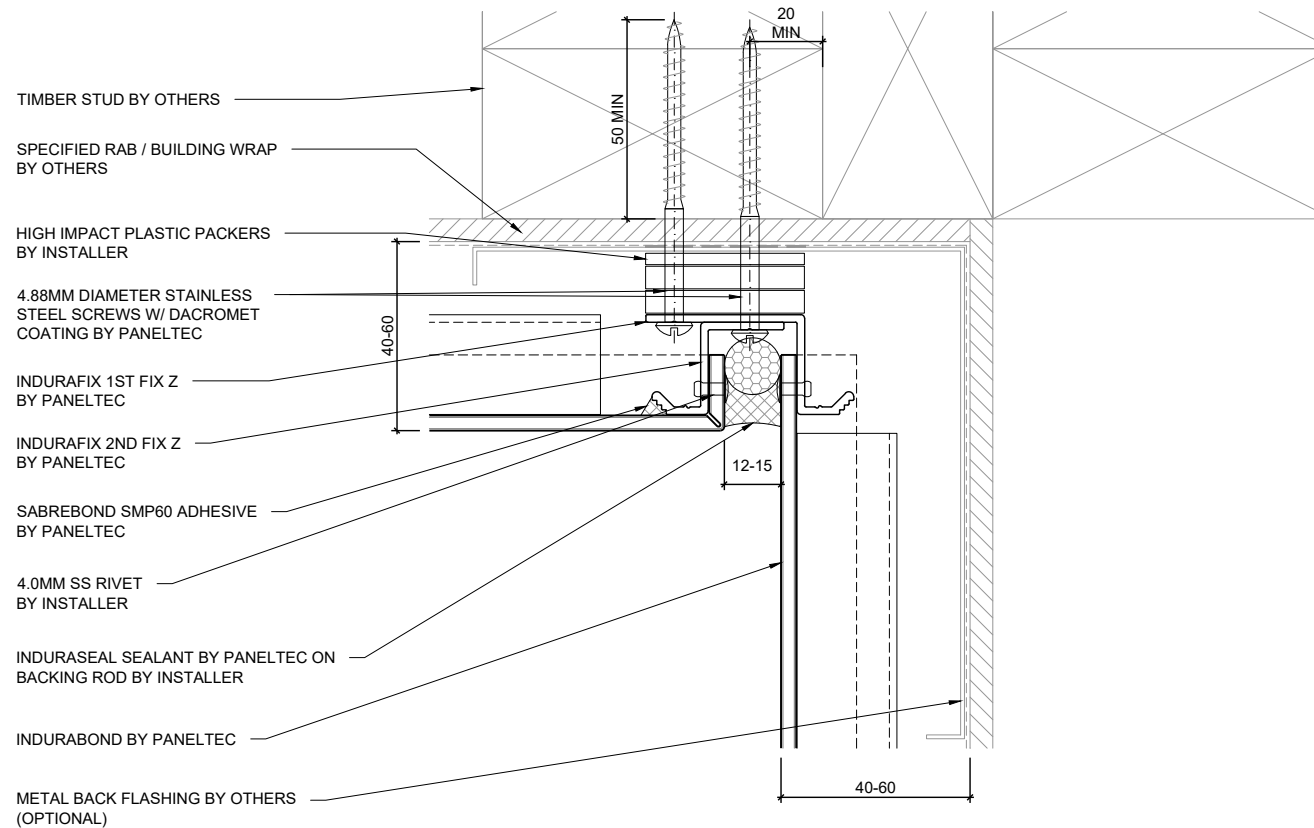


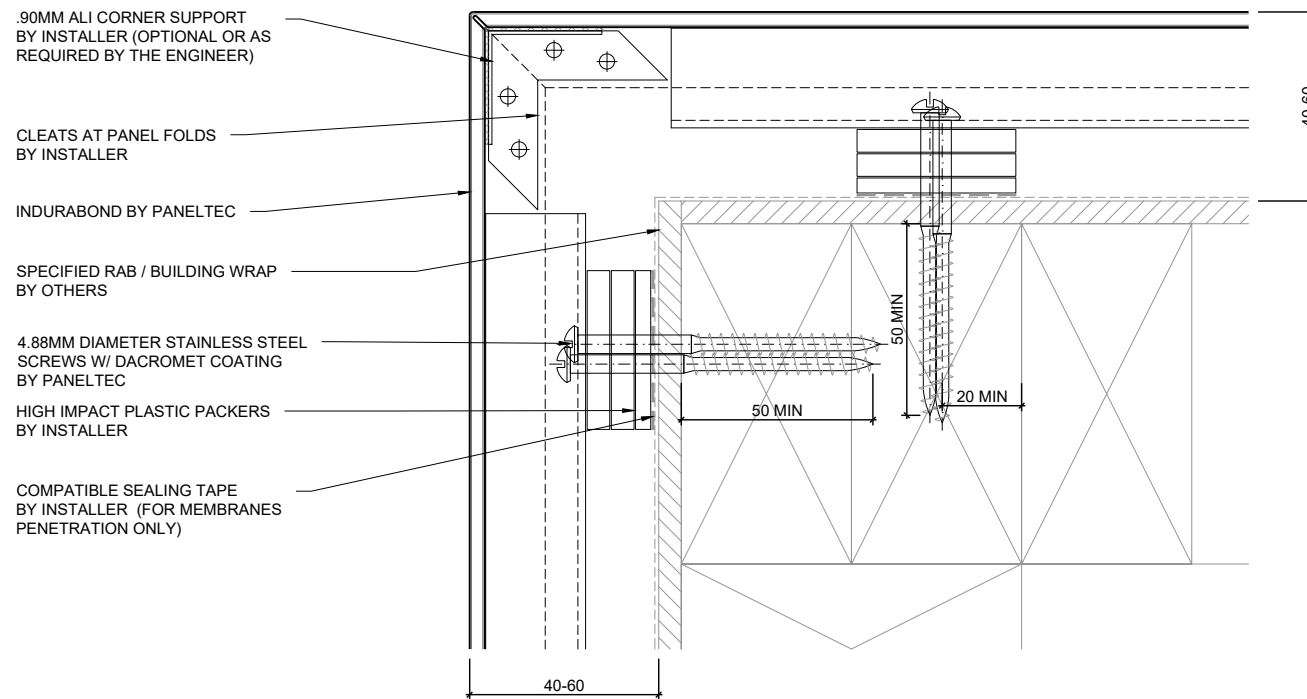


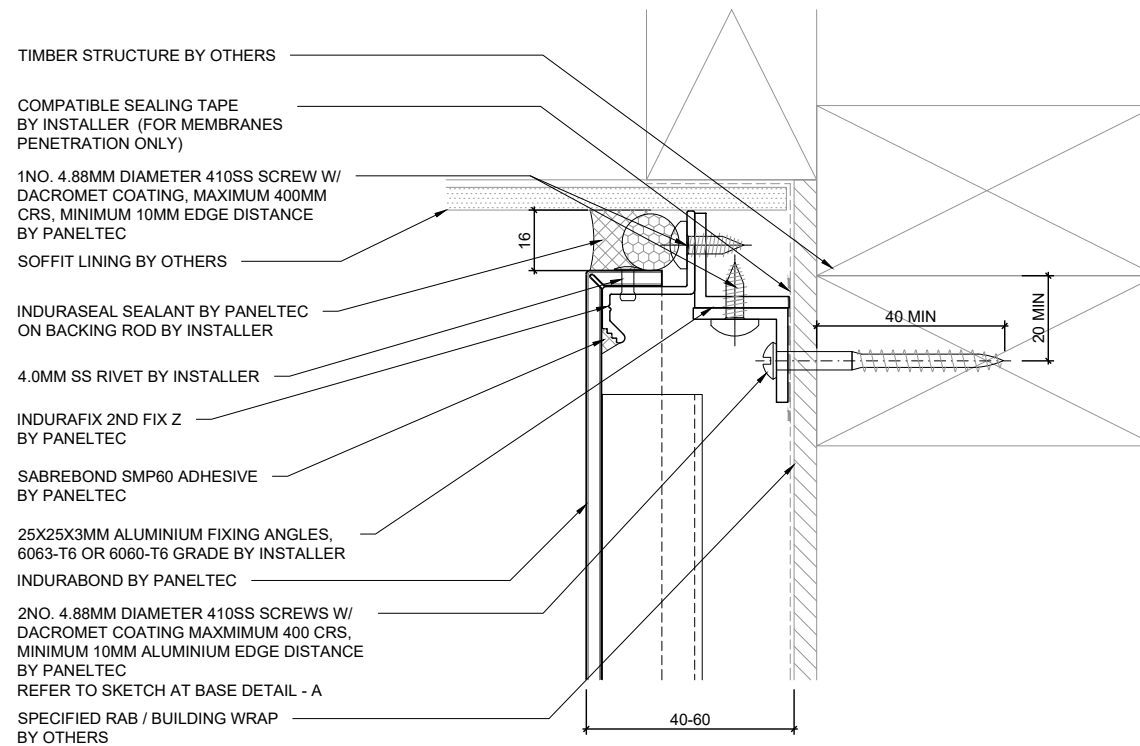
4. INTER-STOREY JOINT (SECTION DETAIL)

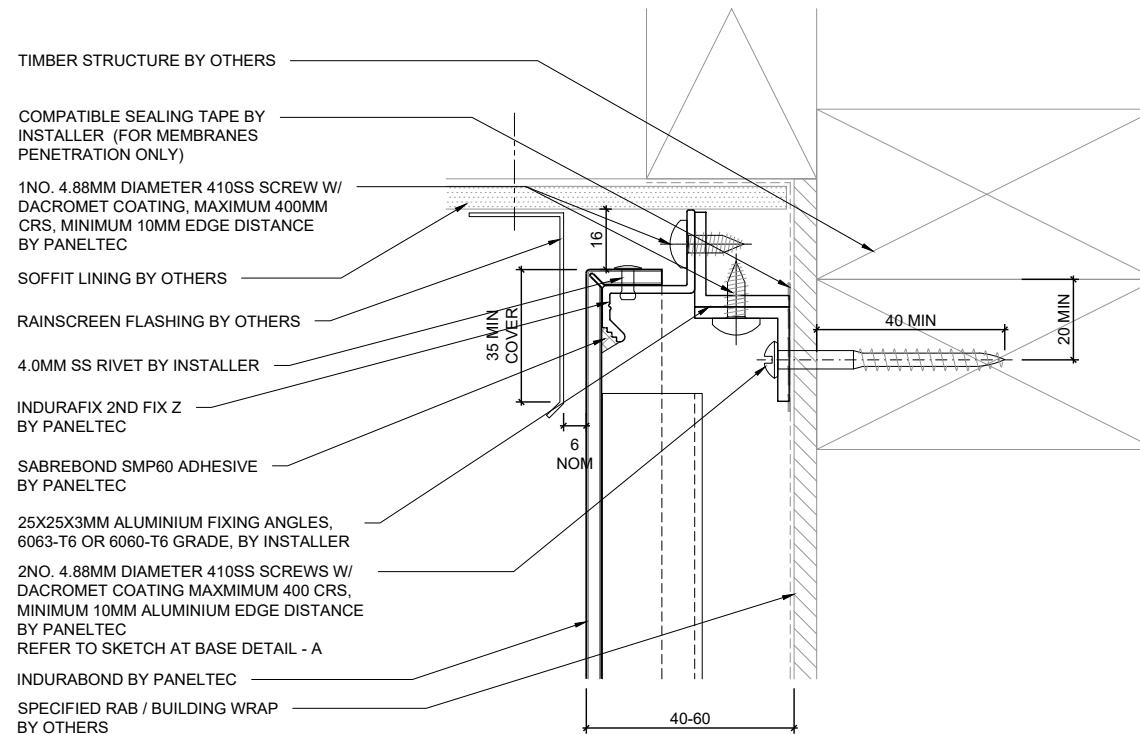
Drawing Scale 1:2

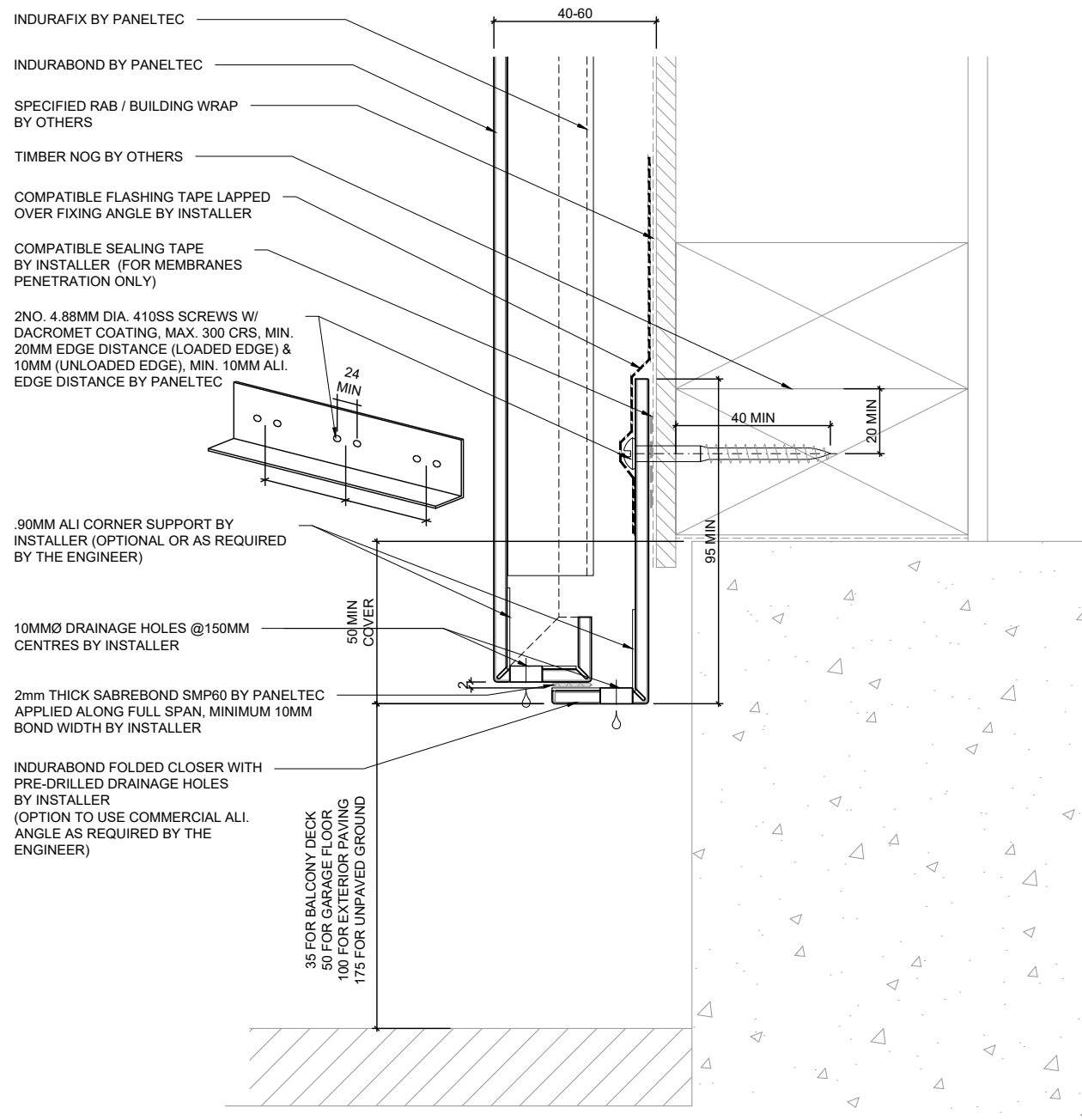


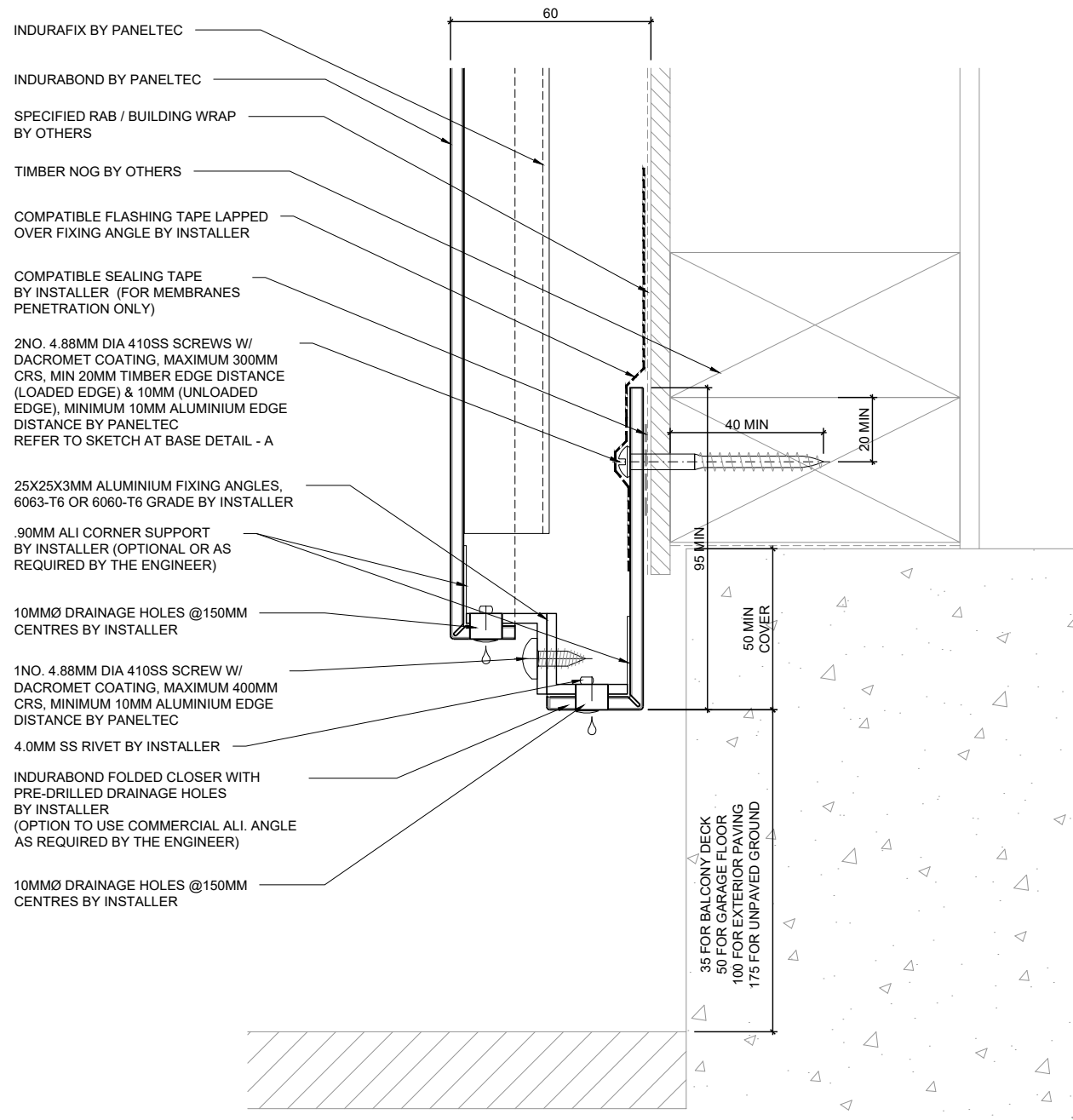


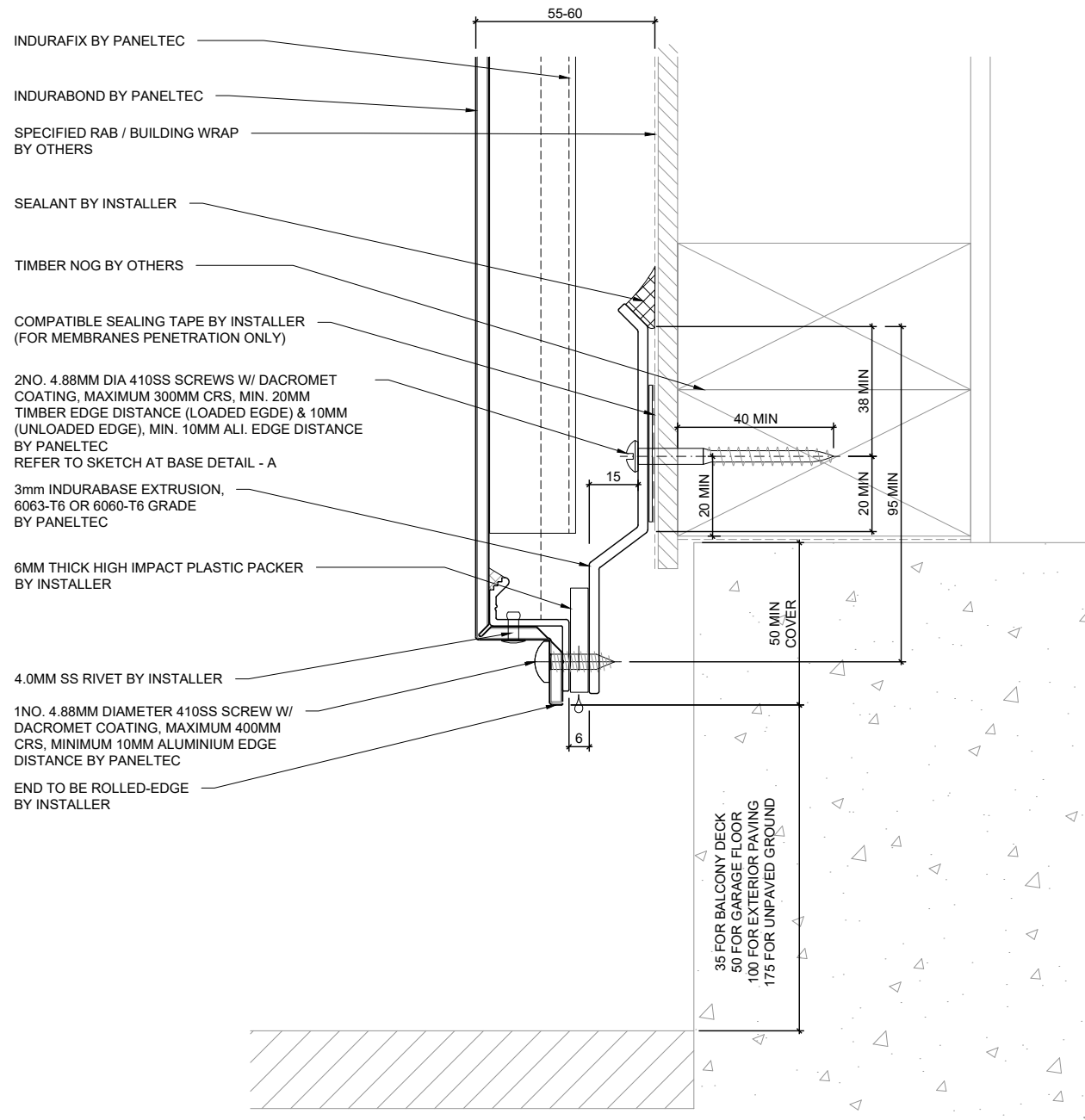


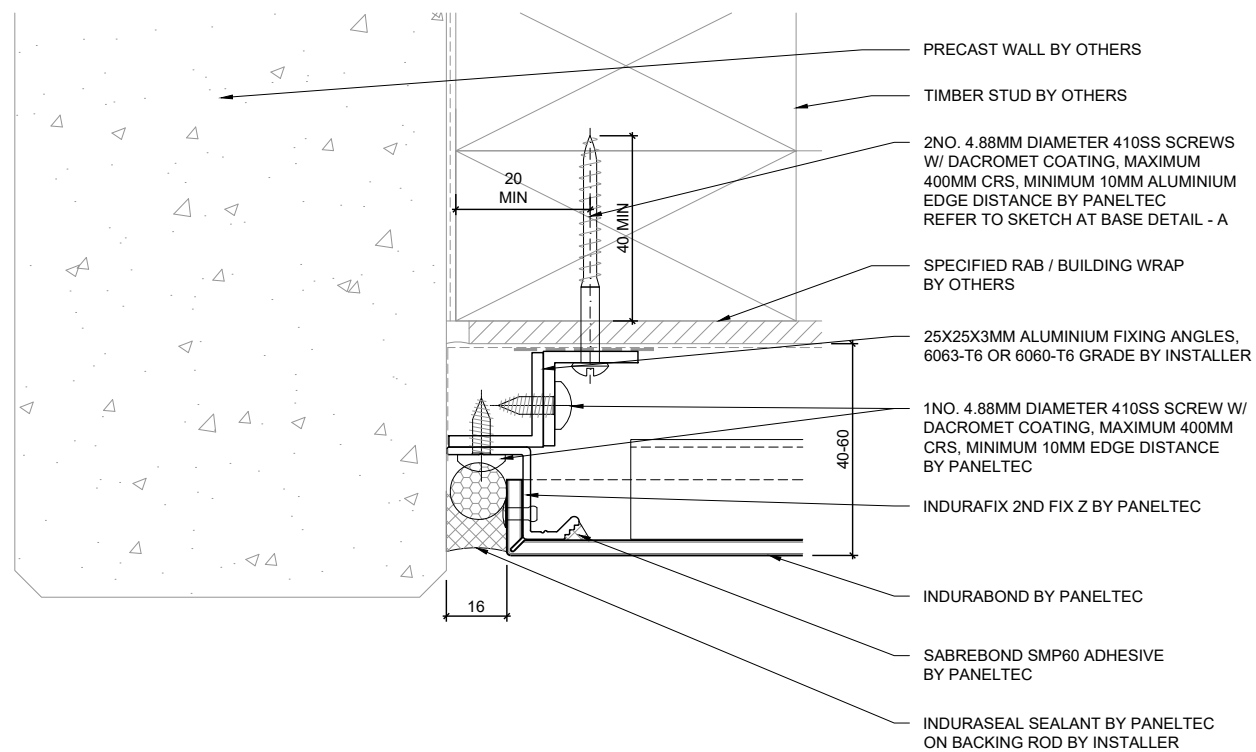


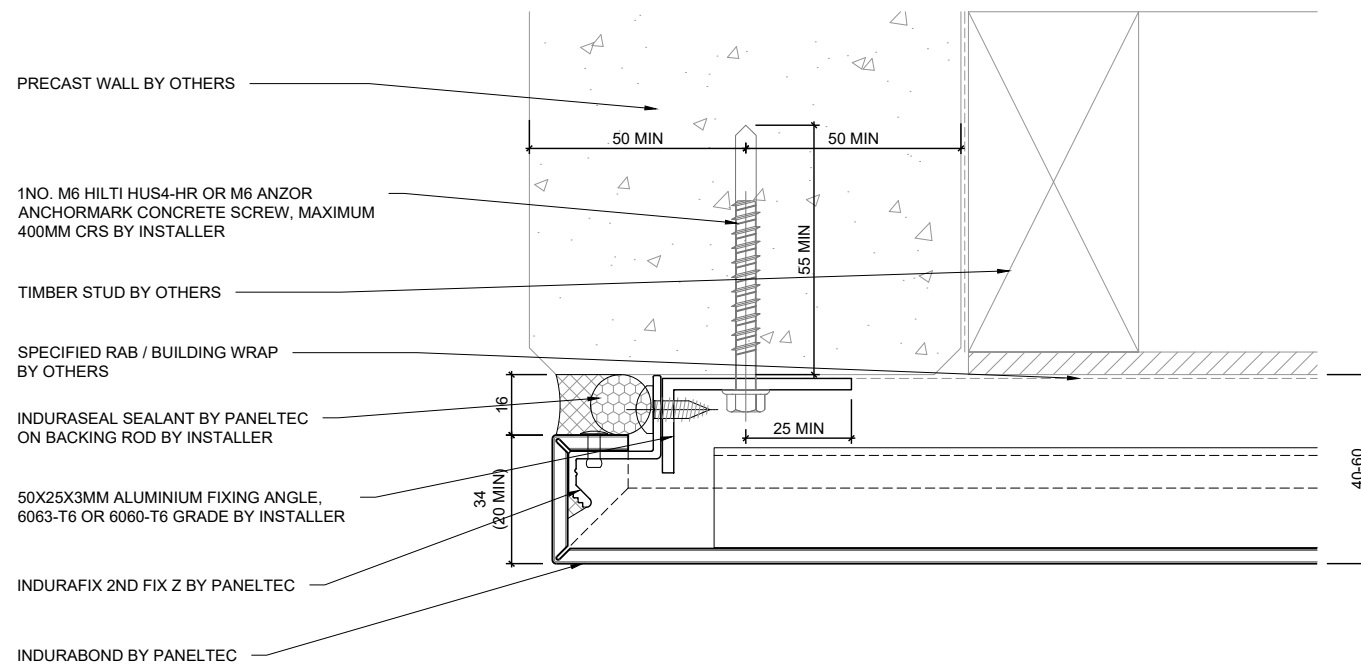


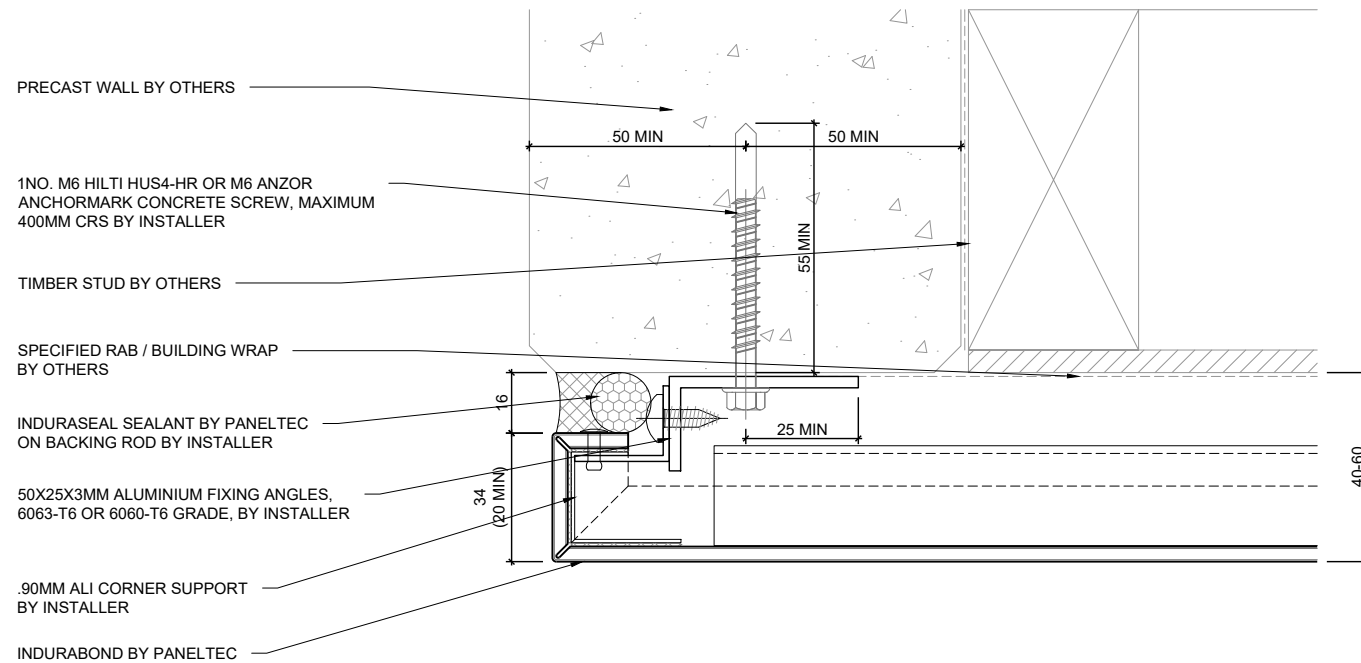


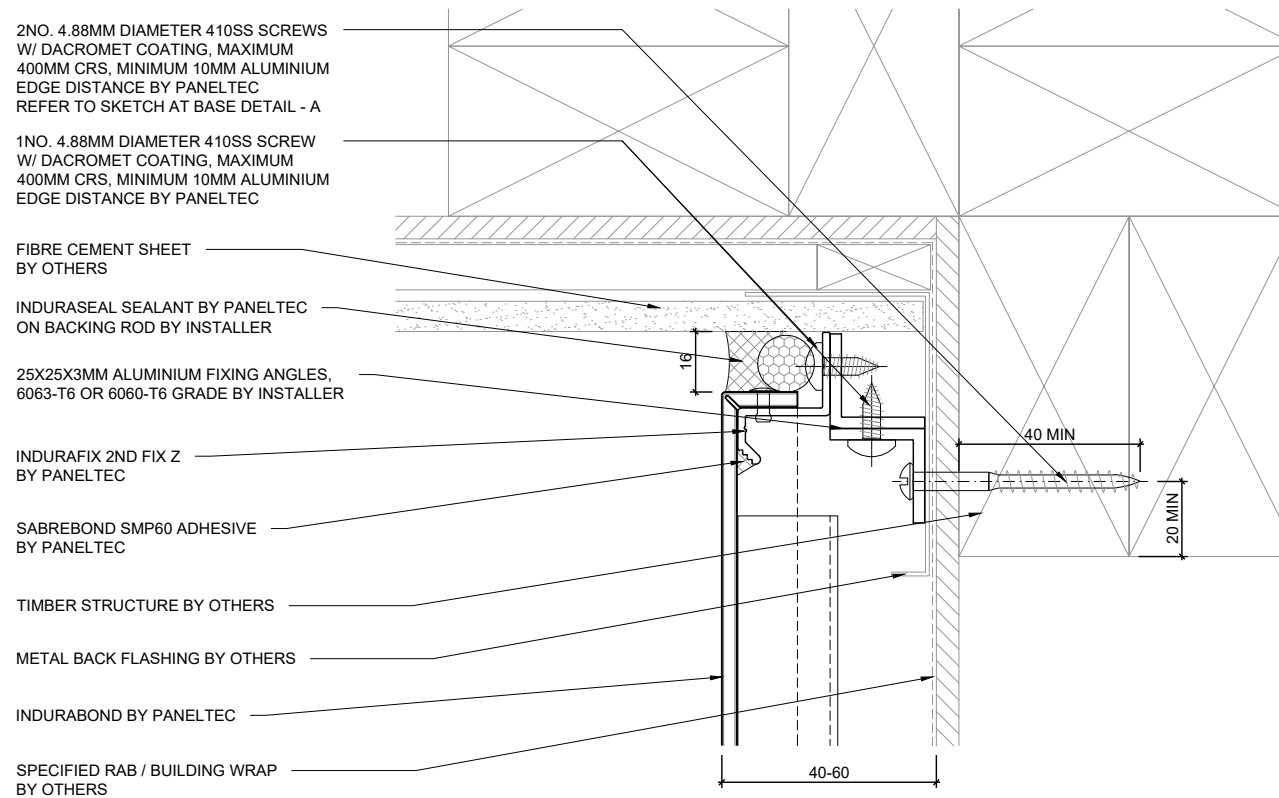


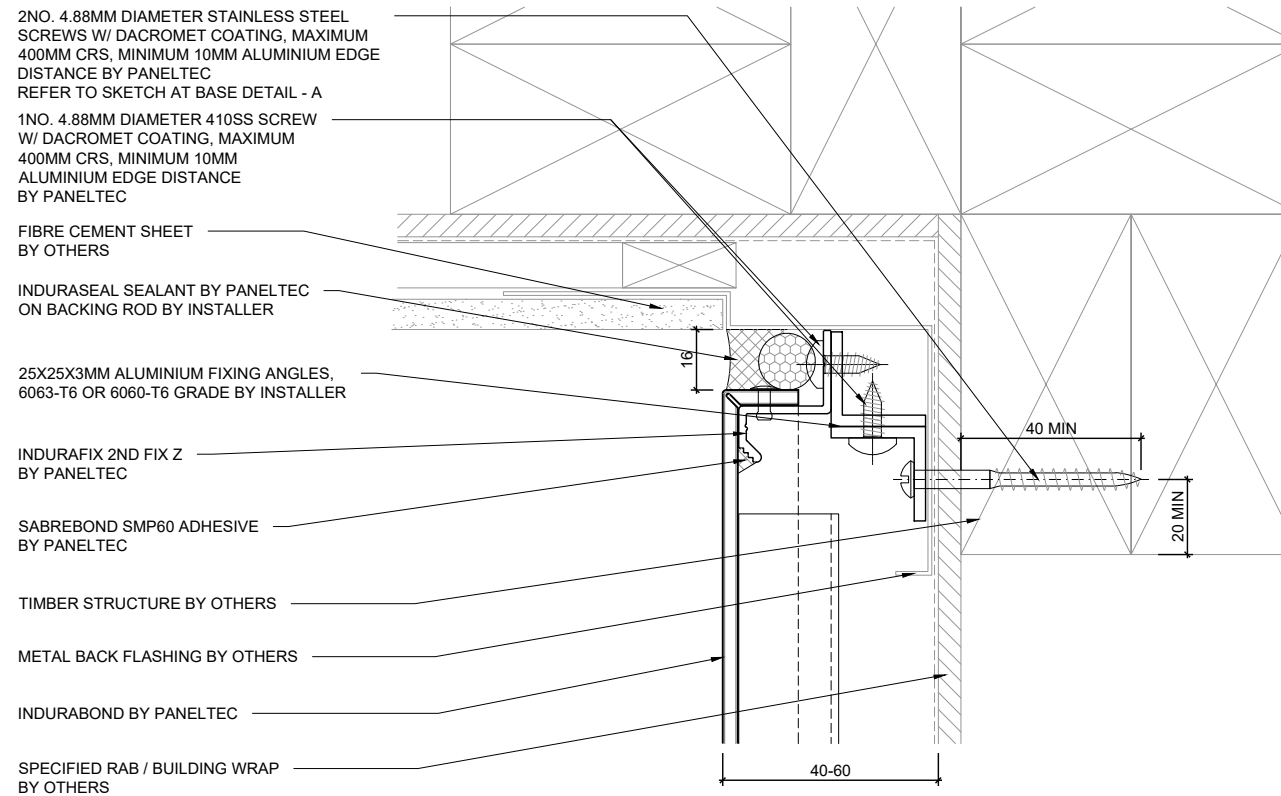


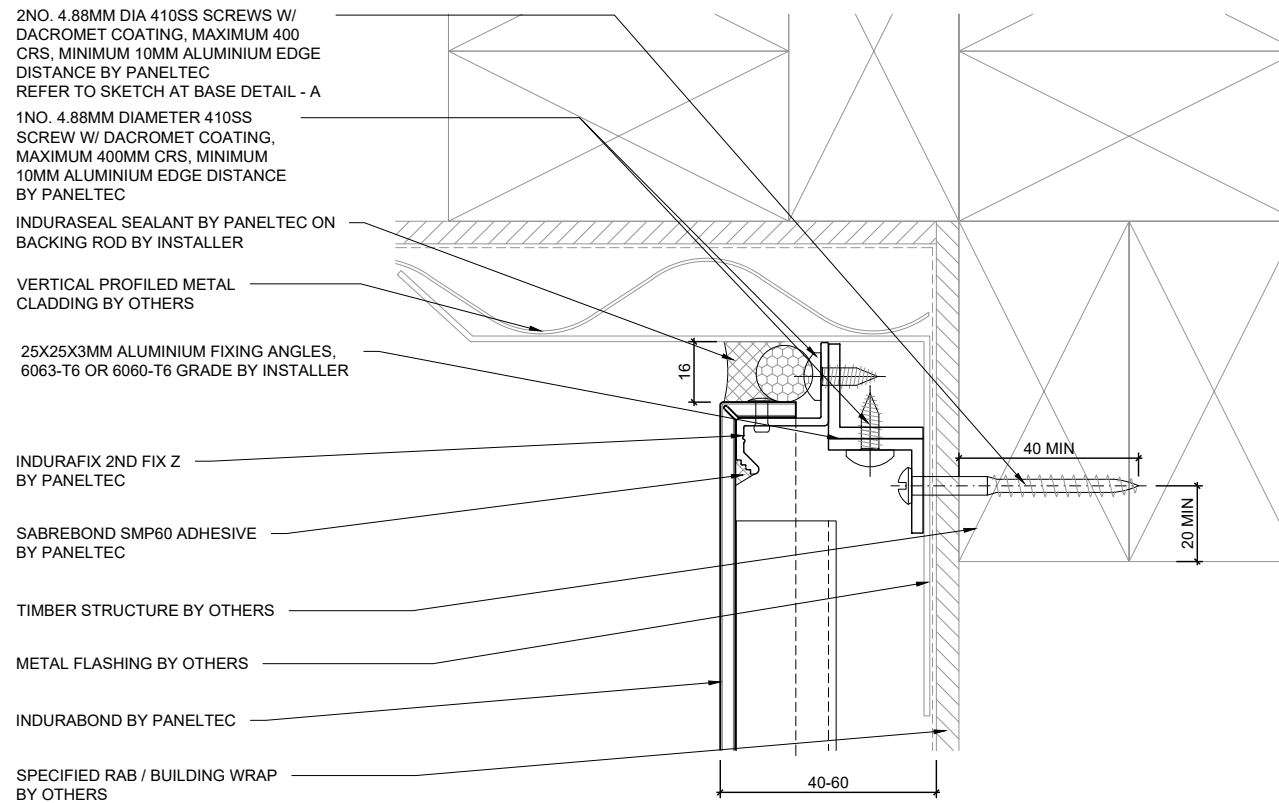


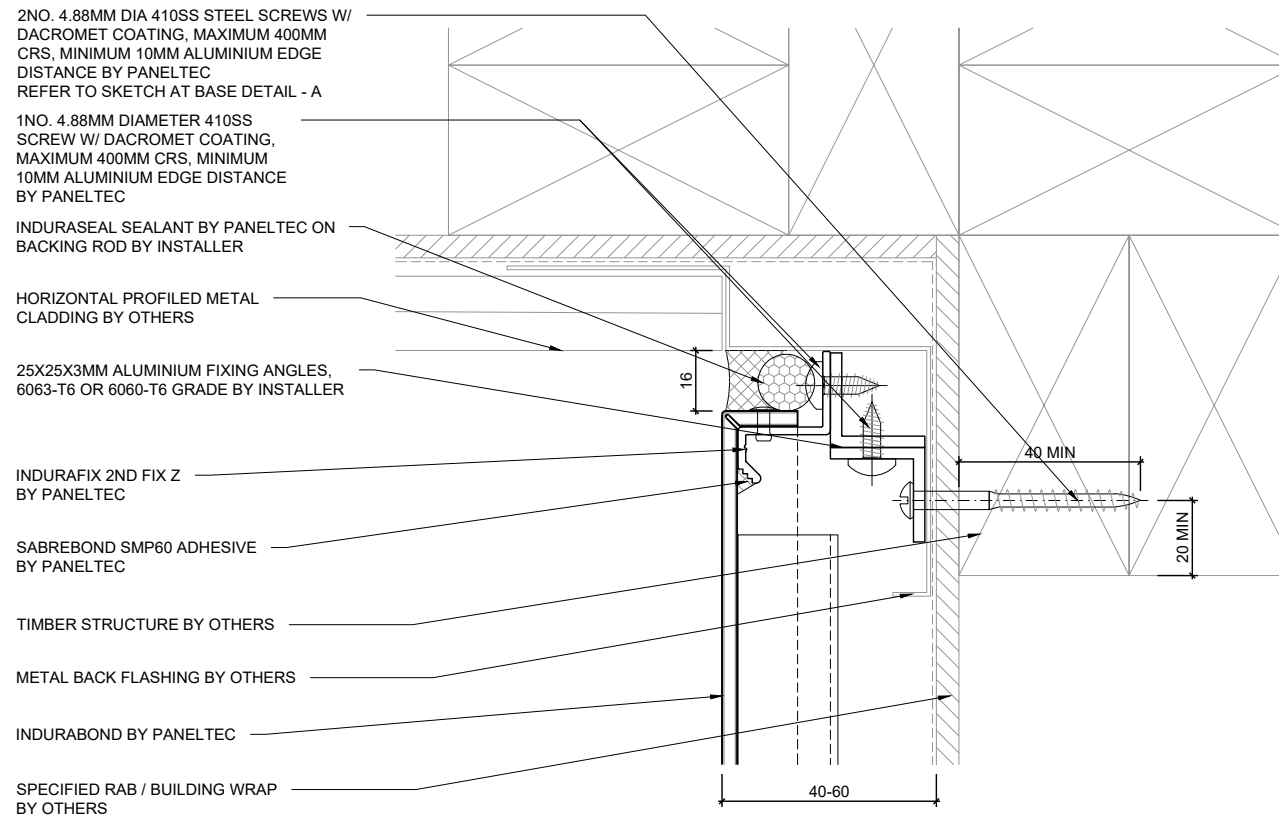


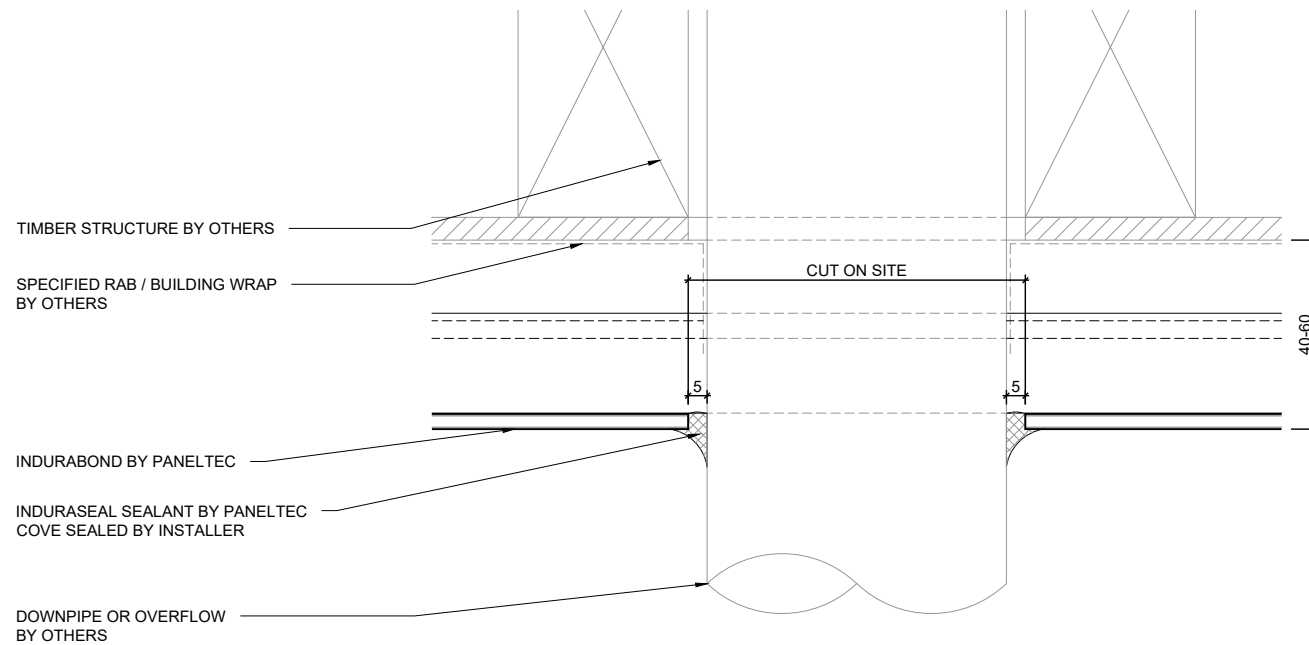


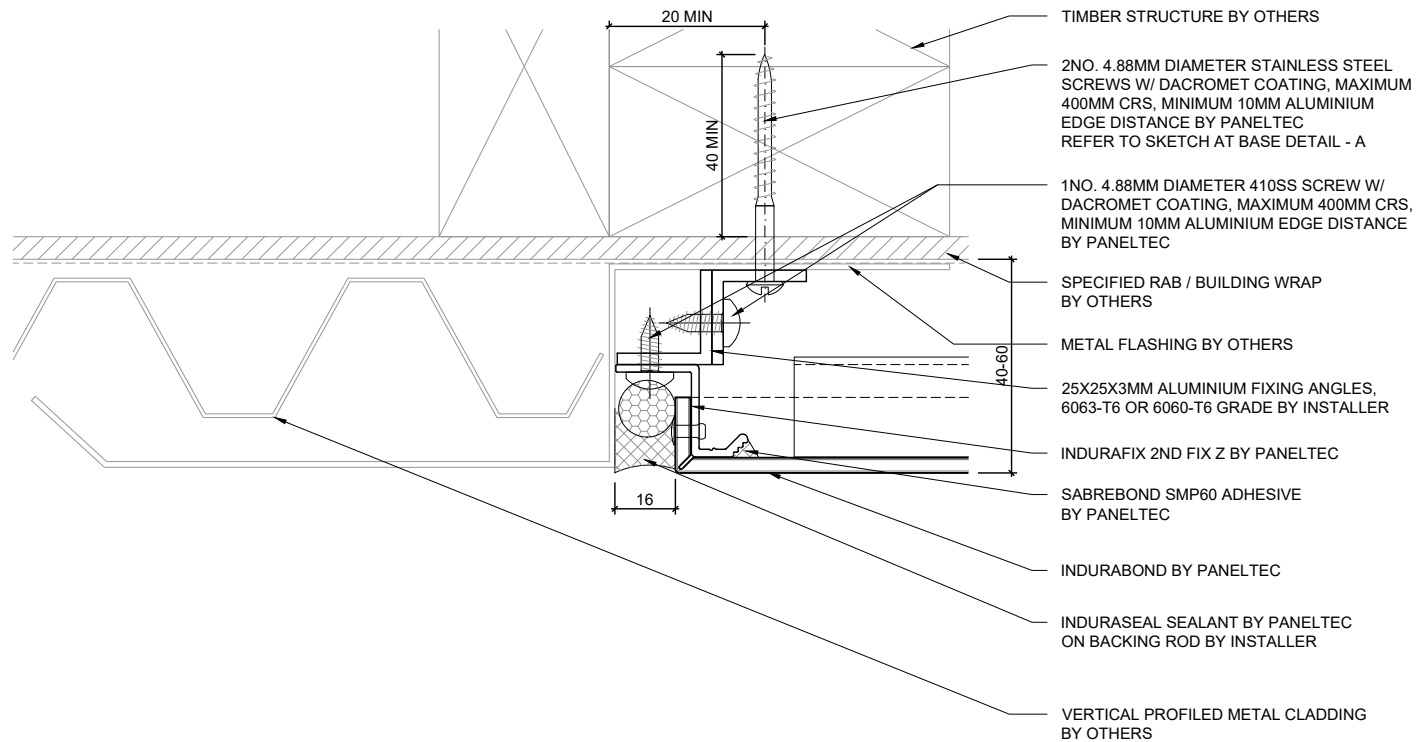


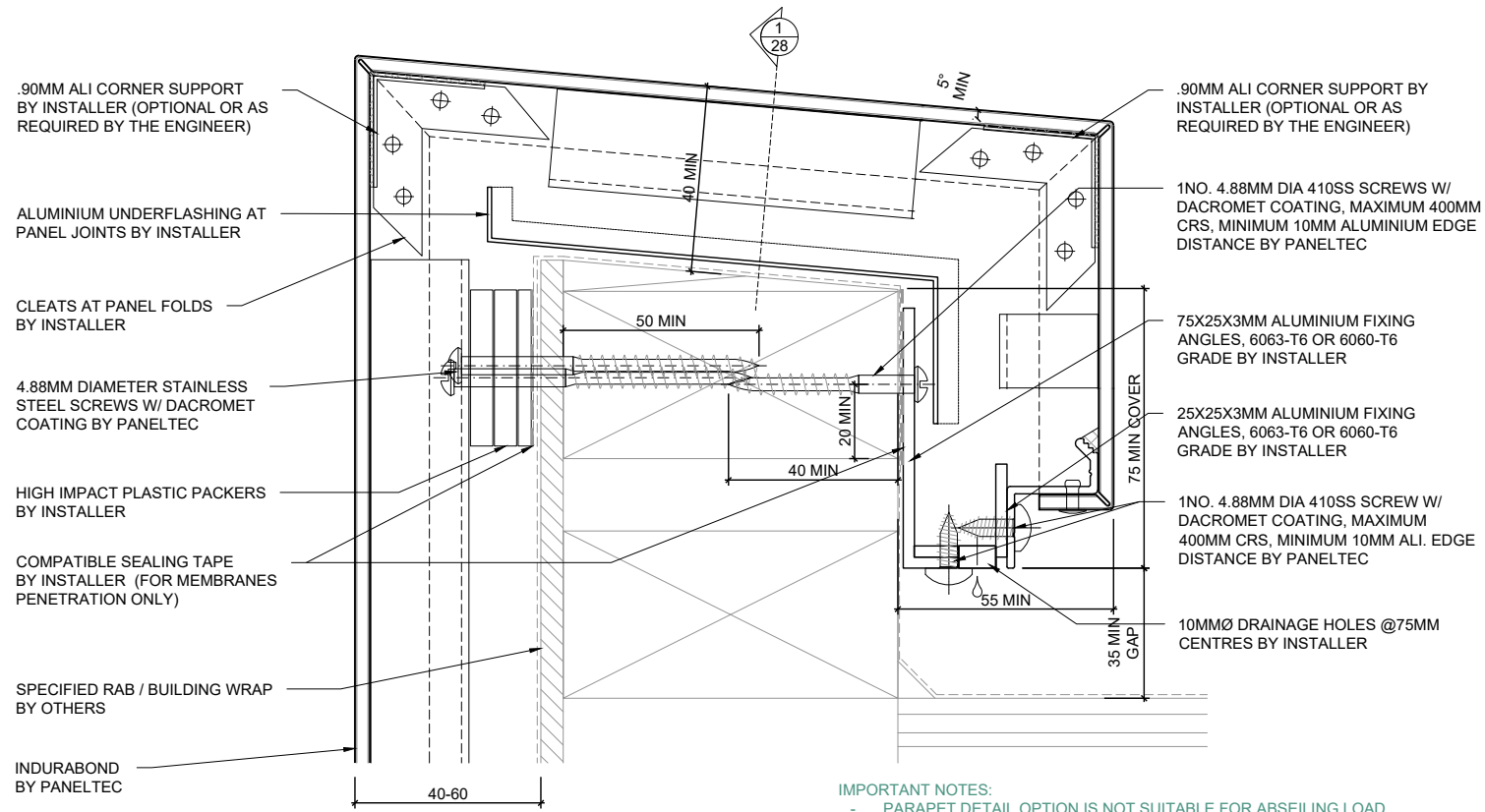


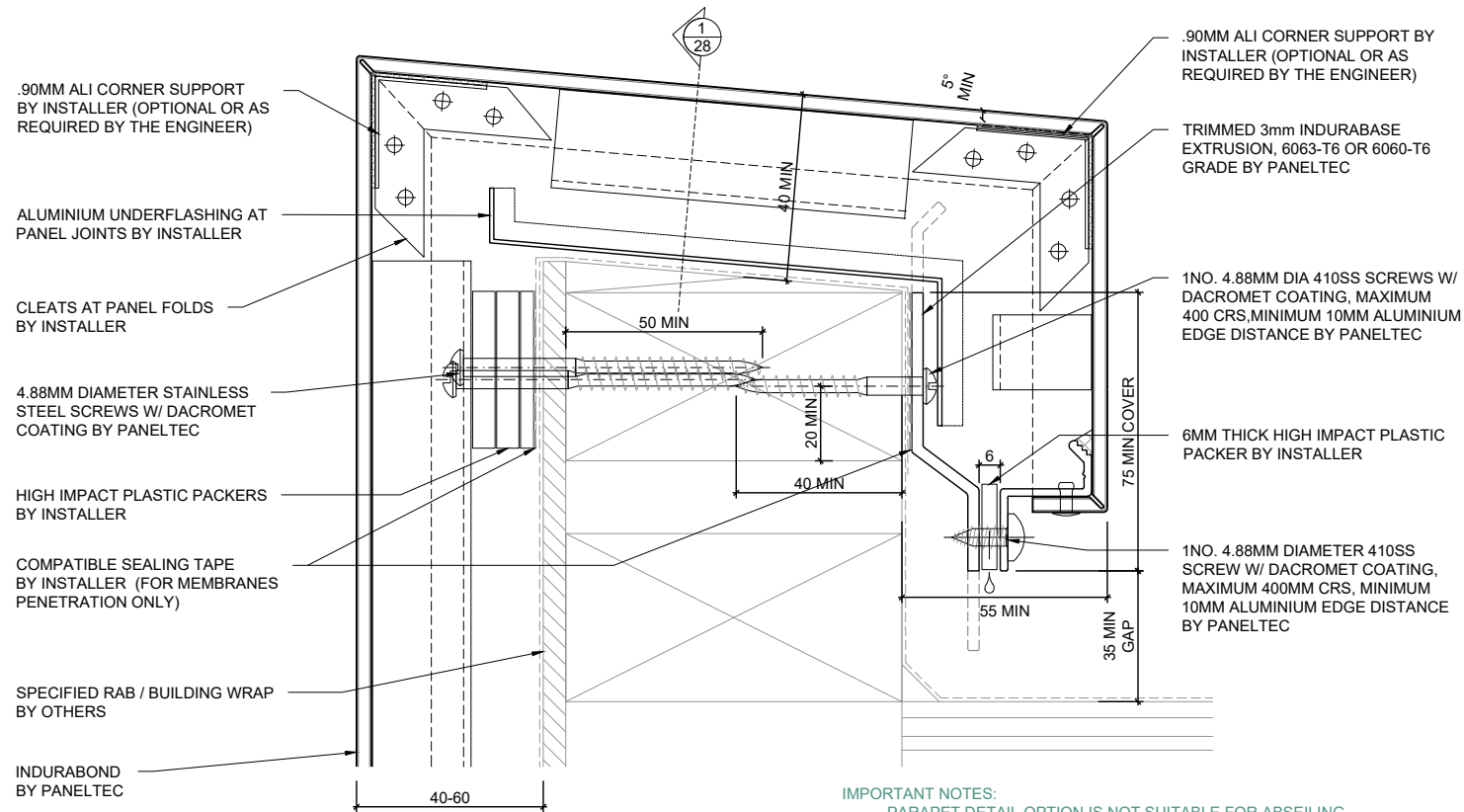






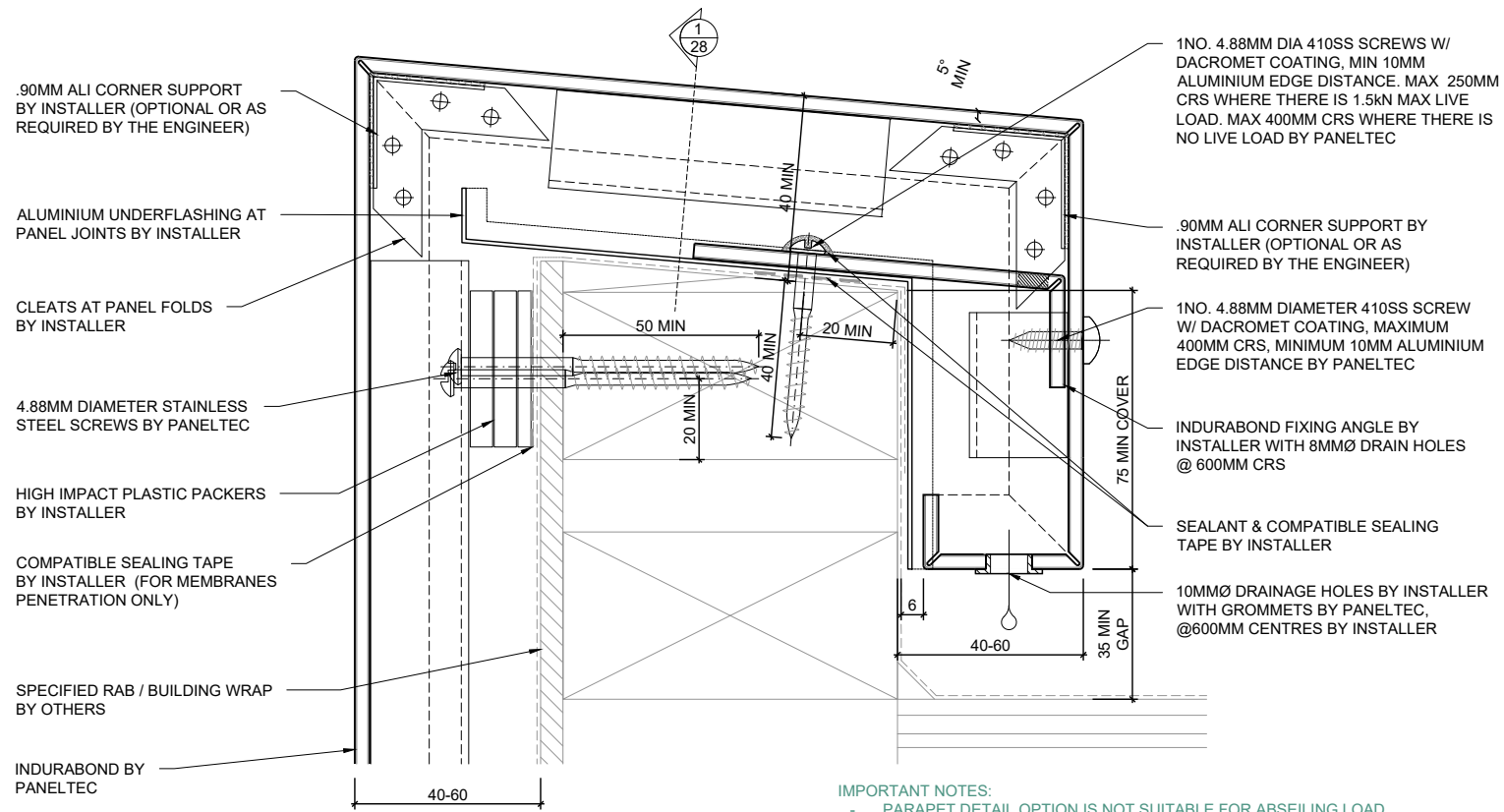


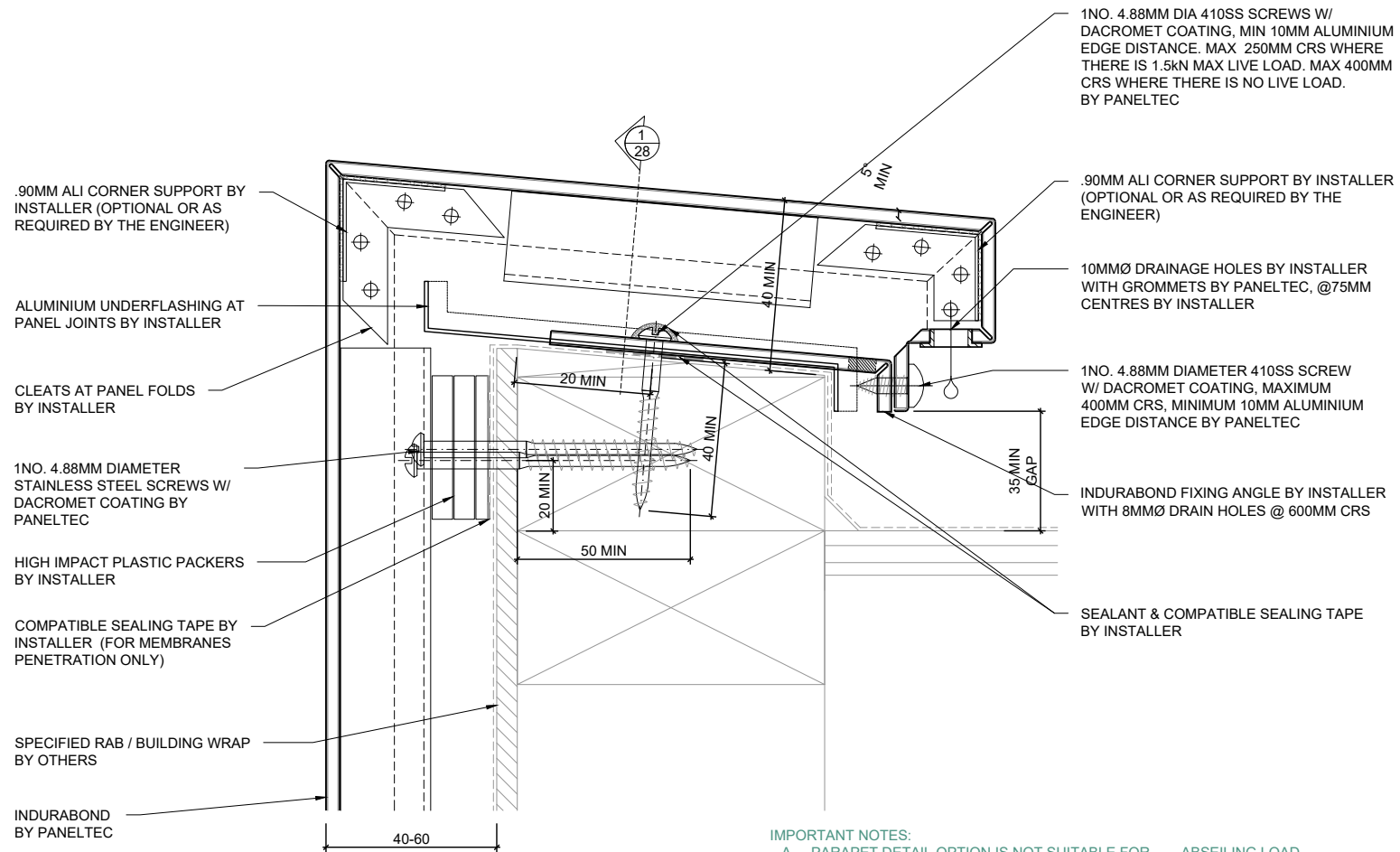




IMPORTANT NOTES:

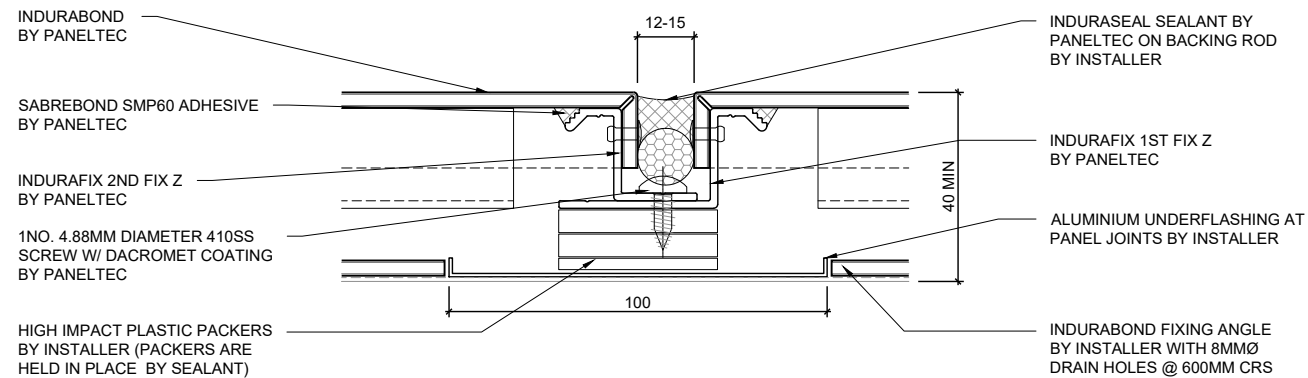
- PARAPET DETAIL OPTION IS NOT SUITABLE FOR ABSEILING
- PARAPET DETAIL OPTION IS APPLICABLE ONLY WHERE THERE IS NO LIVE LOAD.

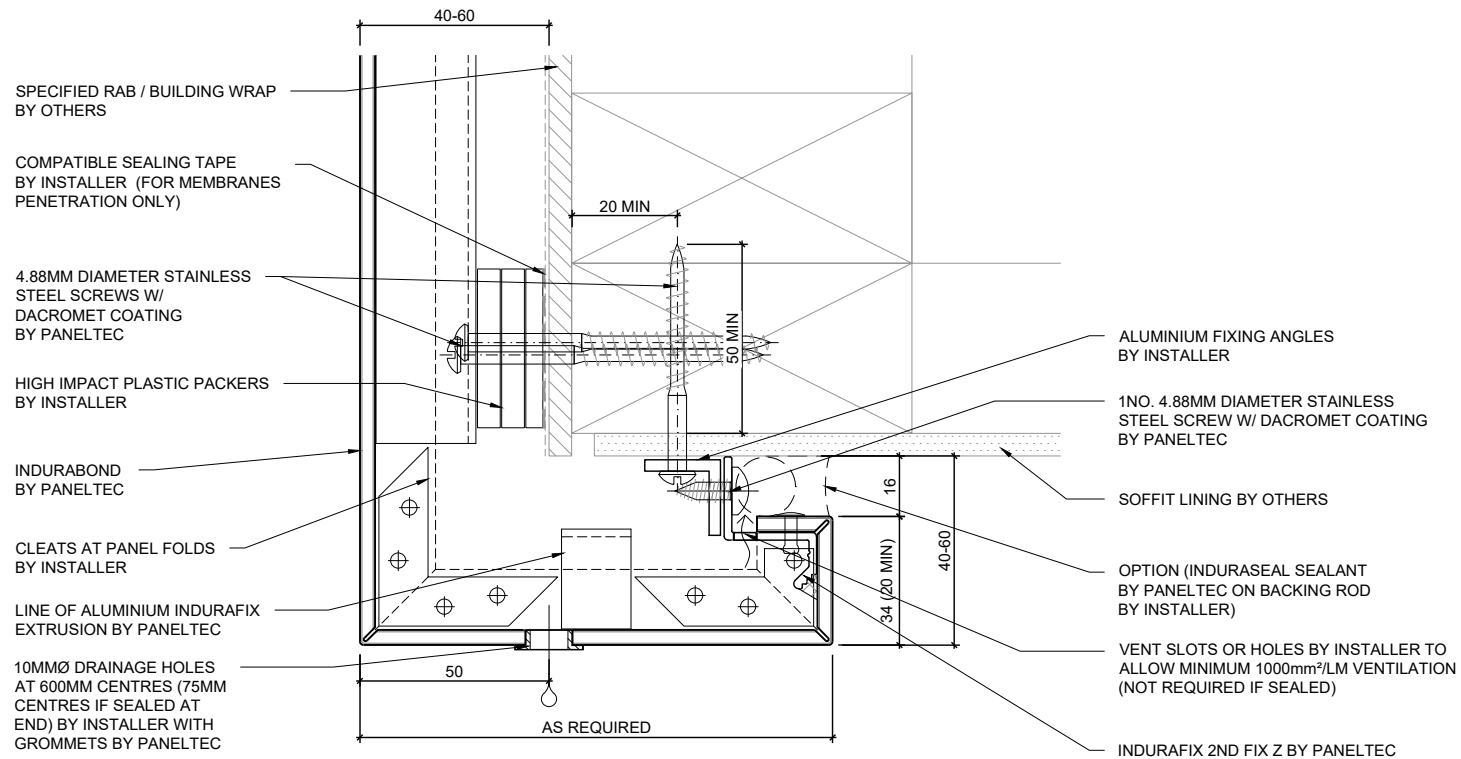




IMPORTANT NOTES:

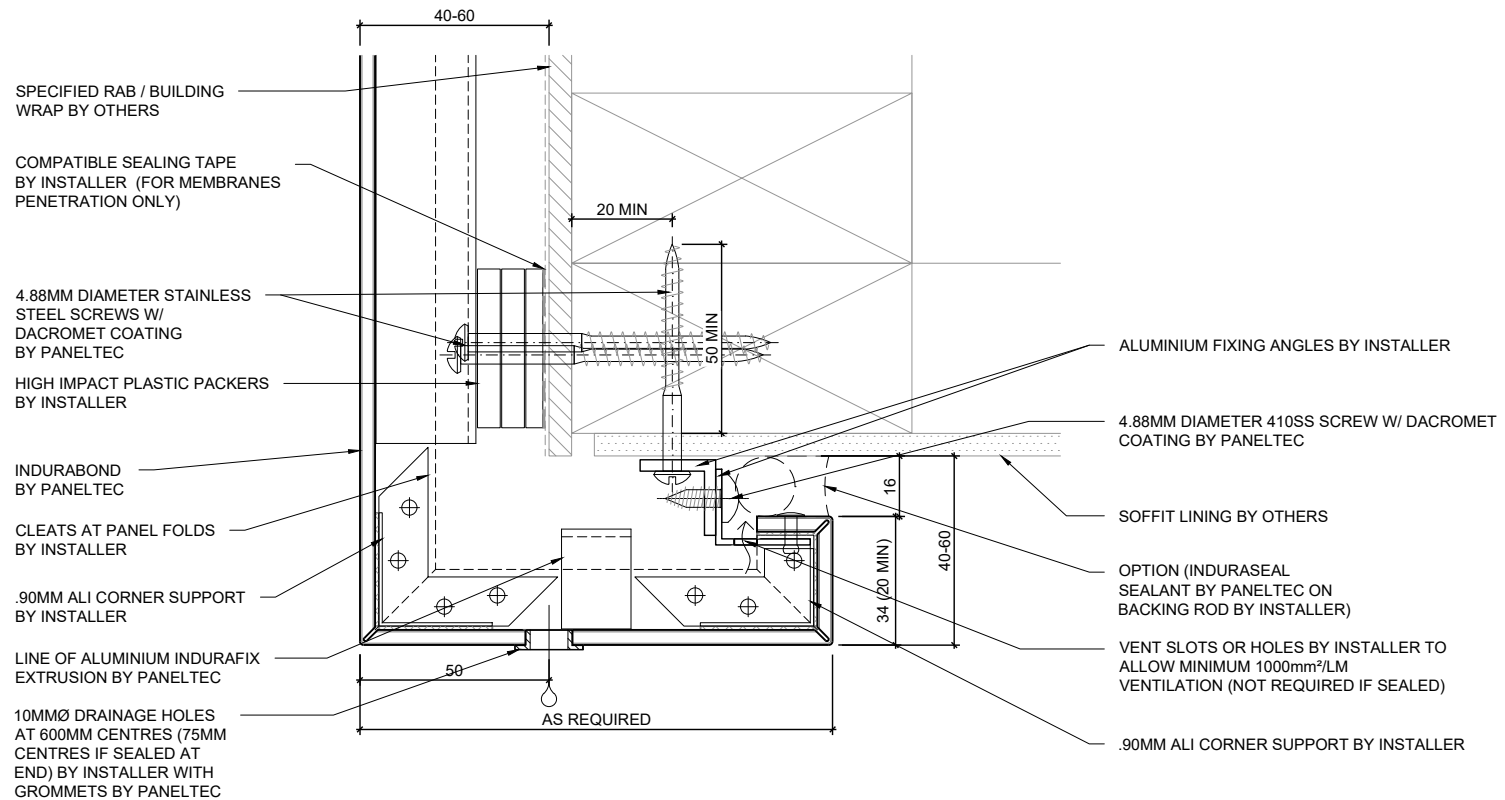
- PARAPET DETAIL OPTION IS NOT SUITABLE FOR ABSEILING LOAD.
- FOR LOW ROOF UPSTAND ONLY.
- THIS DETAIL DOES NOT COMPLY WITH THE BUILDING CODE REQUIREMENTS BUT MAY BE CONSIDERED AN ACCEPTABLE ALTERNATIVE SOLUTION.
- IT IS THE RESPONSIBILITY OF THE BUILDER OR ARCHITECT TO ENSURE THAT THIS DETAIL IS SATISFACTORY. SPECIFIC INSTRUCTIONS ARE REQUIRED FOR ITS IMPLEMENTATION.





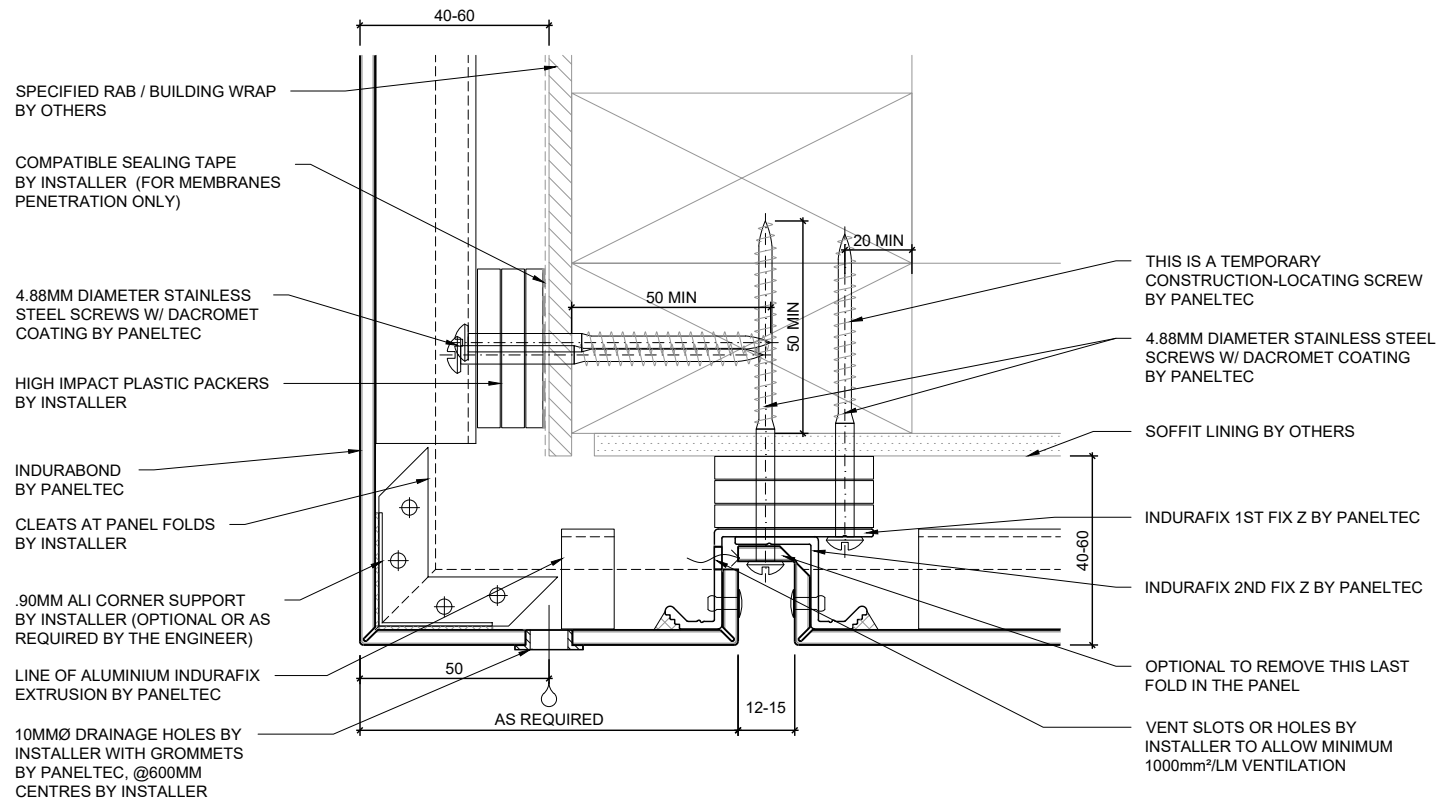
IMPORTANT NOTES:

- RECOMMENDED TO HAVE THE PANEL BOTTOM SLOPING @1.5° TOWARDS THE SIDE WHERE THE DRAIN HOLE IS LOCATED TO AVOID RISK OF PONDING.



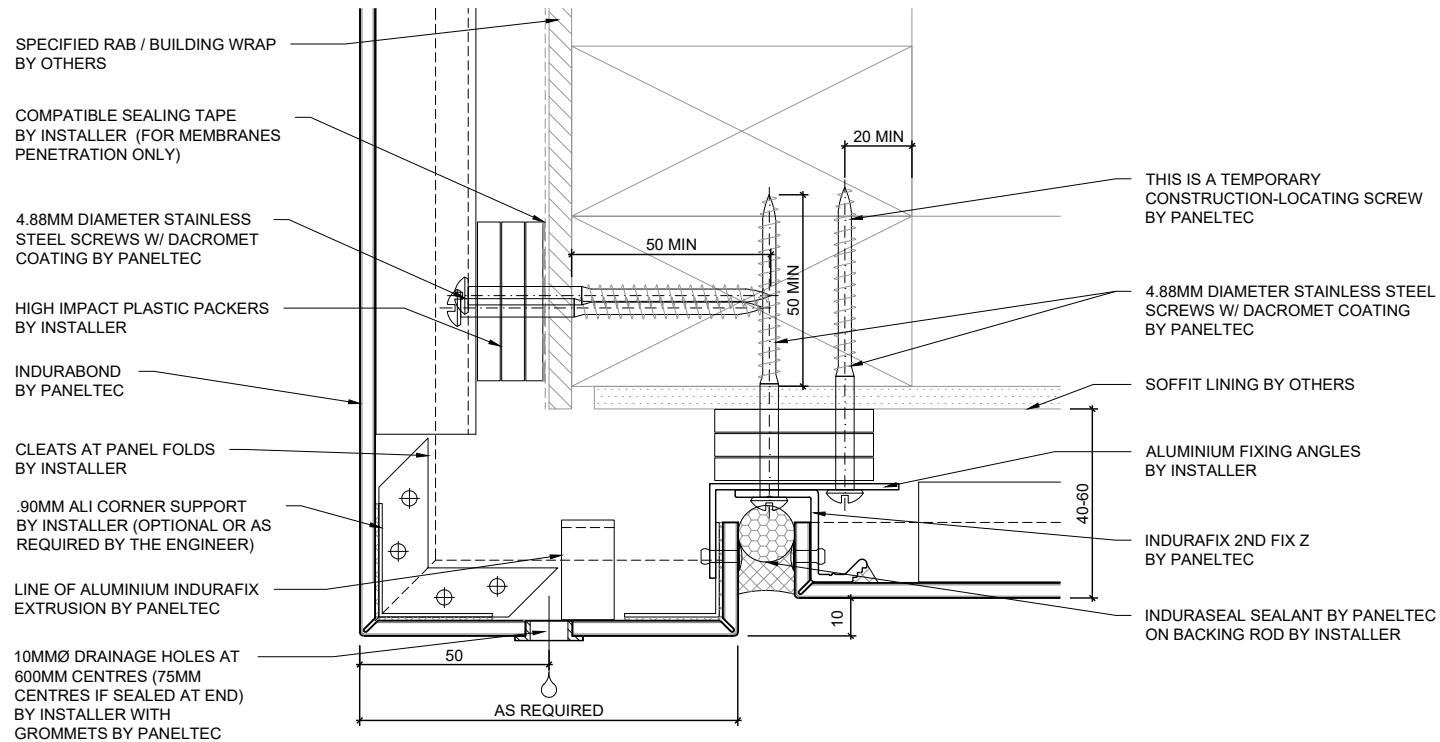
IMPORTANT NOTES:

- RECOMMENDED TO HAVE THE PANEL BOTTOM SLOPING @1.5° TOWARDS THE SIDE WHERE THE DRAIN HOLE IS LOCATED TO AVOID RISK OF PONDING.



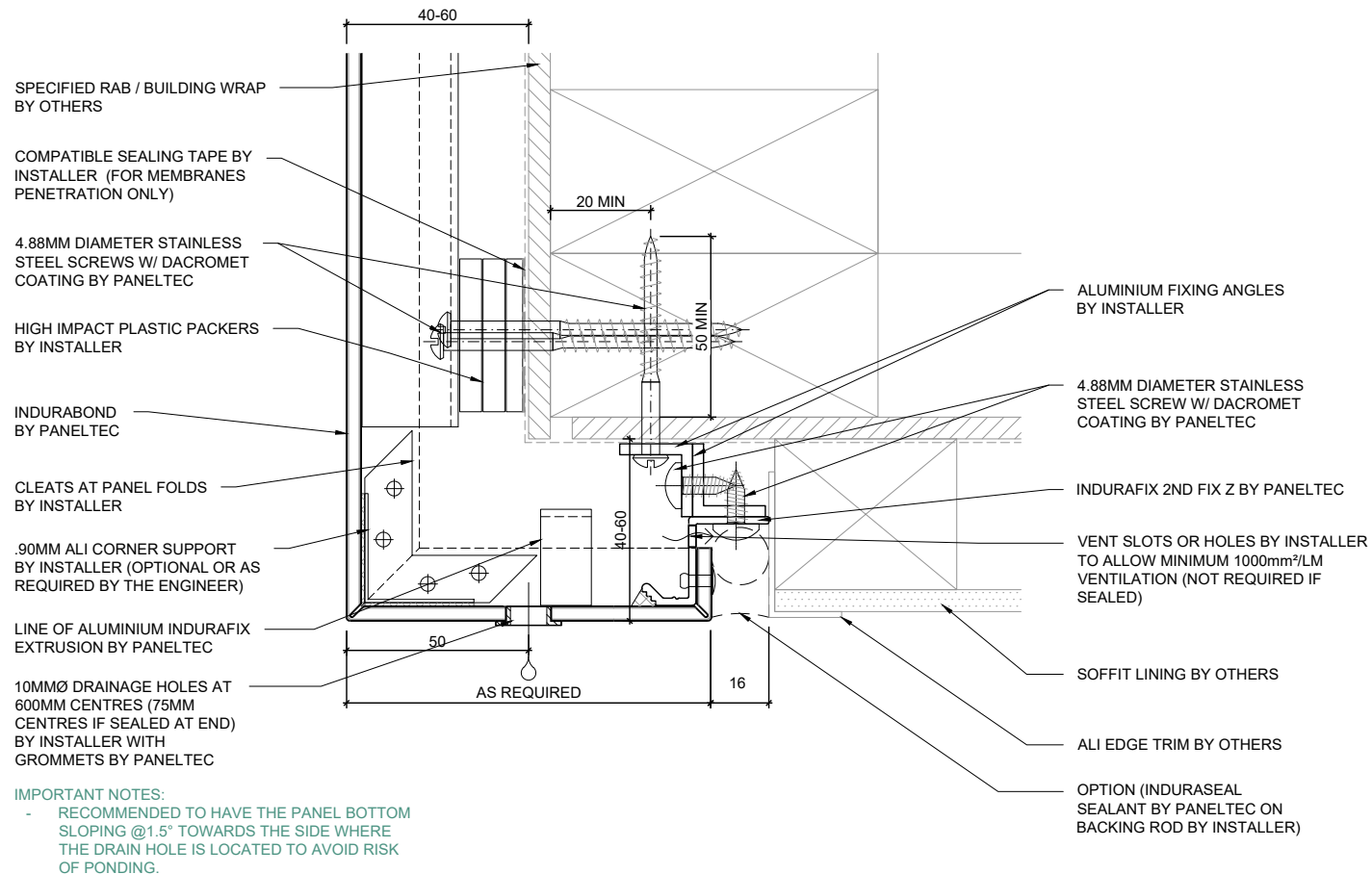
IMPORTANT NOTES:

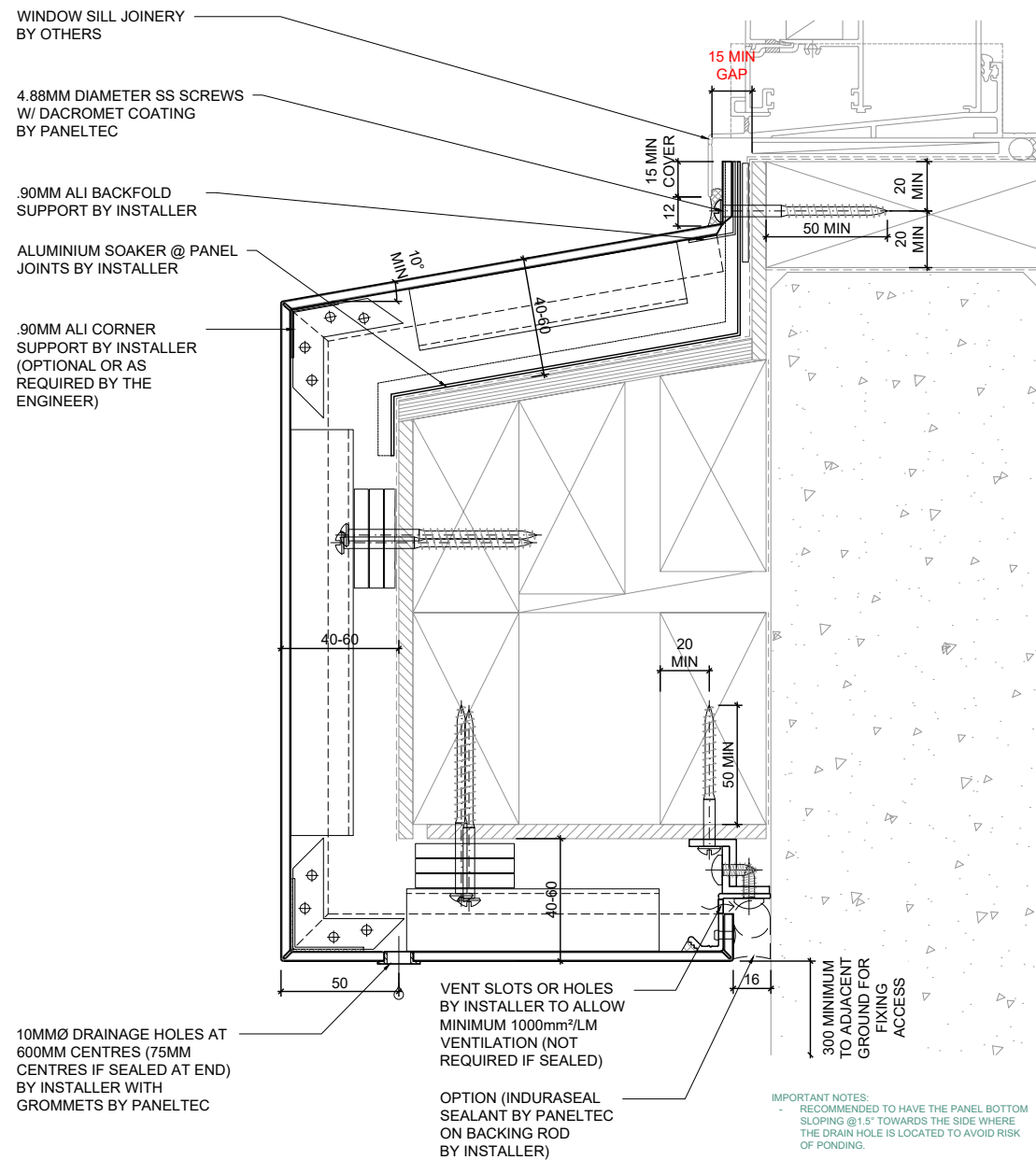
- RECOMMENDED TO HAVE THE PANEL BOTTOM SLOPING @1.5° TOWARDS THE SIDE WHERE THE DRAIN HOLE IS LOCATED TO AVOID RISK OF PONDING.

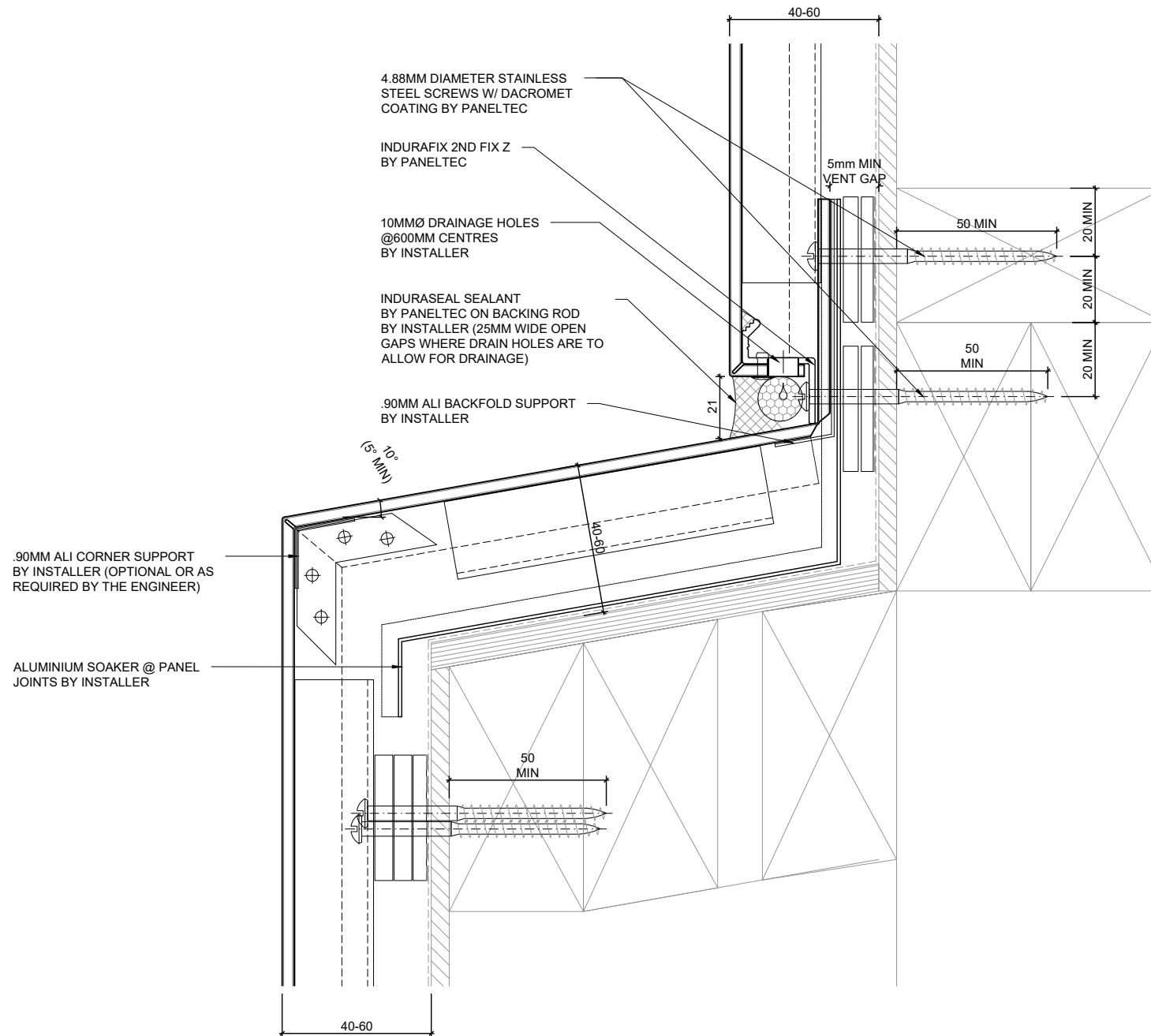


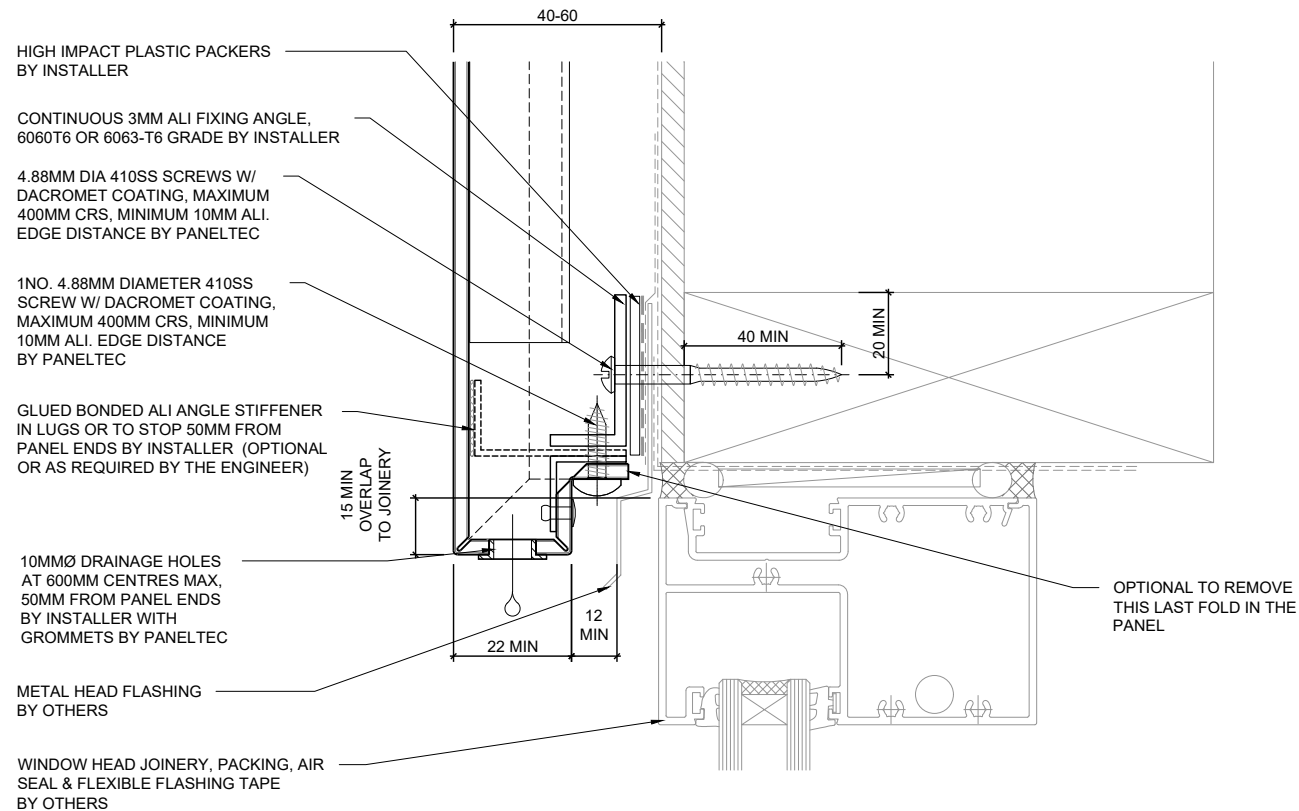
IMPORTANT NOTES:

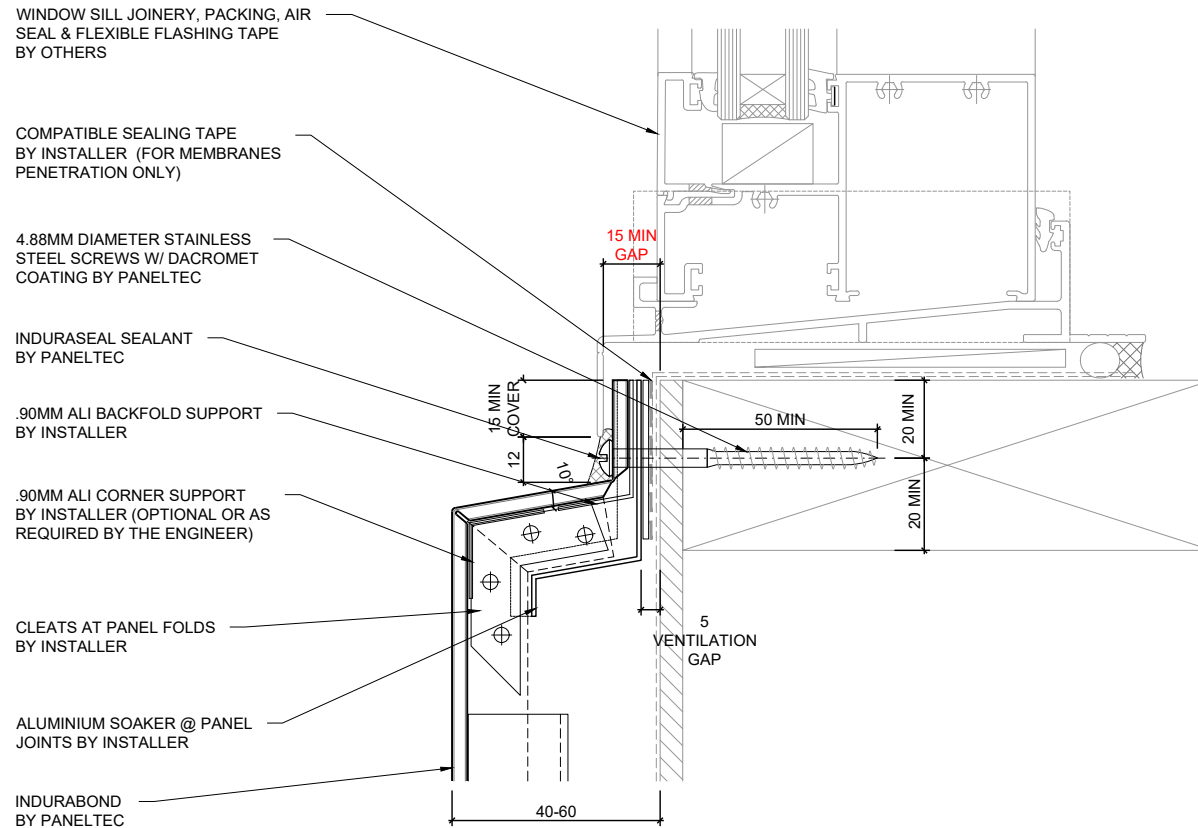
- RECOMMENDED TO HAVE THE PANEL BOTTOM SLOPING @1.5° TOWARDS THE SIDE WHERE THE DRAIN HOLE IS LOCATED TO AVOID RISK OF PONDING.

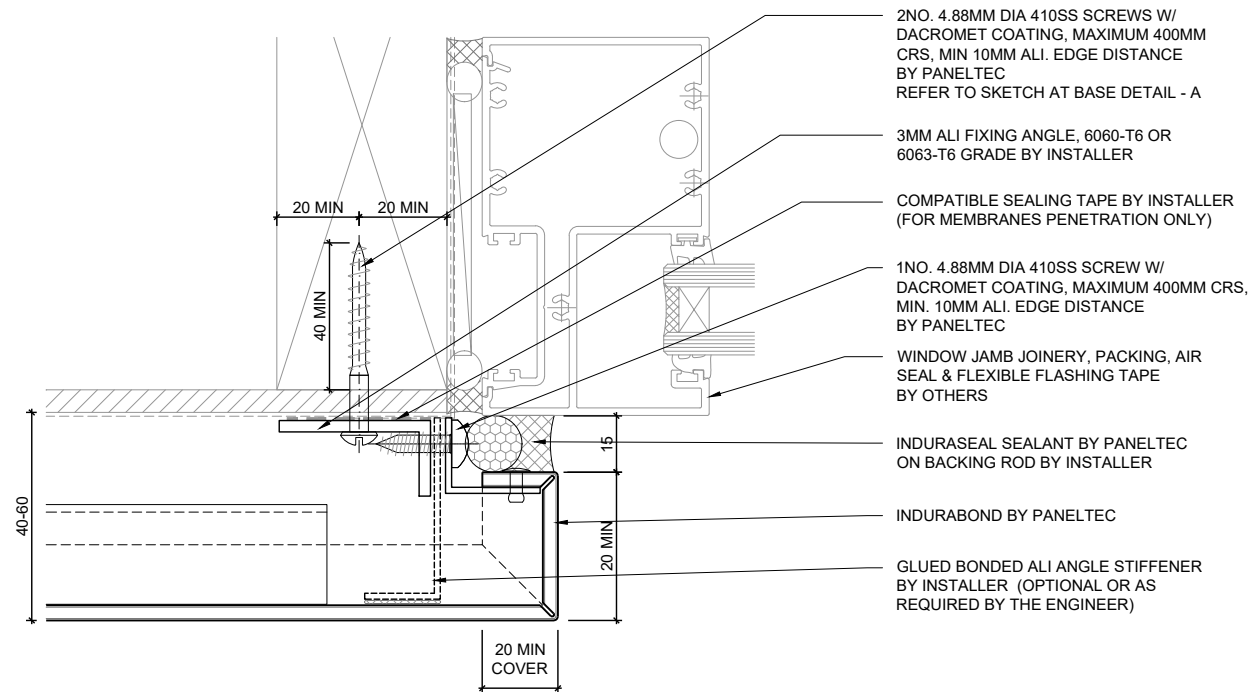


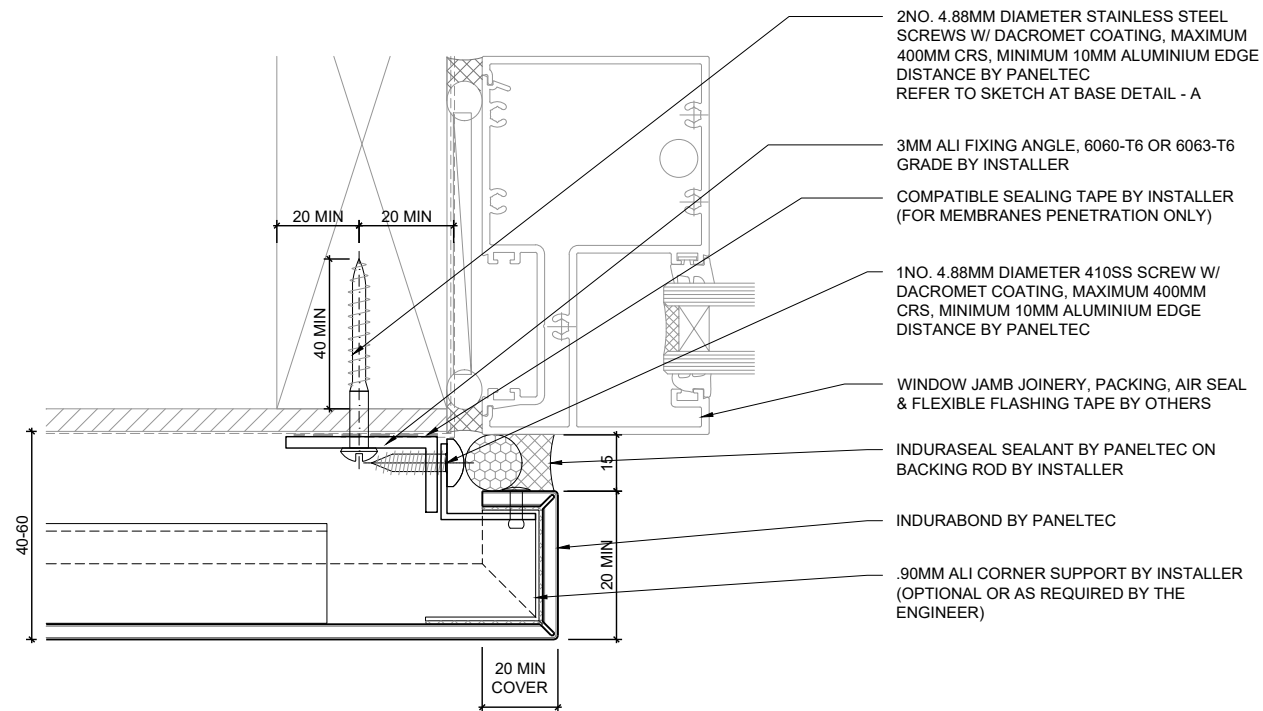


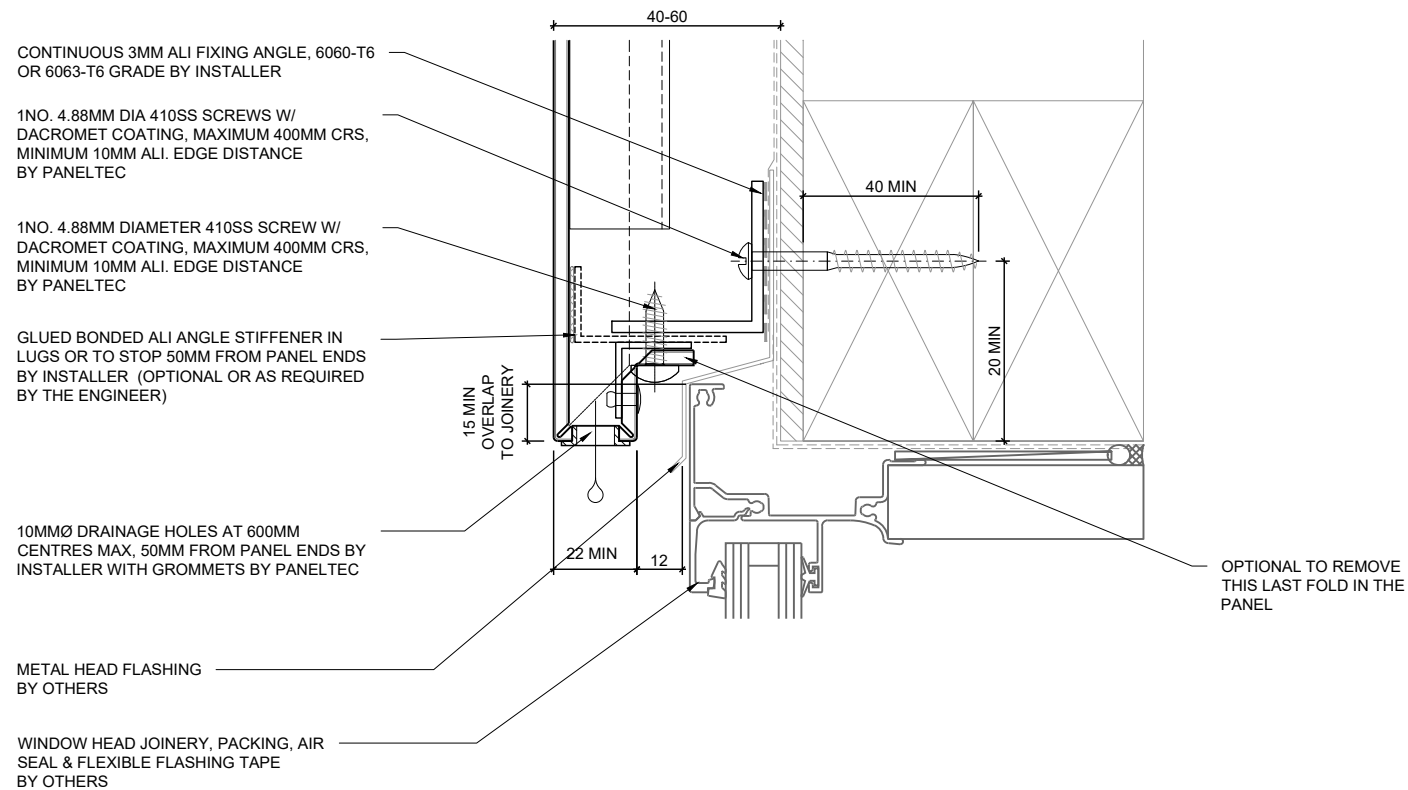


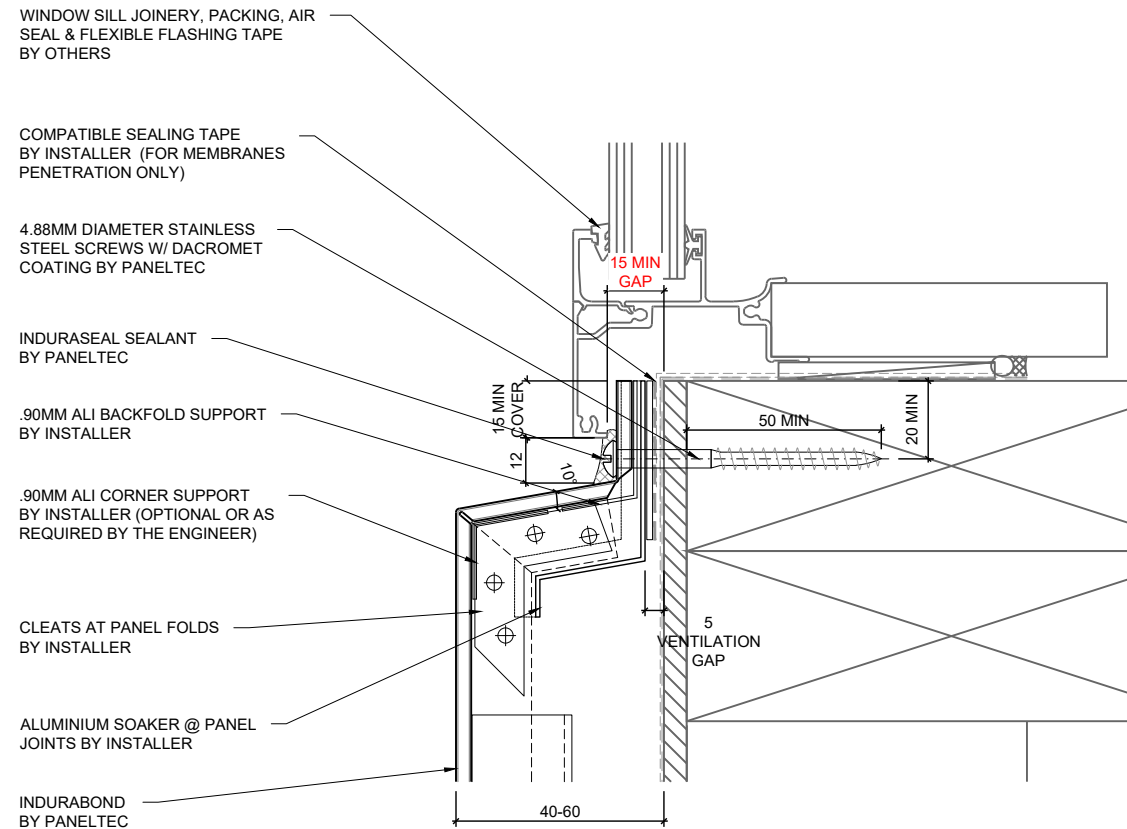


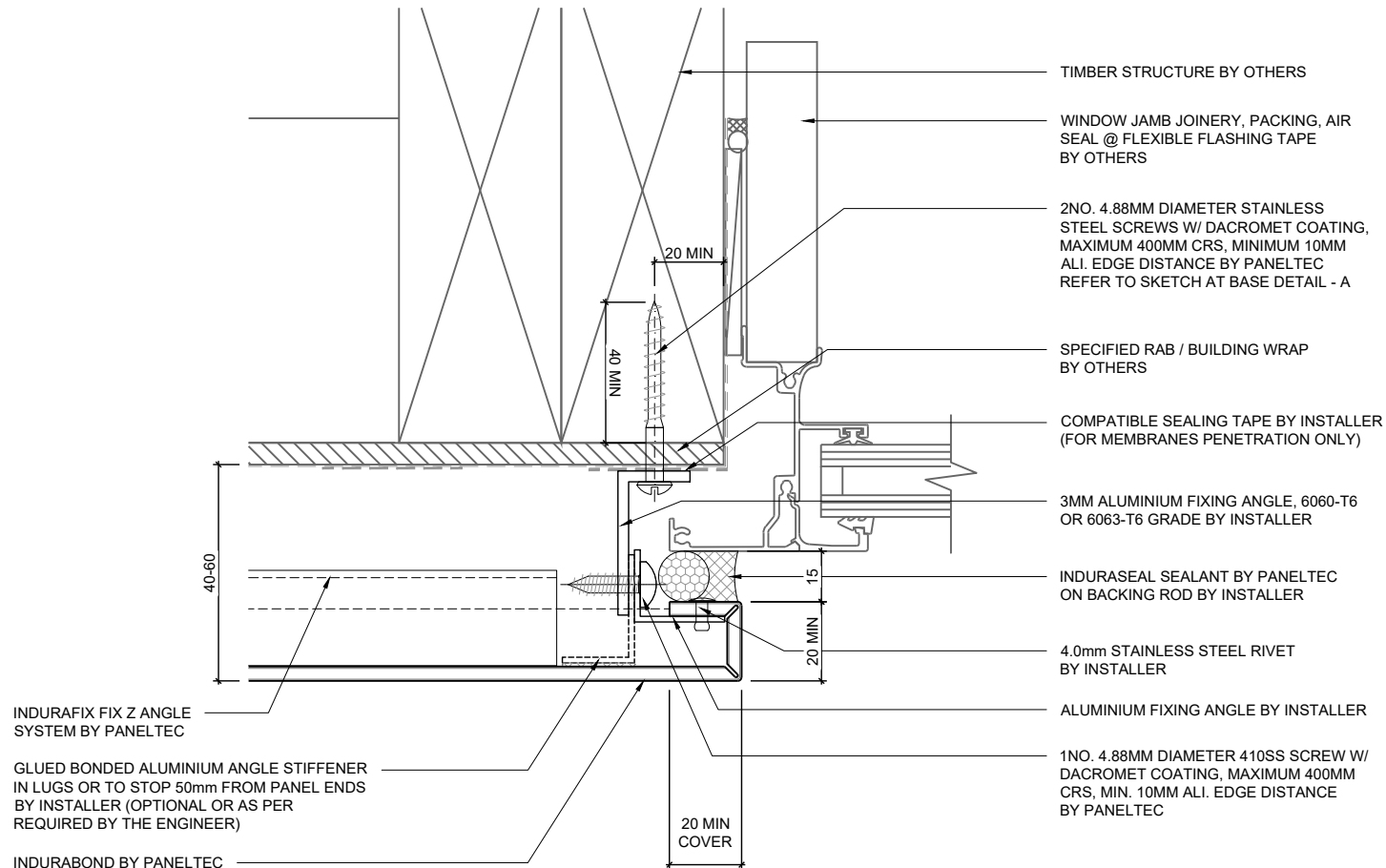


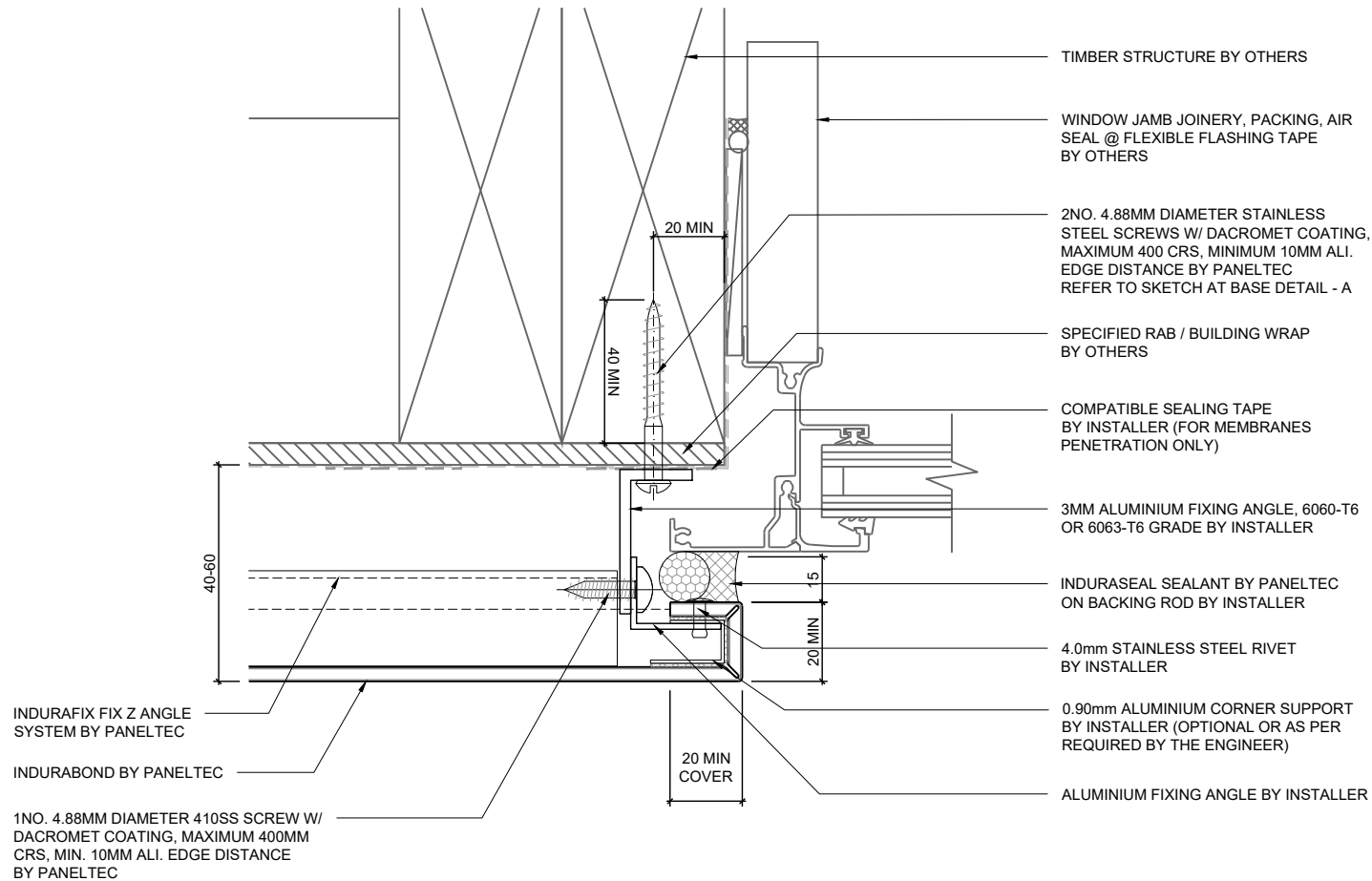


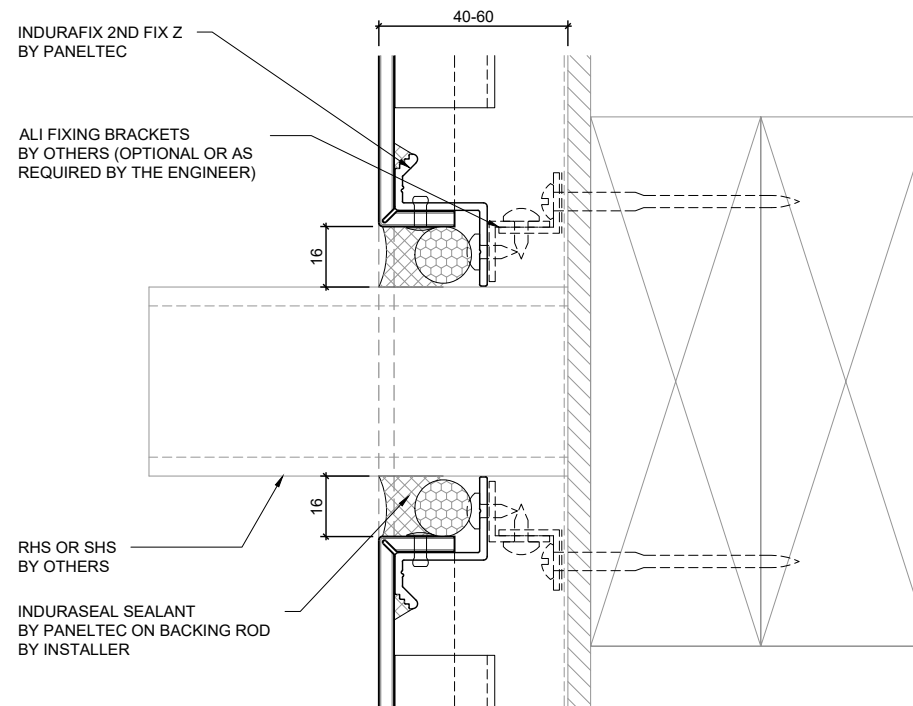


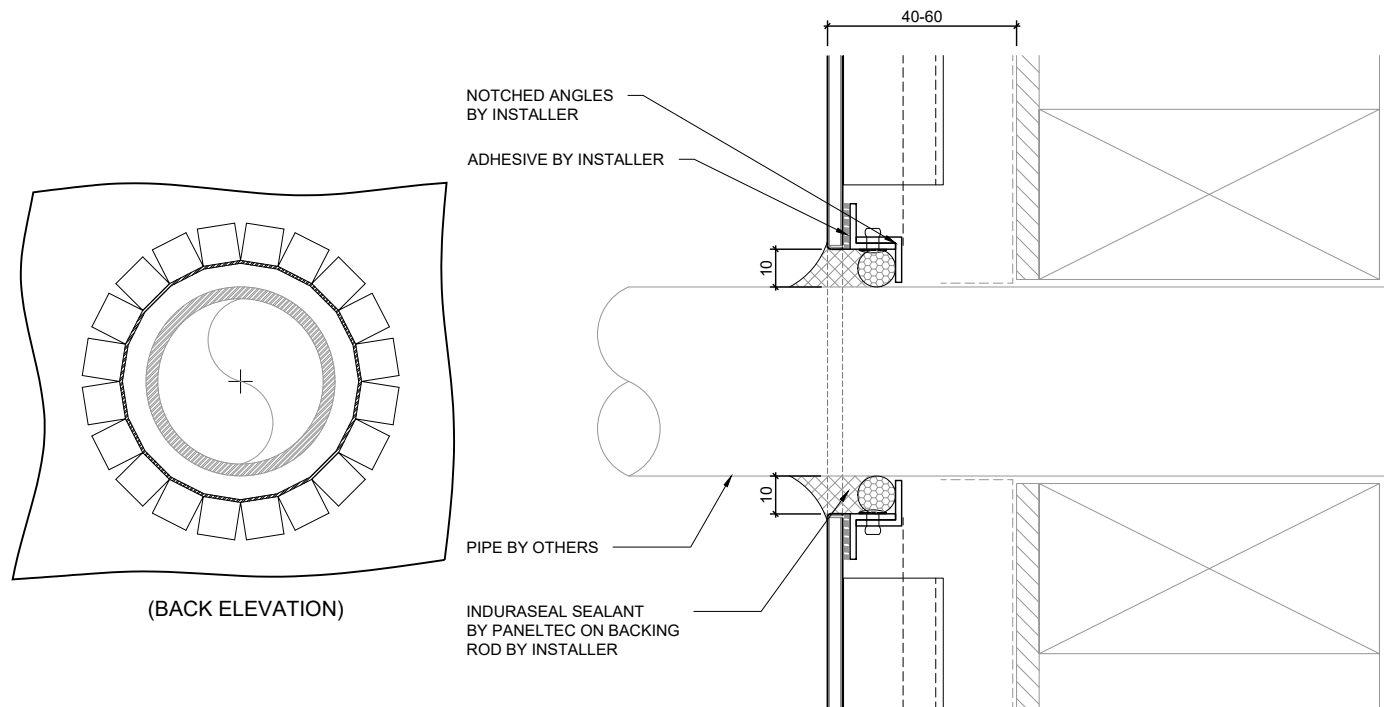


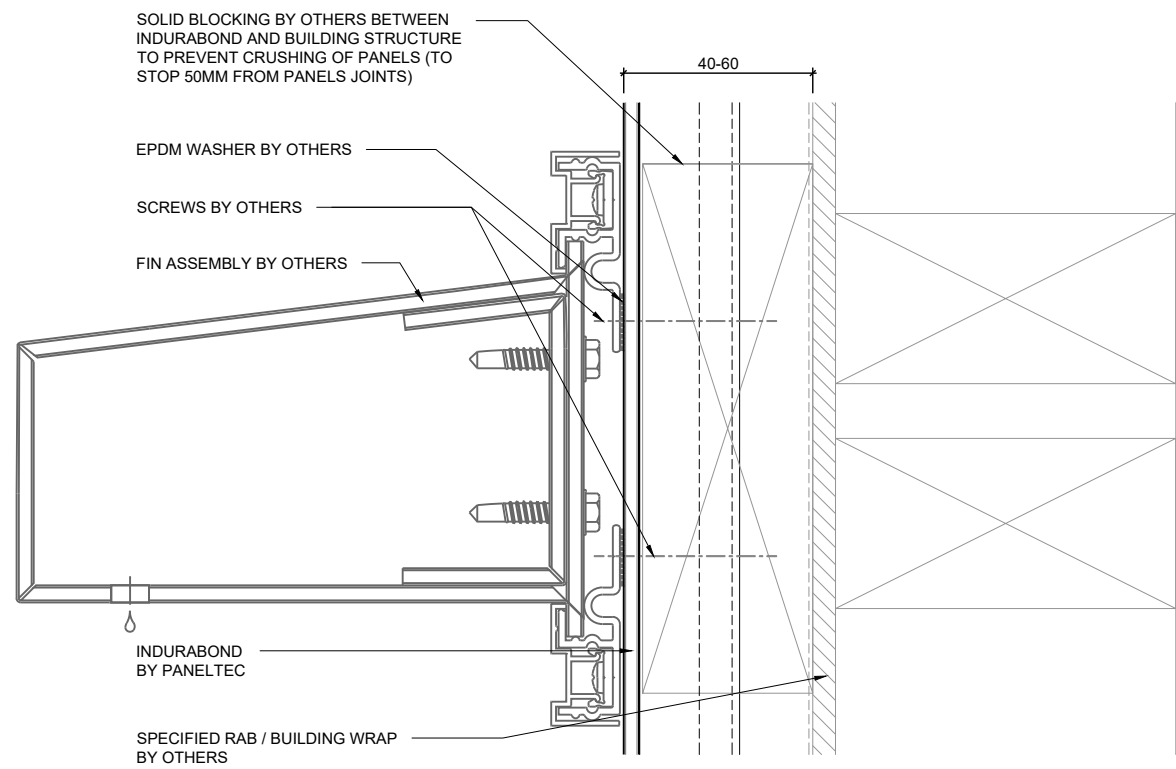


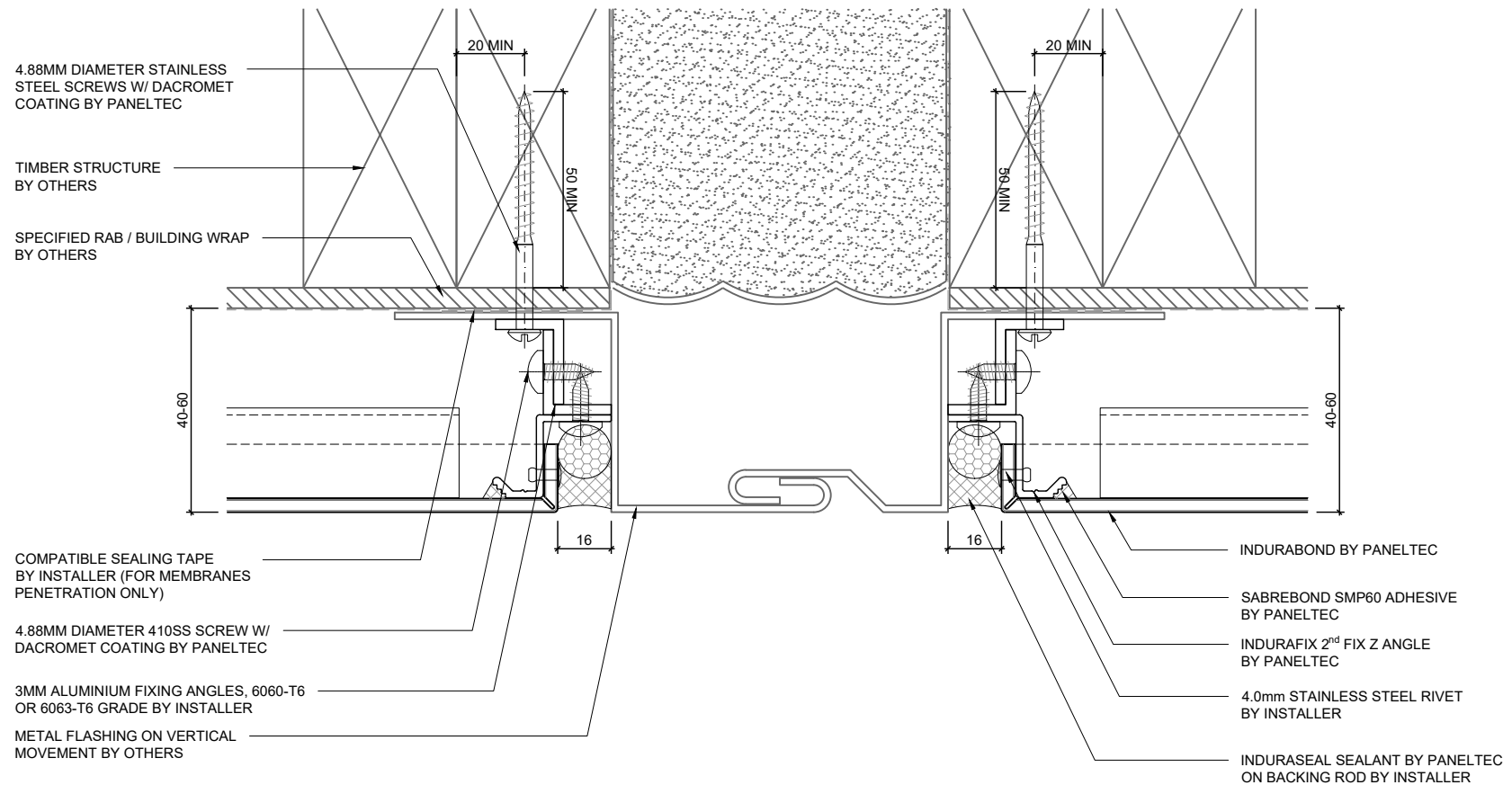


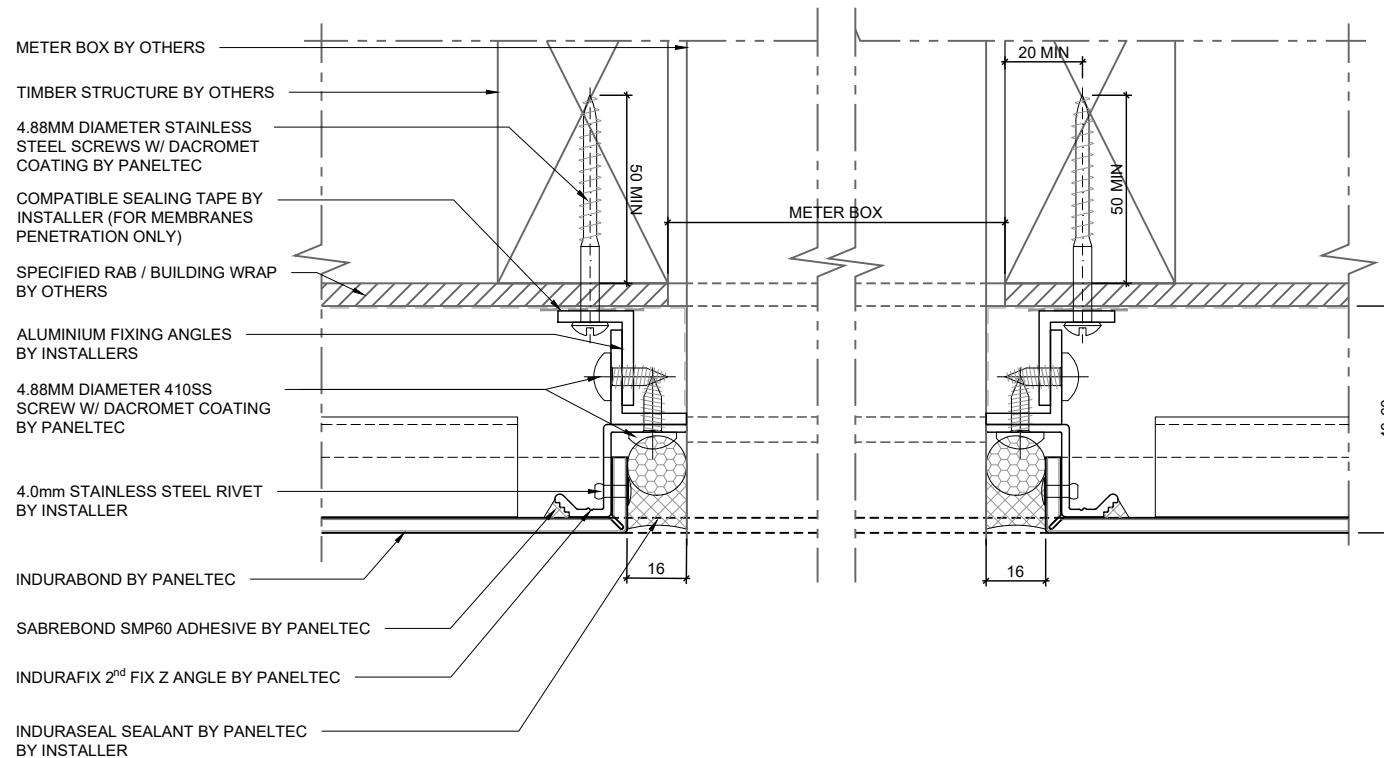


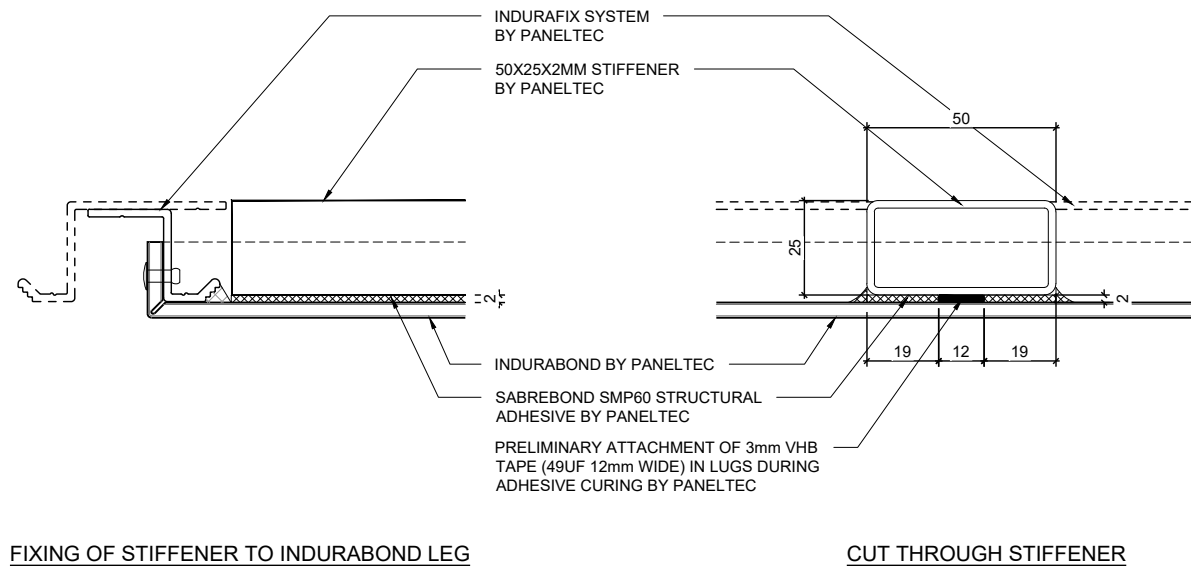














Auckland Office
5 Piermark Drive
Rosedale
Auckland 0632
0508 726 358

Head Office
10 Mako Street,
Dargaville
09 439 4357

info@paneltec.co.nz
www.paneltec.co.nz

