



Interlocking • Aluminium • Façade

NEW ZEALAND

# INSTALLATION GUIDE SEAM VERTICAL

[WWW.PANELTEC.CO.NZ](http://WWW.PANELTEC.CO.NZ)



## 10. SEAM VERTICAL

### 10.1 INSTALLATION GUIDE

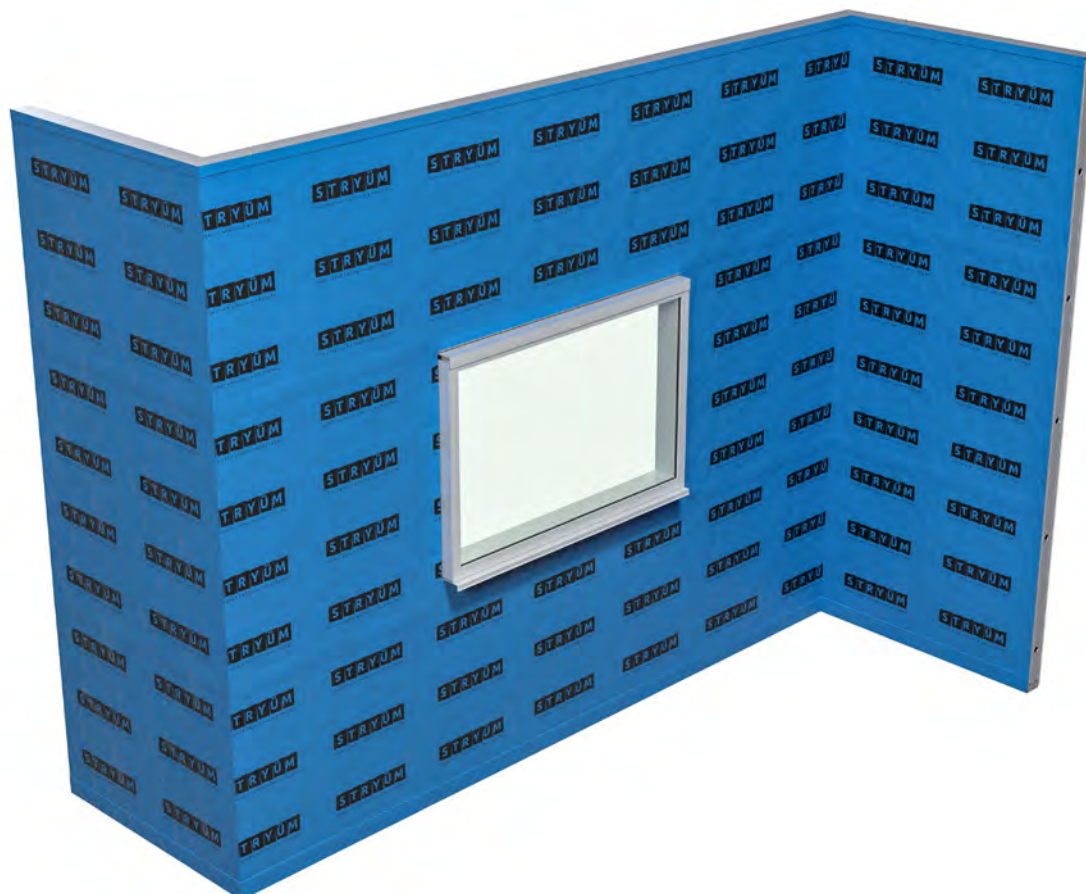
---



# SEAM VERTICAL – INSTALLATION GUIDE

Please ensure you review the complete Stryüm Seam details to ensure you order all the required trims, the following step by step is a guide only.

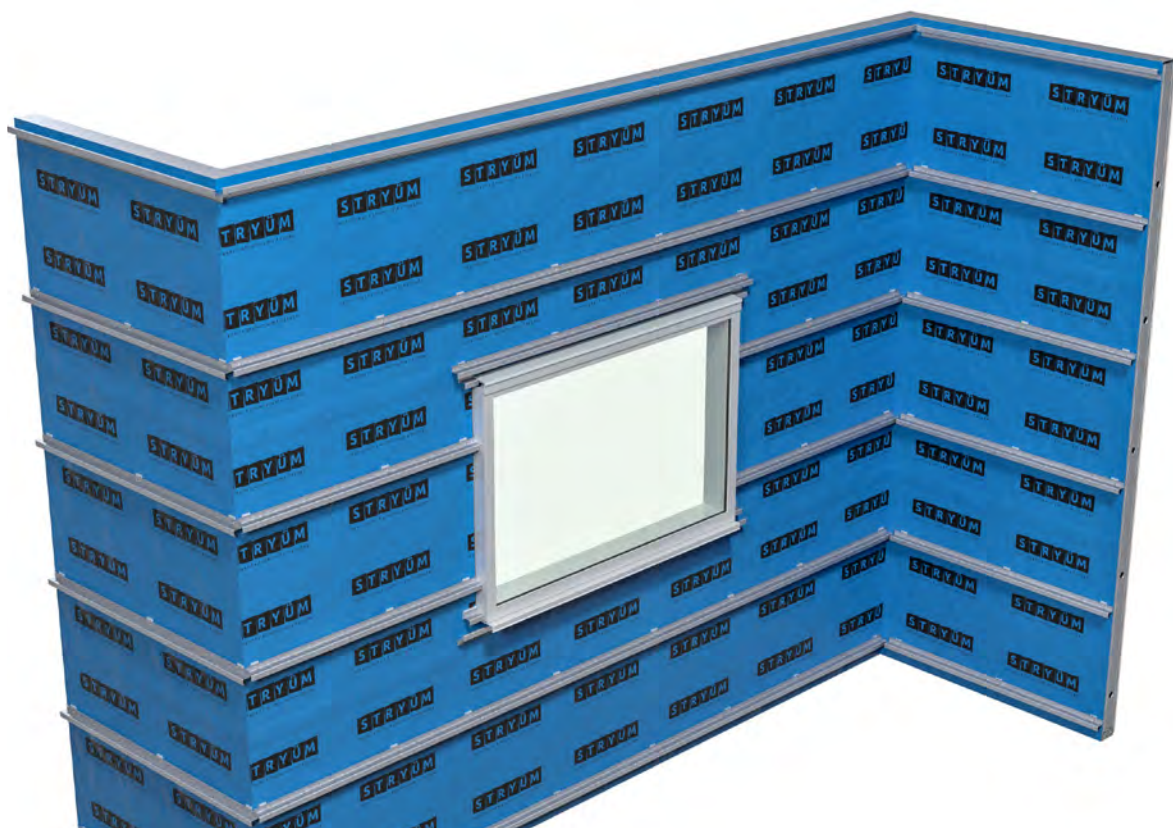
## STEP 1 – WEATHERTIGHT MEMBRANE



As Stryüm is a rainscreen façade, a weathertight, flexible membrane or rigid underlay must be installed over the supporting wall. It must meet the project specific requirements for weathertightness and be installed as per manufacturers guidelines. All junctions, penetrations and openings associated with the underlay must be sealed.

Items On This Page			
Code	Description	Length	Supplied by Paneltec
N/A	Solitex Extasana (flexible wrap), Solitex Extasana Adhero (ridge barrier) or an equivalent product that complies with Table 23 of E2/AS1.	N/A	

## STEP 2 – SUBSTRATE



Packers for a plumb substrate and ventilation need to be installed as required prior to the installation of the Stryüm S Section.

Install Stryüm S Section substrate horizontally. The substrate needs to be level to ensure the cladding is flat once installed. Any imperfections in this substrate will be highlighted once the panels are installed.

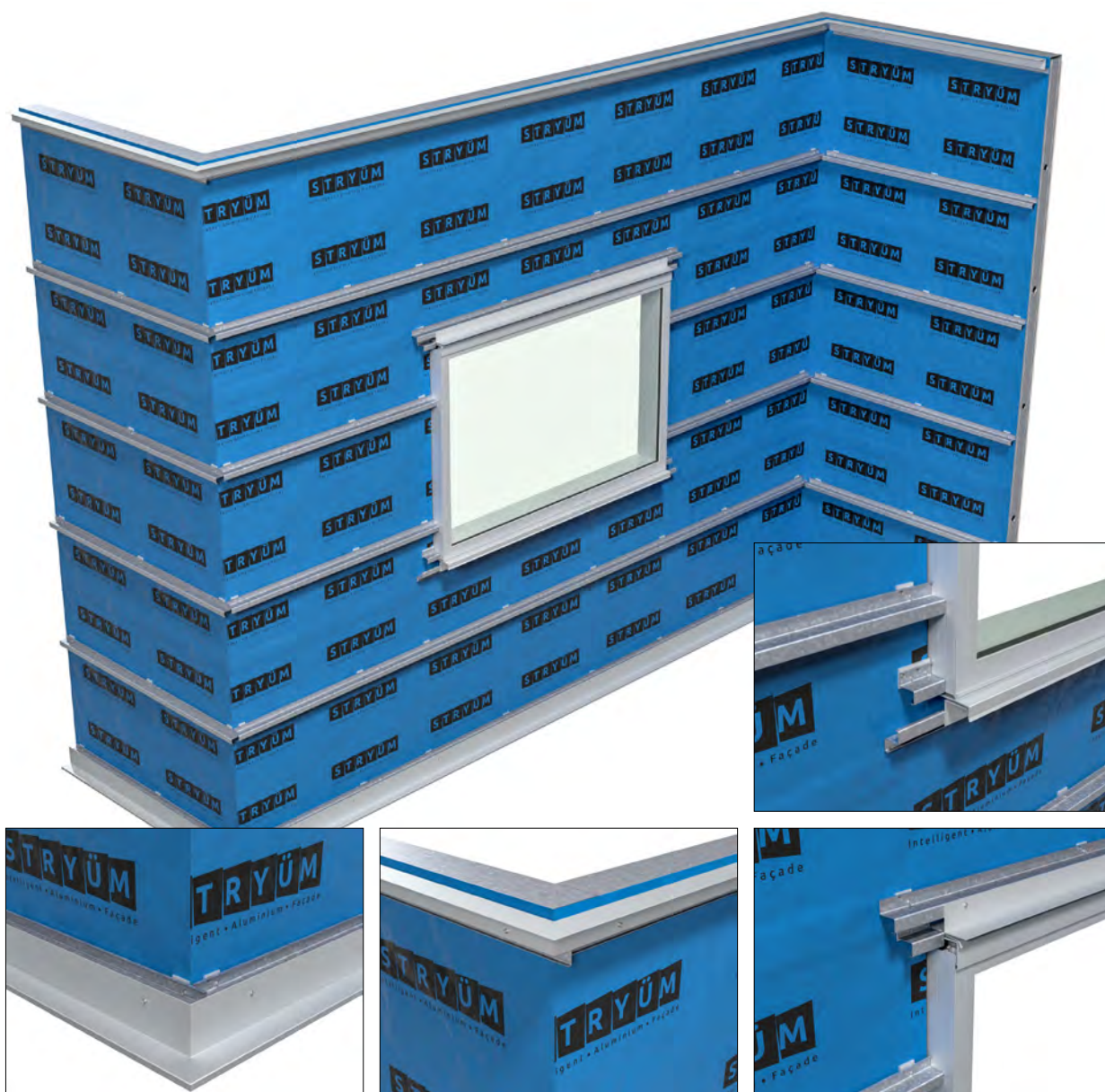
Stryüm S Sections are installed at maximum 600mm centres. Project specific requirements may dictate shorter span lengths.

### Items On This Page

Code	Description	Length	Supplied by Paneltec
TRM0901	35mm Stryüm S Section	6.5m	✓



## STEP 3 – HORIZONTAL TRIMS

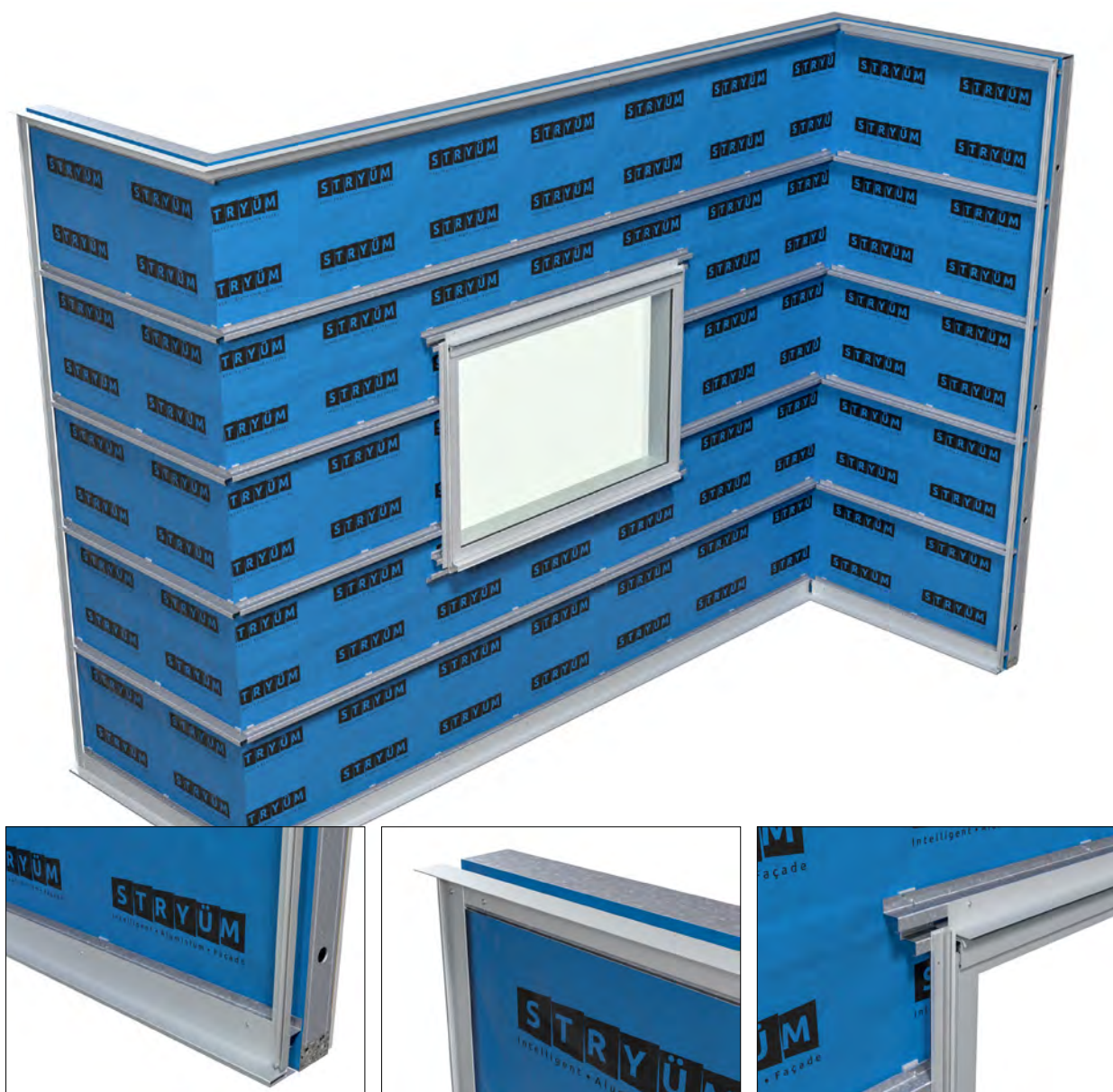


Install the horizontal trims for the cladding, at the top and bottom of the cladding section, above and below any wall penetrations, and at any slab junctions.

When installing down to an adjacent flat surface such as a garden bed or pathway, a minimum of 150mm from the ground is recommended to prevent rain splash back dirtying the façade.

Items On This Page			
Code	Description	Length	Supplied by Paneltec
TRM4201	Seam Foot Mould	7m	✓
TRM0506	50 x 50 x 1.6 L-Angle	7m	✓

## STEP 4 – VERTICAL TRIMS



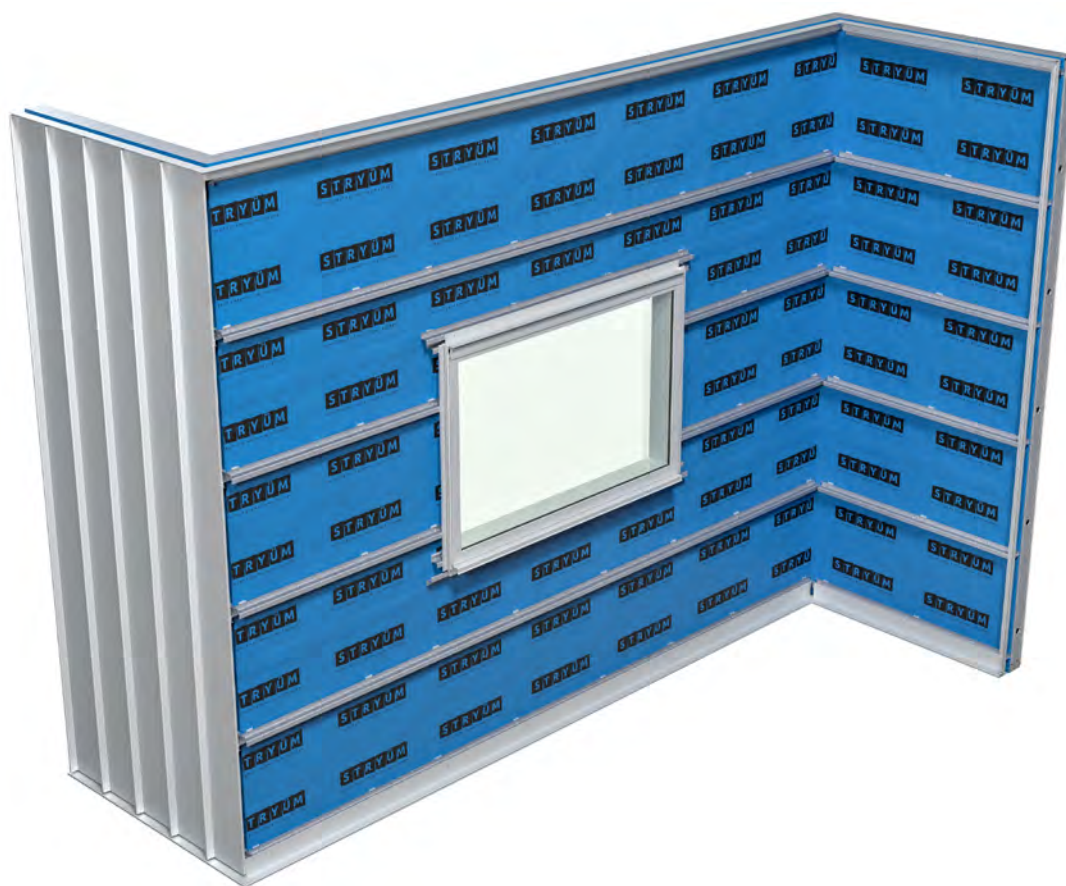
Install the vertical trims for the cladding, at the left and right of the cladding section, at either side of any wall penetrations, and at any corners.

Note: the cladding system is designed to be installed continuously around the building. Pick a cladding direction (Left-Right or Right-Left) and maintain this direction across the whole project. If the cladding is being completed in sections, it is important the trims for either side of a cladding zone are installed prior to the cladding being installed to ensure a clean finish.

Items On This Page			
Code	Description	Length	Supplied by Paneltec
TRM4101	Seam Starter Strip	7m	✓
TRM0201b	Stop End (Female)	7m	✓



## STEP 5 – INSTALL CLADDING (TO EXTERNAL CORNER)

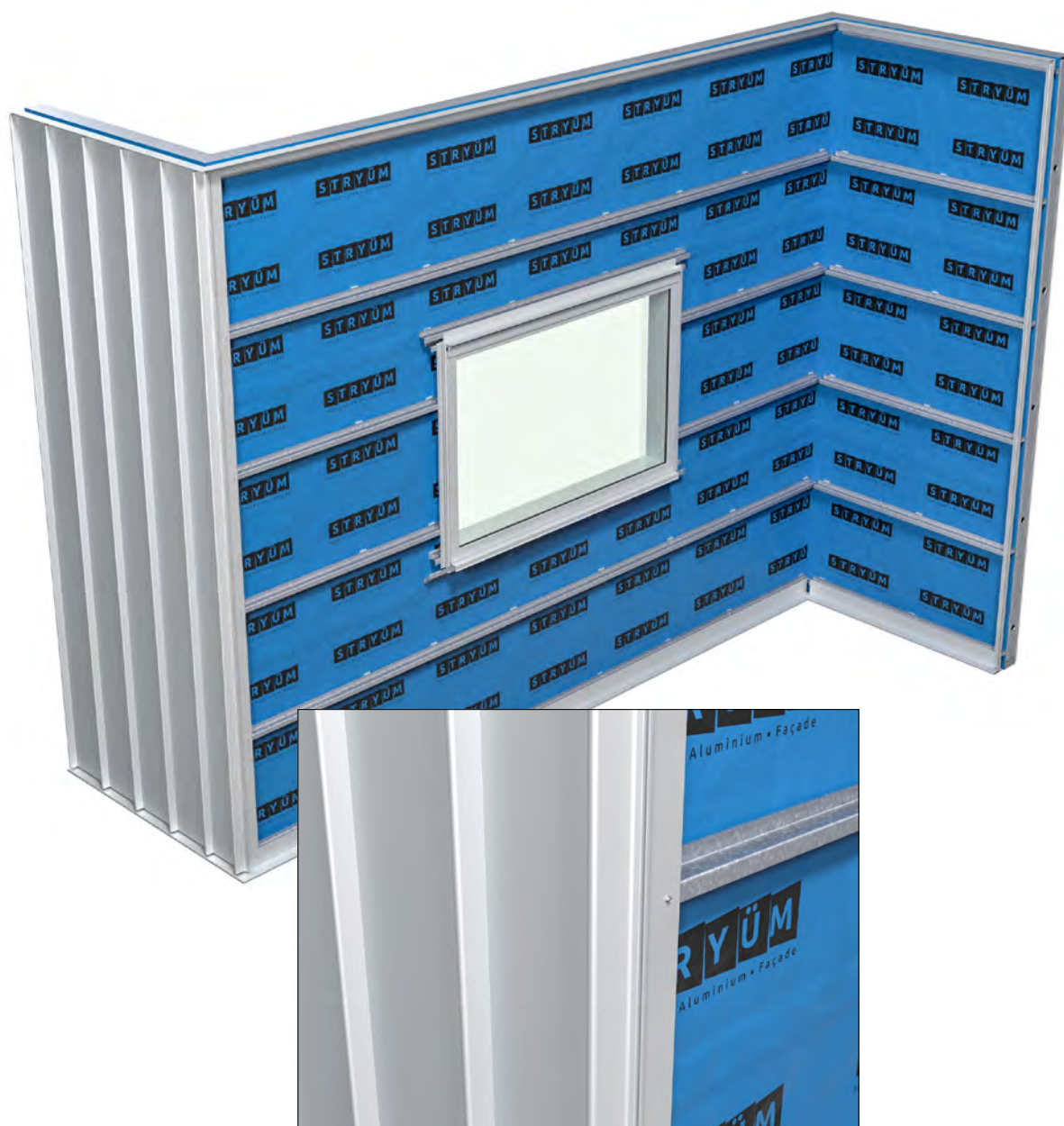


Install the cladding by cutting the panels to length, hooking the panel into the previous panel, and affixing to the S Section. In this diagram the cladding direction chosen is Left-Right. Due to the rainscreen façade system Stryum utilizes, a minimum airflow gap of 10mm must be maintained at the top and bottom of the cavity.

When installing Seam around an external corner, install the cladding up to the corner, and trim the final panel down the length till it is flush with the substrate of the adjoining wall. Insert packers behind the cladding and fix through the face of the panels.

Items On This Page			
Code	Description	Length	Supplied by Paneltec
SE260	Seam	7m	✓

## STEP 6 – INSTALL EXTERNAL CORNER



Install the external corner, whilst making sure to cover the screws used to face fix the cladding on the adjoining wall.

Items On This Page			
Code	Description	Length	Supplied by Paneltec
TRM4401	Seam External Corner	7m	✓



## STEP 7 – INSTALL CLADDING (TO INTERNAL CORNER)



Install the cladding by cutting the panels to length, hooking into the previous panel, and affixing to the S Section.

Note: there may not be room to install cladding panels around the windows, at internal and external corners and at the end of the cladding zone as per the regular method. These panels will need to be trimmed down the length of the panel and fixed through the face. Use packers as required to bring the face of the panel level with the rest of the façade. These fixings will be concealed with the appropriate cover cap.

Once the end of the wall is reached, trim the panel to length, insert packers and fix through the face of the cladding. Note, the face fix screws should be installed behind the substrate of the previous façade, as these will be concealed by the start of the new wall of cladding.

Items On This Page			
Code	Description	Length	Supplied by Paneltec
SE260	Seam	7m	✓

## STEP 8 – INSTALL INTERNAL CORNER



Install TRM0201b Female into the internal corner.

Items On This Page			
Code	Description	Length	Supplied by Paneltec
TRM0201b	Stop End (Female)	7m	✓



**STEP 9 – INSTALL CLADDING (FROM EXTERNAL CORNER)**

Install packers adjacent to TRM0201b and trim the raised hook/starter section from the length of the Seam panel. Install this trimmed first panel up against TRM0201b and fix through the face of the cladding into the packers.

Install as standard along the length of the wall until the end of the wall is reached. To complete the wall, trim the panel to length, insert packers, and fix through the face of the material.

Items On This Page			
Code	Description	Length	Supplied by Paneltec
SE260	Seam	7m	✓

## STEP 10 – CLIP ON COVER PIECE



Install the cover sections to the two-piece trims to conceal rivets and cut edges. Push firmly into place, a rubber mallet may be used paying careful attention to the finish.

Items On This Page			
Code	Description	Length	Supplied by Paneltec
TRM0201a	Stop End (Male)	7m	✓



## 10. SEAM VERTICAL

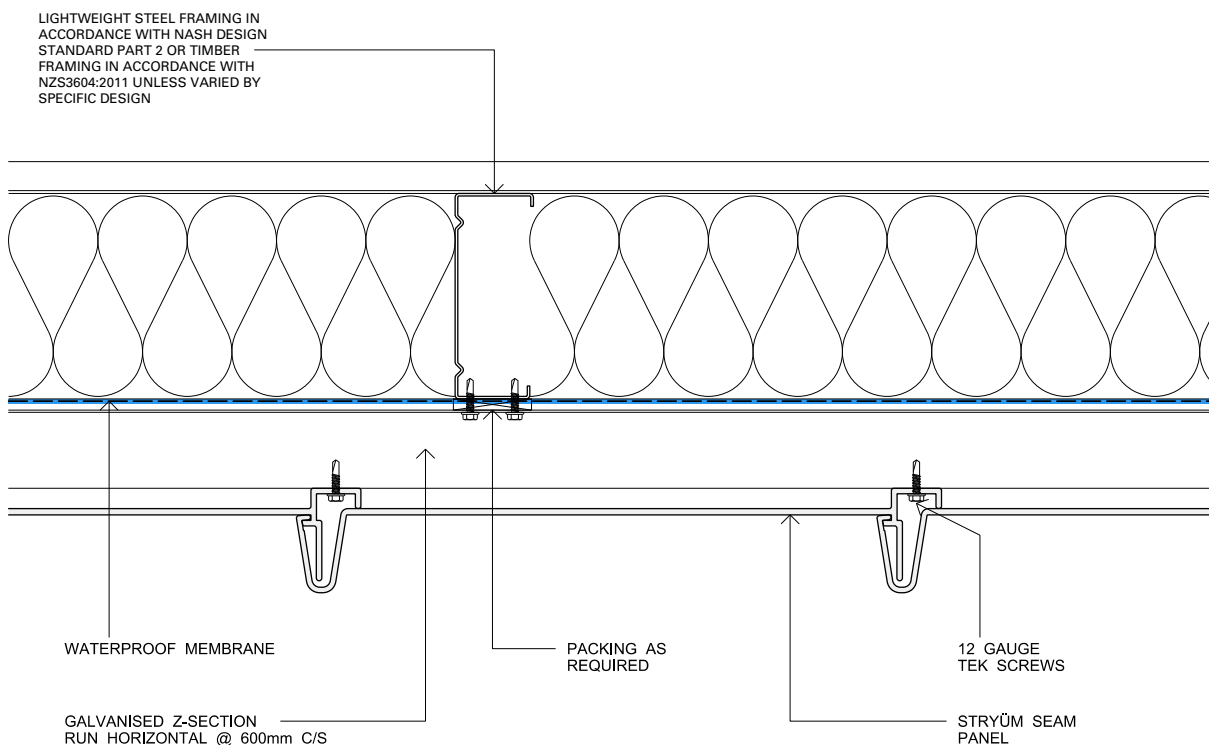
### 10.2 GENERAL DETAILS

---

# SEAM VERTICAL – GENERAL DETAILS

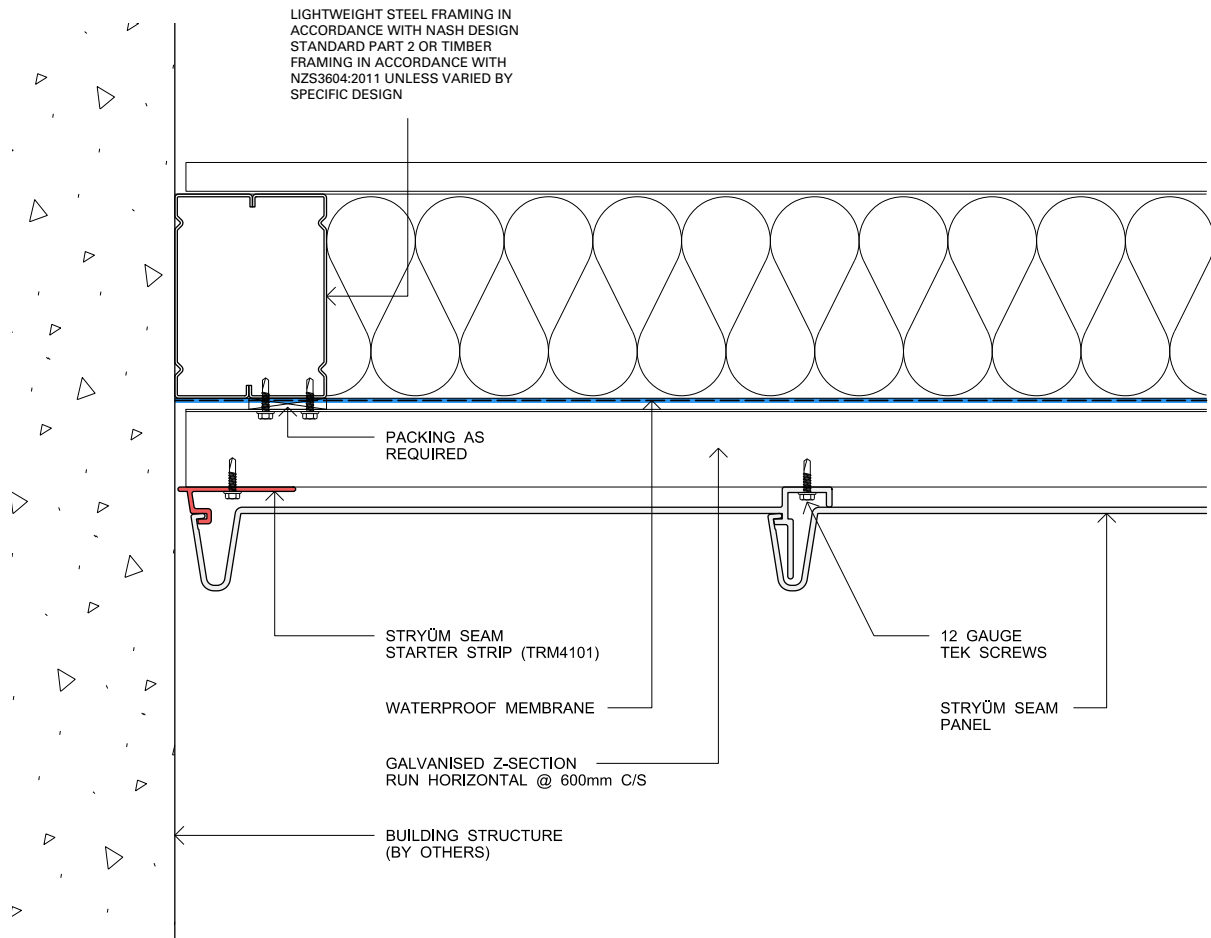
These details are of a generic nature. In all cases use these details as a guide only and refer to the Paneltec design library or building consent for finalised details.

## SEAM V PANEL CONNECTION

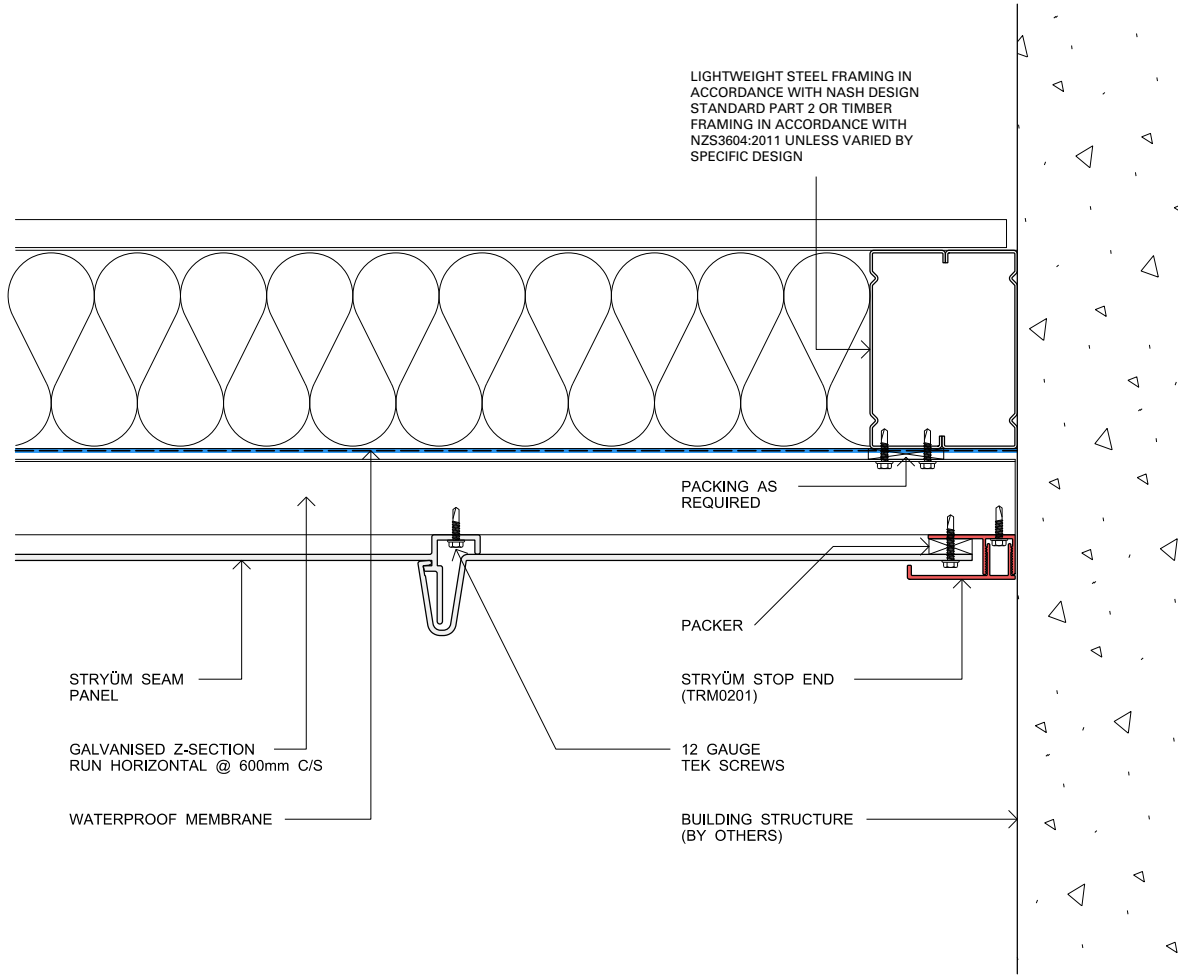




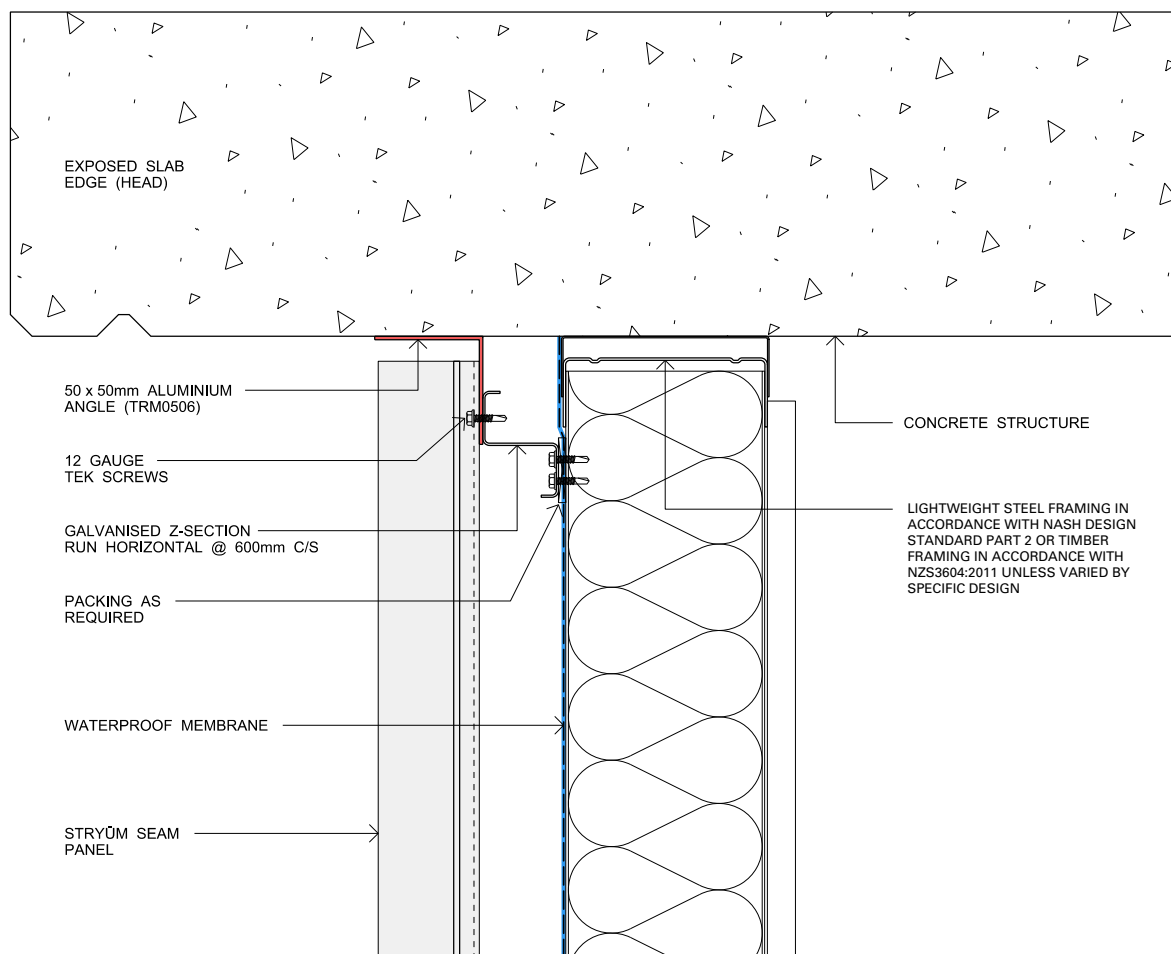
## SEAM V PANEL START



## SEAM V PANEL END

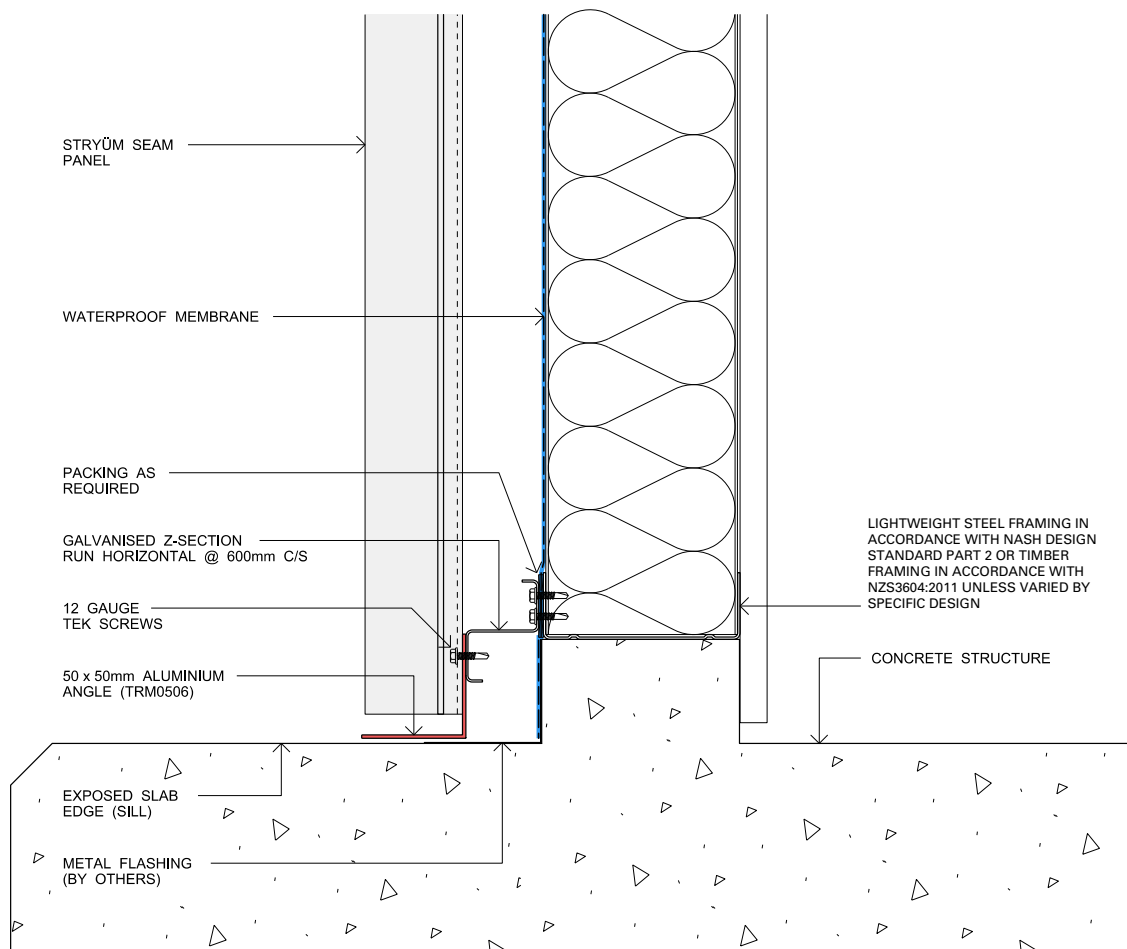


## SEAM V HEAD SLAB JUNCTION

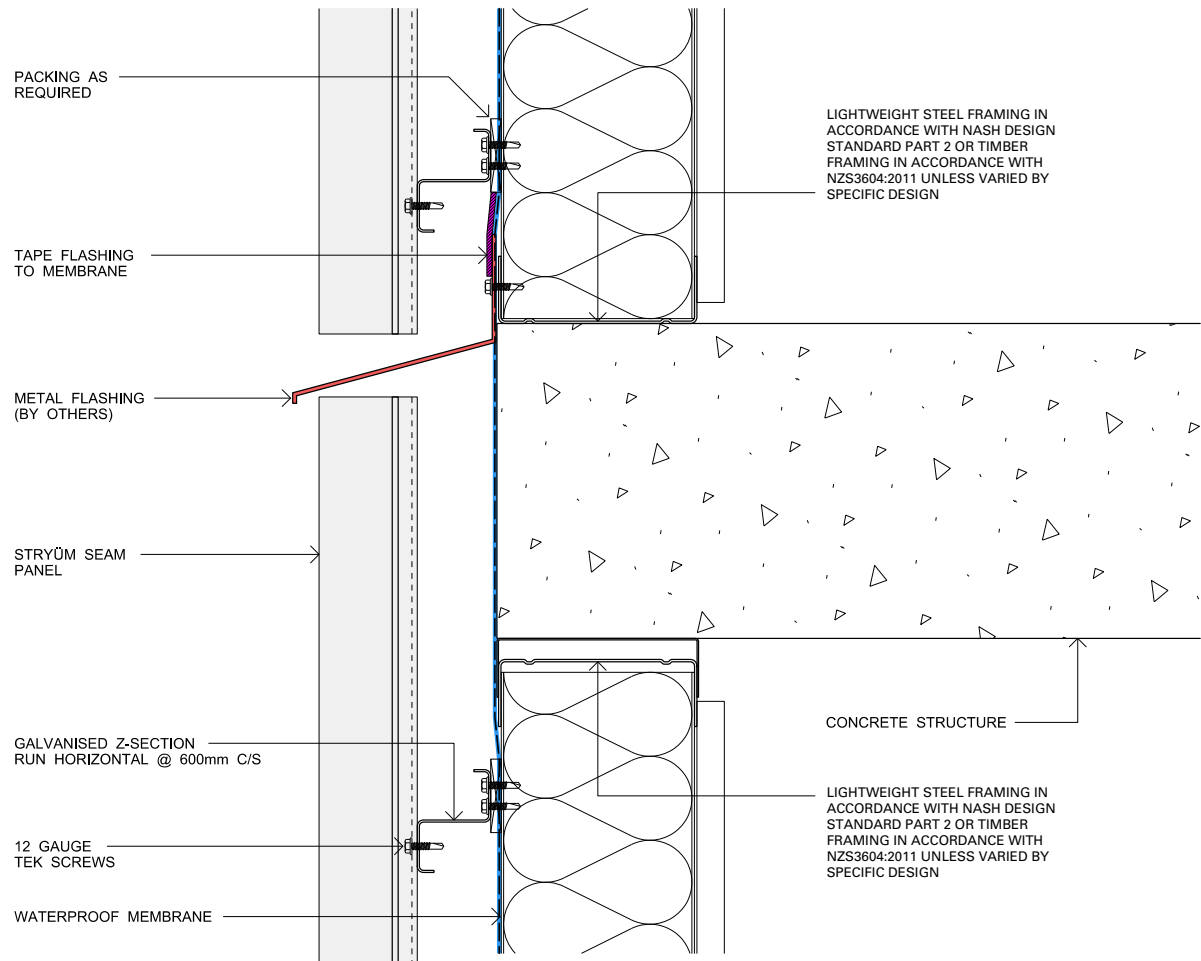




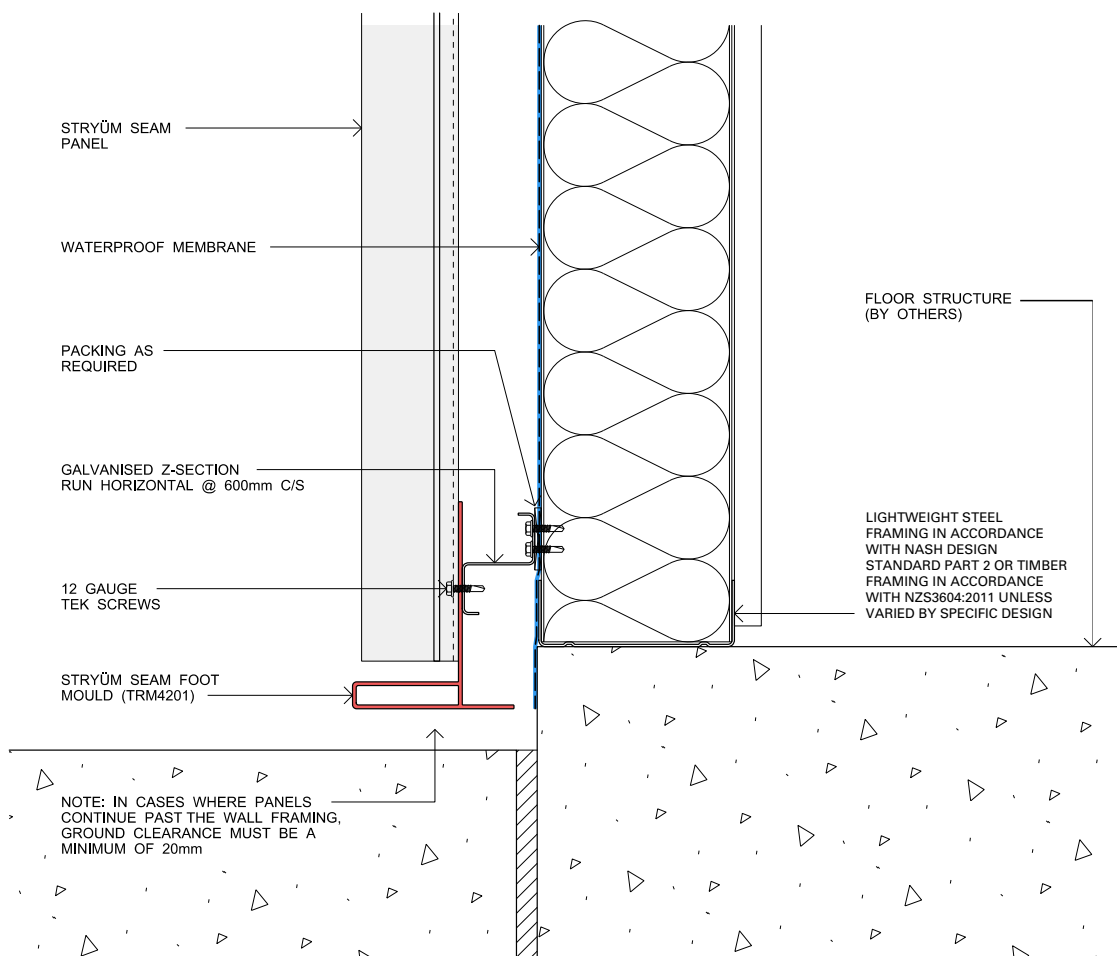
## SEAM V BASE SLAB JUNCTION



## SEAM V SLAB JUNCTION CONCEALED

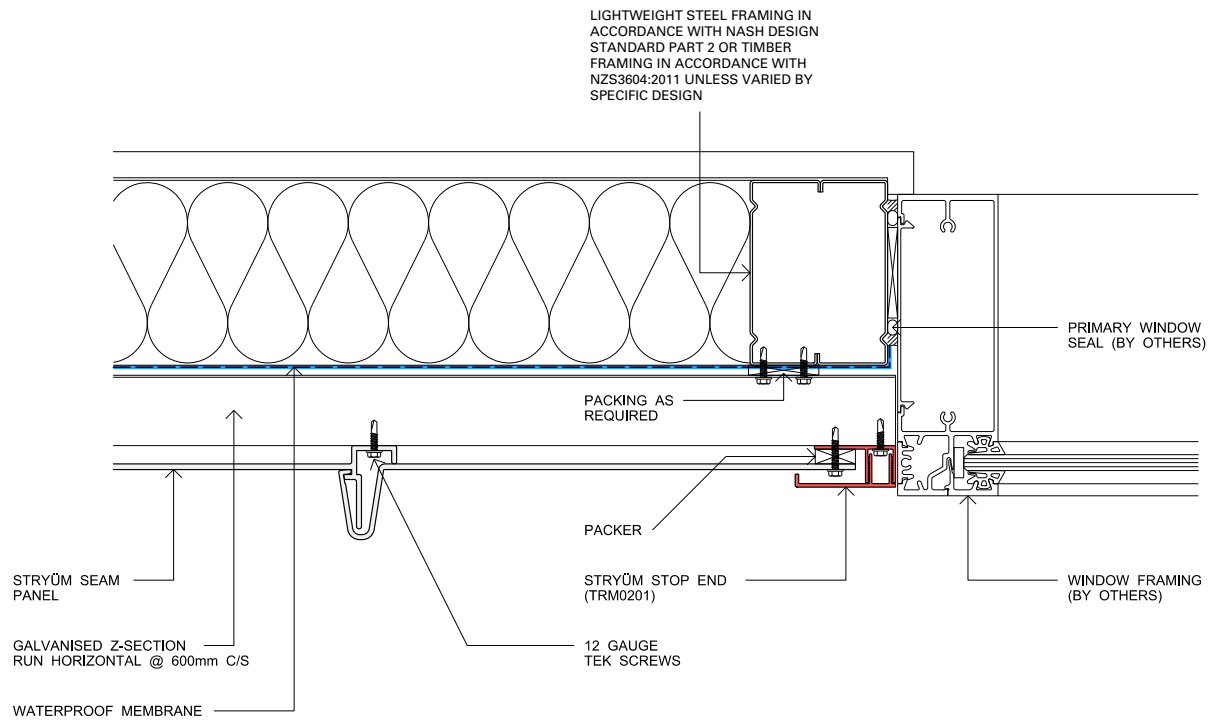


## SEAM V PANEL END FLOOR

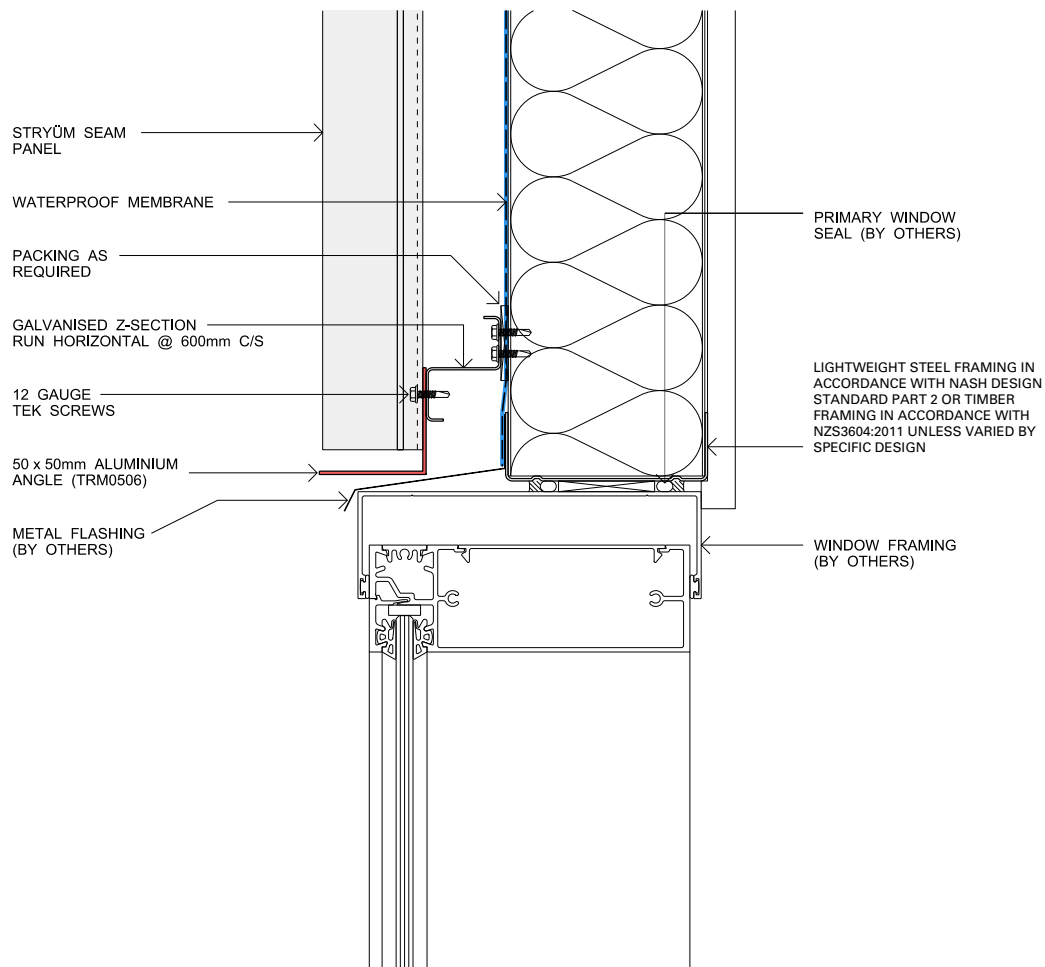




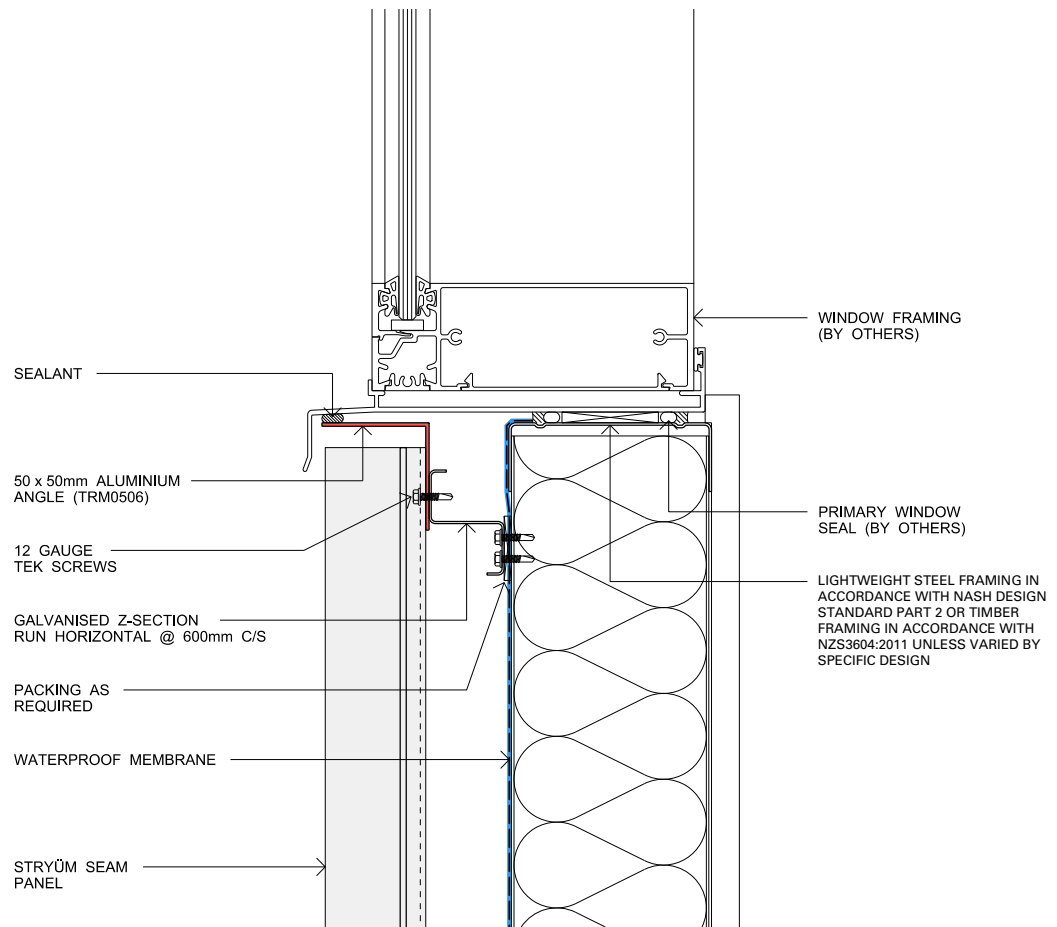
## SEAM V WINDOW JAM



## SEAM V WINDOW HEAD

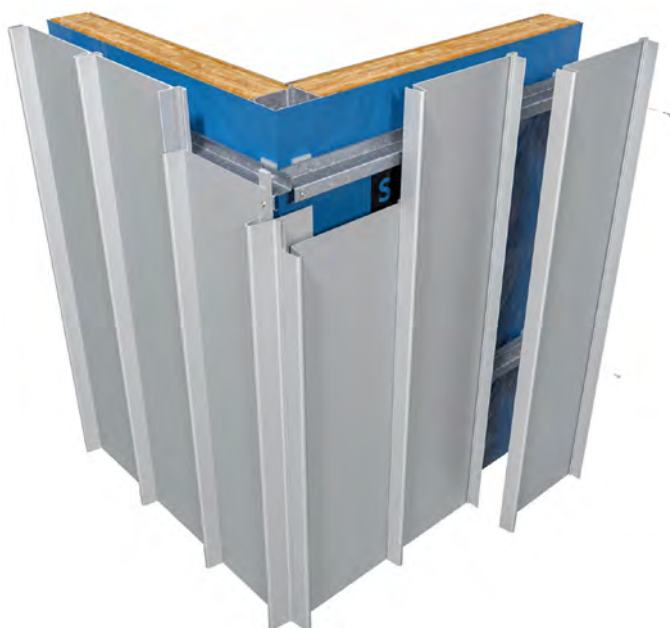
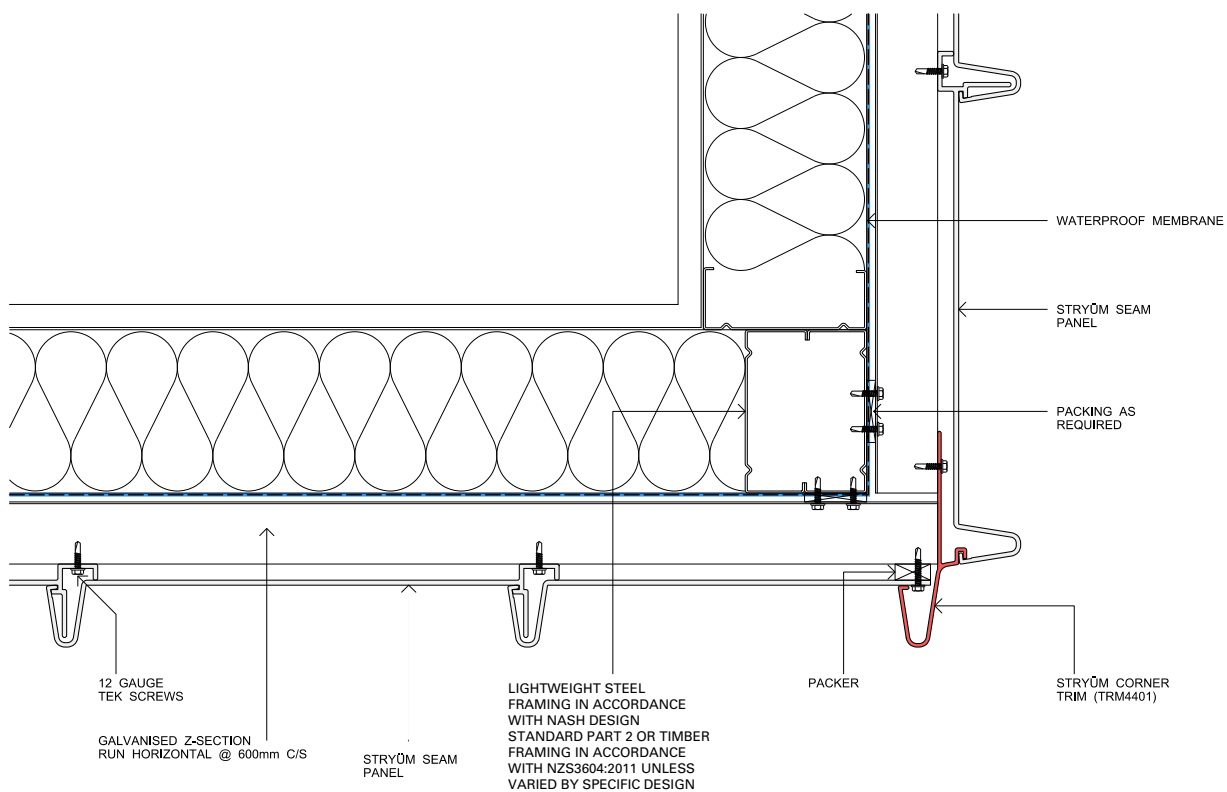


## SEAM V WINDOW SILL

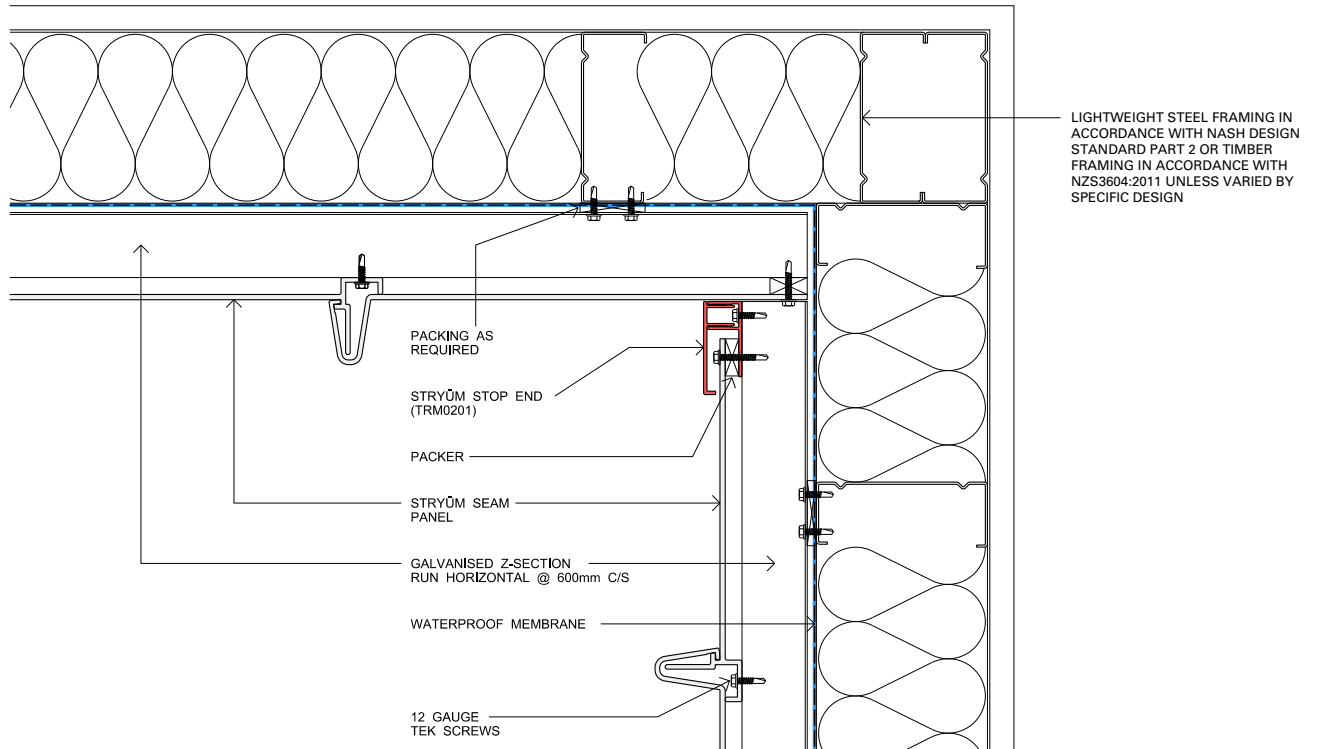




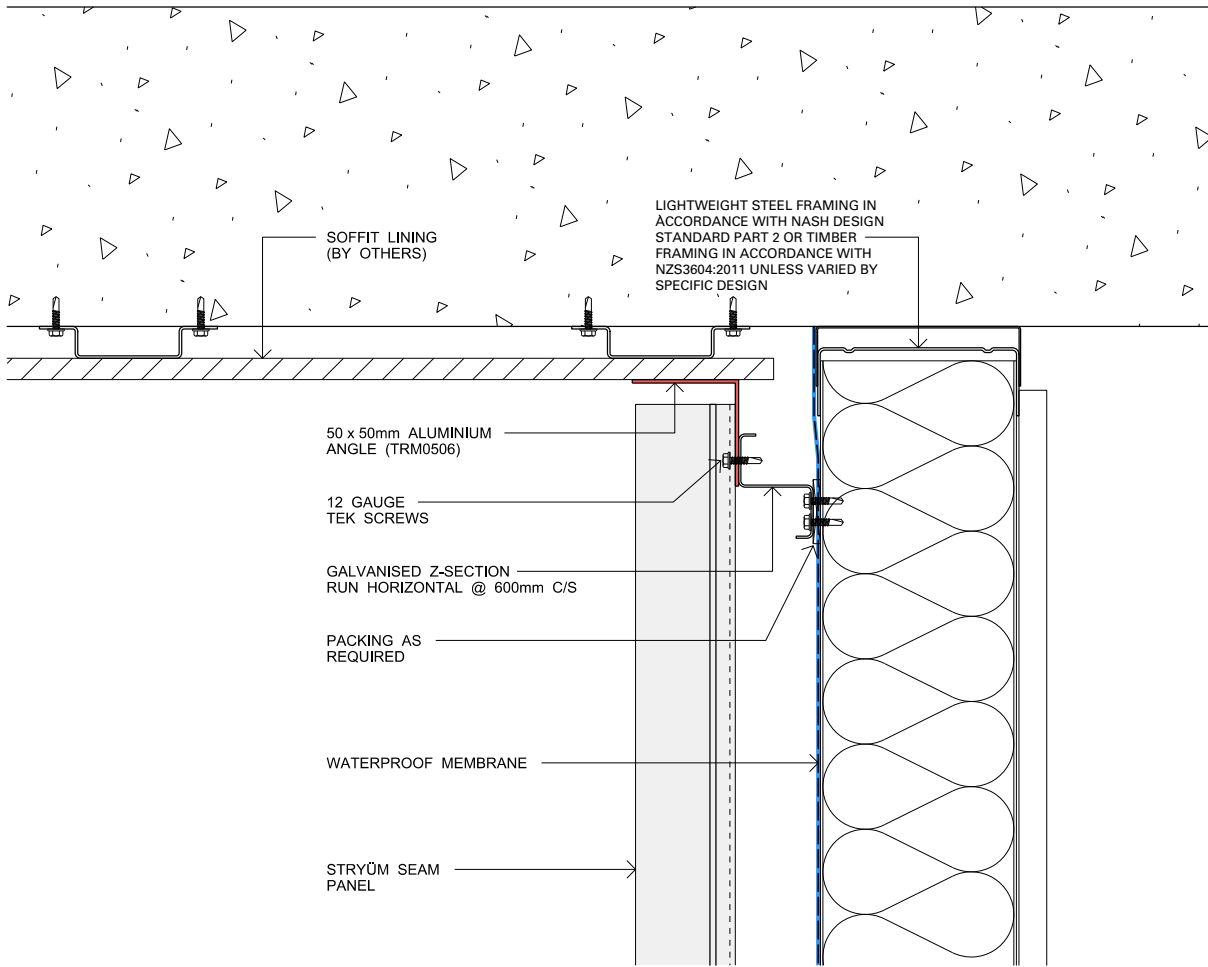
## SEAM V EXTERNAL CORNER



## SEAM V INTERNAL CORNER

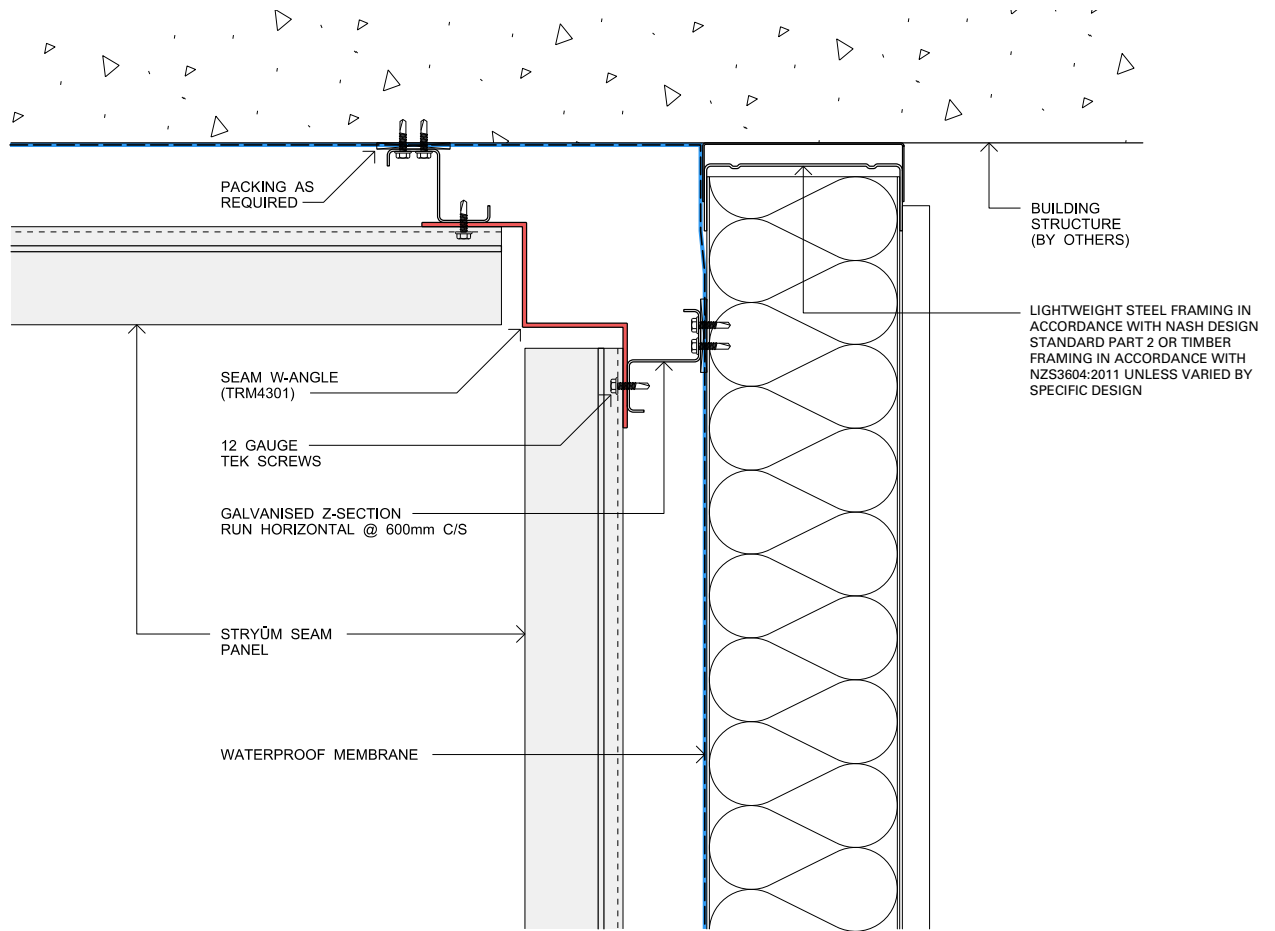


## SEAM V SOFFIT

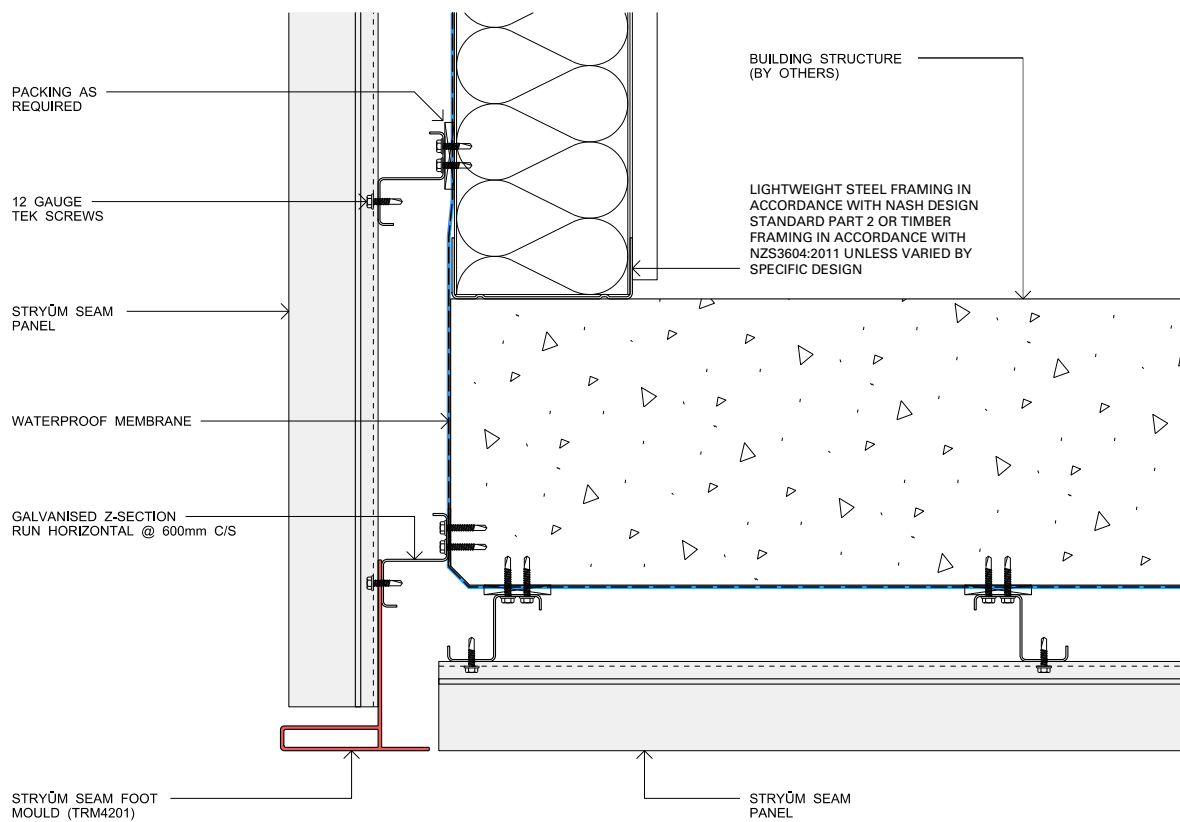




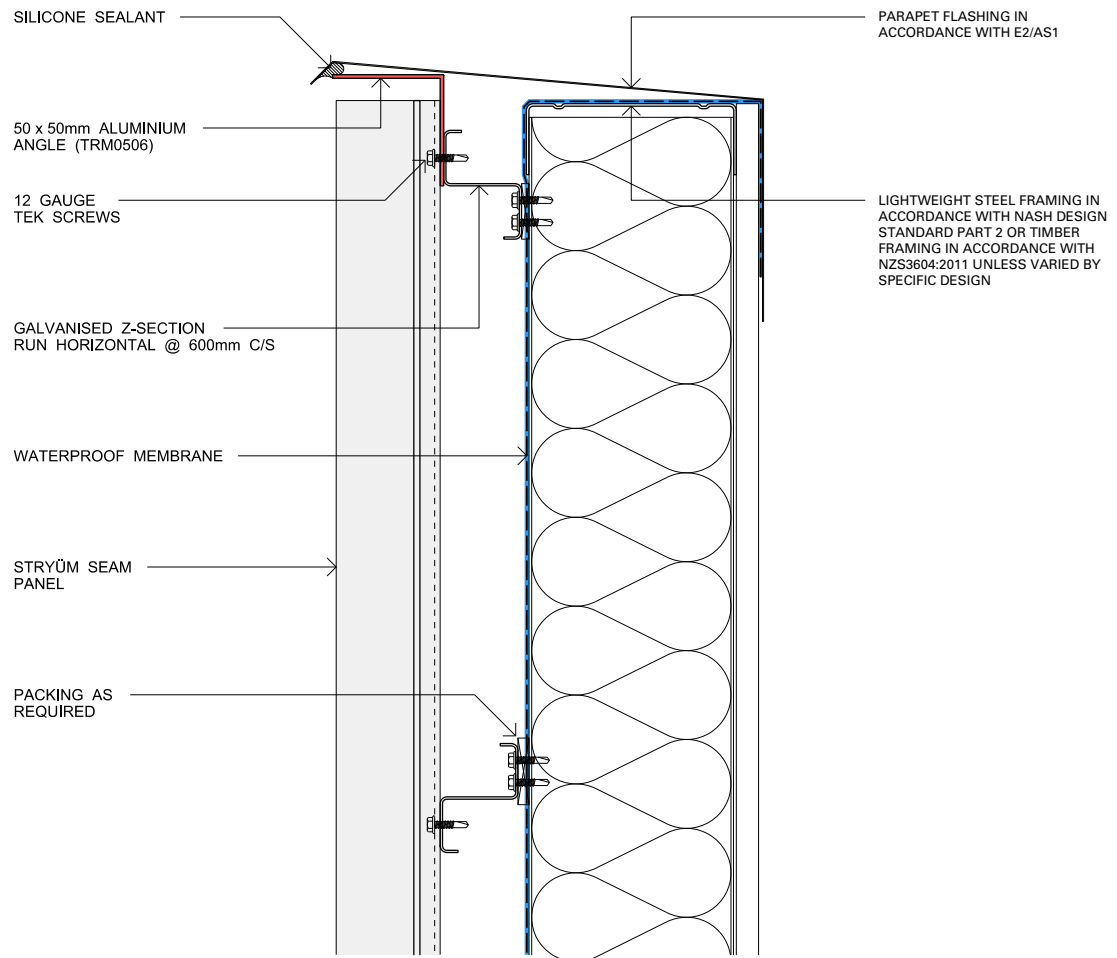
## SEAM V SOFFIT JUNCTION 1



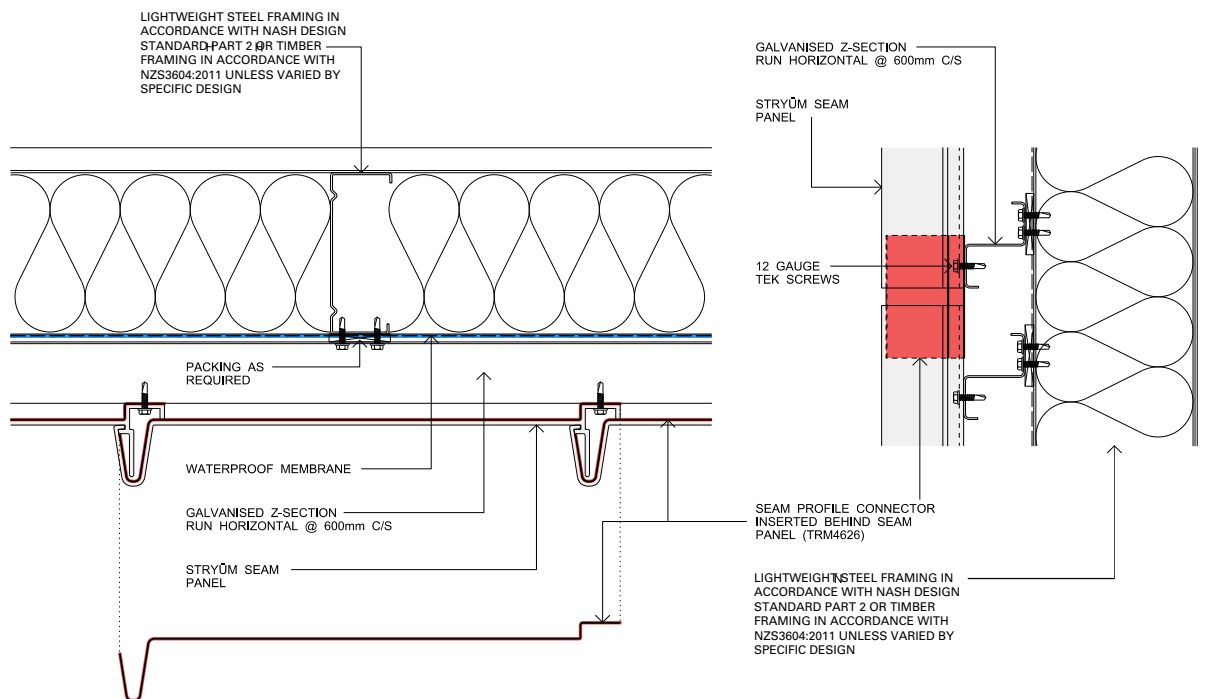
## SEAM V SOFFIT JUNCTION 2



## SEAM V PARAPET



## SEAM V PANEL CONNECTOR









# Paneltec

NEW ZEALAND LTD

Inspiring facade design - Creating possibilities

## **For Further Technical Assistance Contact:**

**p.** 09 439 4357   **e.** [info@paneltec.co.nz](mailto:info@paneltec.co.nz)   **w.** [www.paneltec.co.nz](http://www.paneltec.co.nz)

## **DISCLAIMER**

While the information provided relating to Paneltec NZ Ltd products is true to the tests and measures available to us, the information provided in this article is general in nature only and does not constitute project-specific building, construction or fire-safety advice. Before acting on any information on this document, you should consider the appropriateness of the information having regard to your project parameters and requirements. Paneltec products are deemed suitable or compliant after approval from building and construction professionals associated with specific projects and developments. If you'd like some further insight about this topic, contact Paneltec on 0508 726 358 or email [info@paneltec.co.nz](mailto:info@paneltec.co.nz). We're here to see how we can help.