



Interlocking • Aluminium • Façade

NEW ZEALAND

# INSTALLATION GUIDE SHADOW HORIZONTAL

[WWW.PANELTEC.CO.NZ](http://WWW.PANELTEC.CO.NZ)





## 9. SHADOW HORIZONTAL

### 9.1 INSTALLATION GUIDE

---

#### DOCUMENT TRACKING

---

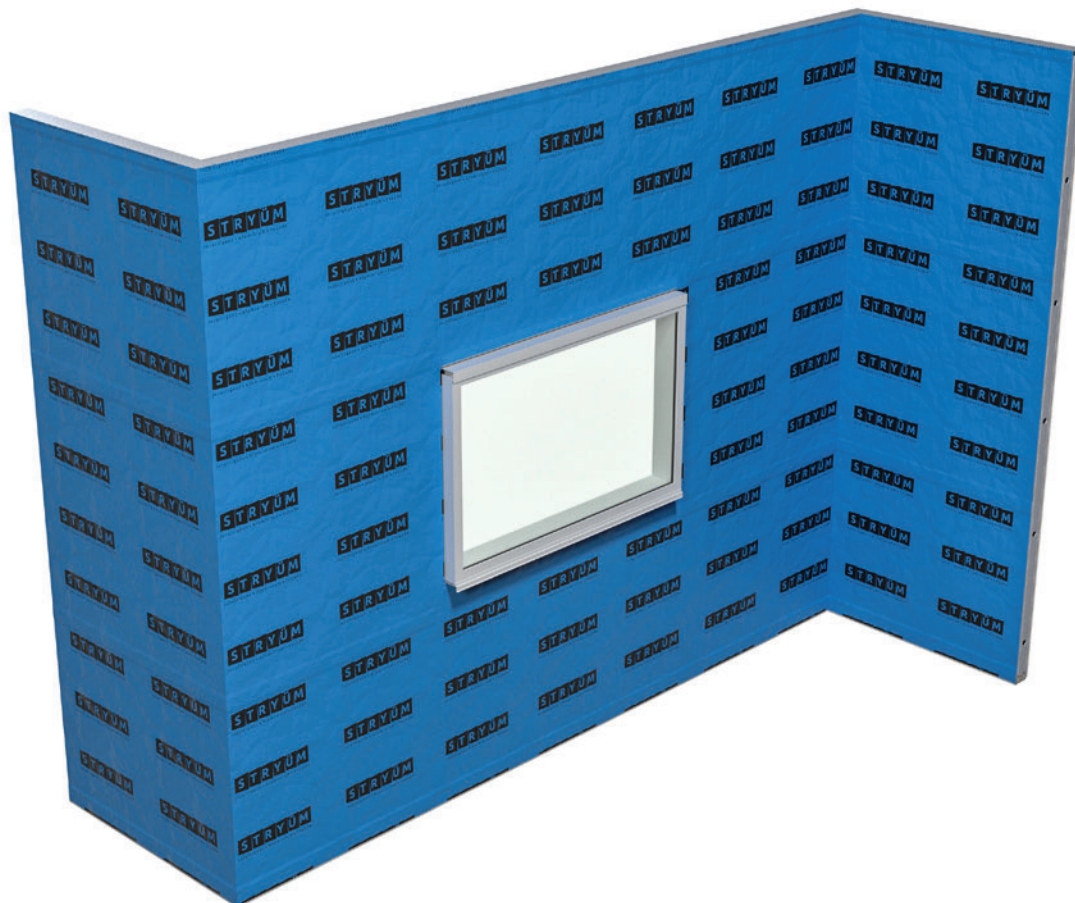
VERSION #	DATE	CHANGES
1.0	01/02/22	Initial Issue - New Zealand



# SHADOW HORIZONTAL – INSTALLATION GUIDE

Please ensure you review the complete Stryüm Shadow Horizontal details on pages 11-25 to ensure you order all the required trims, the following step by step is a guide only.

## STEP 1 – WATERPROOF MEMBRANE



As Stryüm is a rainscreen façade, a weathertight membrane must be installed over the supporting wall. This membrane needs to meet the project specific requirements for weathertightness and be installed as per manufacturers guidelines. All penetrations through the membrane must be sealed.

Items On This Page			
Code	Description	Length	Supplied by Paneltec
N/A	Waterproof Membrane - Solitex Extasana	N/A	<b>x</b>

## STEP 2 – SUBSTRATE



Packers for a plumb substrate and ventilation need to be installed as required prior to the installation of the Stryüm S Section.

Install Stryüm S Section substrate vertically. The substrate needs to be level to ensure the cladding is flat once installed. Any imperfections in this substrate will be highlighted once the panels are installed.

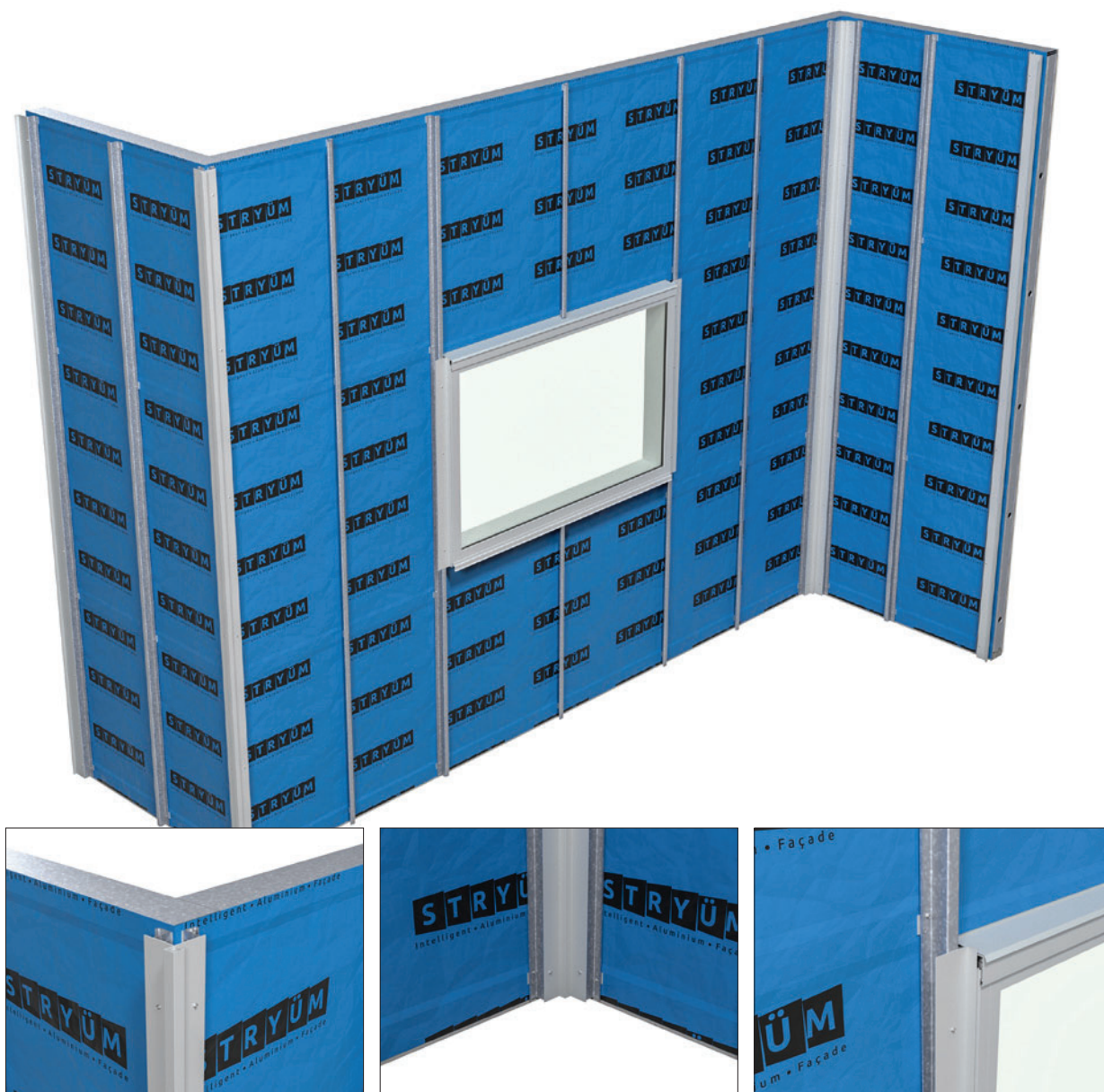
Stryüm S Sections are installed at maximum 600mm centres. Project specific requirements may dictate shorter span lengths.

### Items On This Page

Code	Description	Length	Supplied by Paneltec
TRM0901	35mm Stryüm S Section	5.8m	✓



## STEP 3 – VERTICAL TRIMS

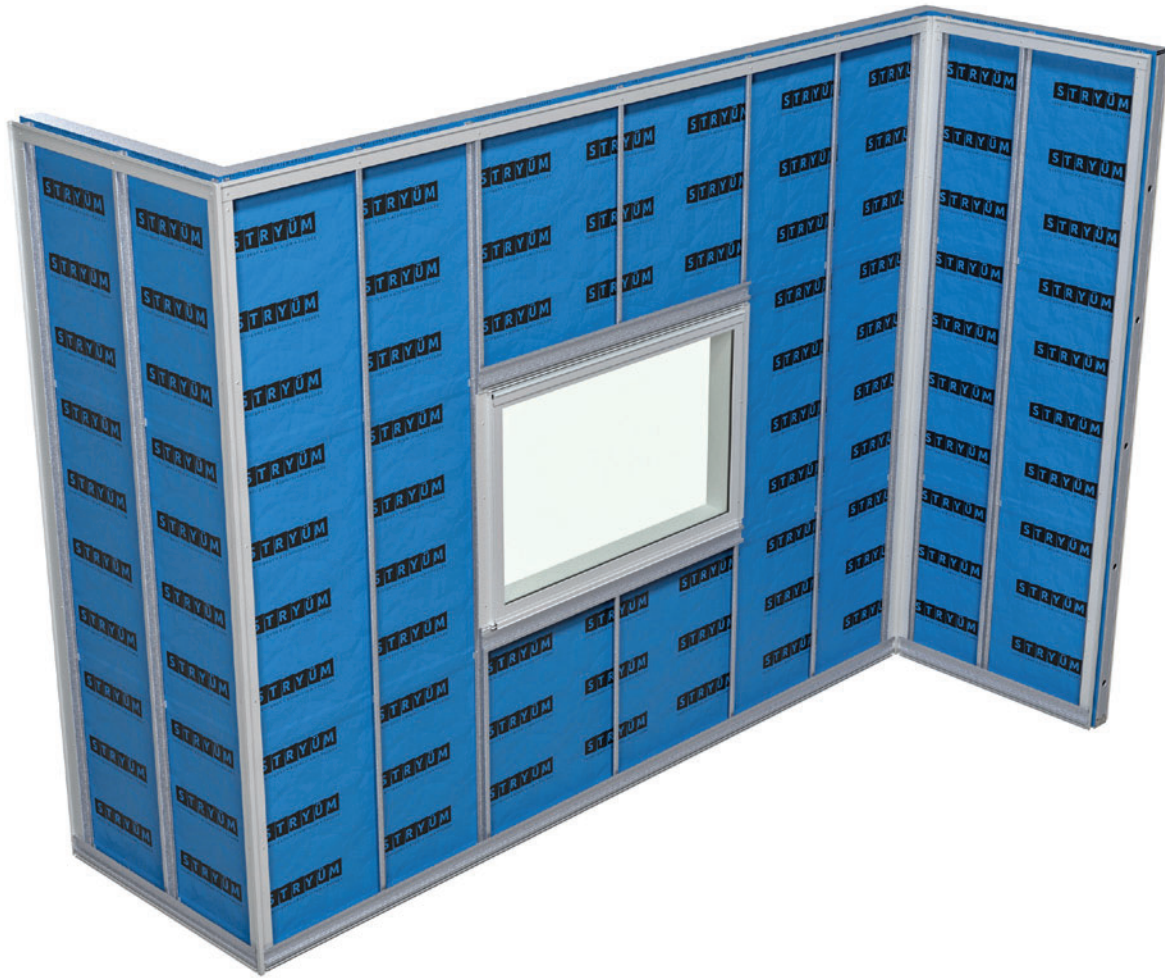


Install the vertical trims for the cladding, at the left and right of the cladding section, at either side of any wall penetrations, and at any corners. When installing down to an adjacent flat surface such as a garden bed or pathway, a minimum of 150mm from the ground is recommended to prevent rain splash back dirtying the façade.

If the cladding is being completed in sections, it is important the trims for either side of a cladding zone are installed prior to the cladding being installed to ensure a clean finish.

Items On This Page			
Code	Description	Length	Supplied by Paneltec
TRM0503	20 x 70 x 1.6 L-Angle	5.8m	✓
TRM1401	Shadow Box Section	5.8m	✓
TRM1303	Shadow W Section	5.8m	✓

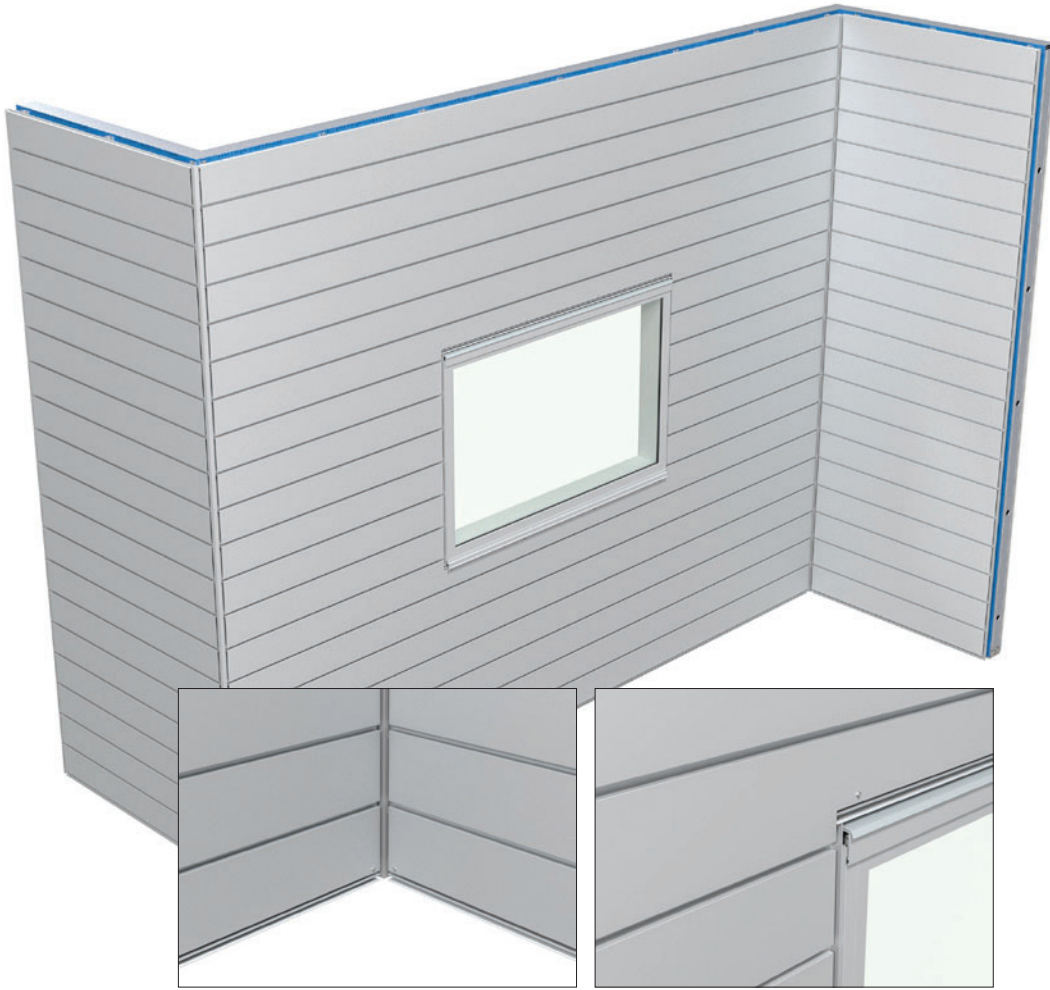
## STEP 4 – HORIZONTAL TRIMS



Install the horizontal trims for the cladding, at the top and bottom of the cladding section, above and below any wall penetrations, and at any slab junctions.

Items On This Page			
Code	Description	Length	Supplied by Paneltec
TRM1101	Shadow Starter Strip	5.8m	✓
TRM0201b	Stop End (Female)	5.8m	✓
T1550/15	15mm Steel Top Hat	5.8m	✓

## STEP 5 – INSTALL CLADDING



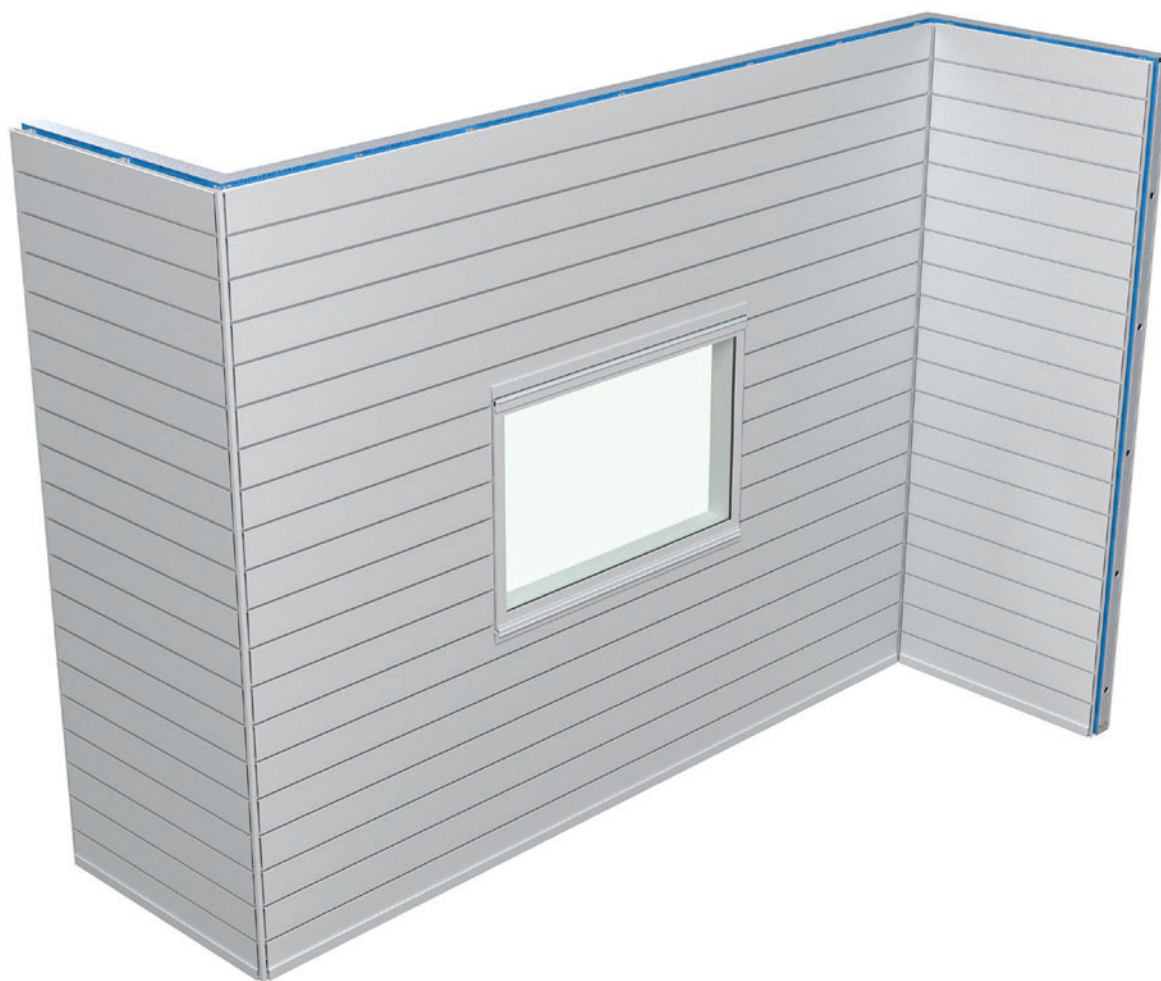
Install the cladding by cutting the panels to length, hooking the panel into the previous panel, and affixing to the S Section. Due to the rainscreen façade system Stryüm utilizes, a minimum airflow gap of 10mm must be maintained at the top and bottom of the cavity.

Note: there may not be room to install cladding panels around the windows, and at the top and bottom of the cladding zone as per the regular method. These panels will need to be trimmed down the length of the panel and fixed through the face. Use packers as required to bring the face of the panel level with the rest of the façade. These fixings will be concealed with the appropriate cover cap.

Items On This Page			
Code	Description	Length	Supplied by Paneltec
SH160	Shadow 160	5.8m	✓
OR			
SH200	Shadow 200	5.8m	✓
OR			
SH300	Shadow 300	5.8m	✓



## STEP 6 – CLIP ON COVER PIECES



Install the cover sections to the two-piece trims to conceal rivets and cut edges. Push firmly into place, a rubber mallet may be used paying careful attention to the finish.

Items On This Page			
Code	Description	Length	Supplied by Paneltec
TRM0201a	Stop End (Male)	5.8m	✓

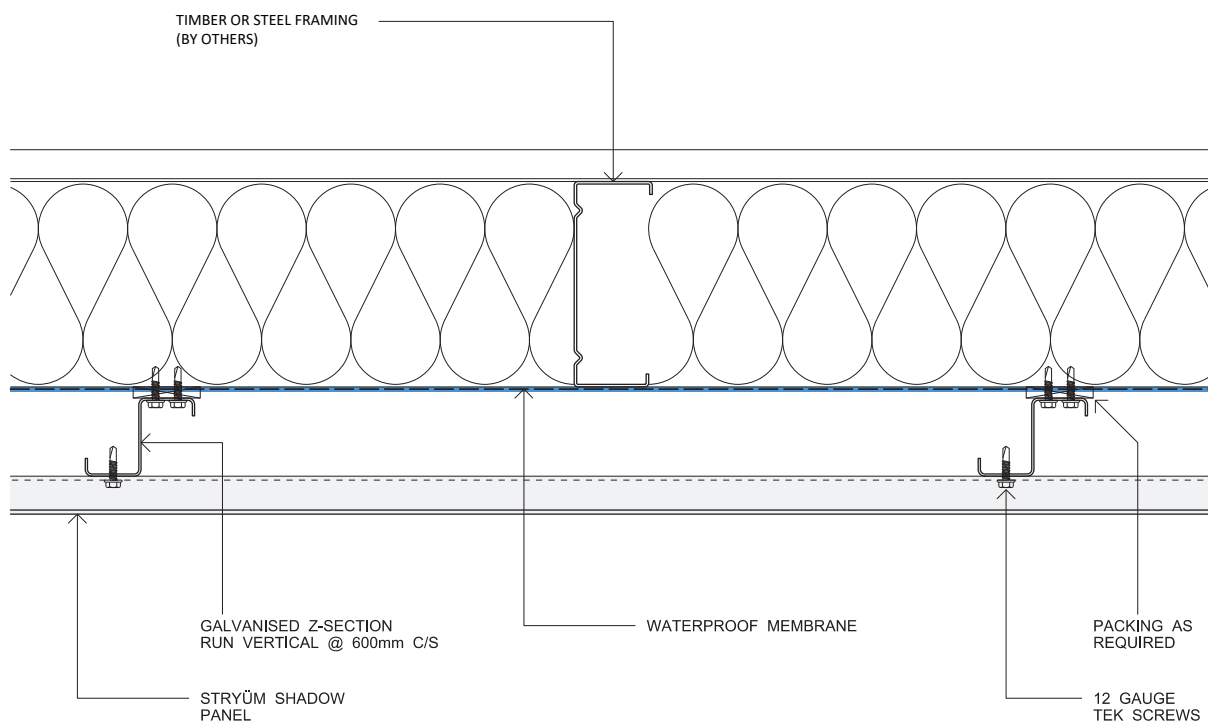
## 9. SHADOW HORIZONTAL

### 9.2 GENERAL DETAILS

---

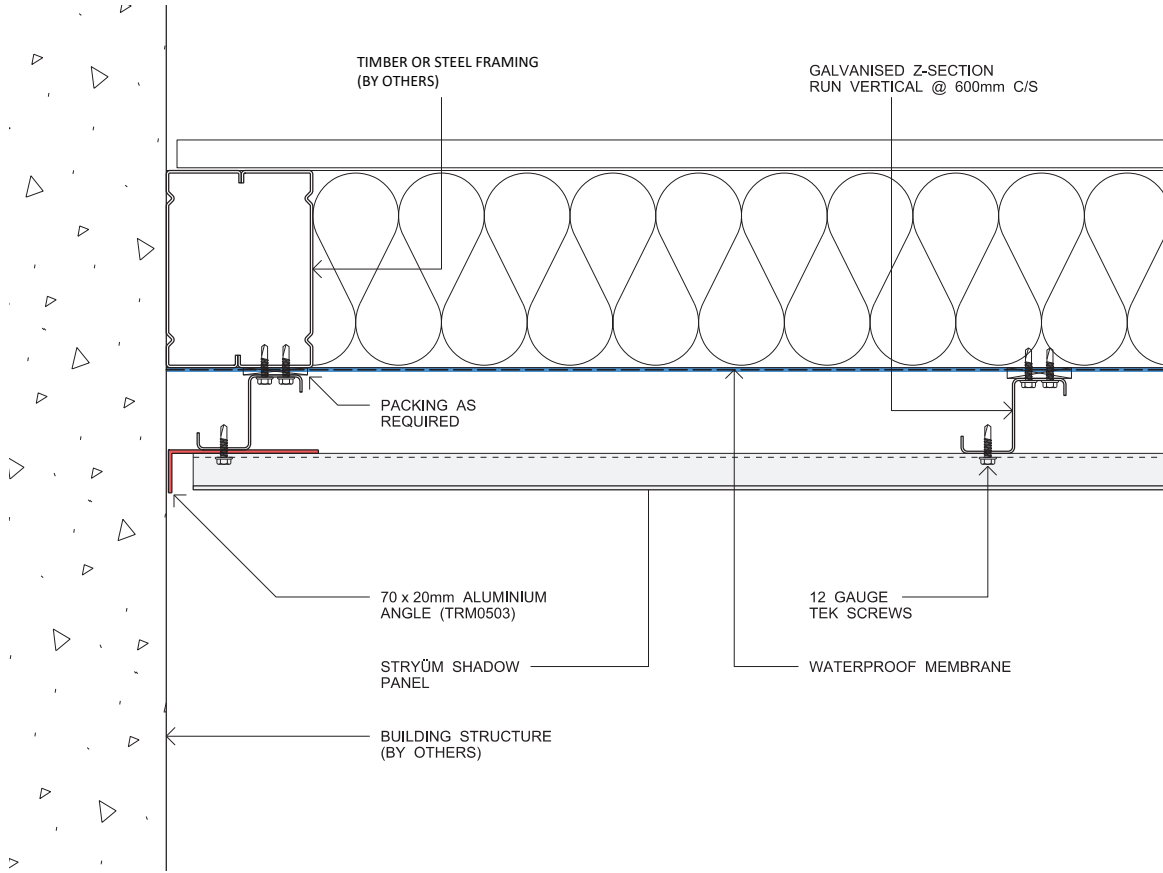
# SHADOW HORIZONTAL – GENERAL DETAILS

## SHADOW H PANEL CONNECTION

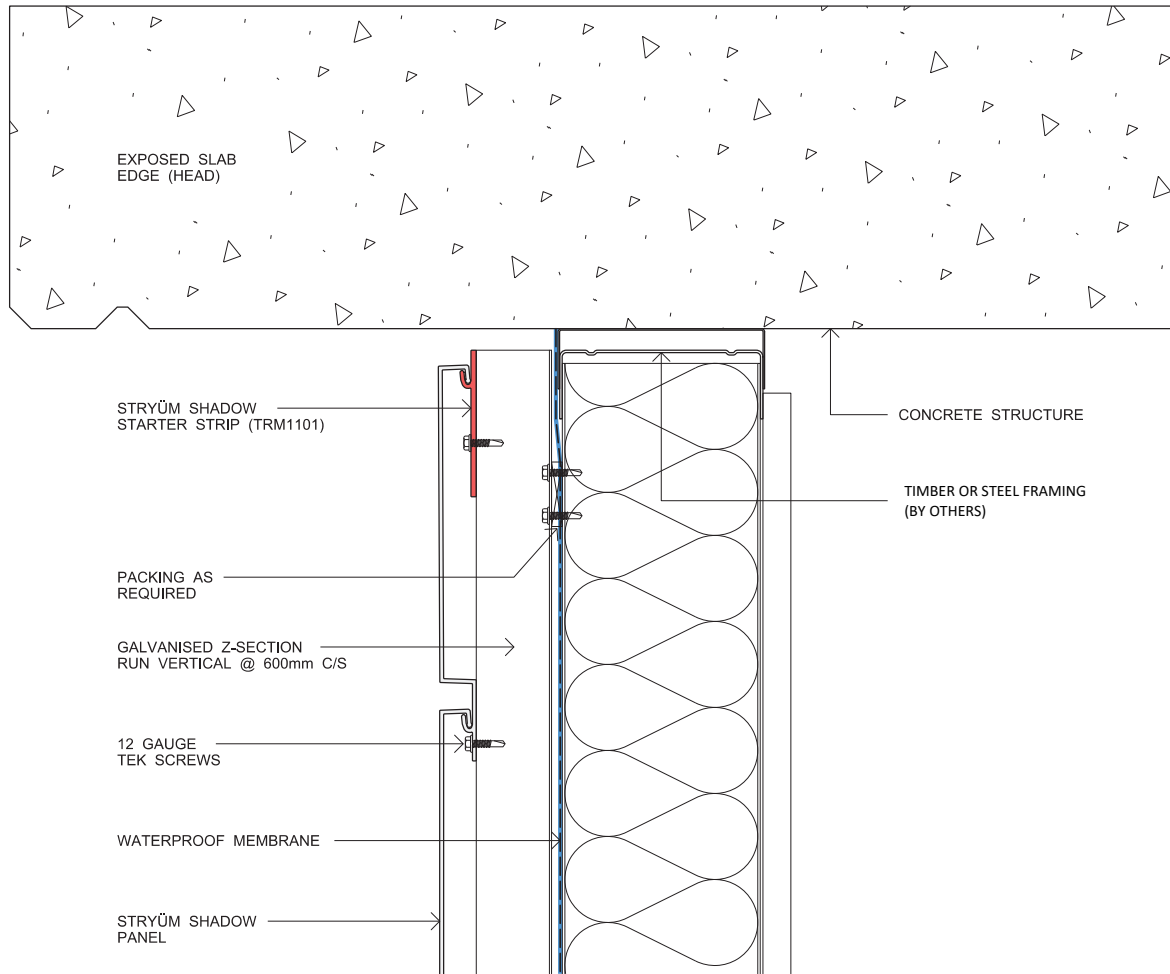




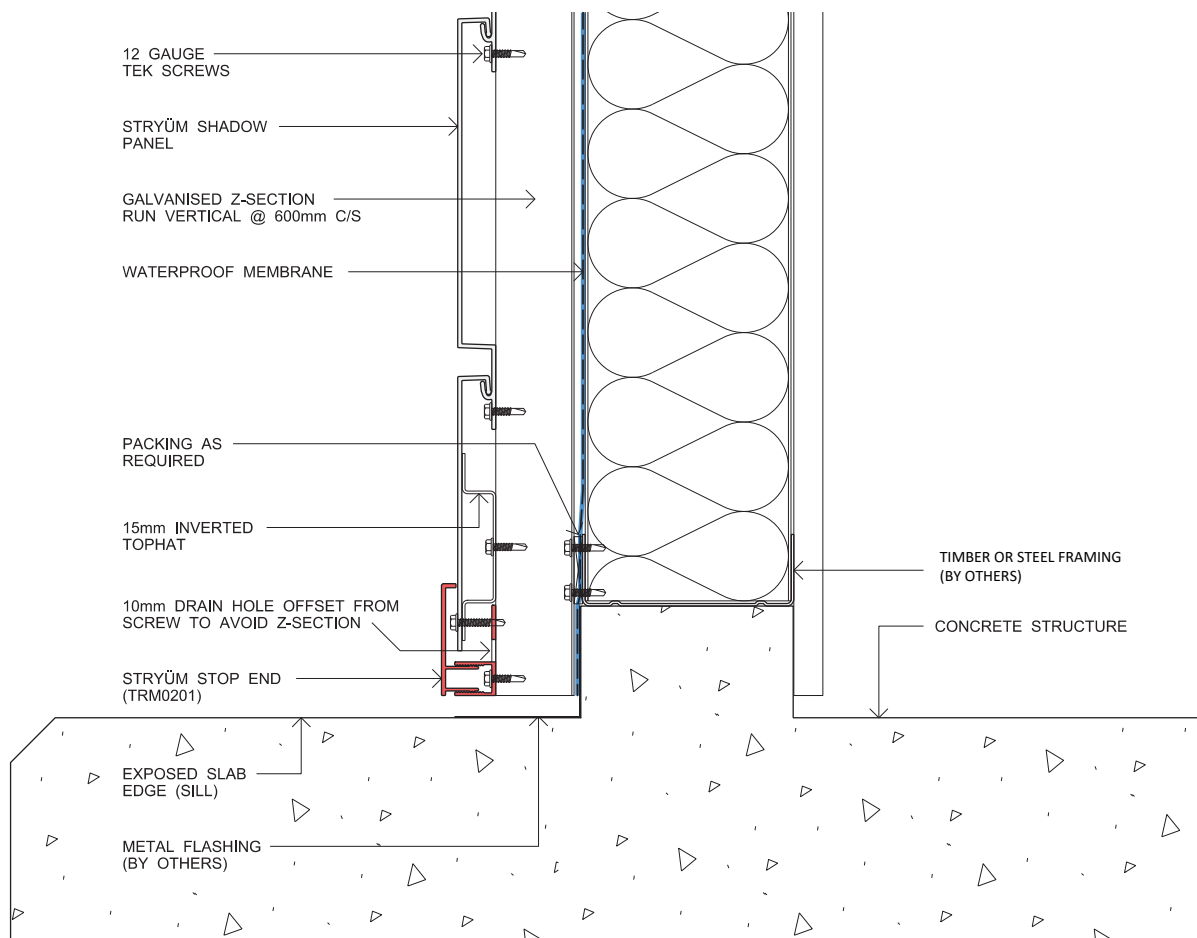
## SHADOW H PANEL START END



## SHADOW H HEAD SLAB JUNCTION

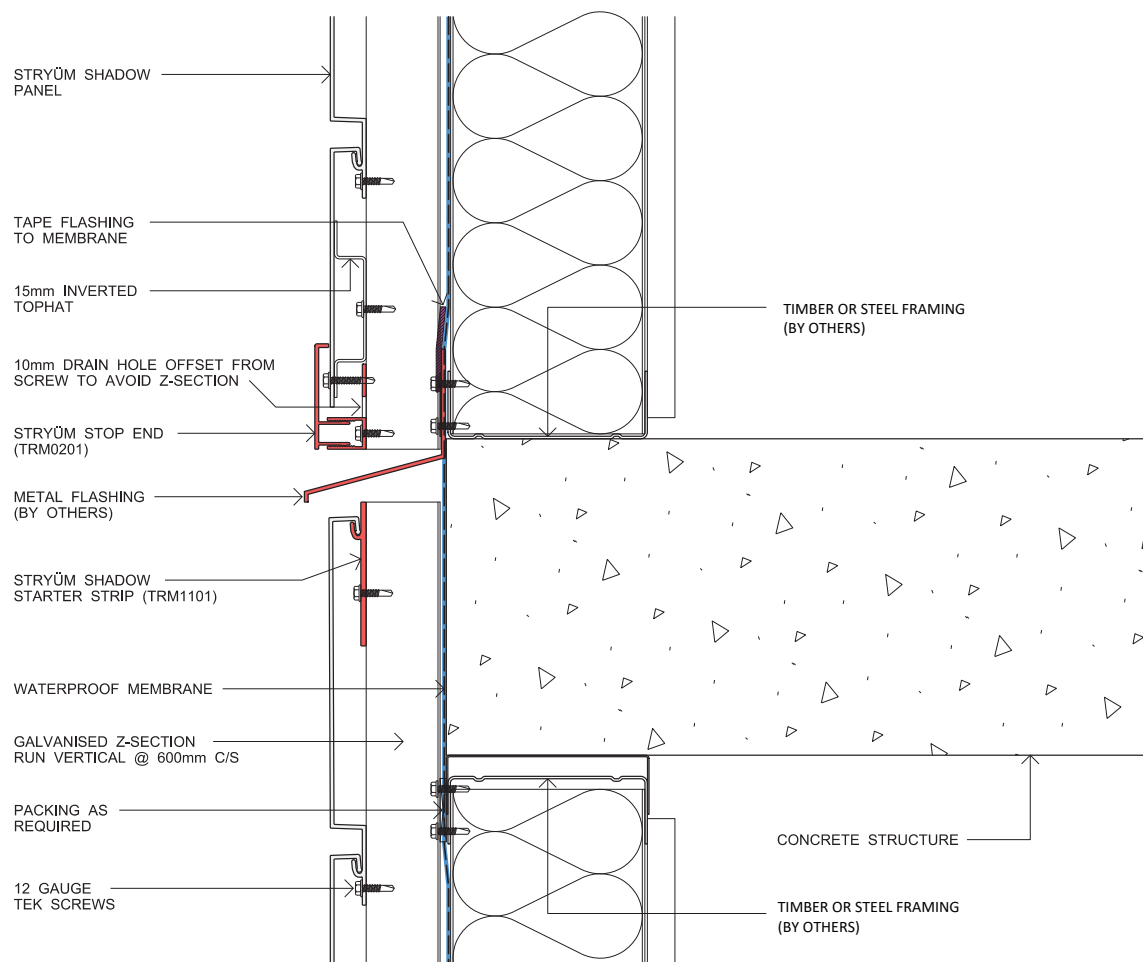


## SHADOW H BASE SLAB JUNCTION

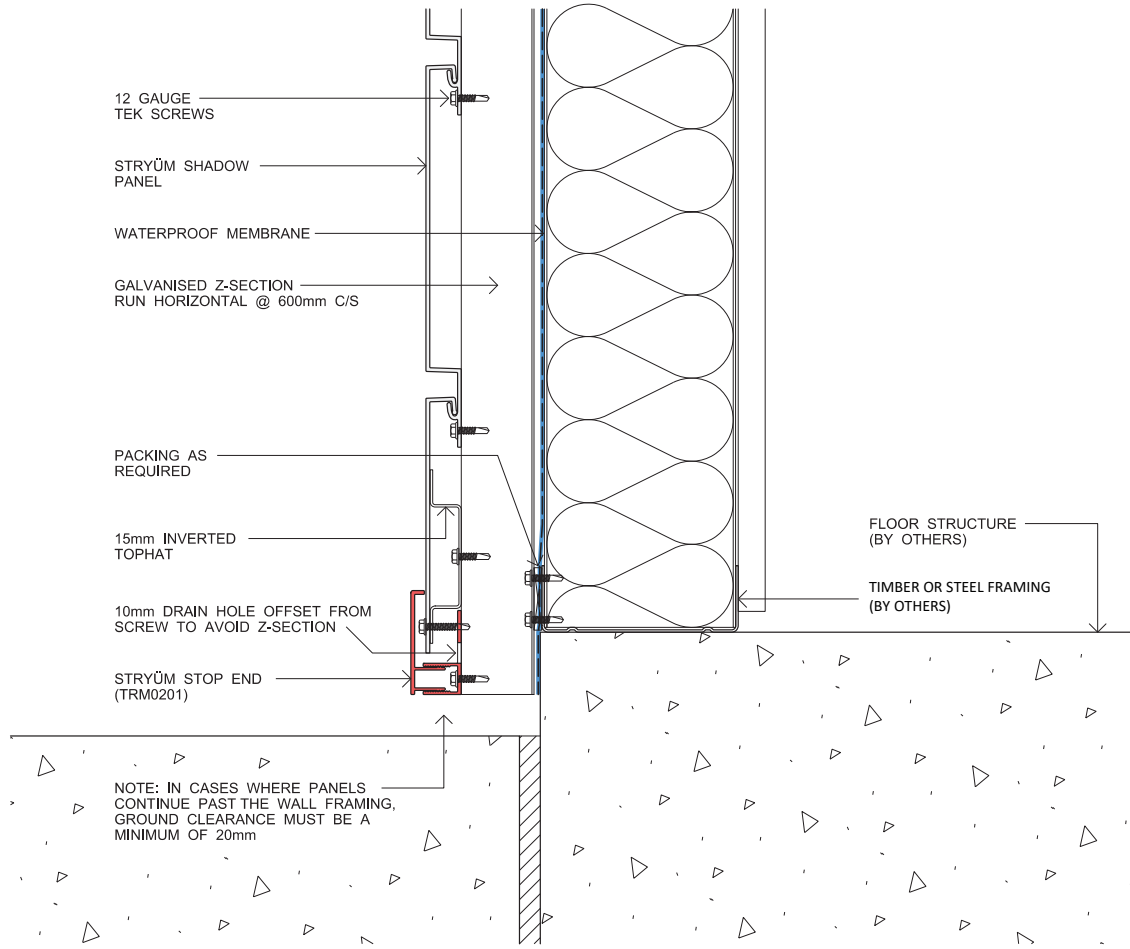




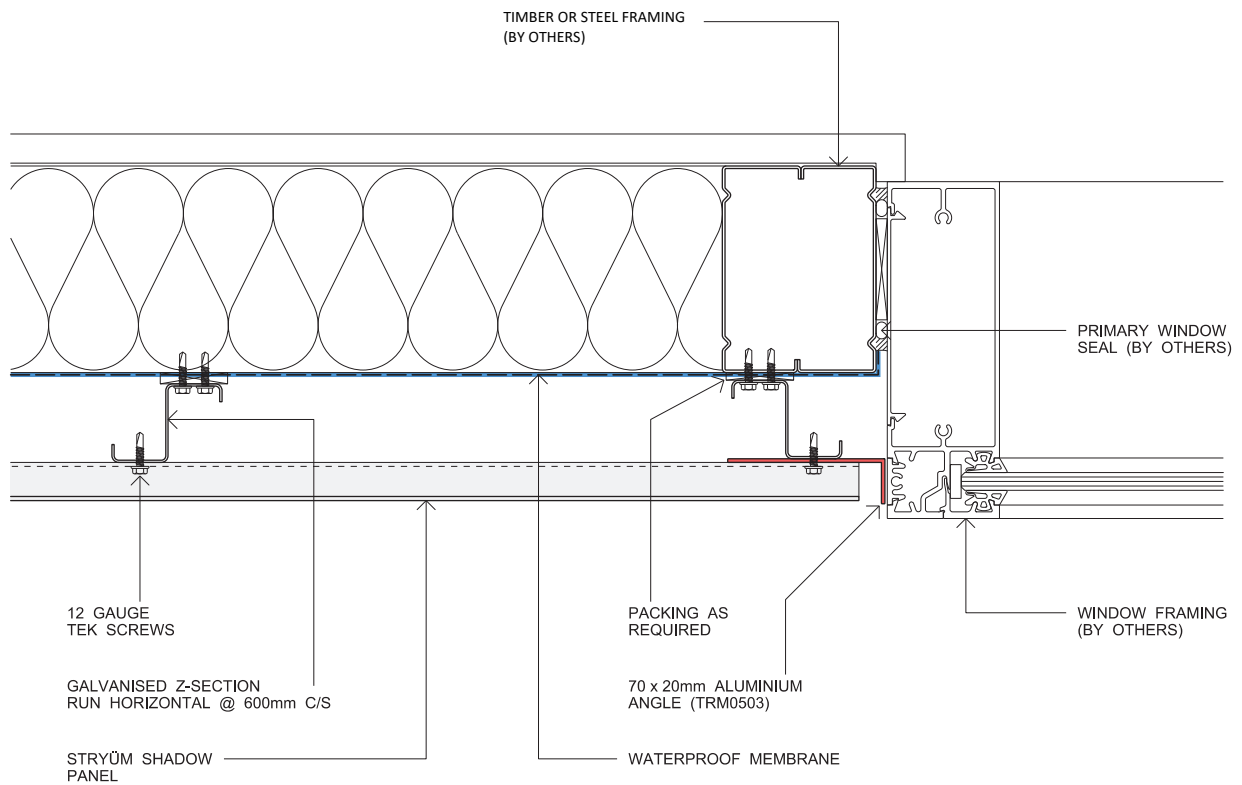
## SHADOW H SLAB JUNCTION CONCEALED



## SHADOW H PANEL END FLOOR

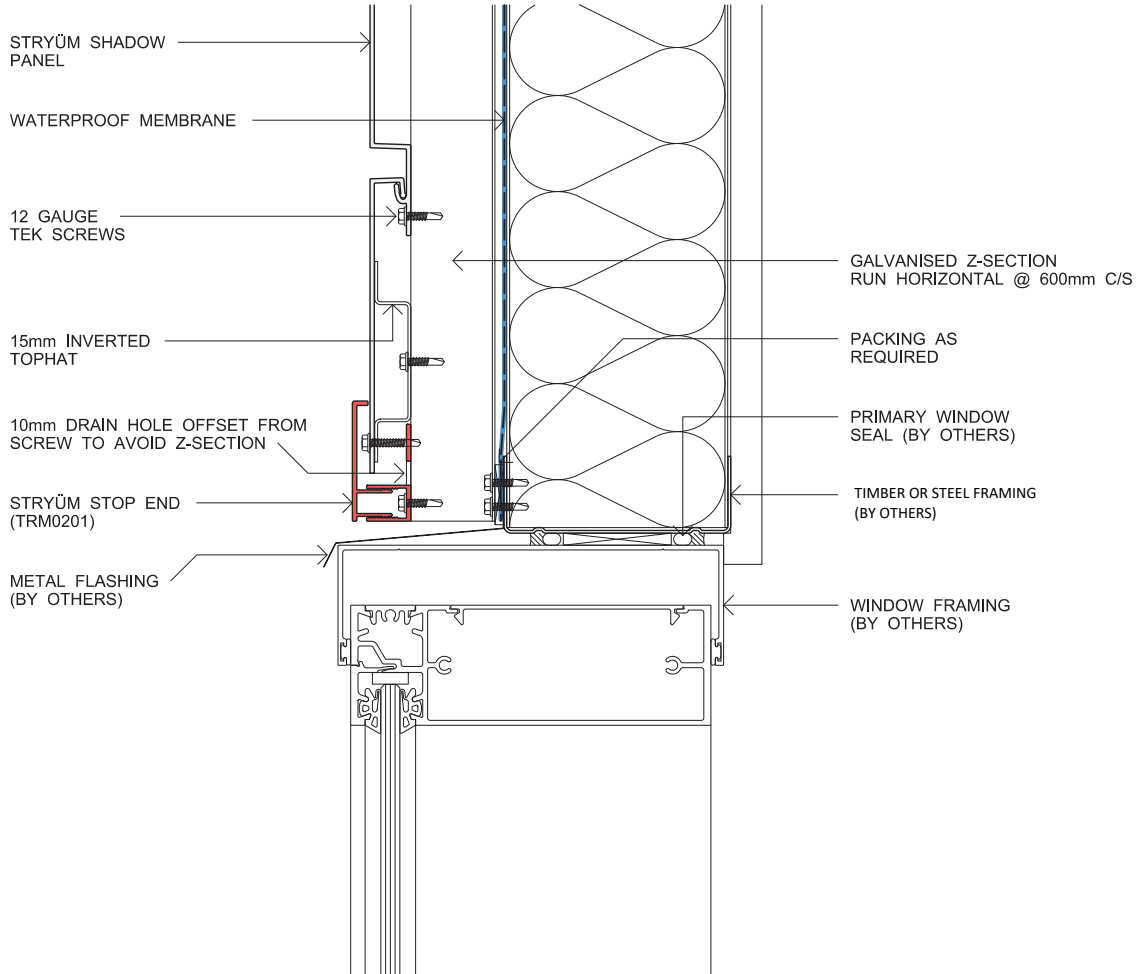


## SHADOW H WINDOW JAMB

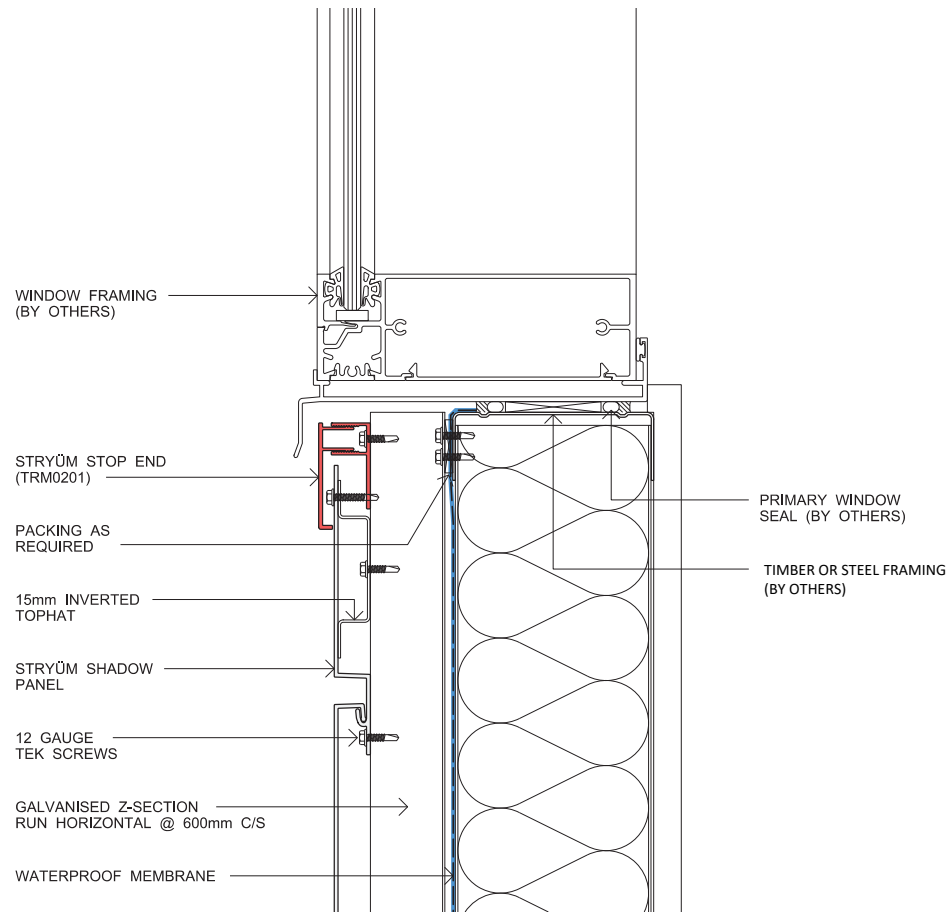




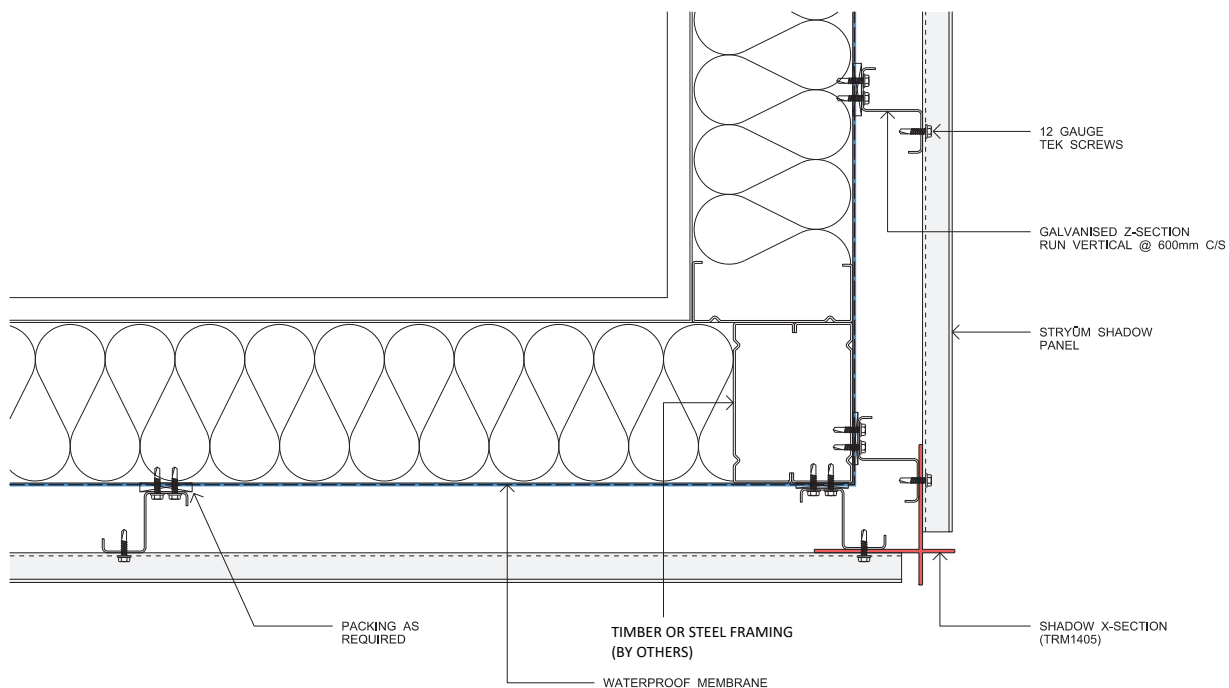
## SHADOW H WINDOW HEAD



## SHADOW H WINDOW SILL

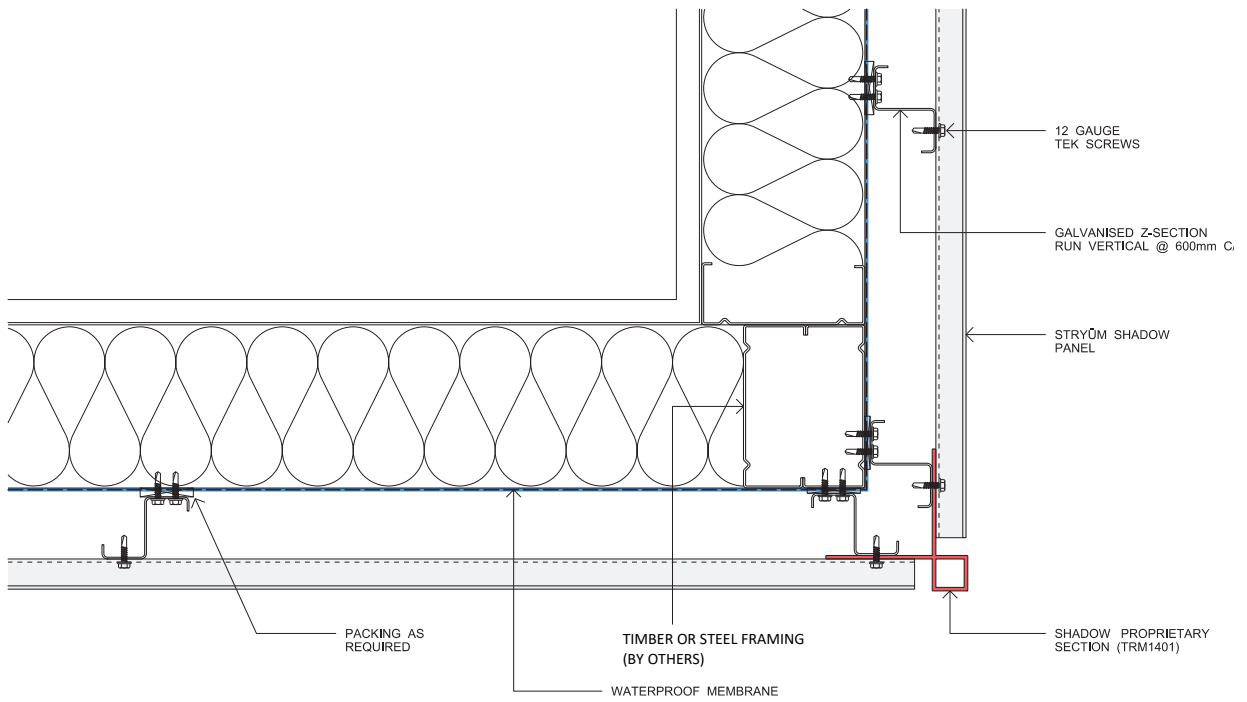


## SHADOW H EXTERNAL CORNER 1

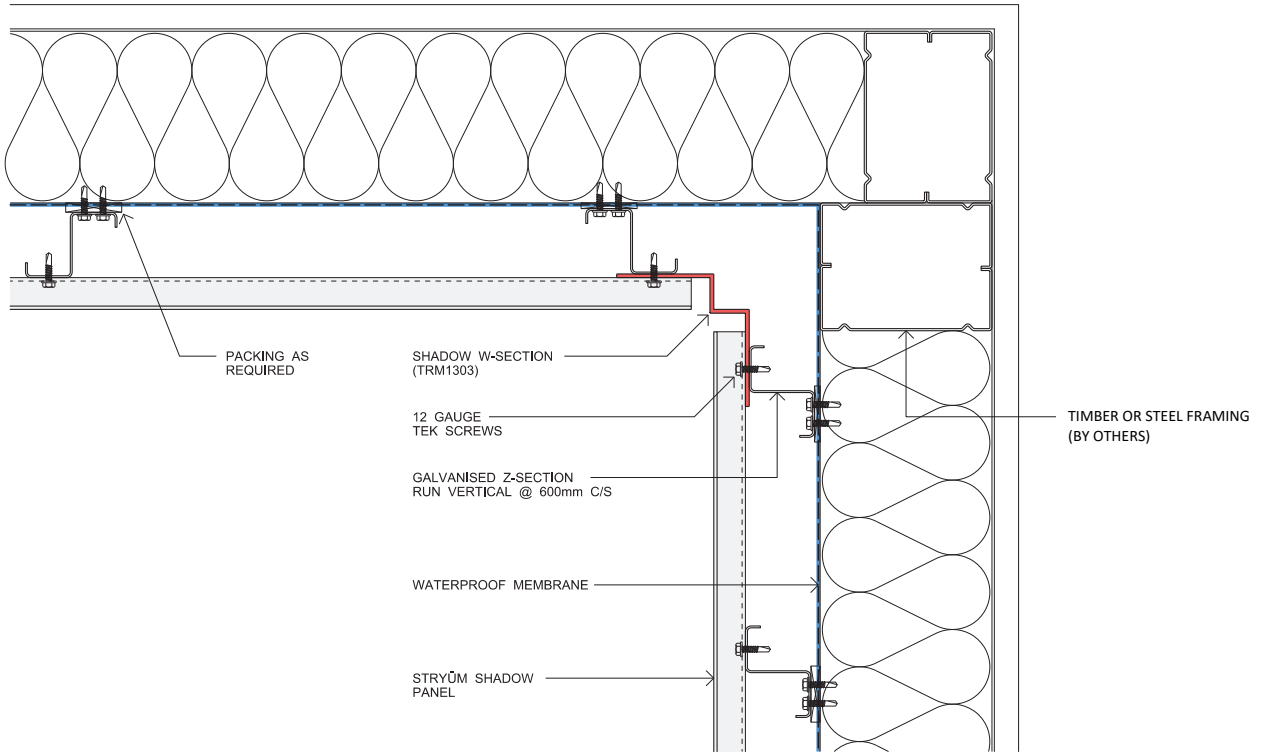




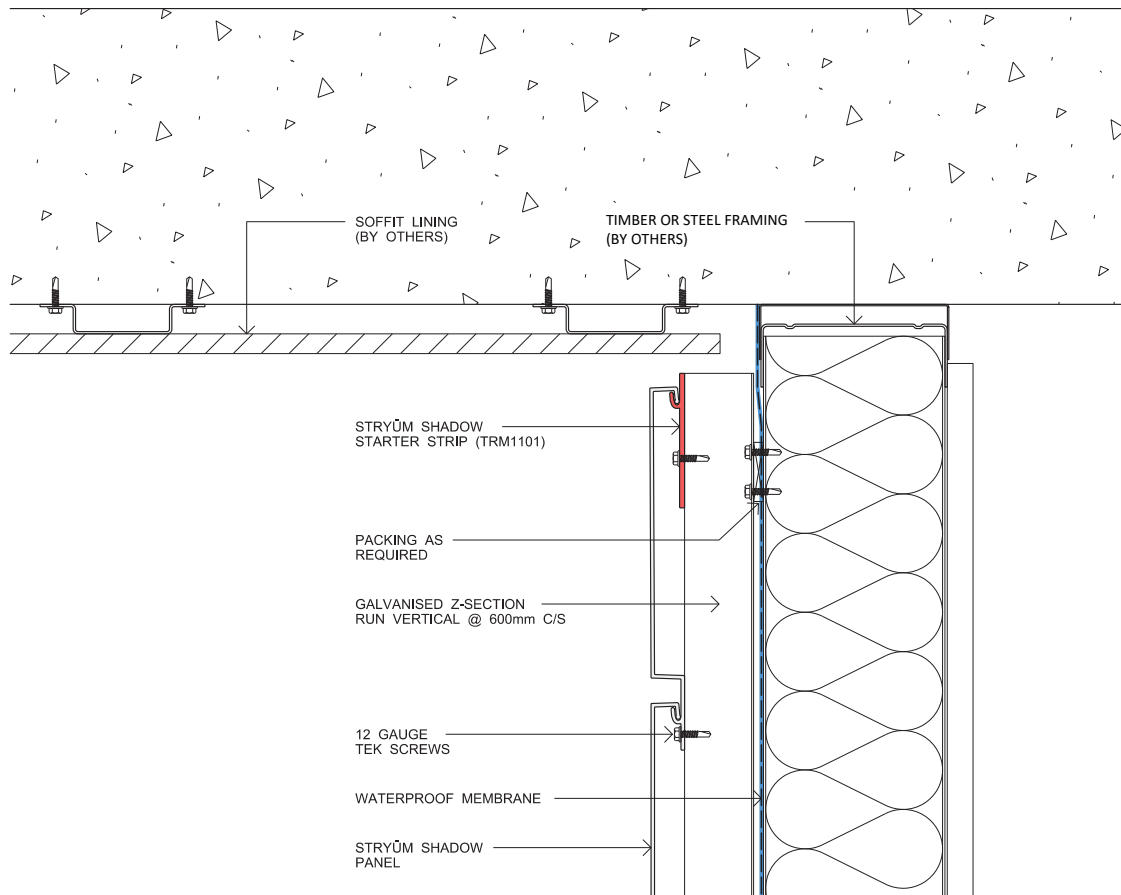
## SHADOW H EXTERNAL CORNER 2



## SHADOW H INTERNAL CORNER

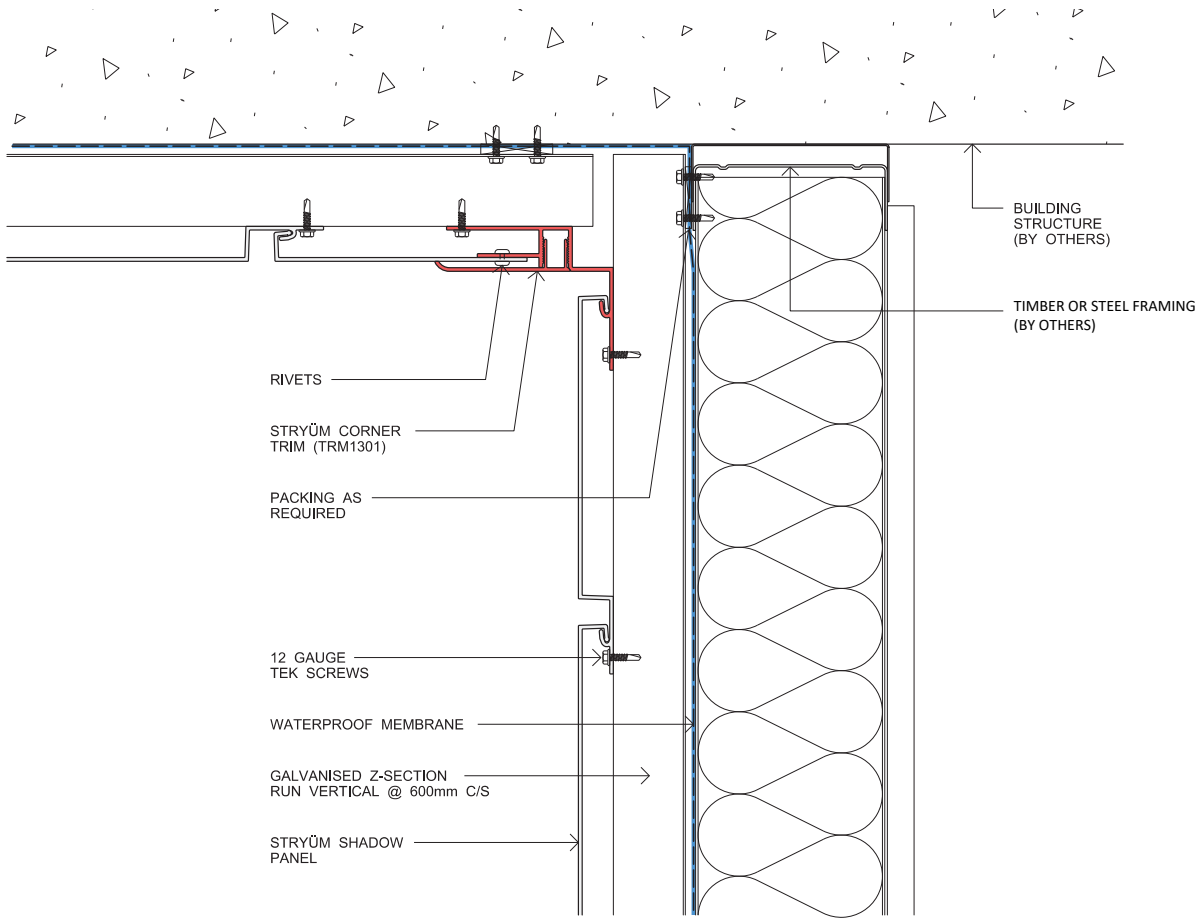


## SHADOW H SOFFIT

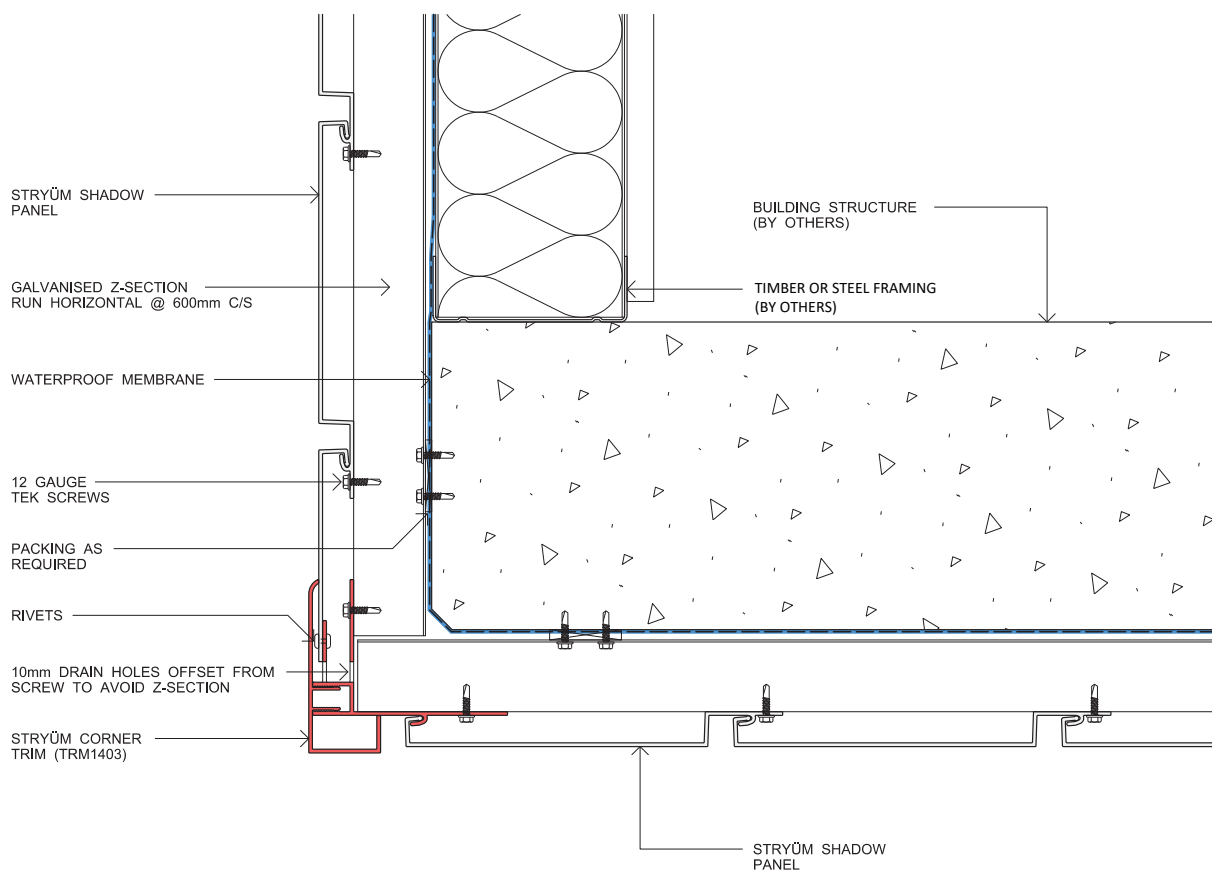




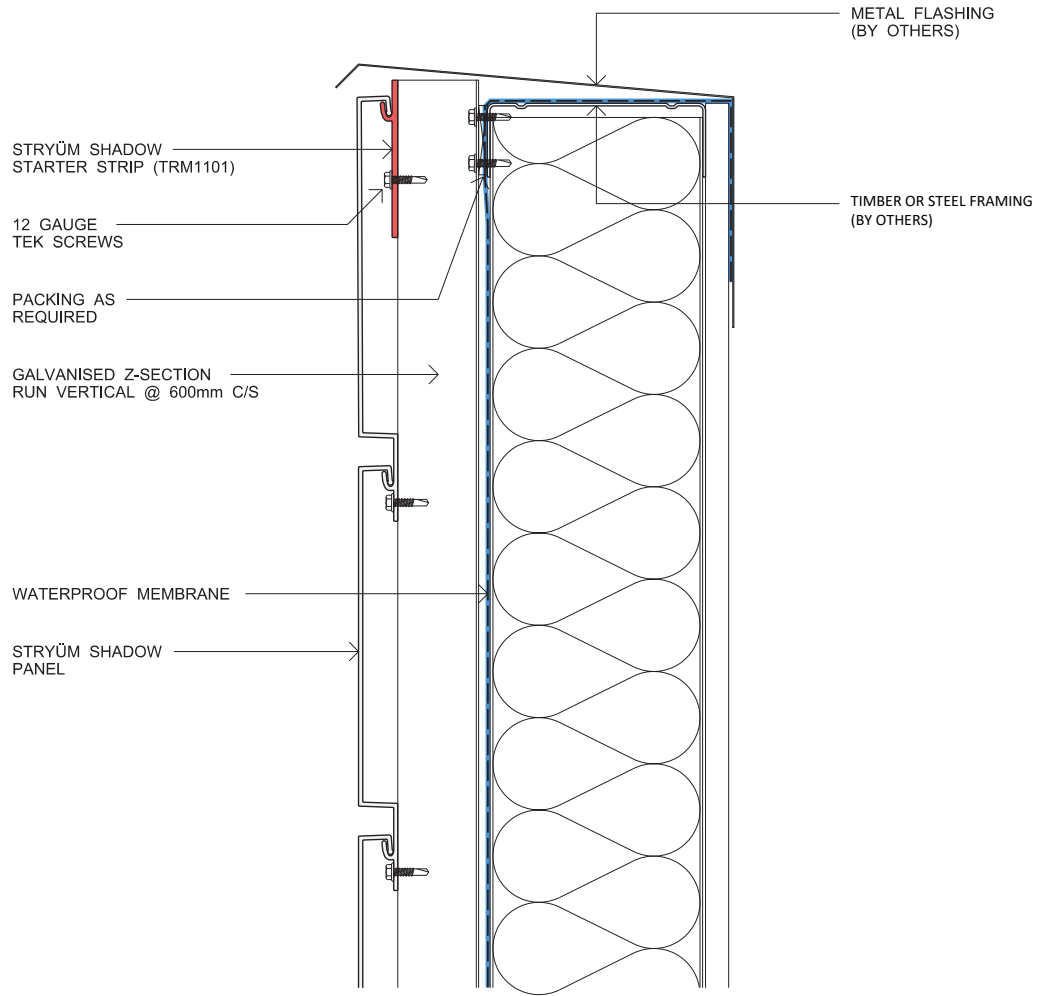
## SHADOW H SOFFIT JUNCTION 1



## SHADOW H SOFFIT JUNCTION 2



## SHADOW H PARAPET



## SHADOW H PANEL CONNECTOR

