



Interlocking • Aluminium • Façade

NEW ZEALAND

INSTALLATION GUIDE SHADOW VERTICAL

WWW.PANELTEC.CO.NZ





8. SHADOW VERTICAL

8.1 INSTALLATION GUIDE

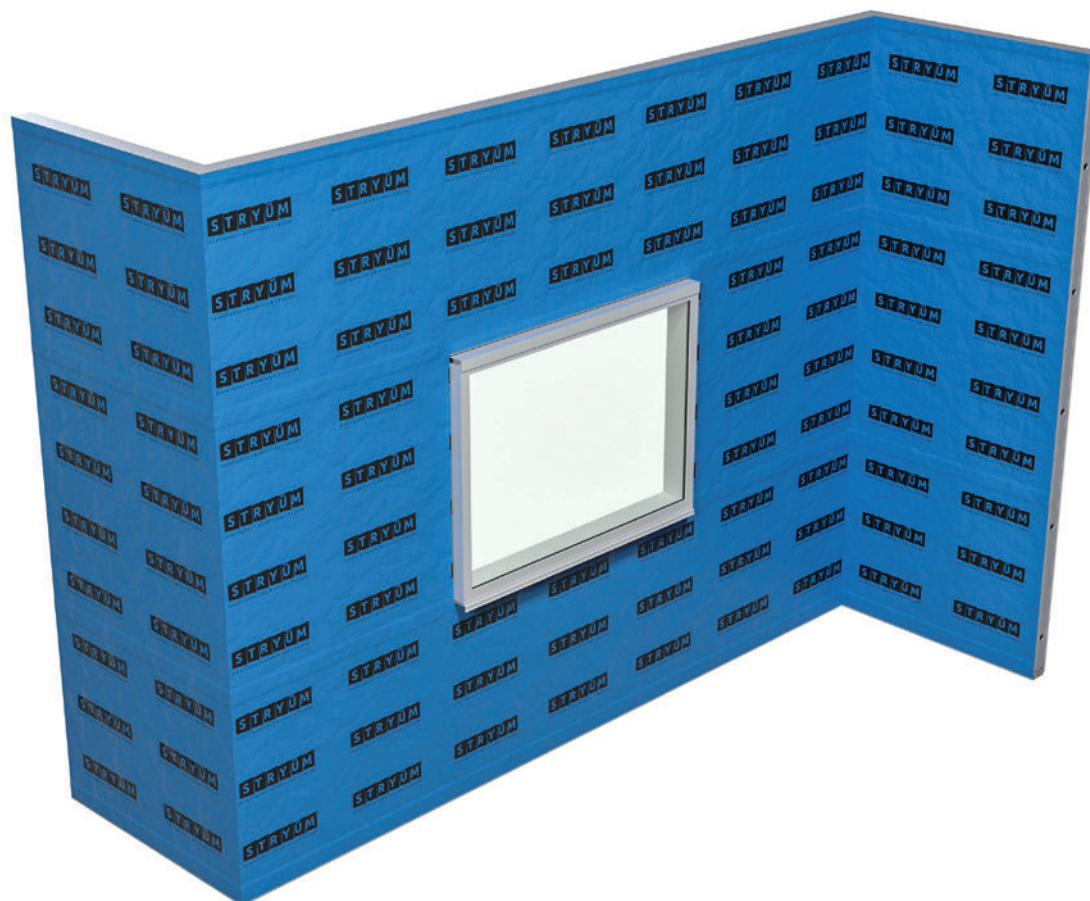
DOCUMENT TRACKING

| VERSION # | DATE | CHANGES |
|-----------|----------|-----------------------------|
| 1.0 | 01/02/22 | Initial Issue - New Zealand |

SHADOW VERTICAL – INSTALLATION GUIDE

Please ensure you review the complete Stryüm Shadow Vertical details on pages 11-30 to ensure you order all the required trims, the following step by step is a guide only.

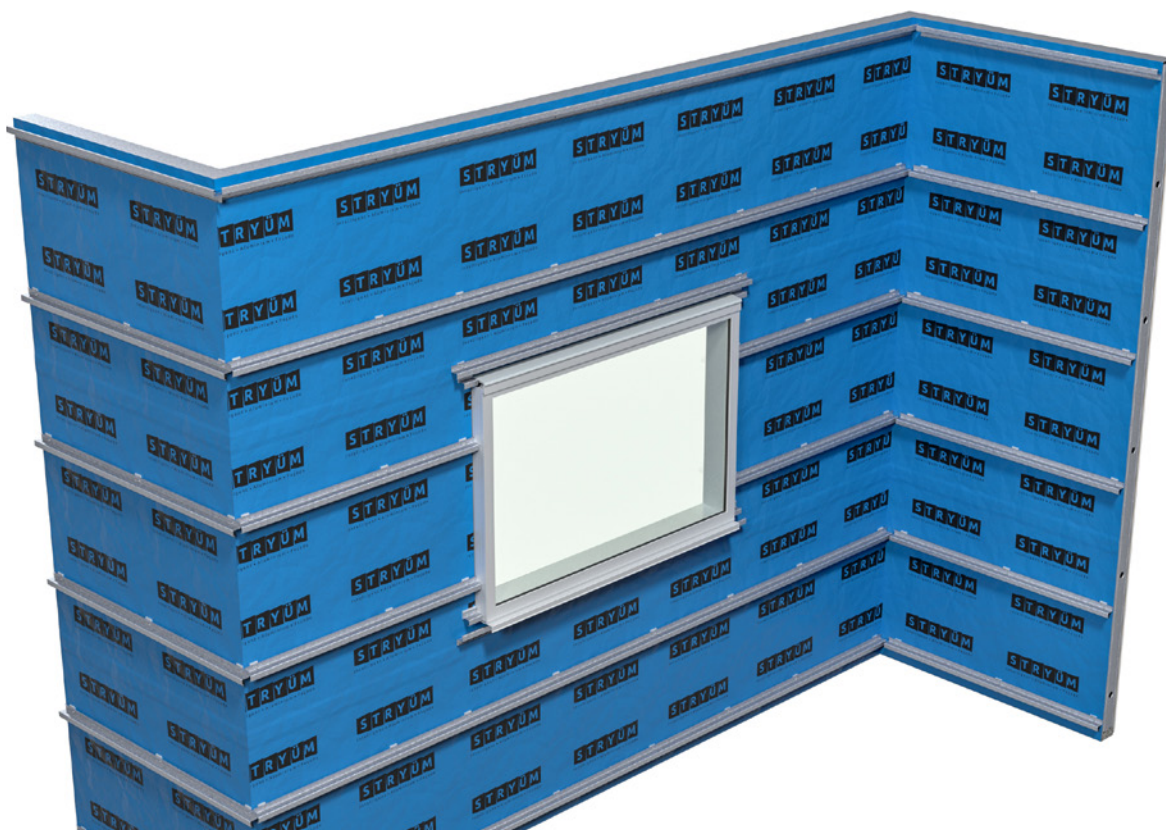
STEP 1 – WATERPROOF MEMBRANE



As Stryüm is a rainscreen façade, a weathertight membrane must be installed over the supporting wall. This membrane needs to meet the project specific requirements for weathertightness and be installed as per manufacturers guidelines. All penetrations through the membrane must be sealed.

| Items On This Page | | | |
|--------------------|--|--------|----------------------|
| Code | Description | Length | Supplied by Paneltec |
| N/A | Waterproof Membrane - Solitex Extasana | N/A | x |
| | | | |

STEP 2 – SUBSTRATE



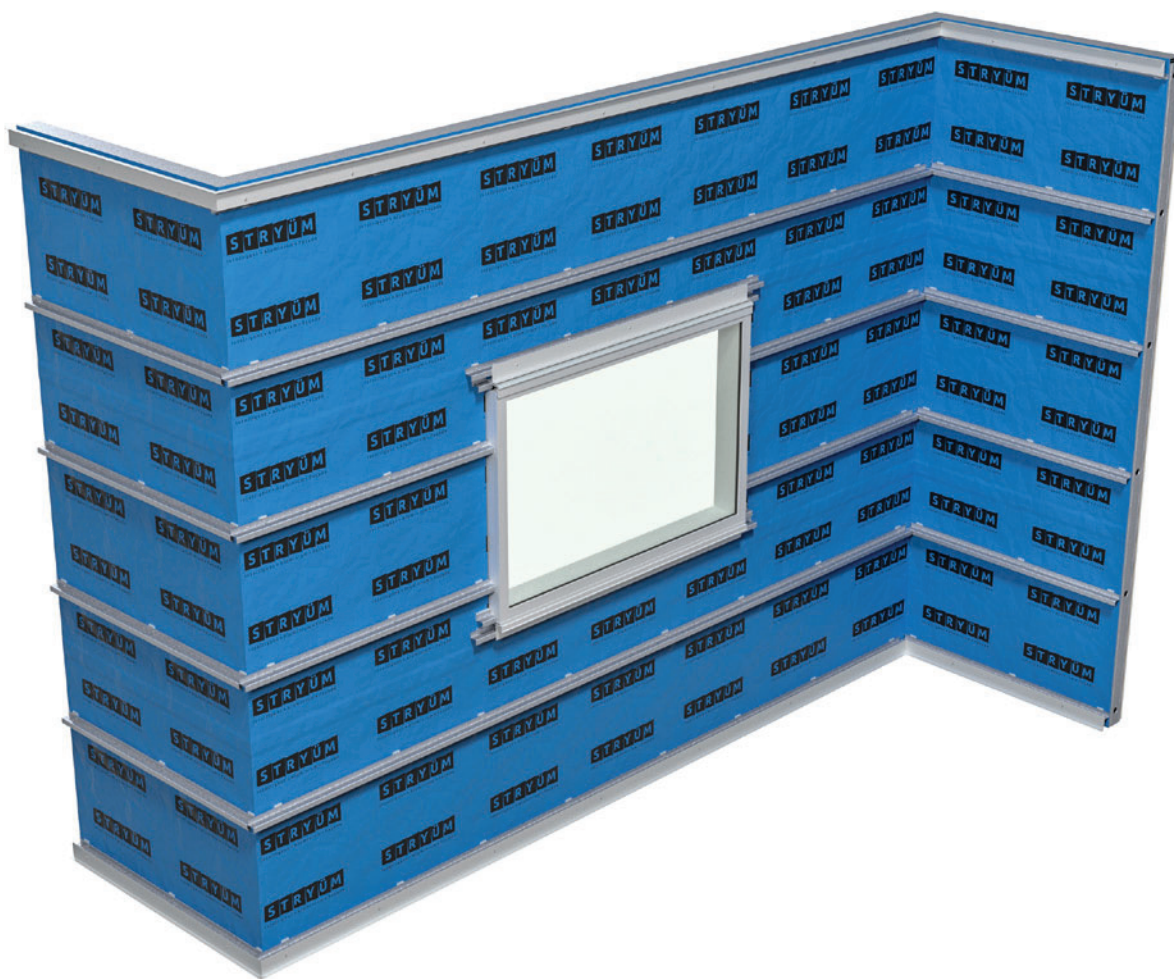
Packers for a plumb substrate and ventilation need to be installed as required prior to the installation of the Stryüm S Section.

Install Stryüm S Section substrate horizontally. The substrate needs to be level to ensure the cladding is flat once installed. Any imperfections in this substrate will be highlighted once the panels are installed.

Stryüm S Sections are installed at maximum 600mm centres. Project specific requirements may dictate shorter span lengths.

| Items On This Page | | | |
|--------------------|-----------------------|--------|----------------------|
| Code | Description | Length | Supplied by Paneltec |
| TRM0901 | 35mm Stryüm S Section | 5.8m | ✓ |

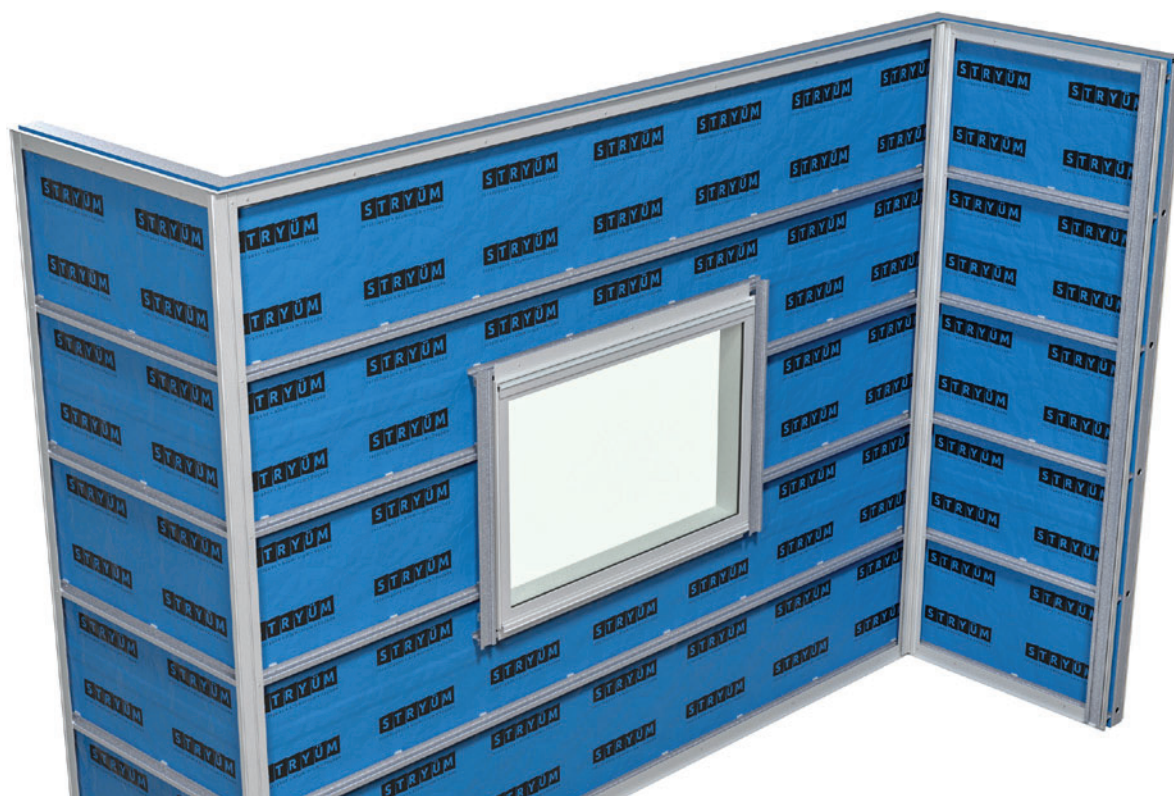
STEP 3 – HORIZONTAL TRIMS



Install the horizontal trims for the cladding, at the top and bottom of the cladding section, above and below any wall penetrations, and at any slab junctions. When installing down to an adjacent flat surface such as a garden bed or pathway, a minimum of 150mm from the ground is recommended to prevent rain splash back dirtying the façade.

| Items On This Page | | | |
|--------------------|-----------------------|--------|----------------------|
| Code | Description | Length | Supplied by Paneltec |
| TRM0503 | 20 x 70 x 1.6 L-Angle | 5.8m | ✓ |

STEP 4 – VERTICAL TRIMS

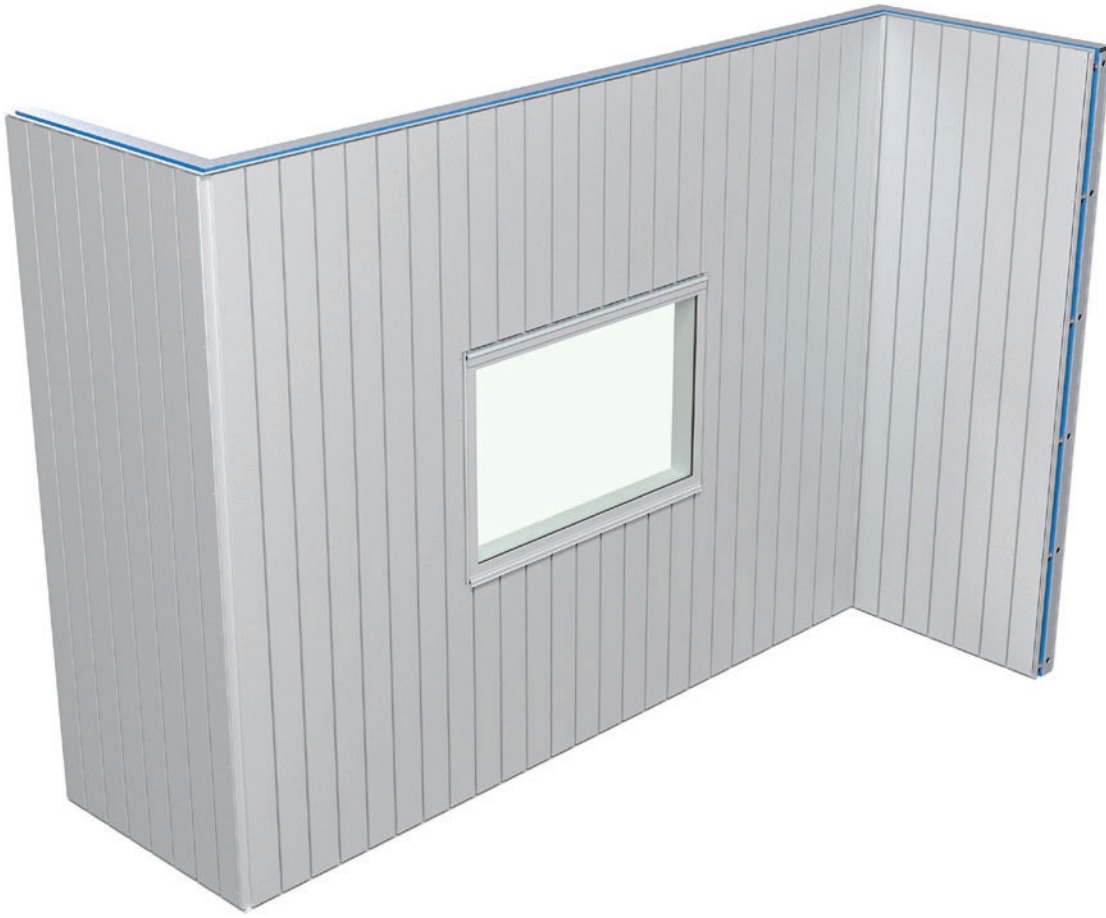


Install the vertical trims for the cladding, at the left and right of the cladding section, at either side of any wall penetrations, and at any corners.

Note: the cladding system is designed to be installed continuously around the building. Pick a cladding direction (Left-Right or Right-Left) and maintain this direction across the whole project. If the cladding is being completed in sections, it is important the trims for either side of a cladding zone are installed prior to the cladding being installed to ensure a clean finish.

| Items On This Page | | | |
|--------------------|---|--------|----------------------|
| Code | Description | Length | Supplied by Paneltec |
| TRM1101 | Shadow Starter Strip | 5.8m | ✓ |
| TRM1403b | Shadow External Shadowline Cover (Female) | 5.8m | ✓ |
| TRM0201b | Stop End (Female) | 5.8m | ✓ |
| TRM1301b | Shadow Internal Shadowline Cover (Female) | 5.8m | ✓ |
| T1550/15 | 15mm Steel Top Hat | 5.8m | ✓ |

STEP 5 – INSTALL CLADDING



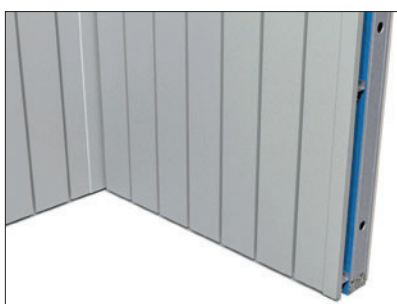
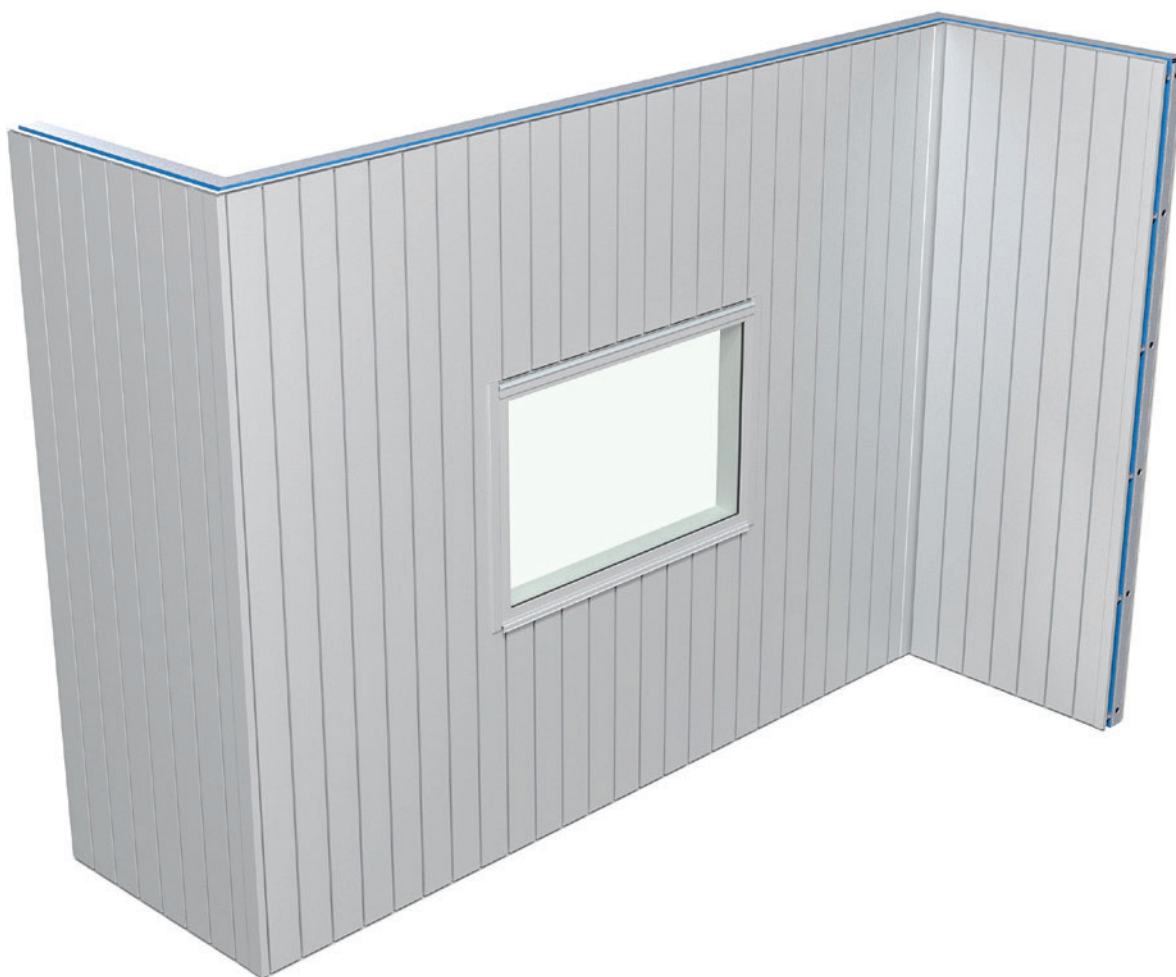
Install the cladding by cutting the panels to length, hooking the panel into the previous panel, and affixing to the S Section. In this diagram the cladding direction chosen is Left-Right.

Due to the rainscreen façade system Stryüm utilizes, a minimum airflow gap of 10mm must be maintained at the top and bottom of the cavity.

Note: there may not be room to install cladding panels around the windows, at internal and external corners and at the end of the cladding zone as per the regular method. These panels will need to be trimmed down the length of the panel and fixed through the face. Use packers as required to bring the face of the panel level with the rest of the façade. These fixing will be concealed with the appropriate cover cap.

| Items On This Page | | | |
|--------------------|-------------|--------|----------------------|
| Code | Description | Length | Supplied by Paneltec |
| SH160 | Shadow 160 | 5.8m | ✓ |
| OR | | | |
| SH200 | Shadow 200 | 5.8m | ✓ |
| OR | | | |
| SH300 | Shadow 300 | 5.8m | ✓ |

STEP 6 – CLIP ON COVER PIECES



Install the cover sections to the two-piece trims to conceal rivets and cut edges. Push firmly into place, a rubber mallet may be used paying careful attention to the finish.

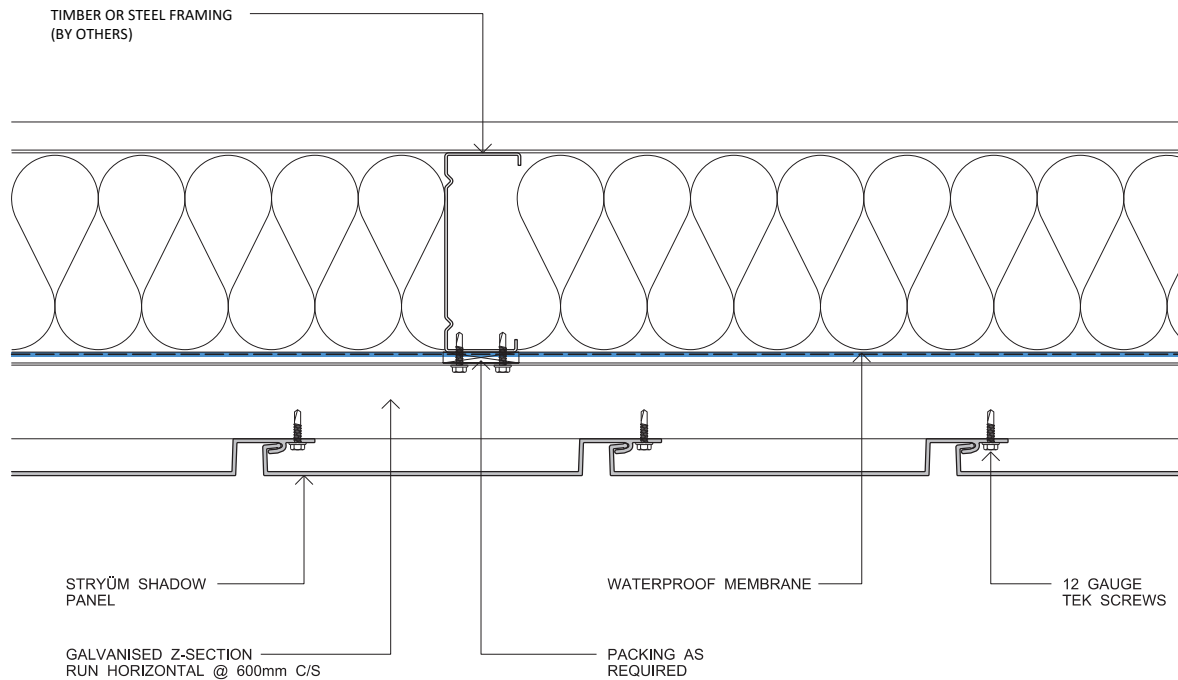
| Items On This Page | | | |
|--------------------|---|--------|----------------------|
| Code | Description | Length | Supplied by Paneltec |
| TRM1403a | Shadow External Shadowline Cover (Male) | 5.8m | ✓ |
| TRM0201a | Stop End (Male) | 5.8m | ✓ |
| TRM1301b | Shadow Intern Shadowline Cover (Male) | 5.8m | ✓ |

8. SHADOW VERTICAL

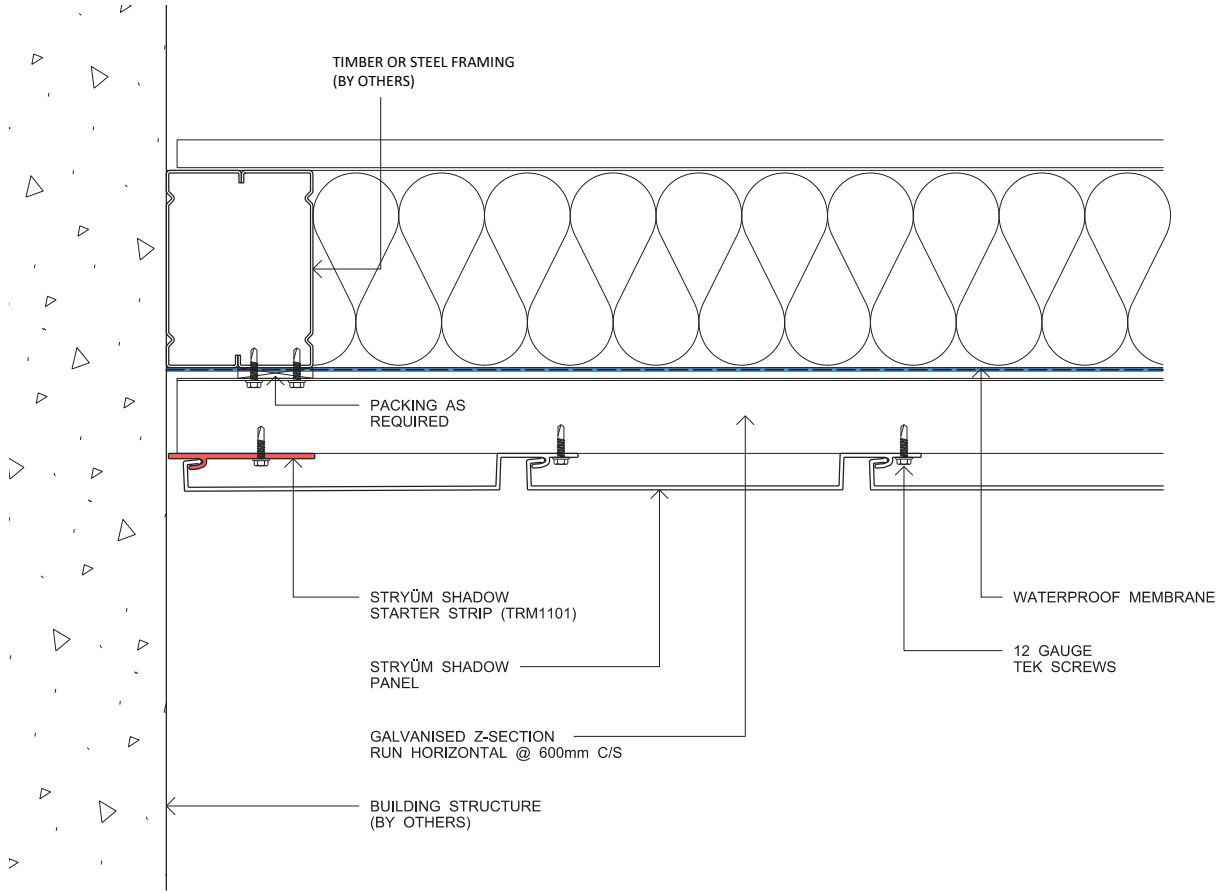
8.2 GENERAL DETAILS

SHADOW VERTICAL – GENERAL DETAILS

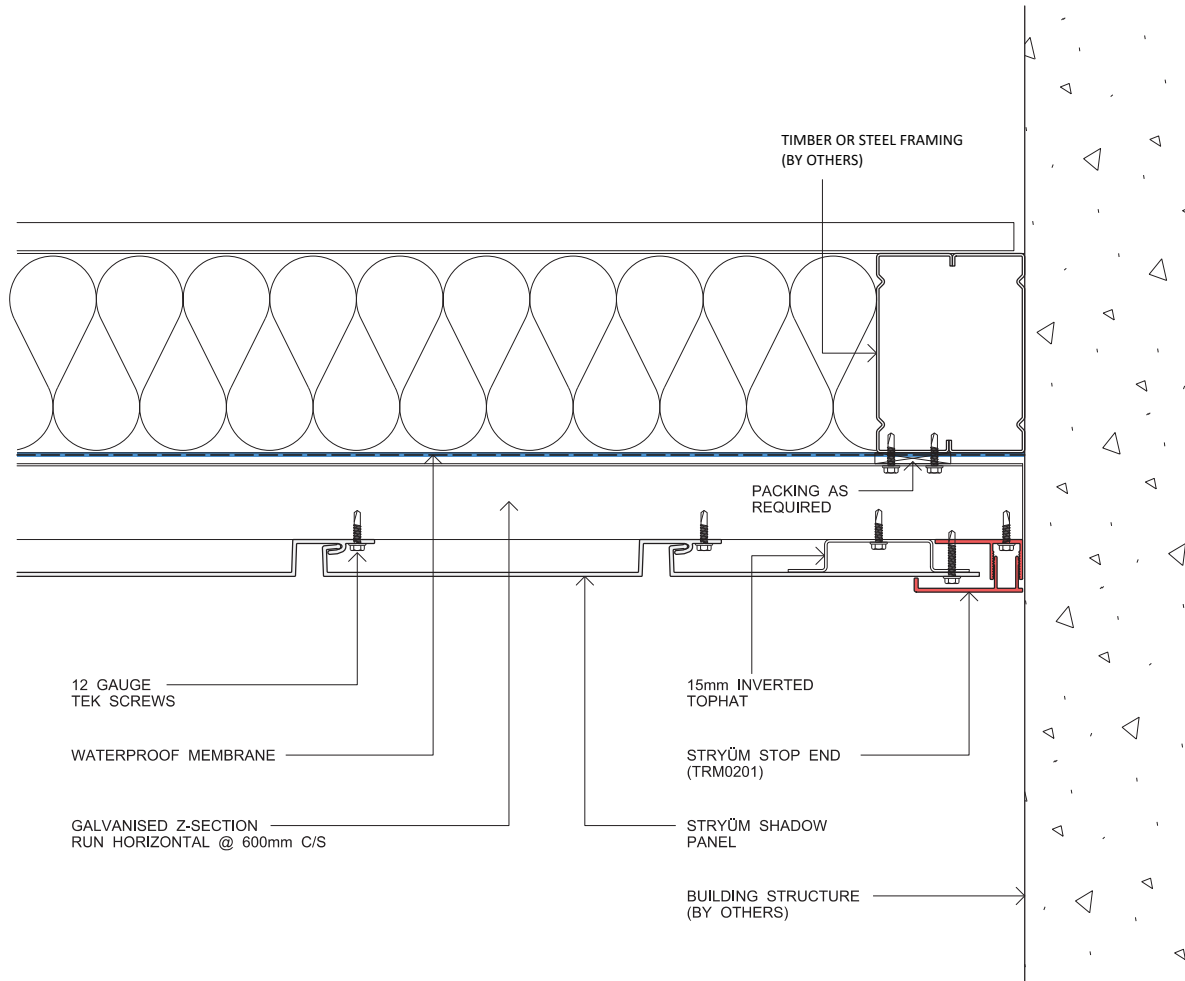
SHADOW V PANEL CONNECTION



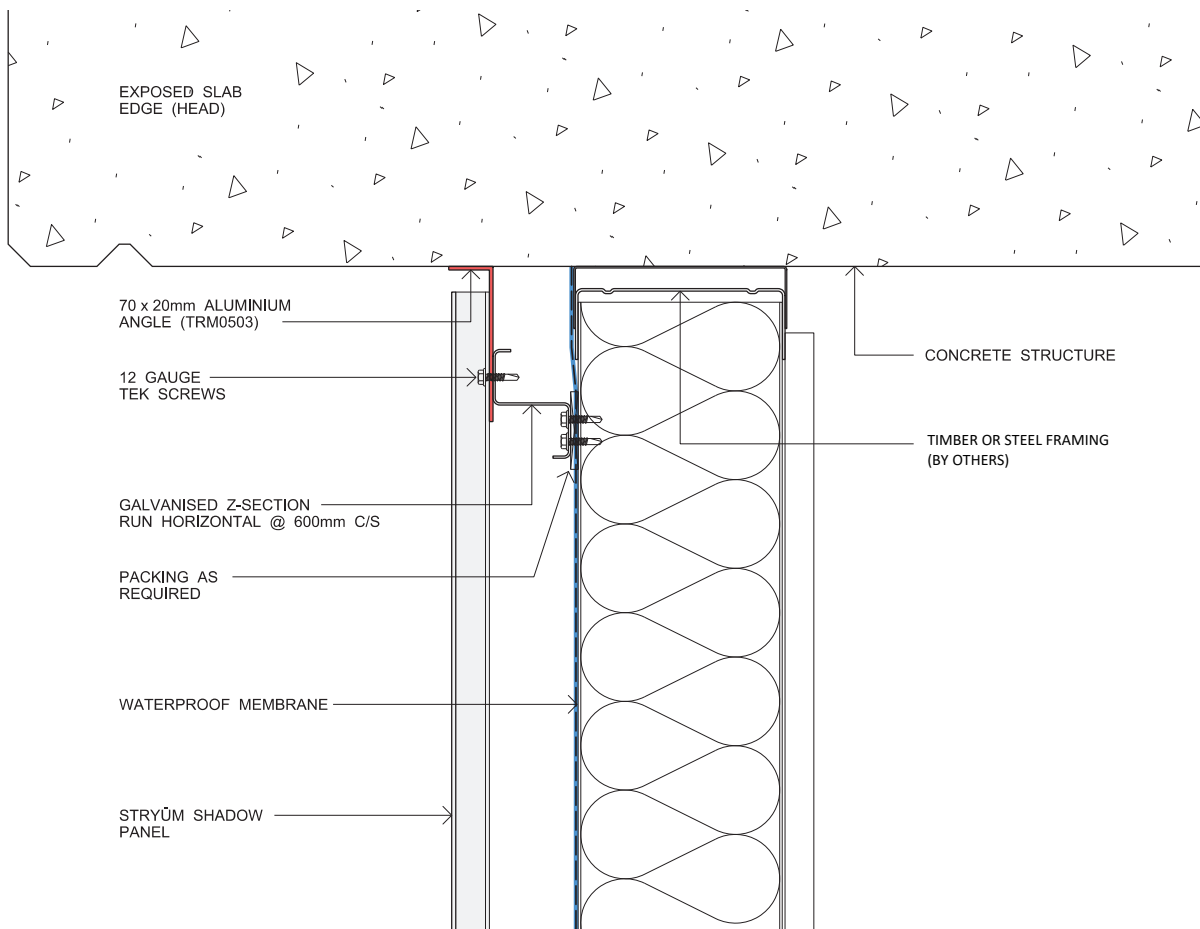
SHADOW V PANEL START



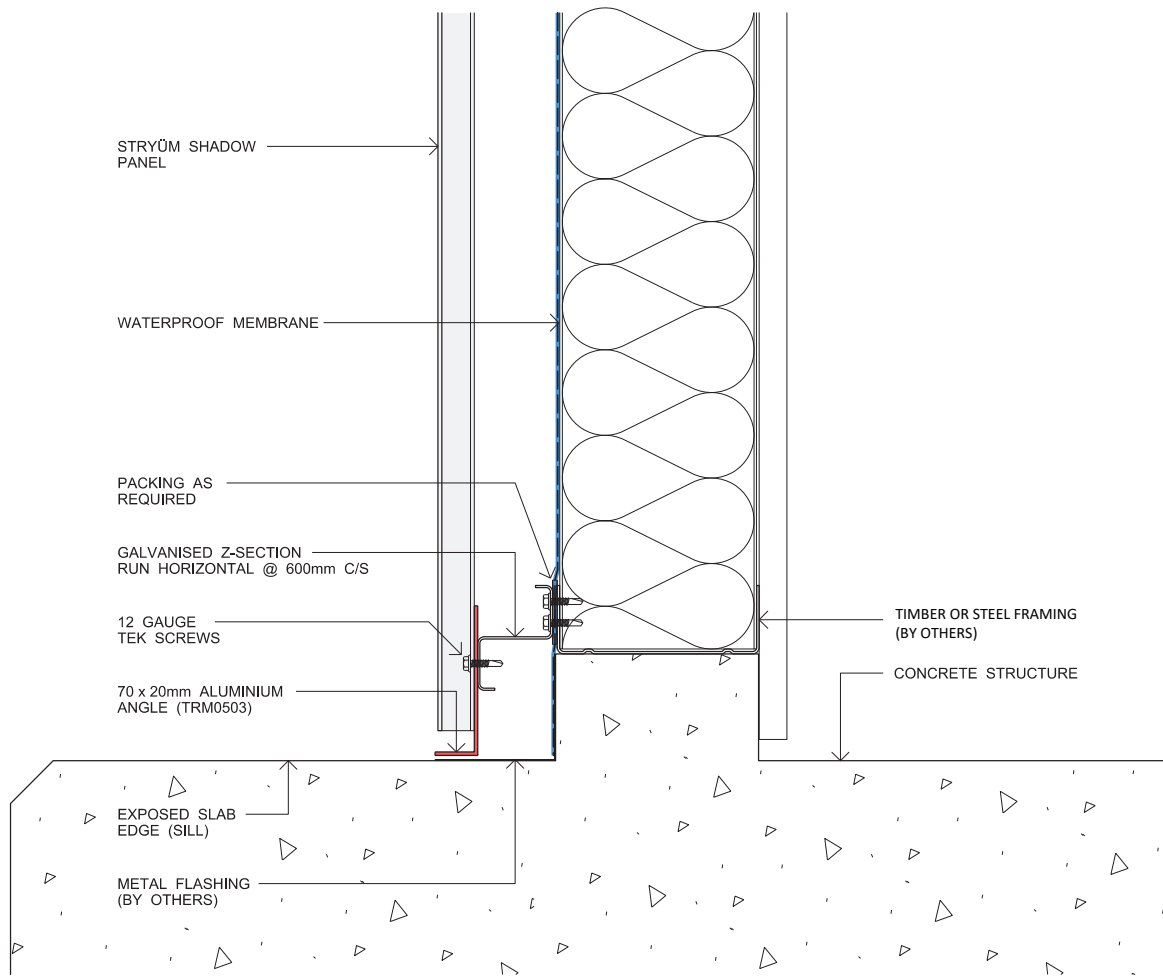
SHADOW V PANEL END



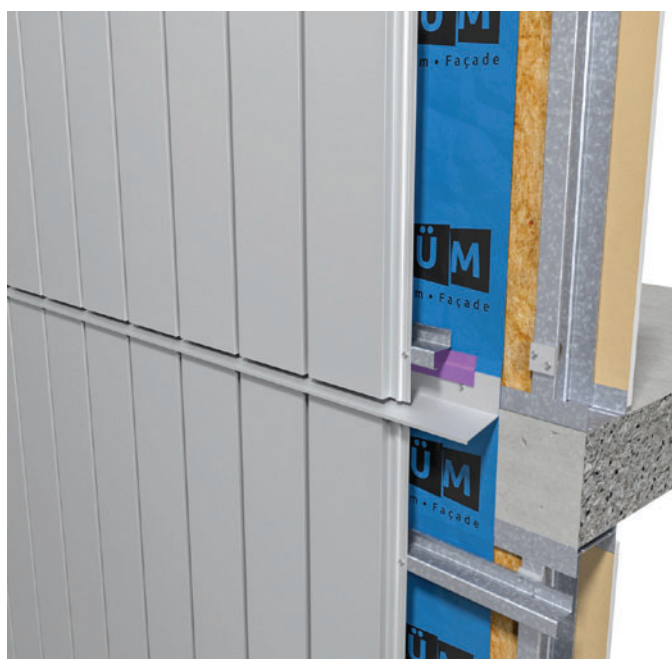
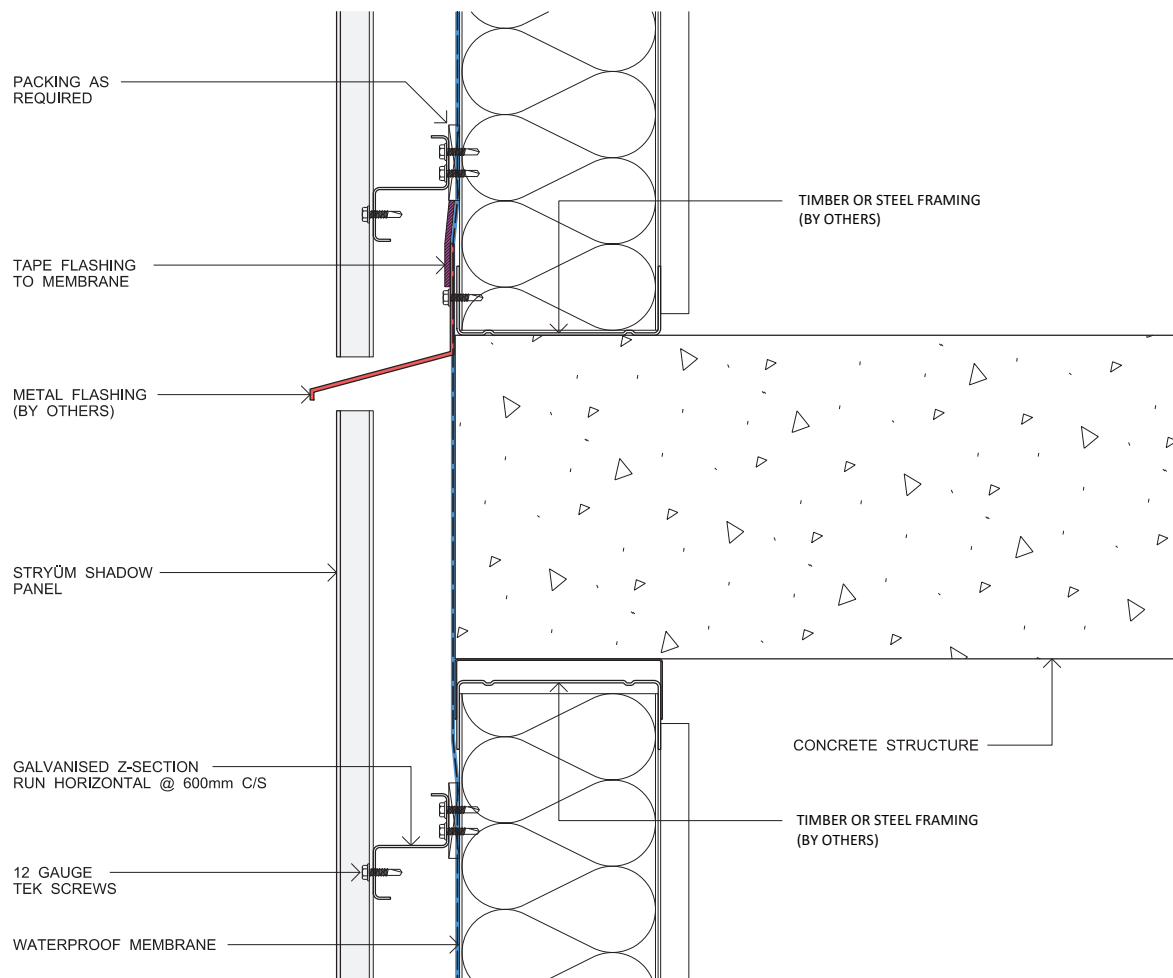
SHADOW V HEAD SLAB JUNCTION



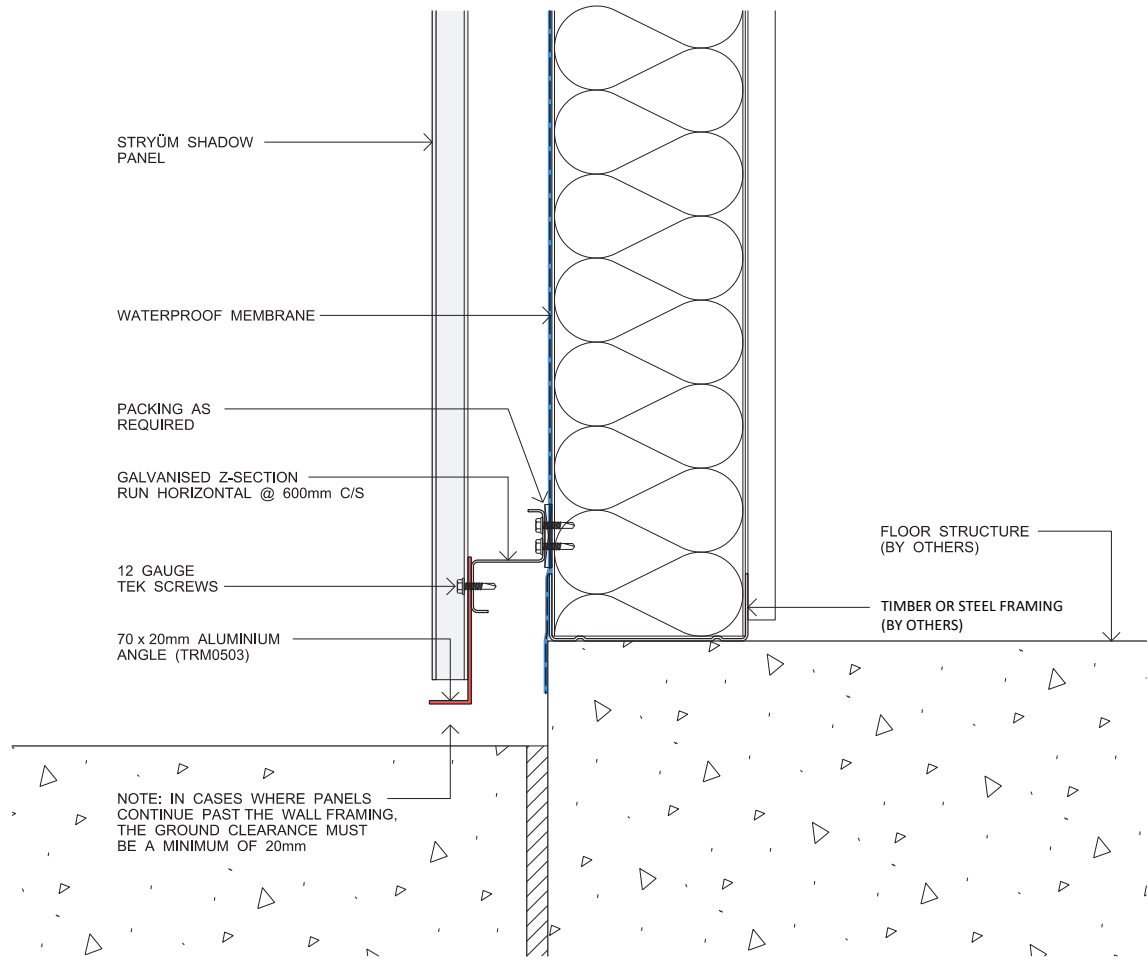
SHADOW V BASE SLAB JUNCTION



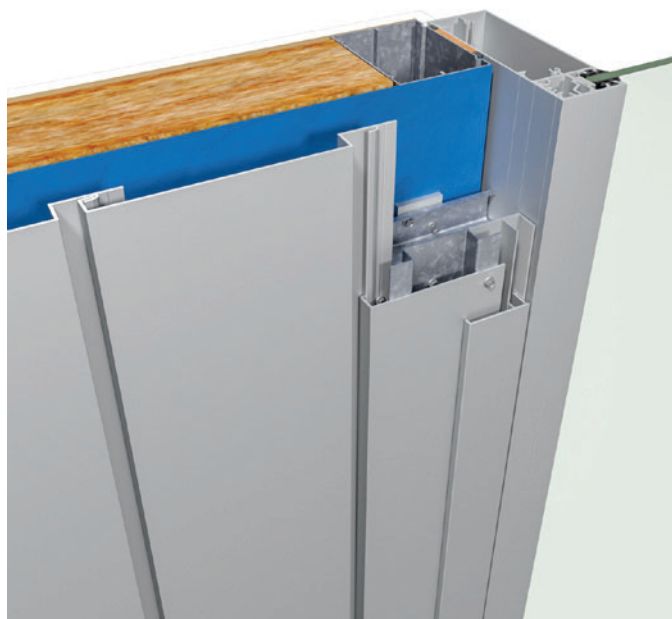
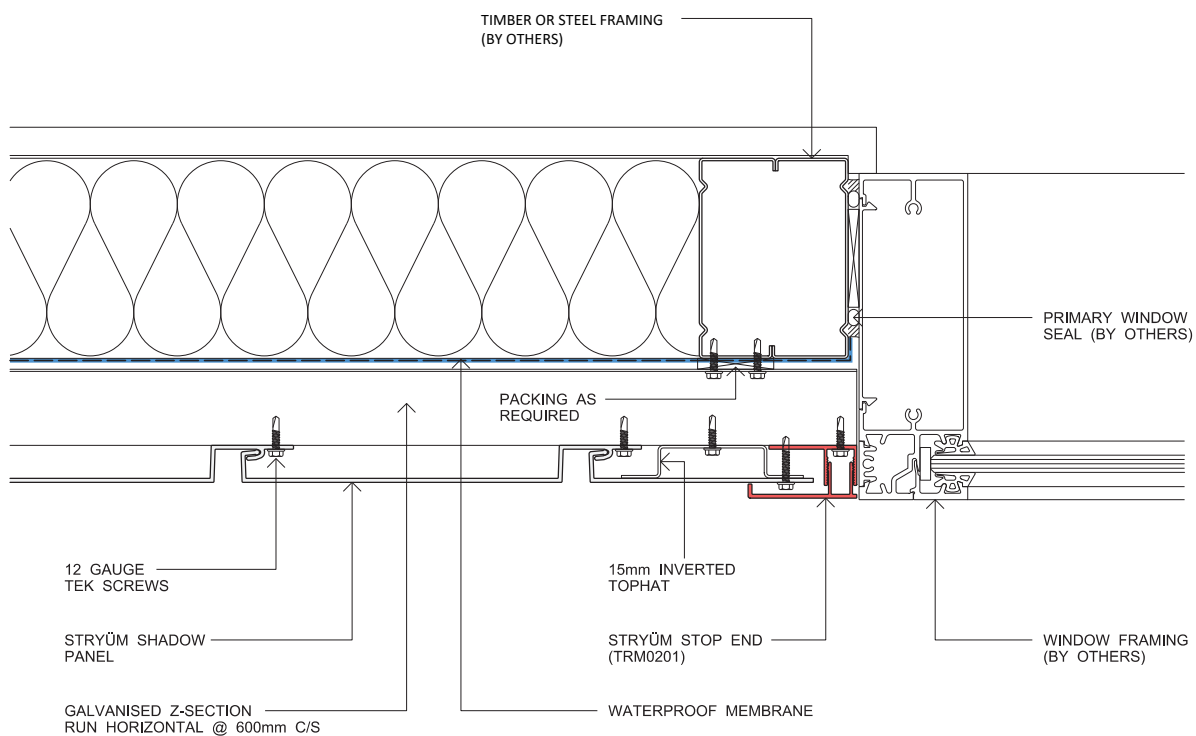
SHADOW V SLAB JUNCTION CONCEALED



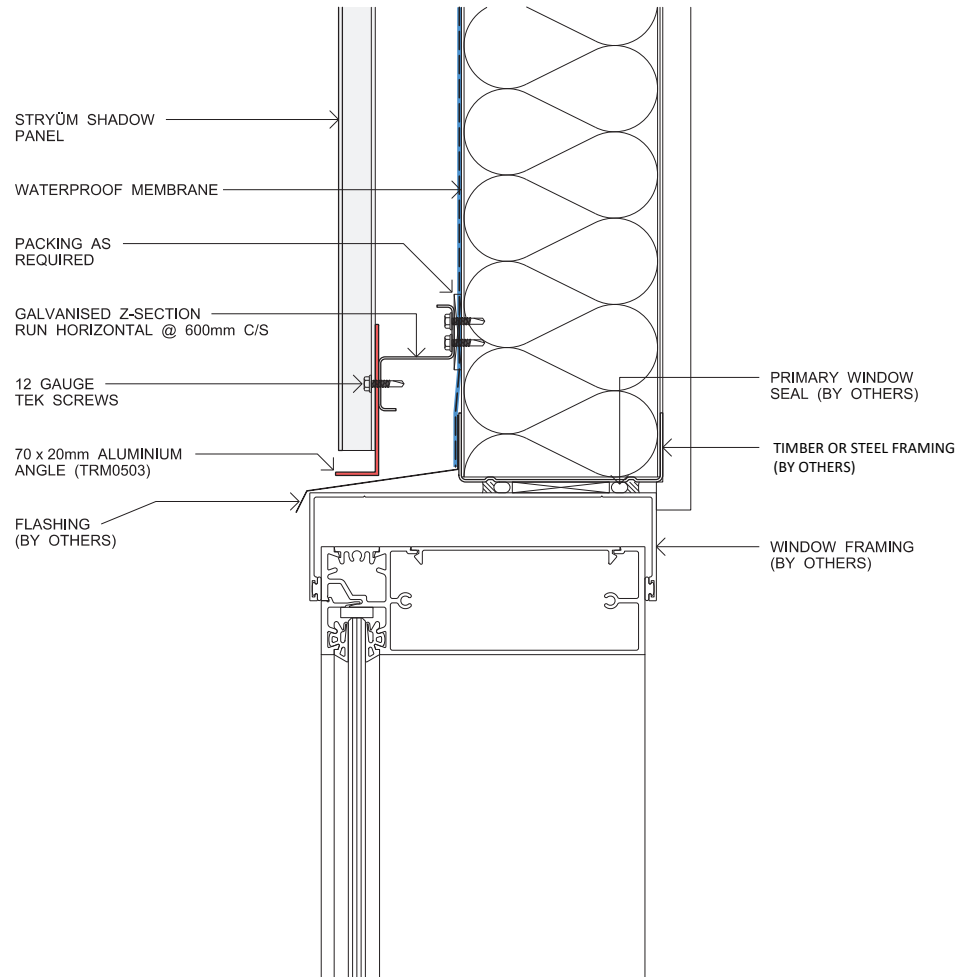
SHADOW V PANEL END FLOOR



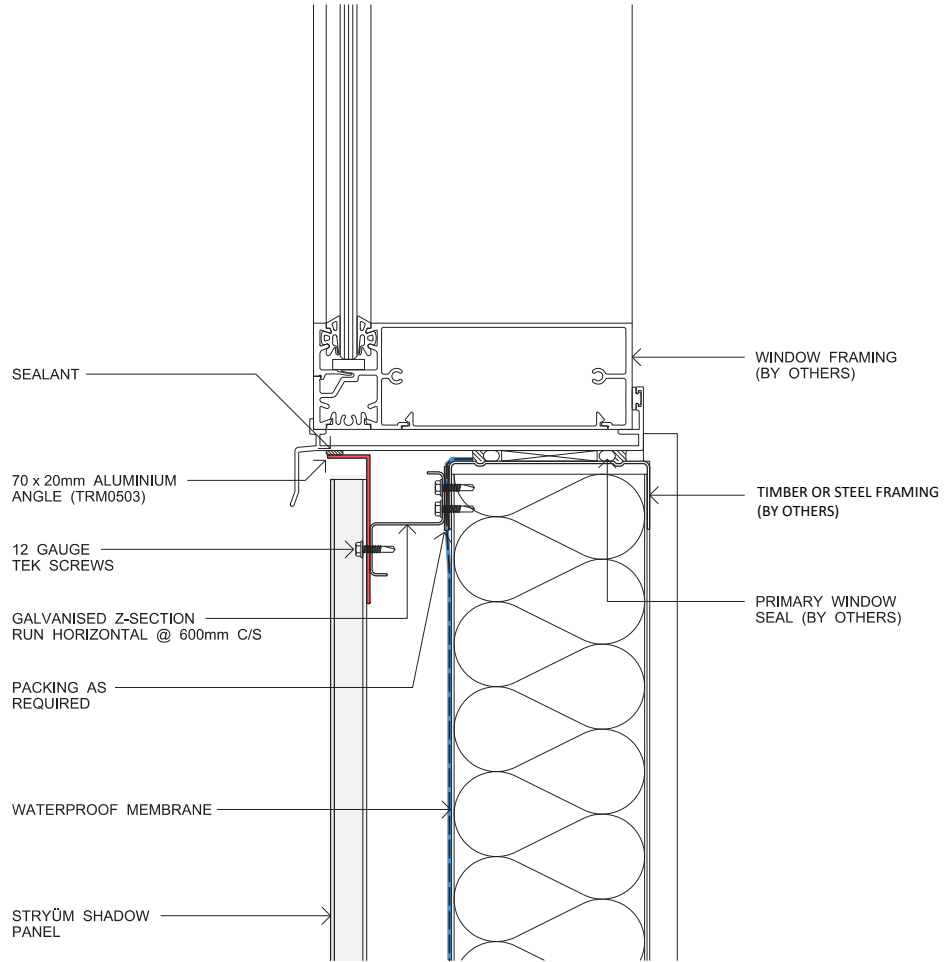
SHADOW V WINDOW JAMB



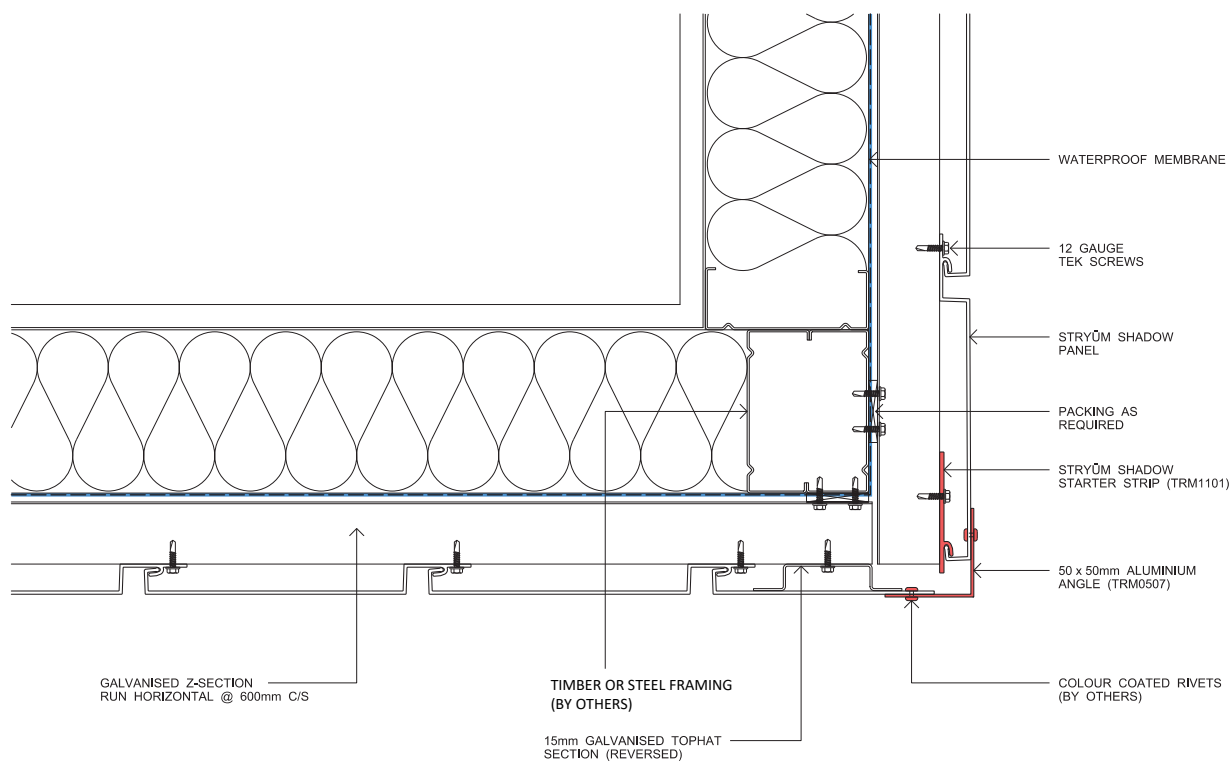
SHADOW V WINDOW HEAD



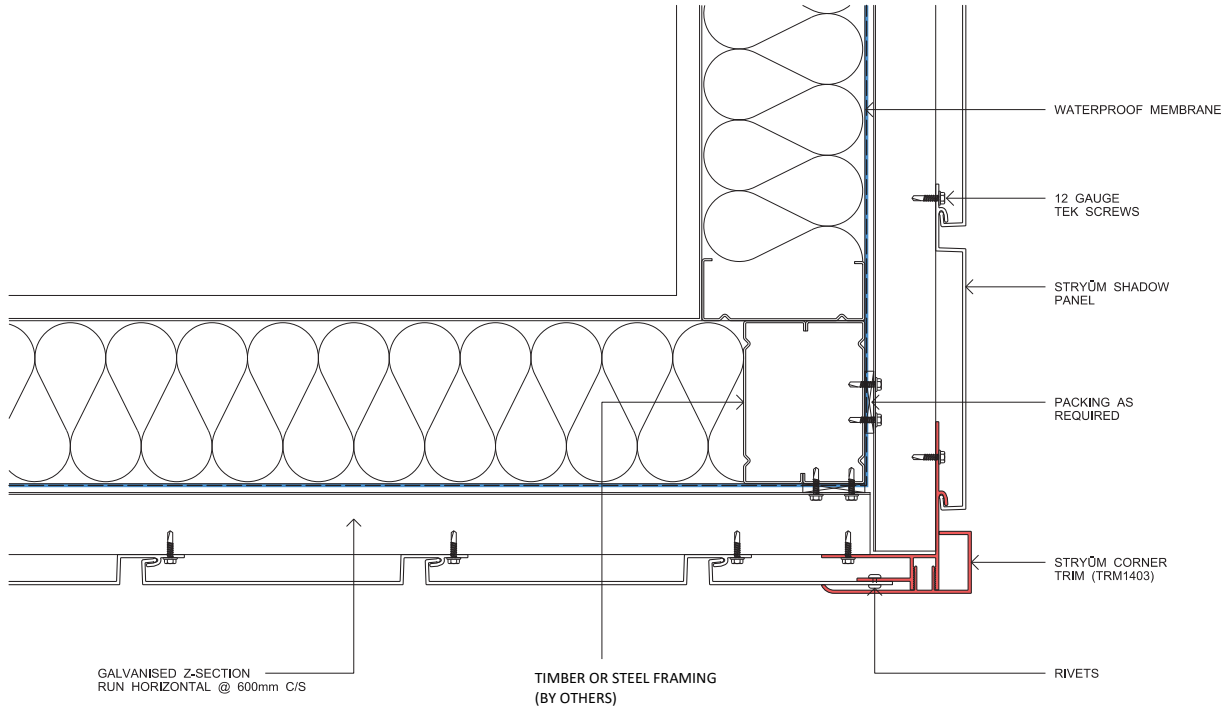
SHADOW V WINDOW SILL



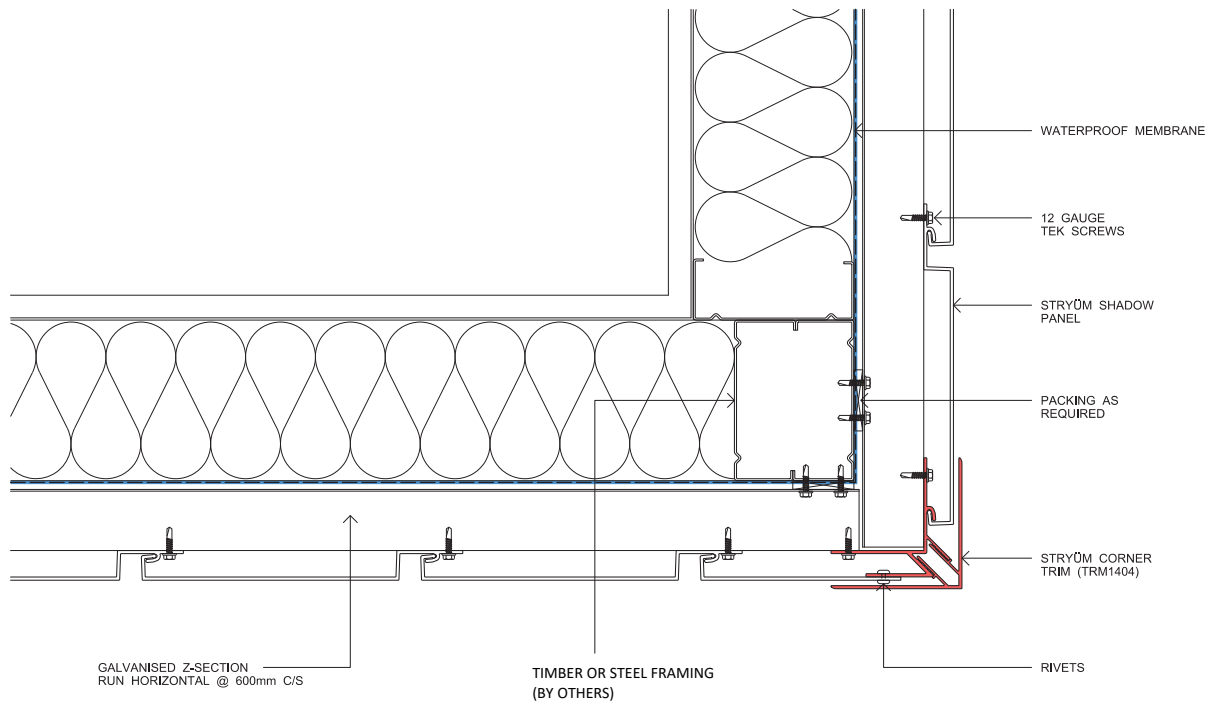
SHADOW V EXTERNAL CORNER 1



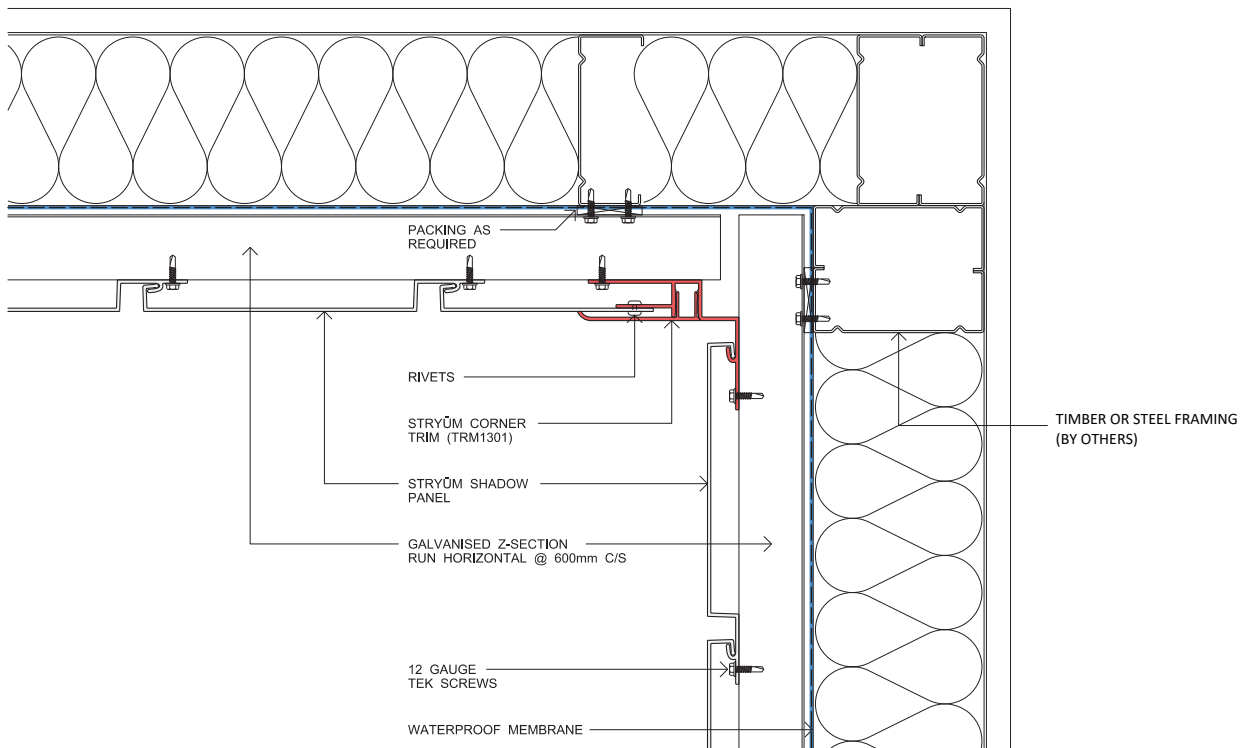
SHADOW V EXTERNAL CORNER 2



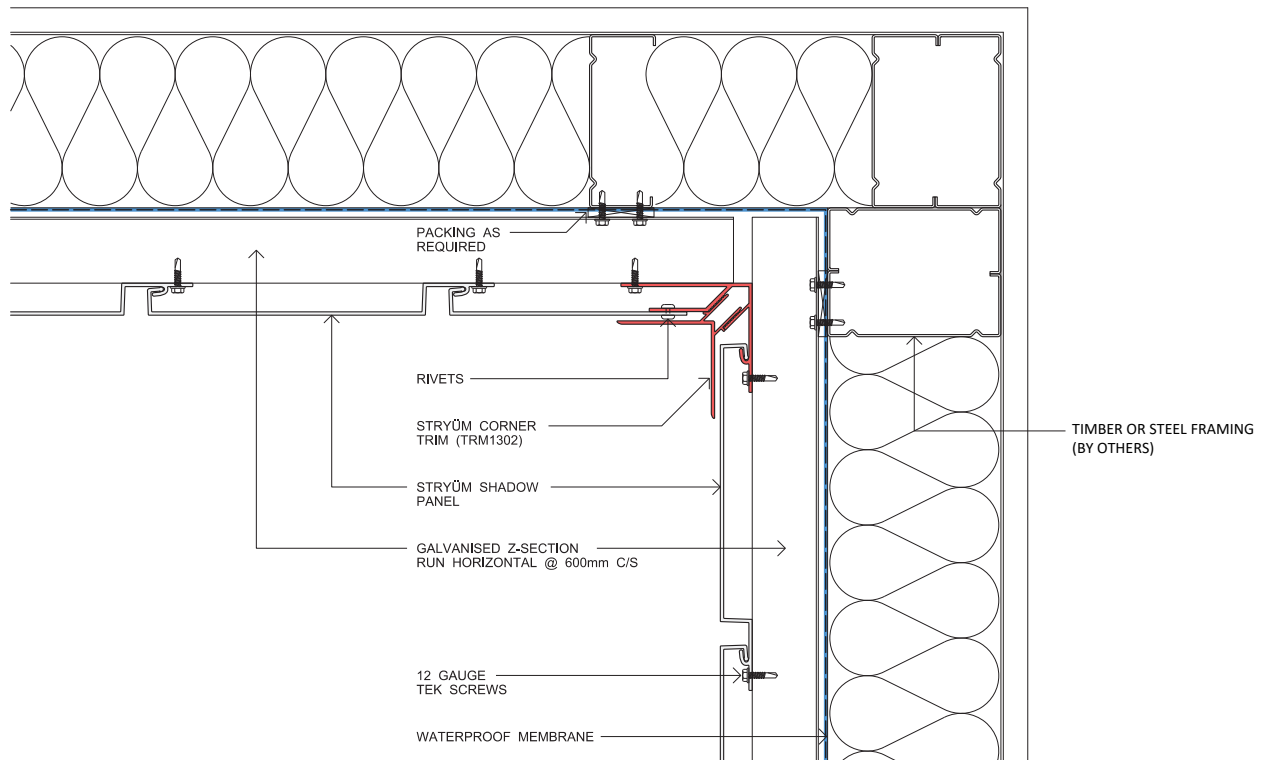
SHADOW V EXTERNAL CORNER 3



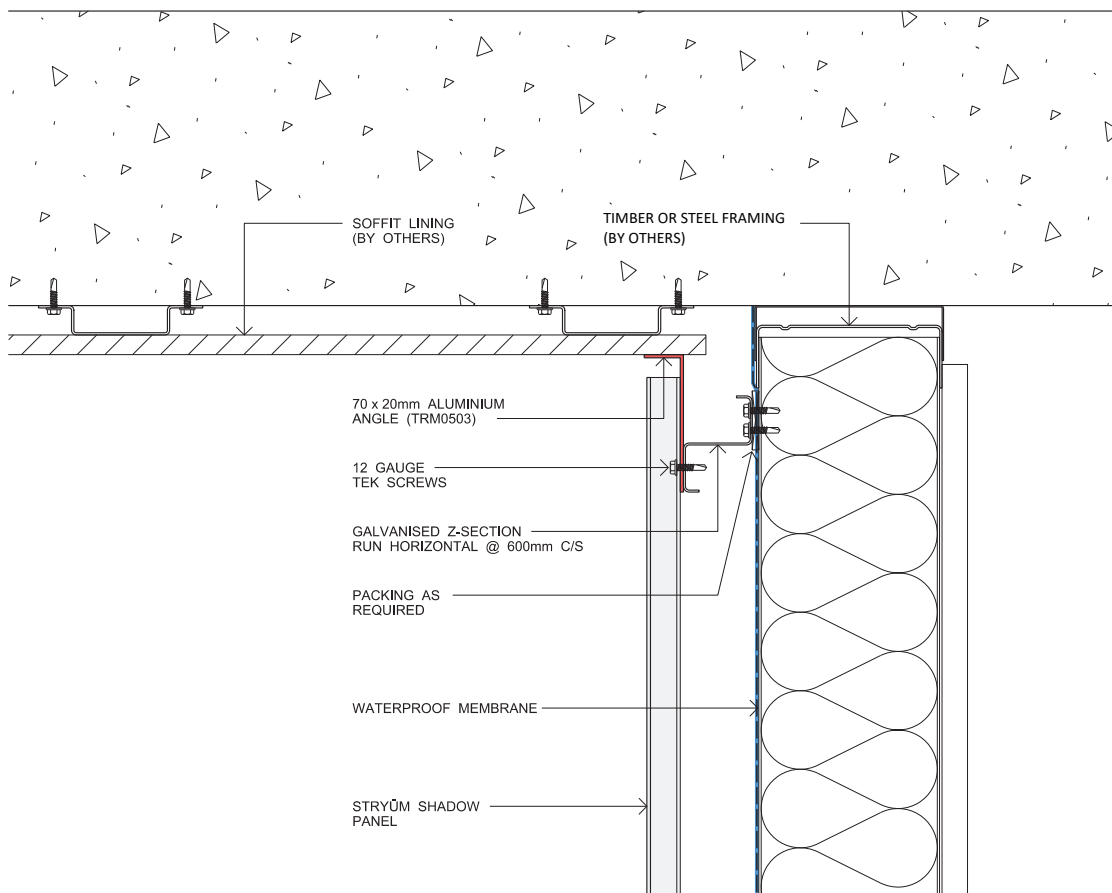
SHADOW V INTERNAL CORNER 1



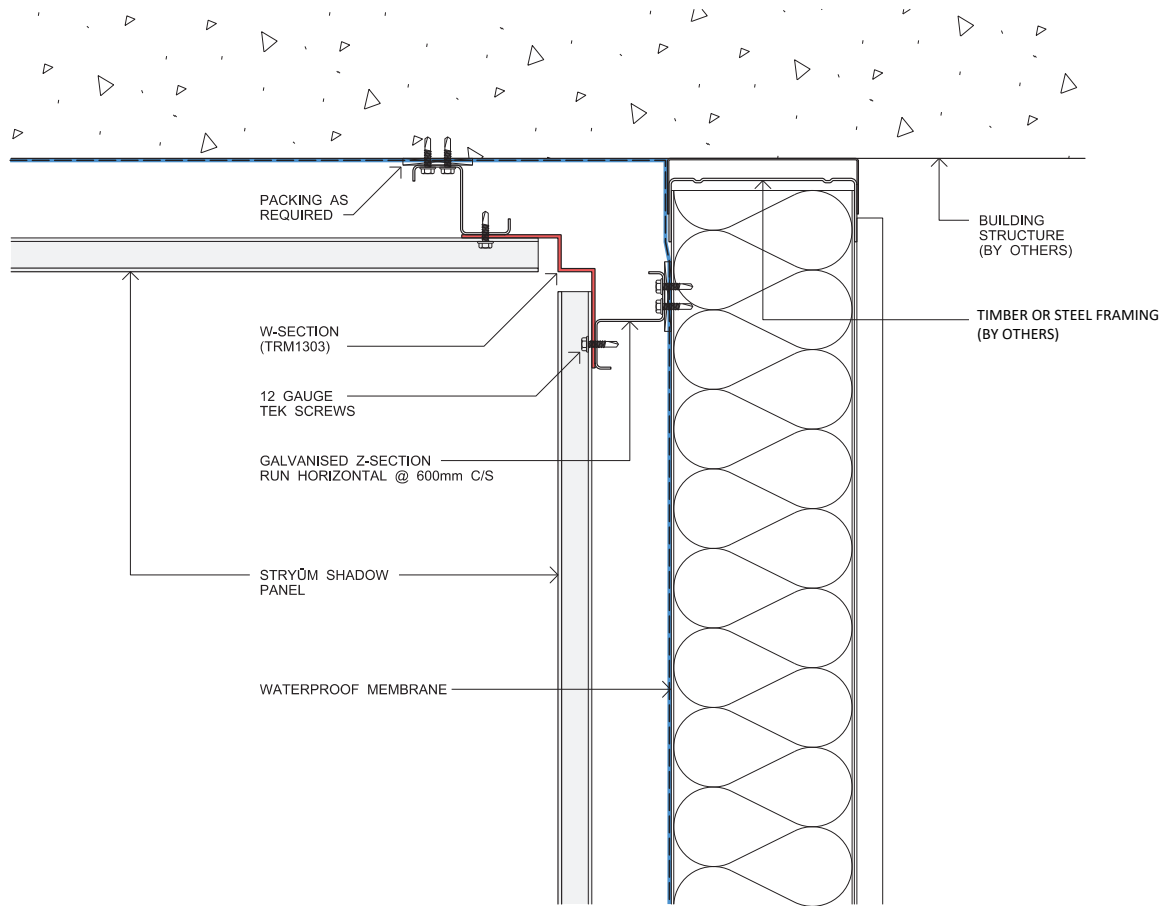
SHADOW V INTERNAL CORNER 2



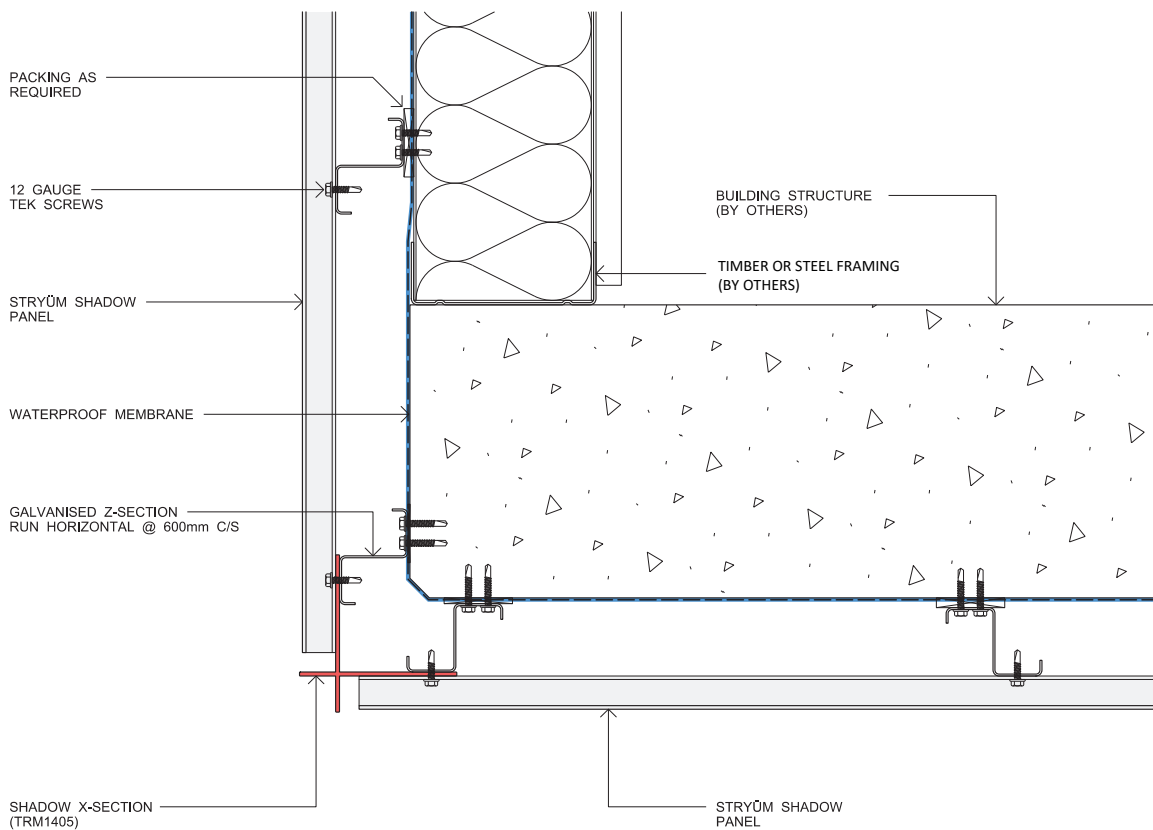
SHADOW V SOFFIT



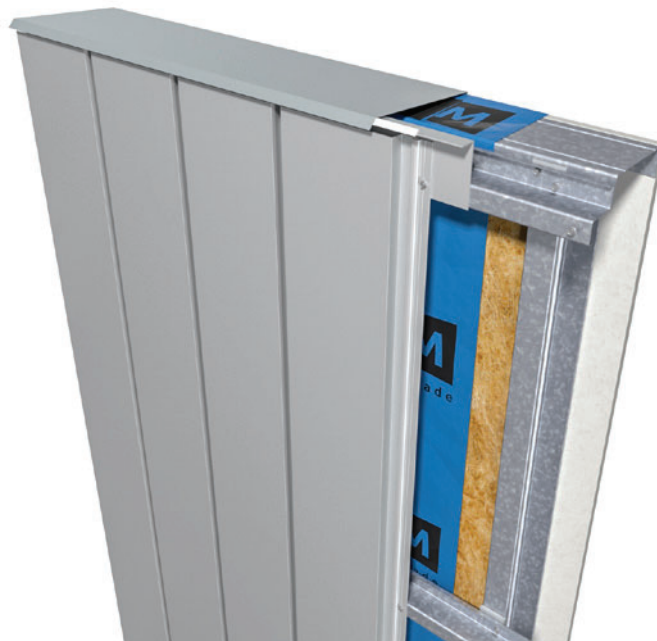
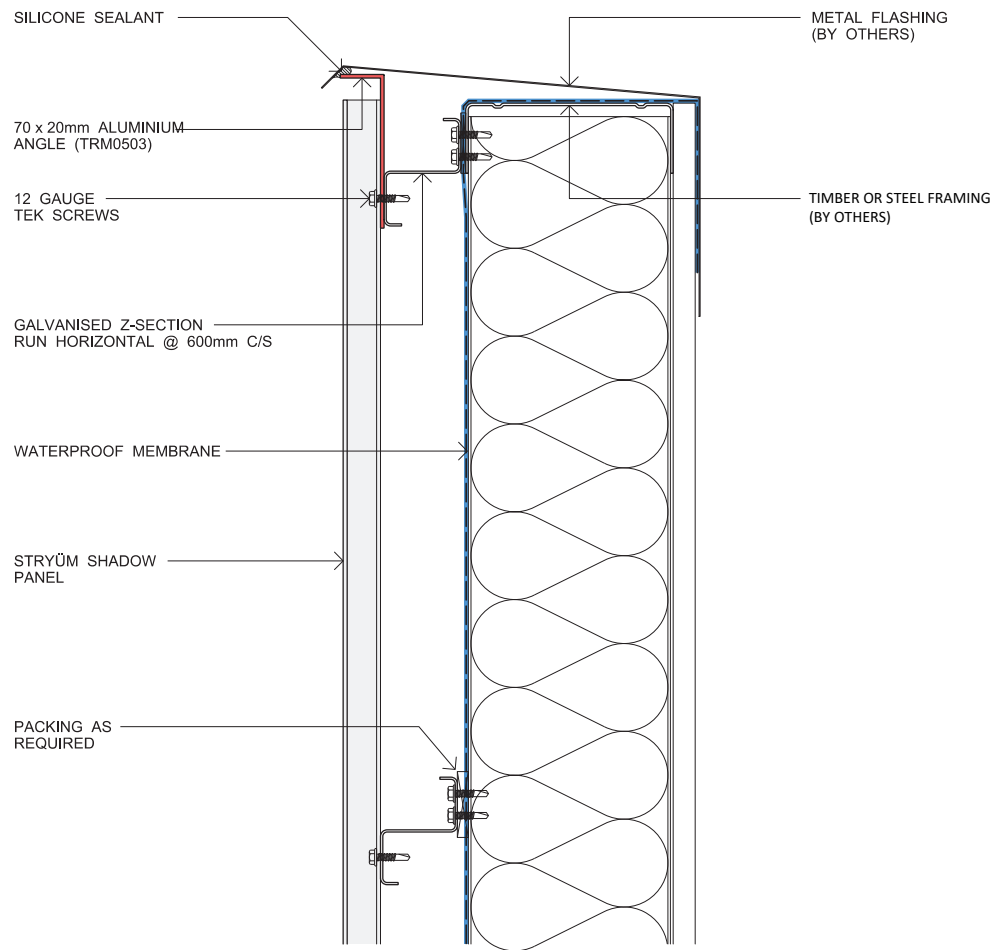
SHADOW V SOFFIT JUNCTION 1



SHADOW V SOFFIT JUNCTION 2



SHADOW V PARAPET



SHADOW V PANEL CONNECTOR

