



Interlocking • Aluminium • Façade

NEW ZEALAND

INSTALLATION GUIDE STEP HORIZONTAL

WWW.PANELTEC.CO.NZ





11. STEP HORIZONTAL

11.1 INSTALLATION GUIDE

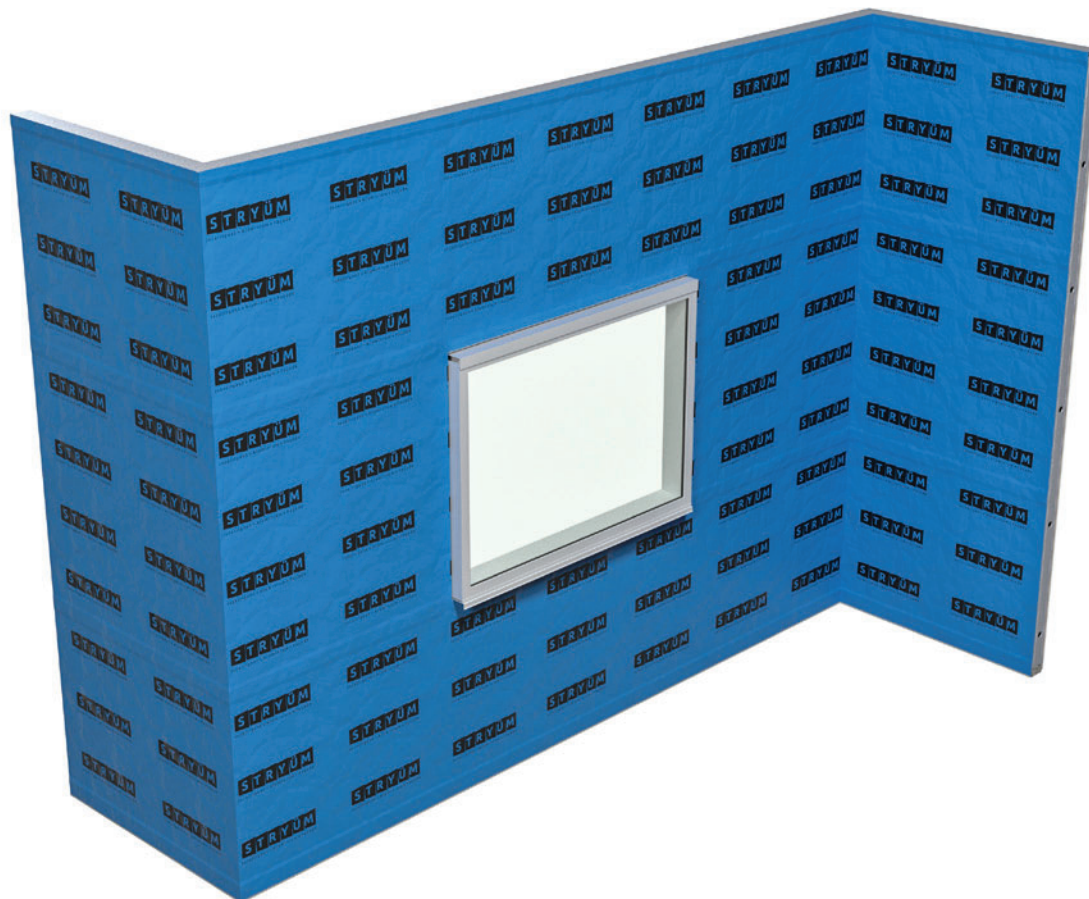
DOCUMENT TRACKING

VERSION #	DATE	CHANGES
1.0	01/02/22	Initial Issue - New Zealand

STEP HORIZONTAL – INSTALLATION GUIDE

Please ensure you review the complete Stryüm Step details on pages 13-26 to ensure you order all the required trims, the following step by step is a guide only.

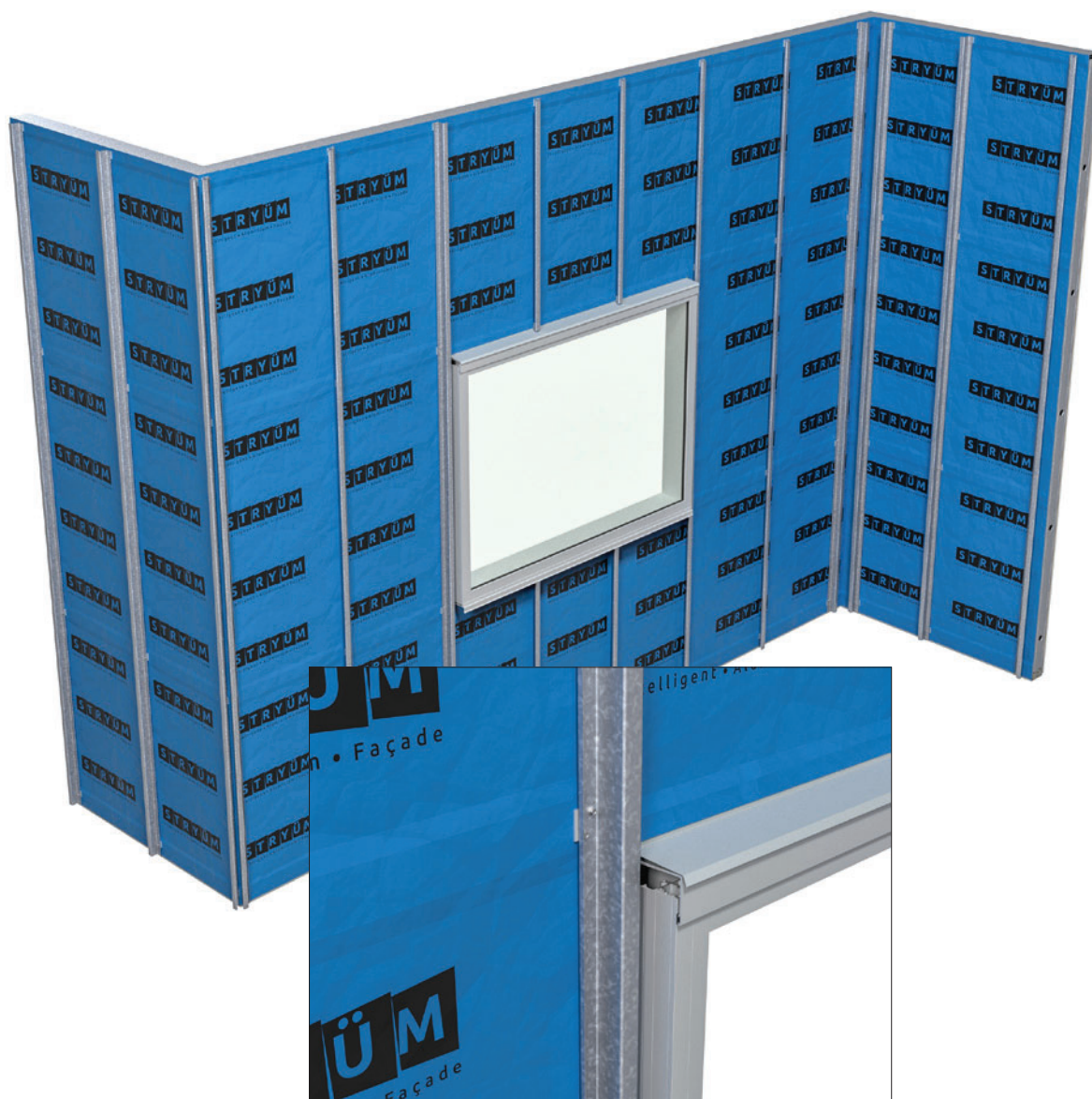
STEP 1 – WEATHERTIGHT MEMBRANE



As Stryüm is a rainscreen façade, a weathertight membrane must be installed over the supporting wall. This membrane needs to meet the project specific requirements for weathertightness and be installed as per manufacturers guidelines. All penetrations through the membrane must be sealed.

Items On This Page			
Code	Description	Length	Supplied by Paneltec
N/A	Waterproof Membrane - Solitex Extasana	N/A	x

STEP 2 – SUBSTRATE



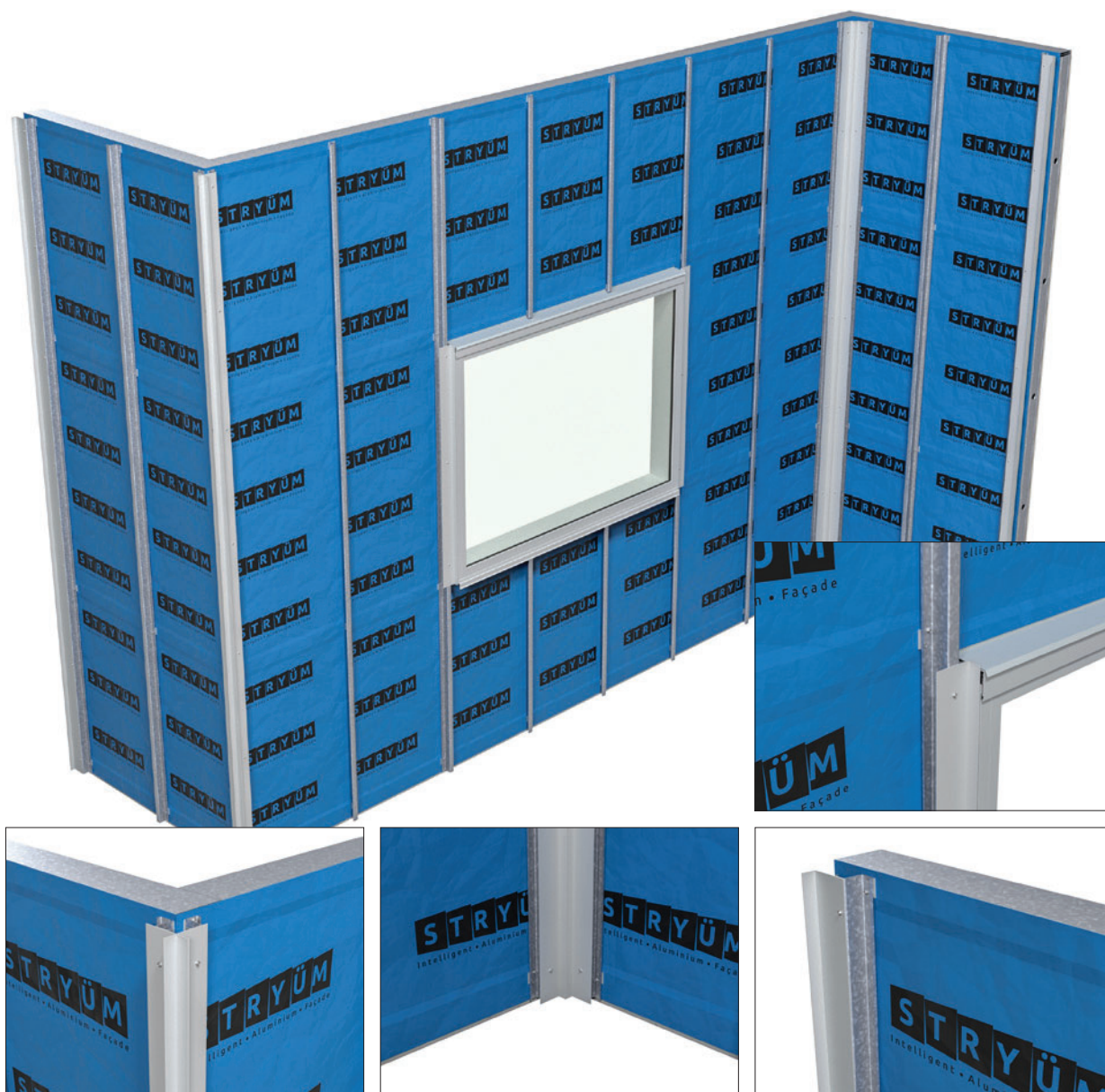
Packers for a plumb substrate and ventilation need to be installed as required prior to the installation of the Stryüm S Section.

Install Stryüm S Section substrate vertically. The substrate needs to be level to ensure the cladding is flat once installed. Any imperfections in this substrate will be highlighted once the panels are installed.

Stryüm S Sections are installed at maximum 600mm centres. Project specific requirements may dictate shorter span lengths.

Items On This Page			
Code	Description	Length	Supplied by Paneltec
TRM0901	35mm Stryüm S Section	5.8m	✓

STEP 3 – VERTICAL TRIMS

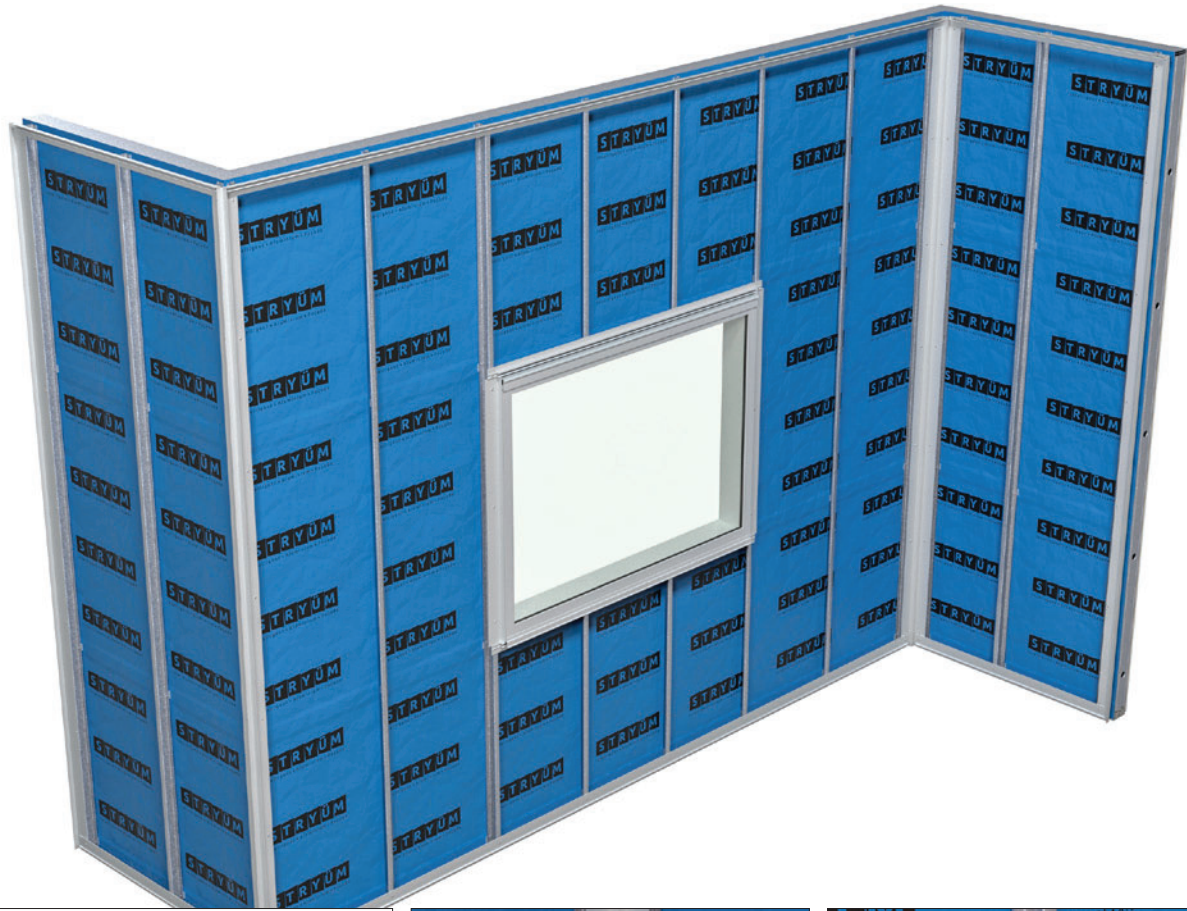


Install the vertical trims for the cladding, at the left and right of the cladding section, at either side of any wall penetrations, and at any corners. When installing down to an adjacent flat surface such as a garden bed or pathway, a minimum of 150mm from the ground is recommended to prevent rain splash back dirtying the façade.

If the cladding is being completed in sections, it is important the trims for either side of a cladding zone are installed prior to the cladding being installed to ensure a clean finish.

Items On This Page			
Code	Description	Length	Supplied by Paneltec
TRM0508	25 x 70 x 1.6 L-Angle	5.8m	✓
TRM5401	Step X Section	5.8m	✓
TRM5401	Step W Section	5.8m	✓

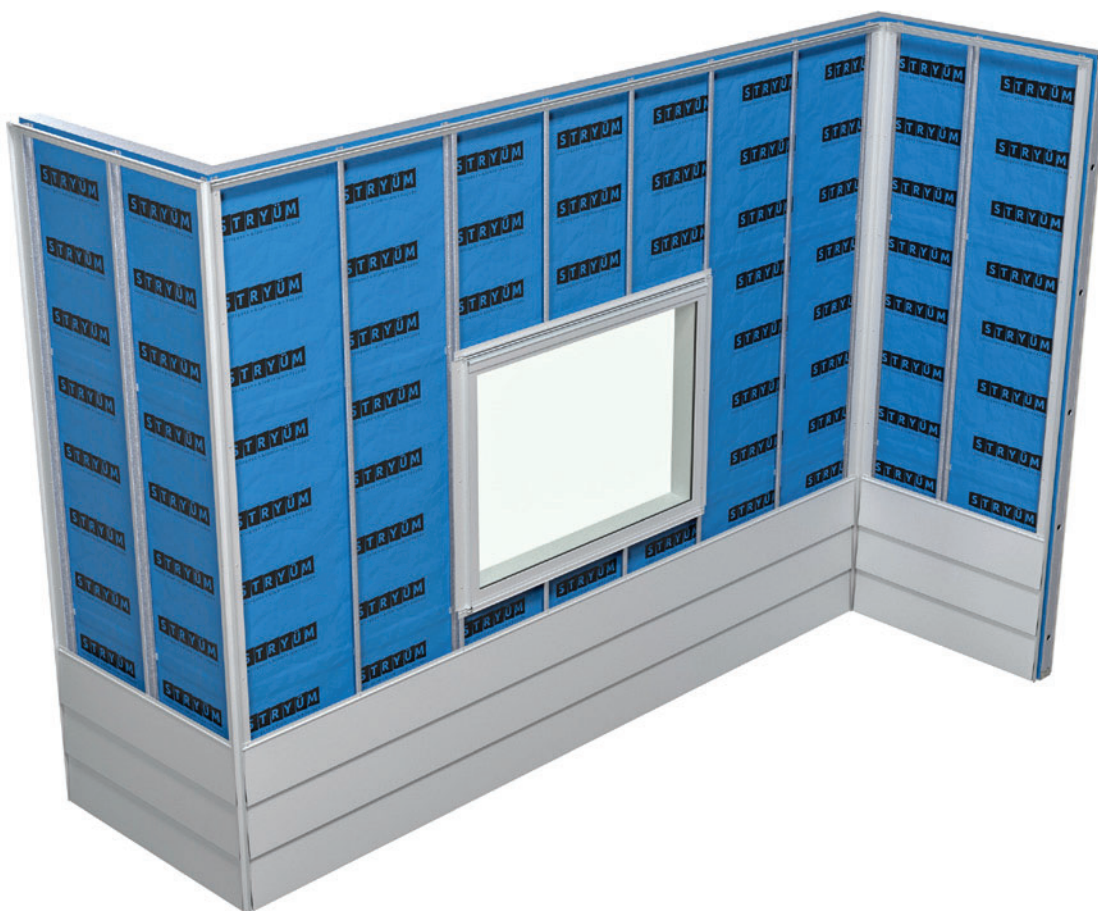
STEP 4 – HORIZONTAL TRIMS



Install the horizontal trims for the cladding, at the top and bottom of the cladding section, above and below any wall penetrations, and at any slab junctions.

Items On This Page			
Code	Description	Length	Supplied by Paneltec
TRM5101	Step Starter Strip	5.8m	✓
TRM0201b	Stop End (Female)	5.8m	✓

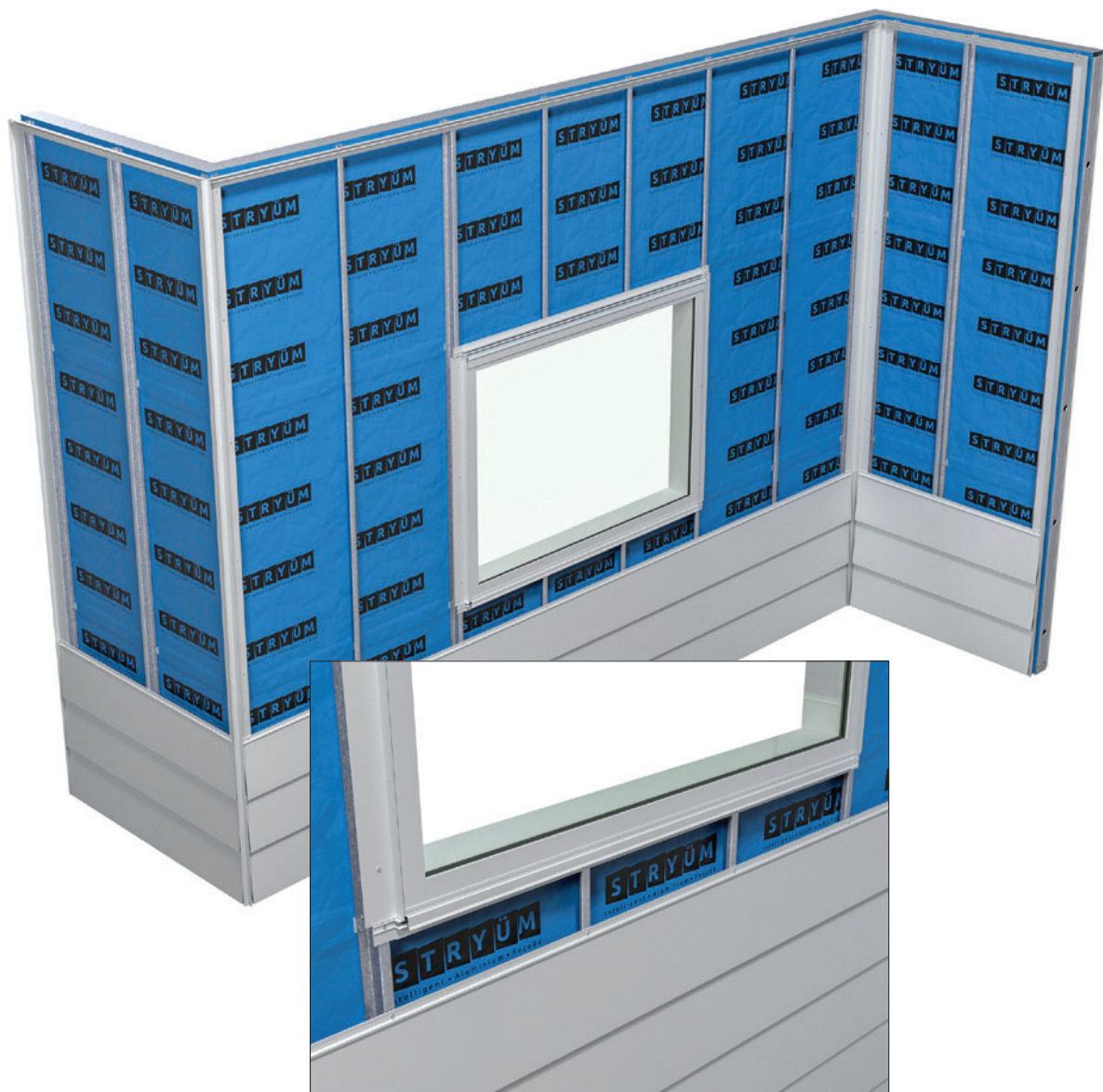
STEP 5 – INSTALL CLADDING



Install the cladding by cutting the panels to length, hooking the panel into the previous panel, and affixing to the S Section. Due to the rainscreen façade system Stryüm utilizes, a minimum airflow gap of 10mm must be maintained at the top and bottom of the cavity.

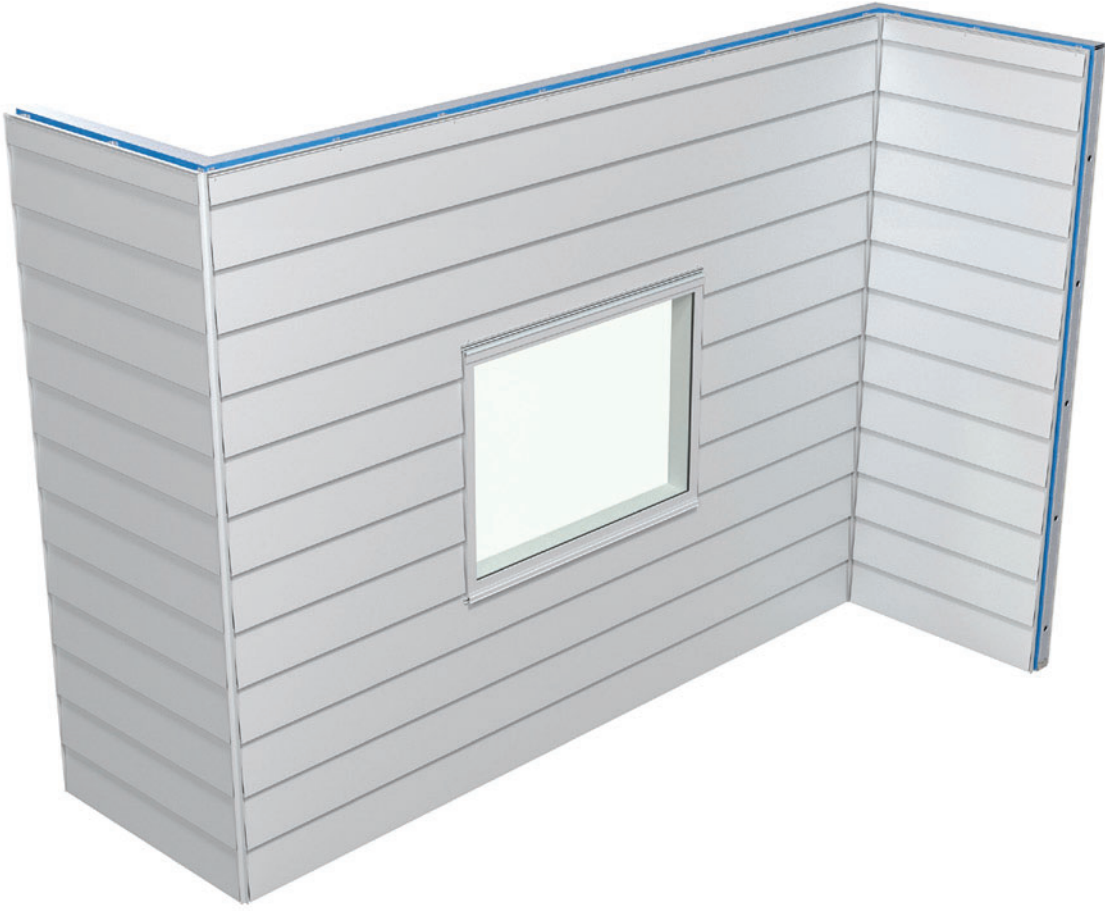
Items On This Page			
Code	Description	Length	Supplied by Paneltec
ST250	Step	5.8m	✓

STEP 6 – PACKER FOR WALL PENETRATION



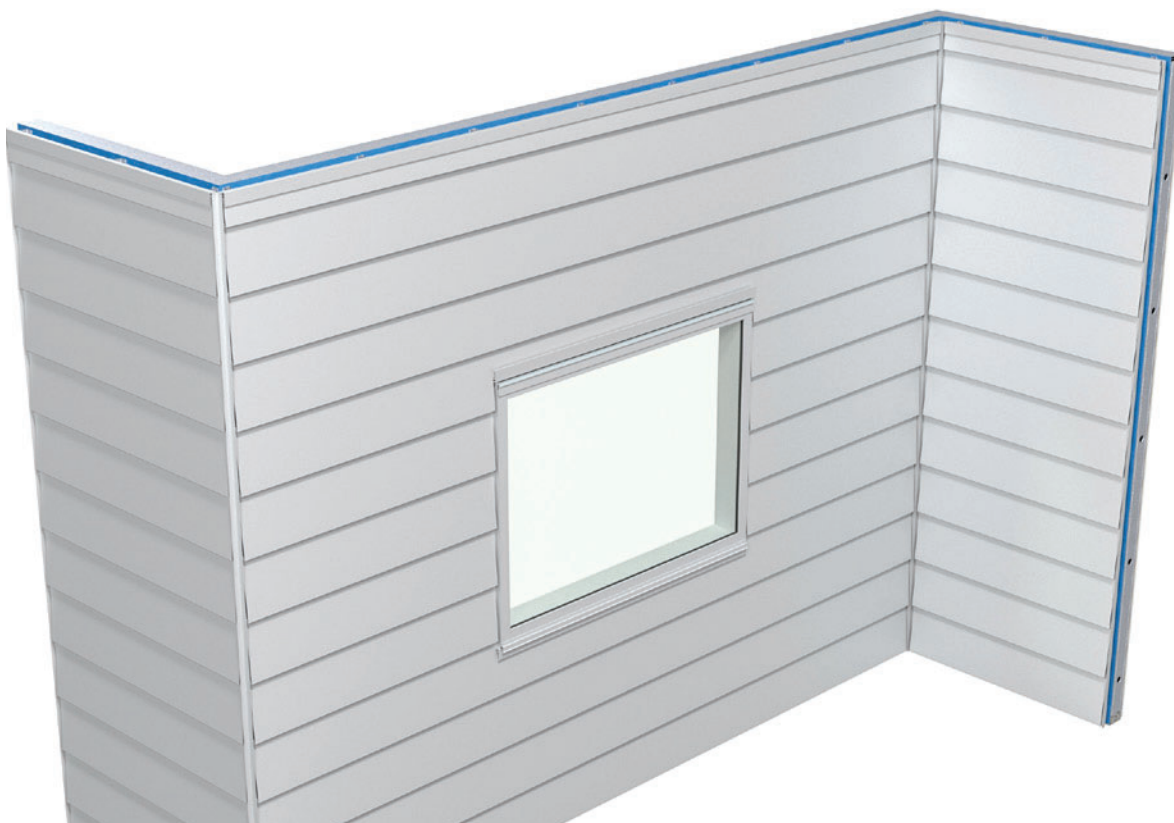
Due to the sloping nature of Step, the depth packer required to support the panel around wall penetrations will depend on where the penetrations sit down the panel. Measure carefully where the panel needs to be cut, and calculate the packer required before.

This step will need to be repeated for any wall penetration, including the window head, and the top of any wall sections including slab junction, parapet and soffit details.

STEP 7 – INSTALL CLADDING

Items On This Page			
Code	Description	Length	Supplied by Paneltec
ST250	Step	5.8m	✓

STEP 8 - CLIP ON COVER PIECE



Install the cover sections to the two-piece trims to conceal rivets and cut edges. Push firmly into place, a rubber mallet may be used paying careful attention to the finish.

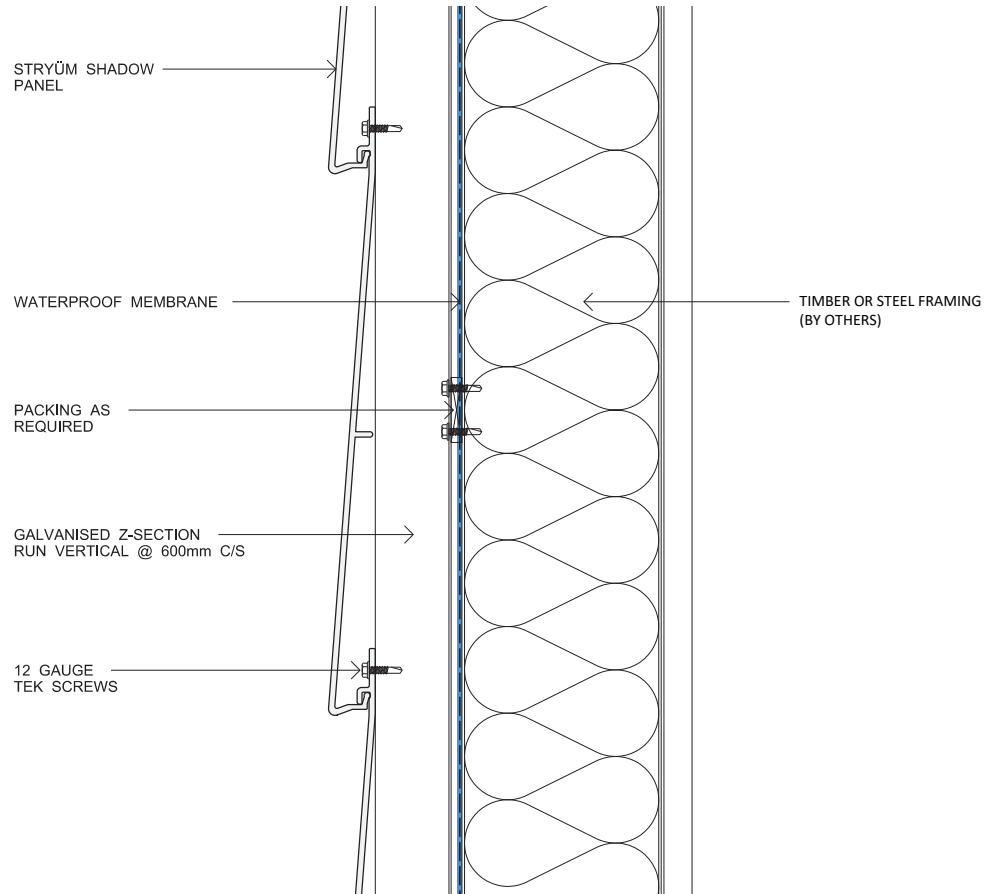
Items On This Page			
Code	Description	Length	Supplied by Paneltec
TRM0201a	Stop End (Male)	5.8m	✓

11. STEP HORIZONTAL

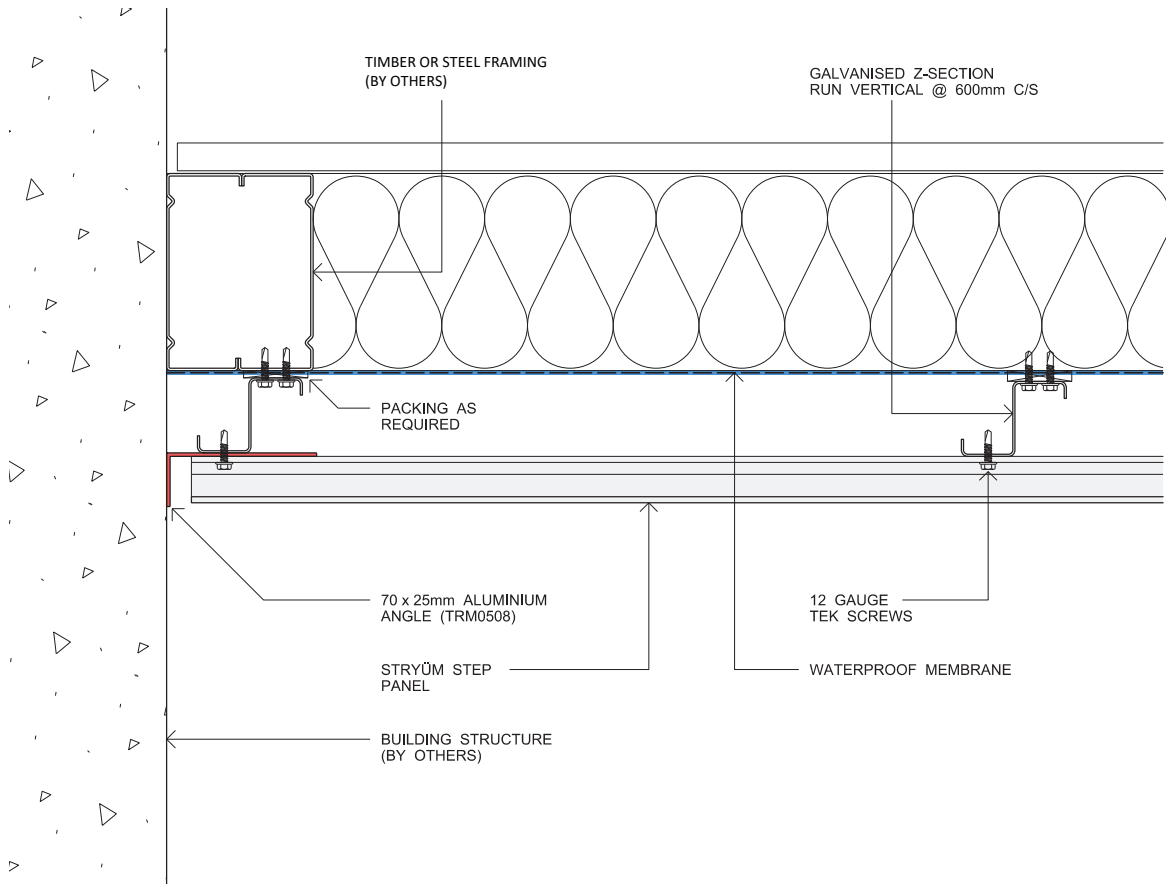
11.2 GENERAL DETAILS

STEP HORIZONTAL – GENERAL DETAILS

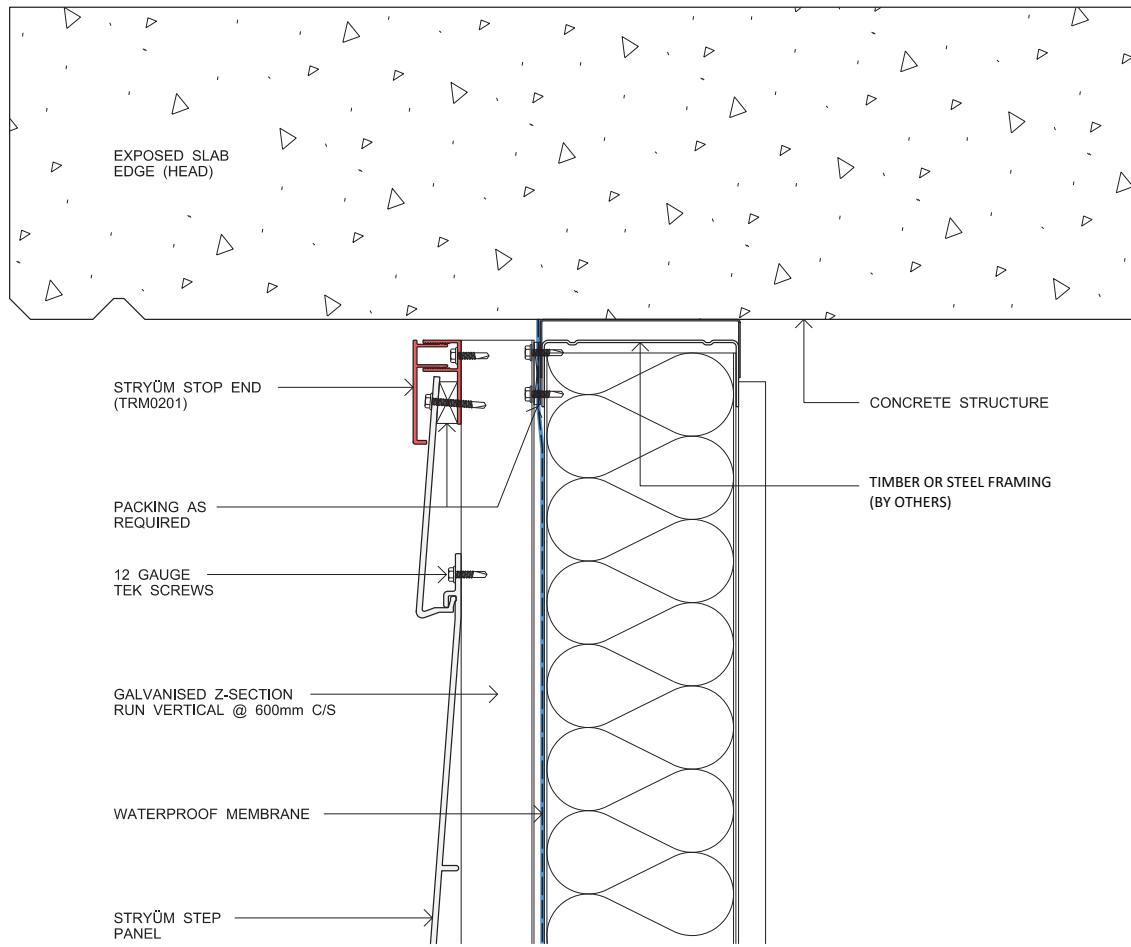
STEP H PANEL CONNECTION



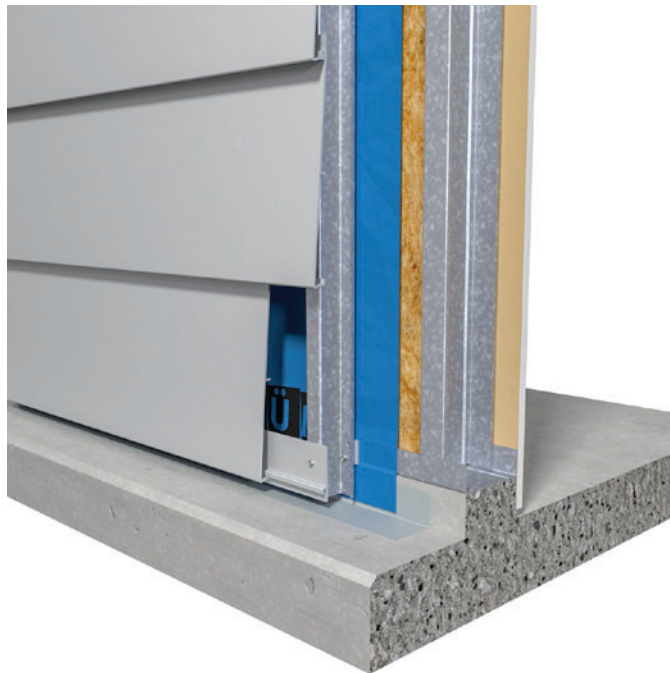
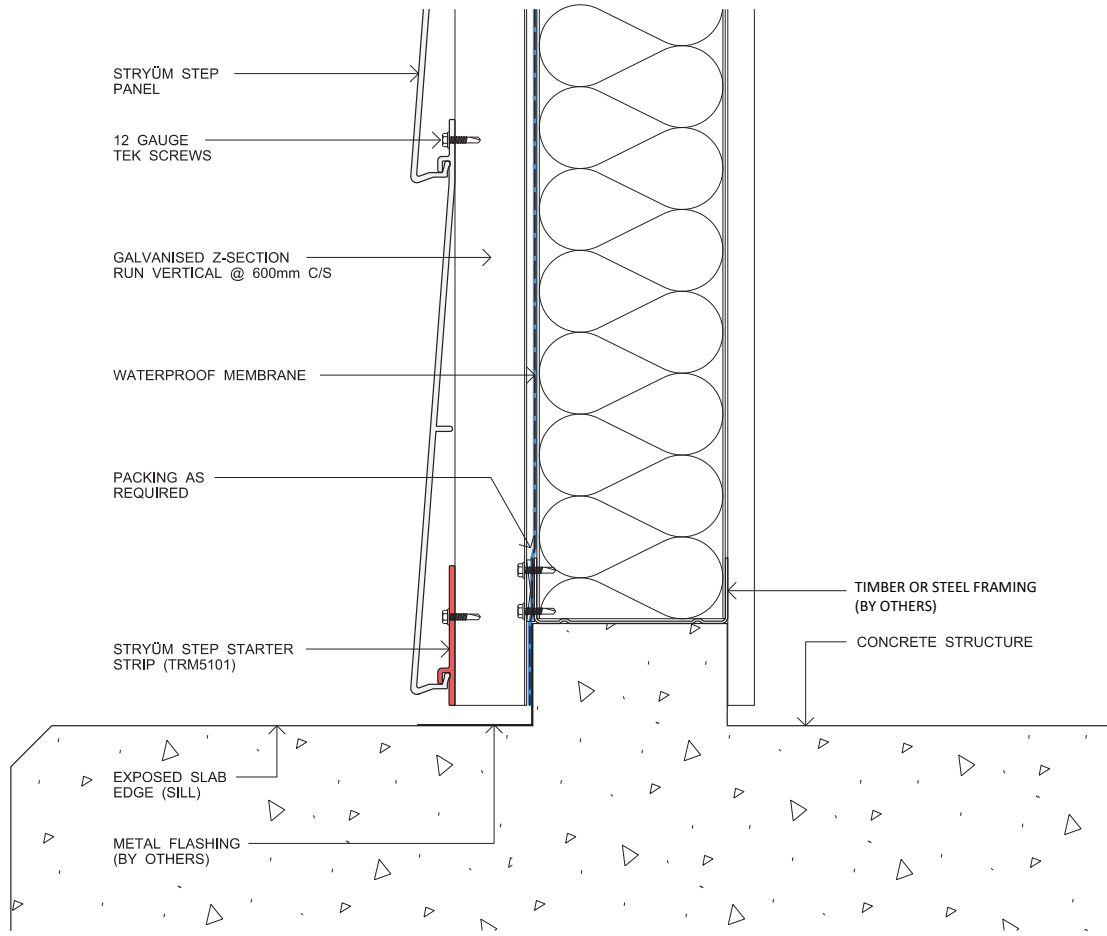
STEP H PANEL START END



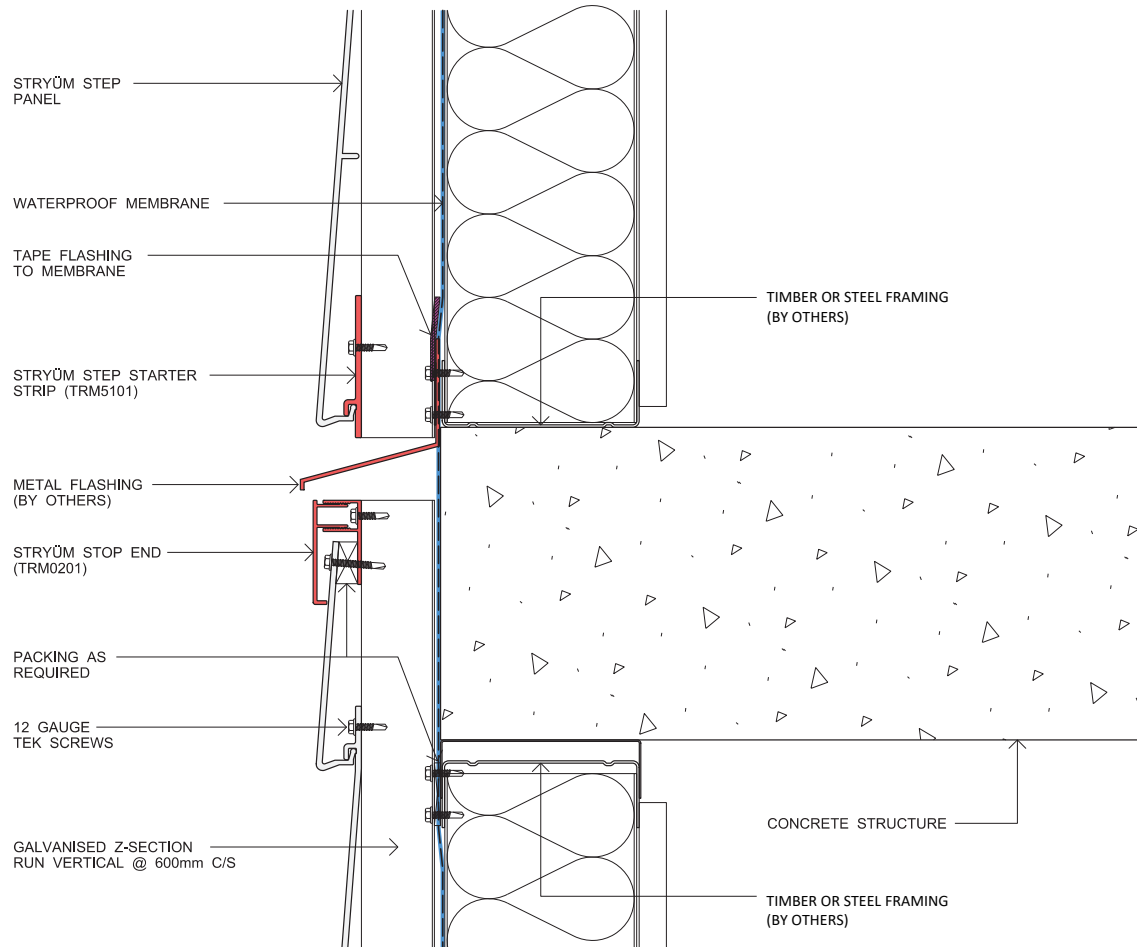
STEP H SLAB JUNCTION



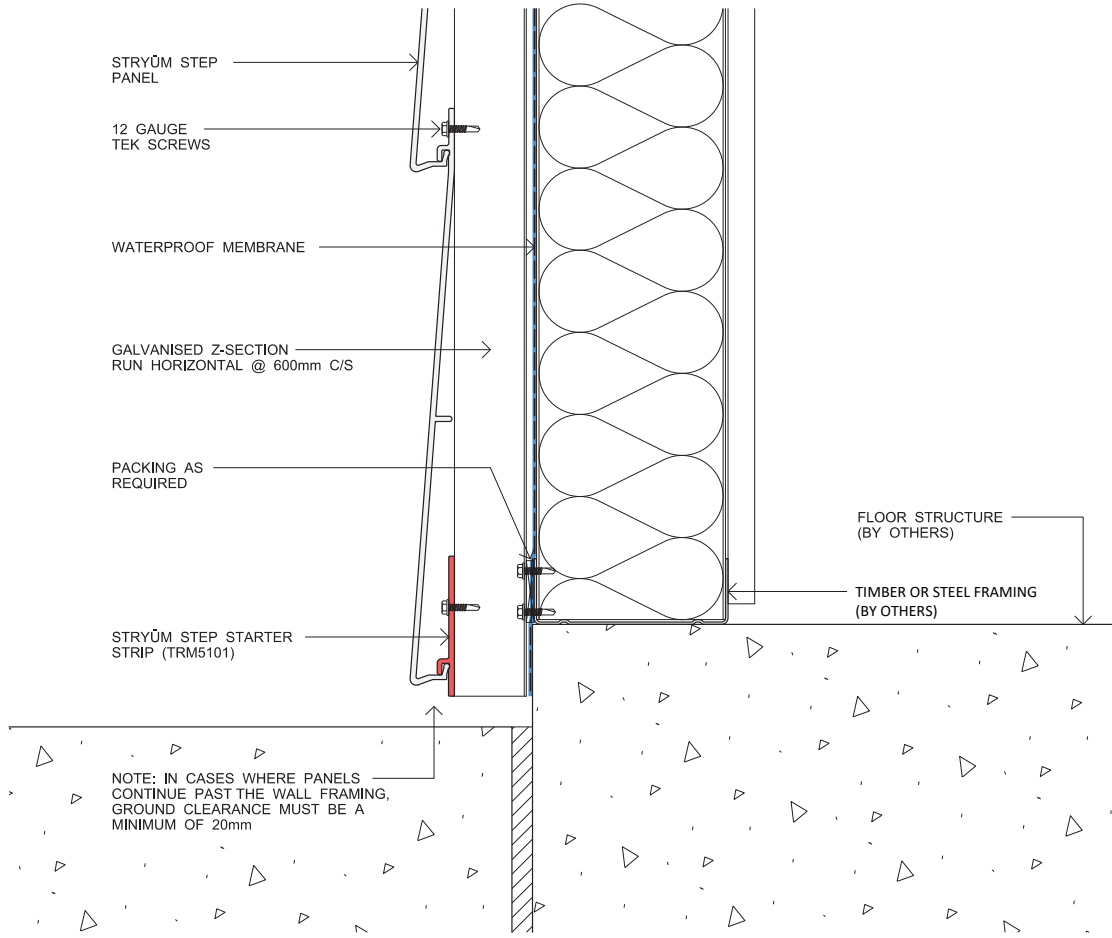
STEP H BASE SLAB JUNCTION



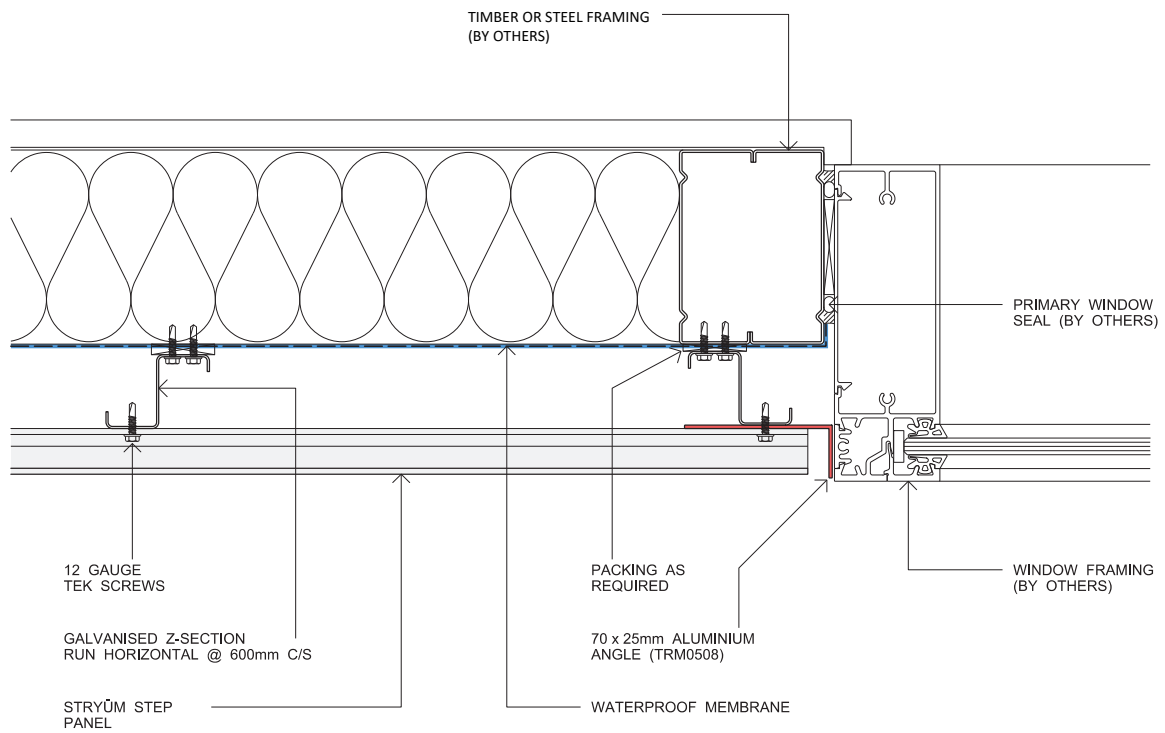
STEP H SLAB JUNCTION CONCEALED



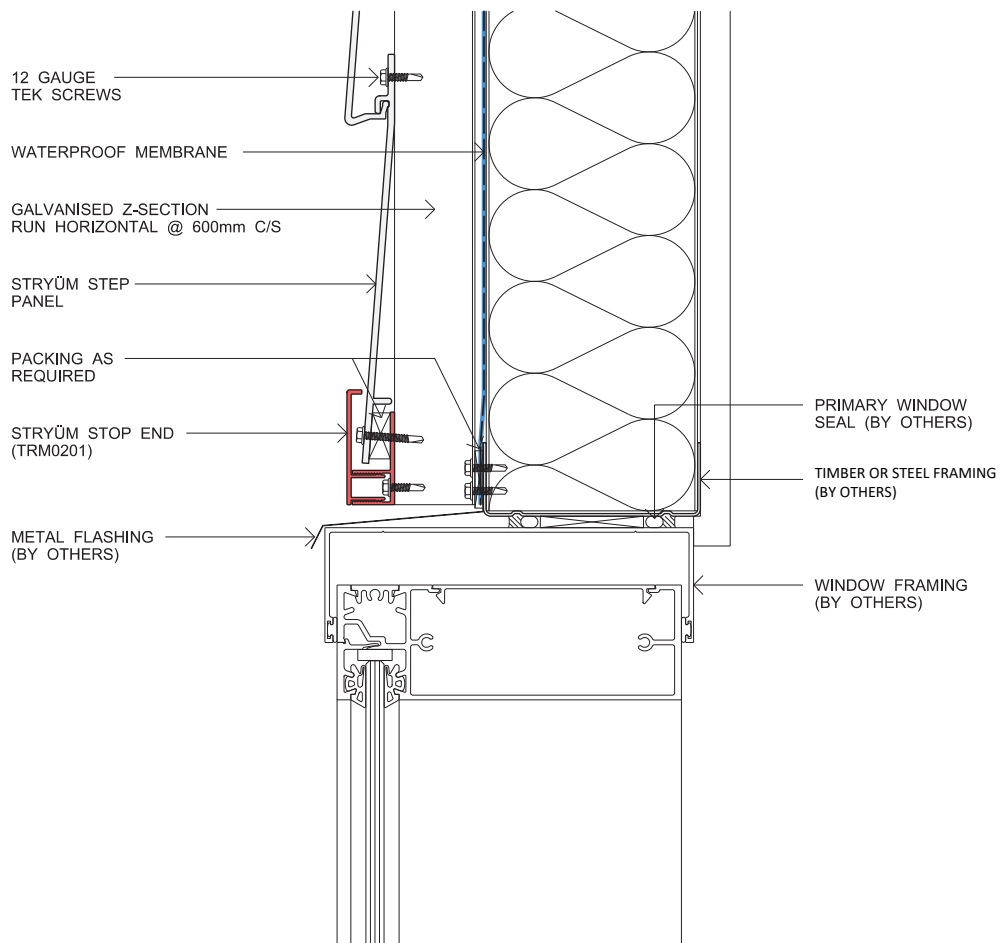
STEP H PANEL END FLOOR



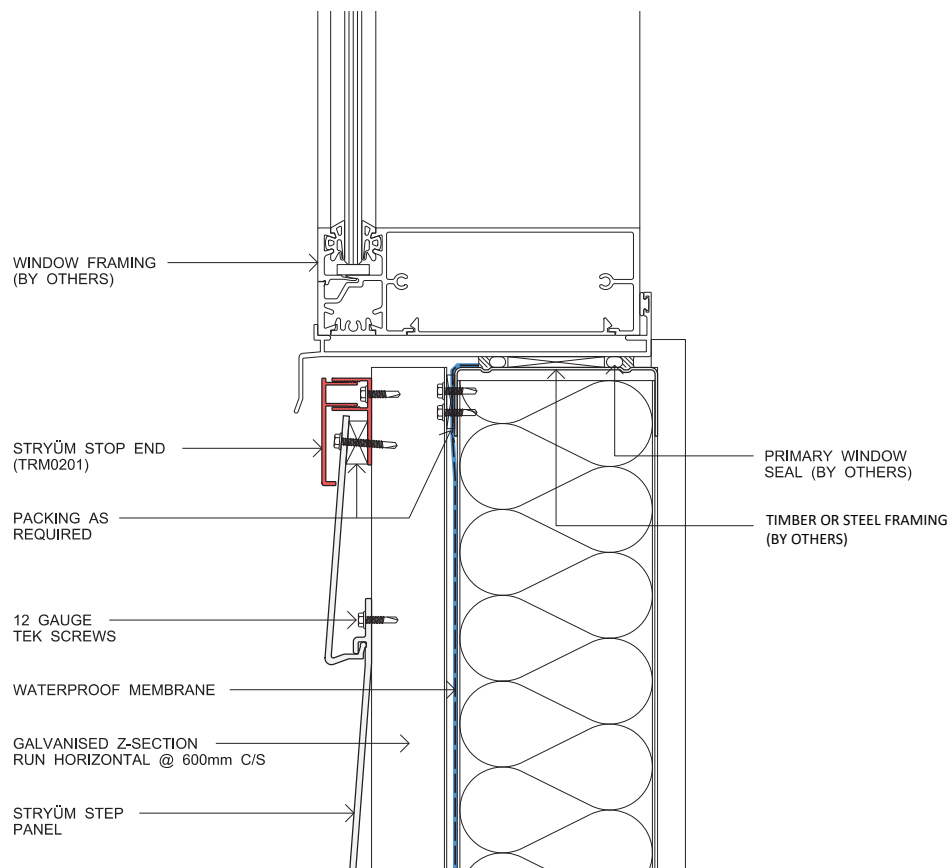
STEP H WINDOW JAM



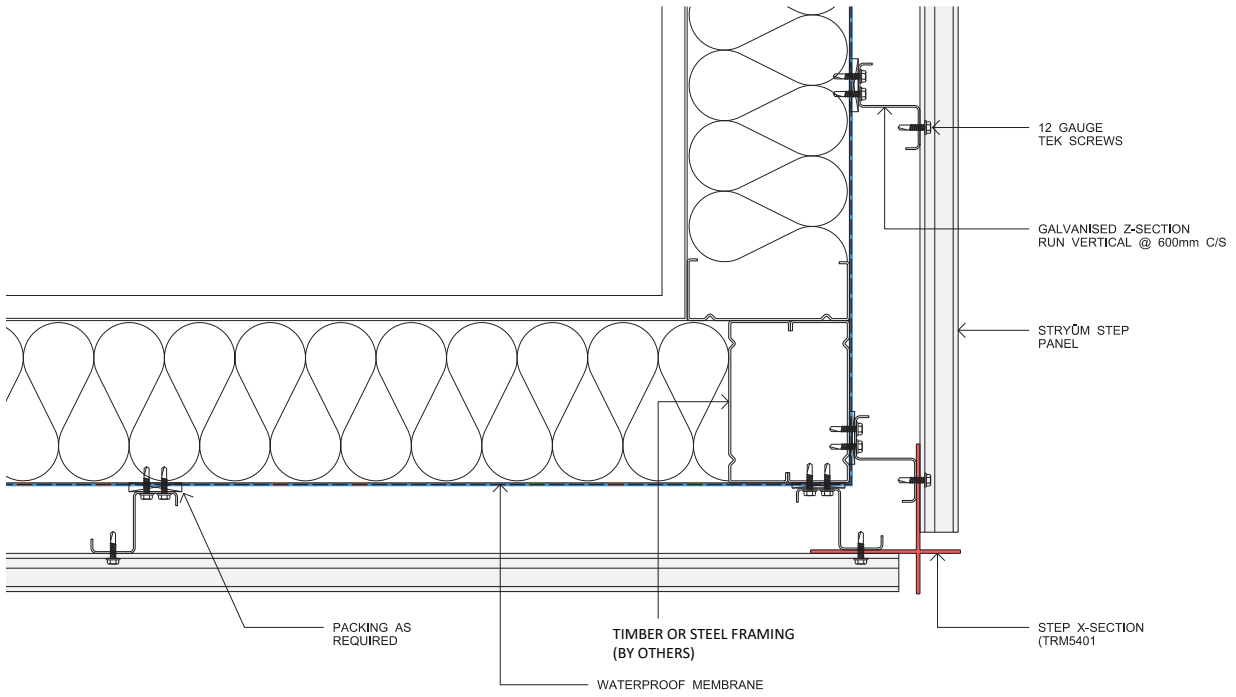
STEP H WINDOW HEAD



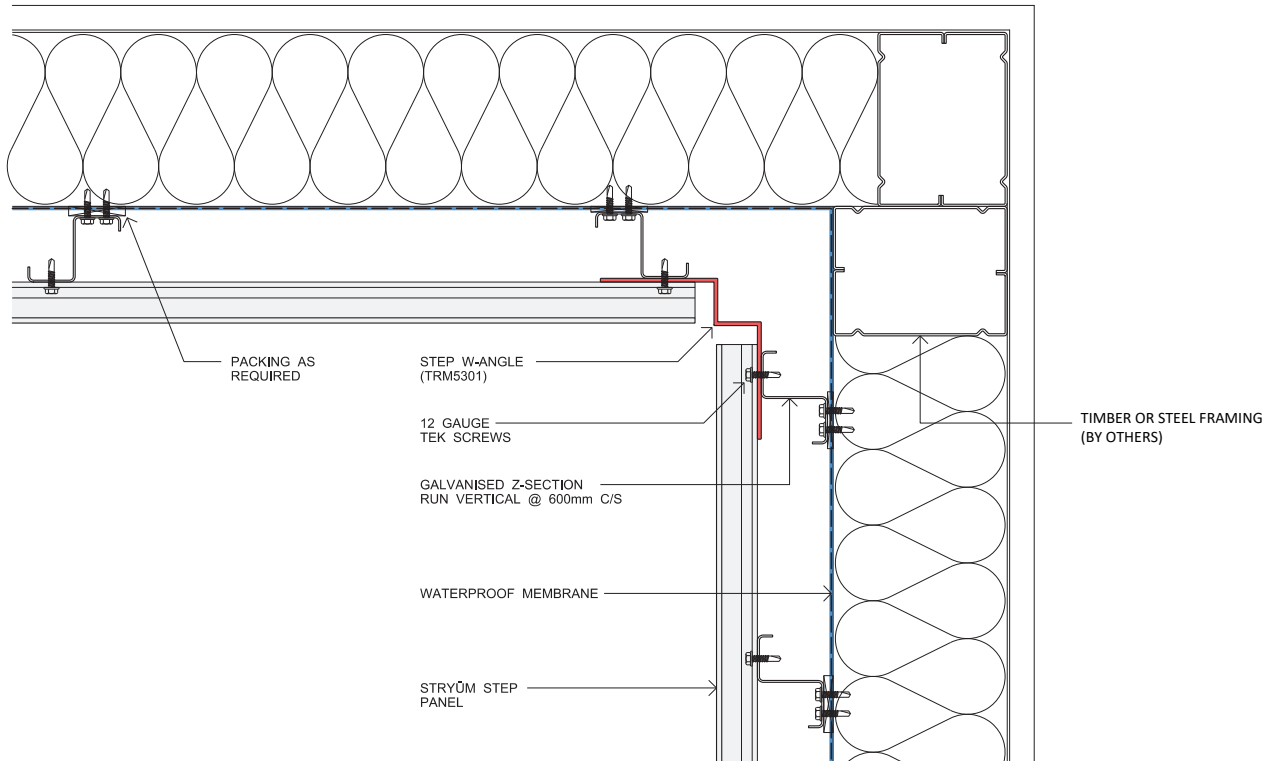
STEP H WINDOW SILL



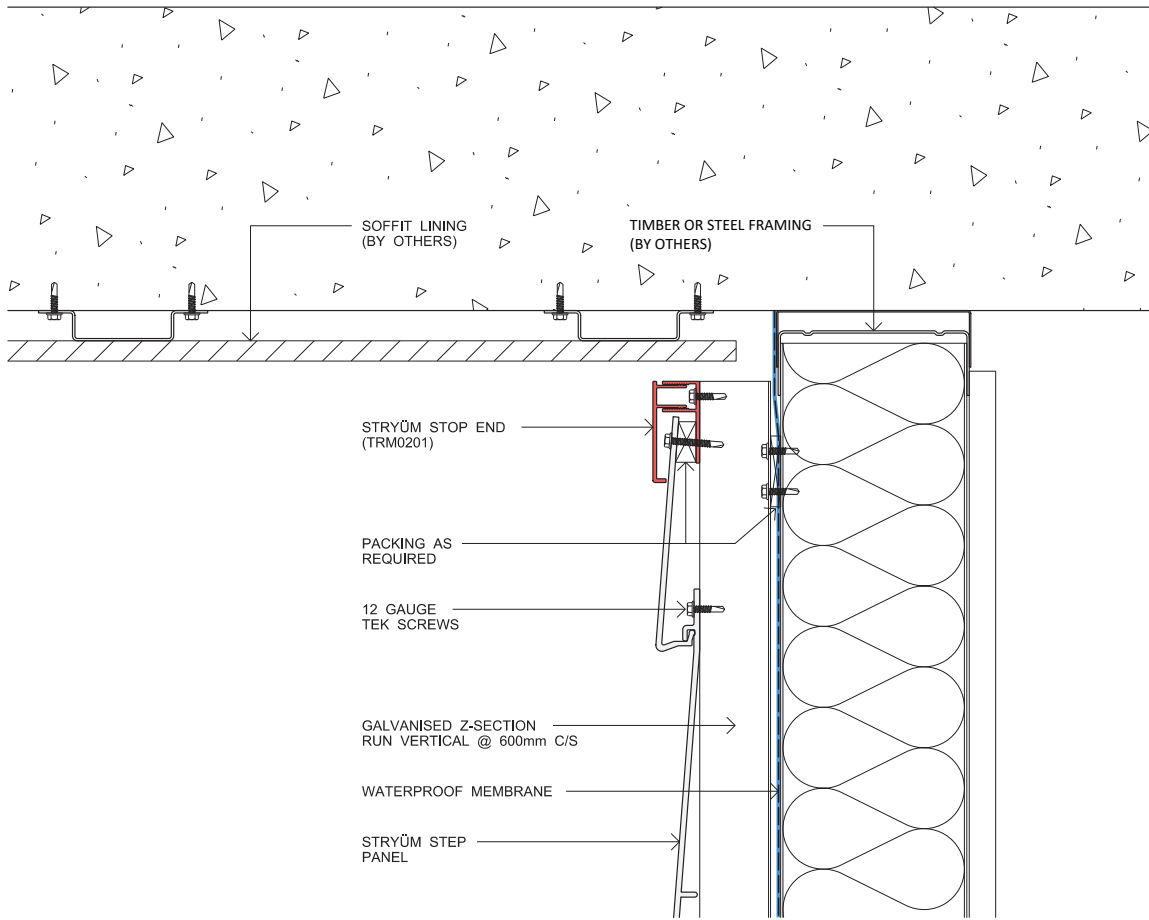
STEP H EXTERNAL CORNER



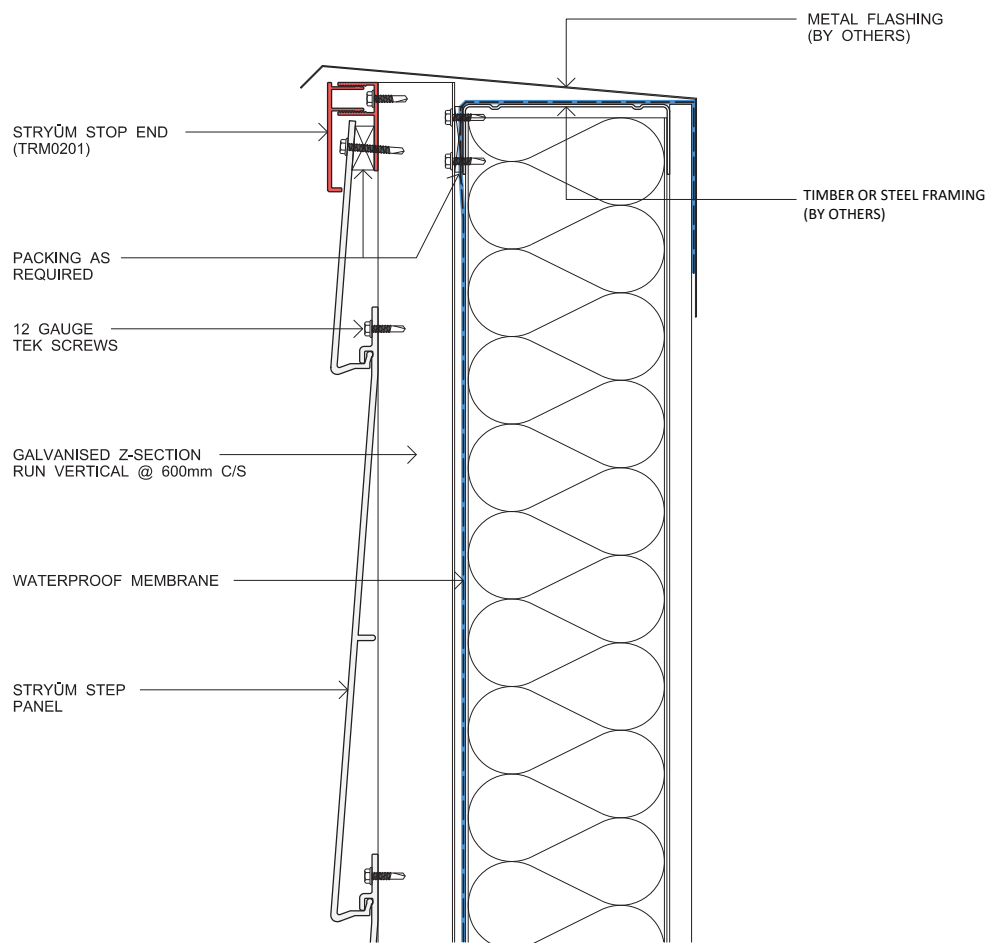
STEP H INTERNAL CORNER



STEP H SOFFIT



STEP H PARAPET



STEP H PANEL CONNECTOR

