



Induracore G2

ALUMINIUM LAMINATED PANELS

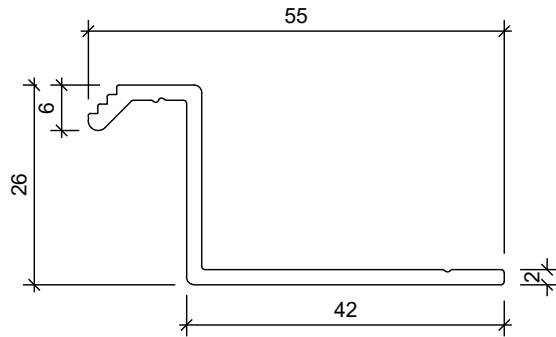
Top Hat Fixing System

Version 2.5
April 2025

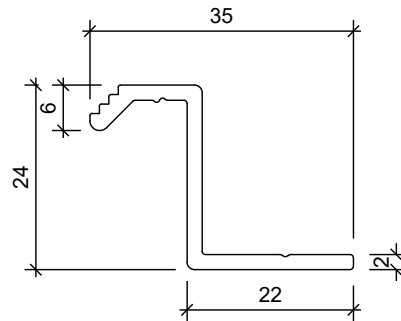
CONTENTS

1. Components	4
2. Vertical Panel Joint	5
3. Horizontal Panel Joint	6
4. Inter-storey Joint	7
5. Internal Corner Panel	8
6. External Corner Panel	9
7. Wall To Soffit - A	10
8. Wall To Soffit - B	11
9. Base Detail - A	12
10. Base Detail - B	13
11. Base Detail - C	14
12. Precast Wall - A	15
13. Precast Wall - B	16
14. Precast Wall - C	17
15. Fibre Cement Internal Corner - A	18
16. Fibre Cement Internal Corner - B	19
17. Vertical Profiled Cladding Internal Corner	20
18. Horizontal Profiled Cladding Internal Corner	21
19. Pipe Penetration @ Soffit	22
20. Vertical Profiled Metal Junction	23
21. Parapet Option - A	24
22. Parapet Option - B	25
23. Parapet Option - C	26
24. Parapet Option - D (w/ minimal upstand)	27

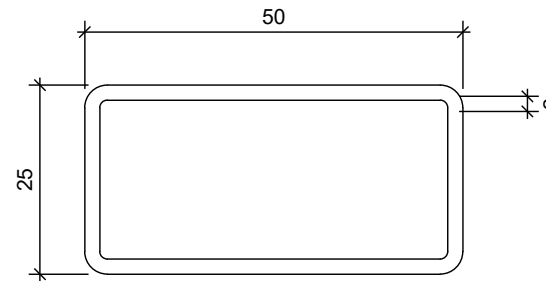
25. Parapet Top Joint	28
26. Fascia To Soffit - A	29
27. Fascia To Soffit - B	30
28. Fascia To Soffit - C	31
29. Fascia To Soffit - D	32
30. Fascia To Soffit - E	33
31. Eyebrow Sill Detail	34
32. Typical Upstand Detail	35
33. Typical Commercial Window Head	36
34. Typical Commercial Window Sill	37
35. Typical Commercial Window Jamb - A	38
36. Typical Commercial Window Jamb - B	39
37. Typical Residential Window Head	40
38. Typical Residential Window Sill	41
39. Typical Residential Window Jamb - A	42
40. Typical Residential Window Jamb - B	43
41. Wall Box Penetration Detail	44
42. Wall Pipe Penetration Detail	45
43. Fin Mounting Detail	46
44. General Differential Movement	47
45. Meter Box Penetration	48
46. Aluminium Stiffener To Induracore G2	49



Indurafix High Z-Angle (First Fix)
Alloy & Temper: 6060-T6
Colour: Mill Finish



Indurafix Low Z-Angle (Second Fix)
Alloy & Temper: 6060-T6
Colour: Mill Finish

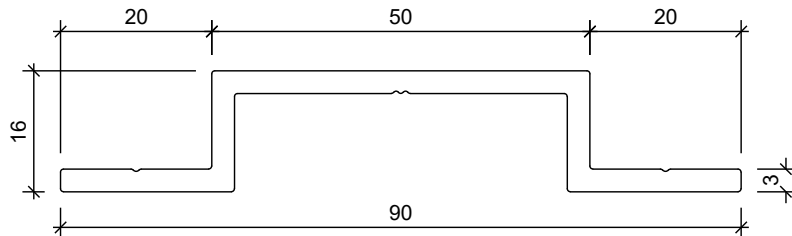


RHS Stiffener 50X25X2mm
Alloy & Temper: 6060-T6
Colour: Mill Finish
Adhesive Glue: Minimum 2mm thick & minimum 50mm wide strip of Sabrebond SMP60
Alignment: Stiffener to be parallel to short edge

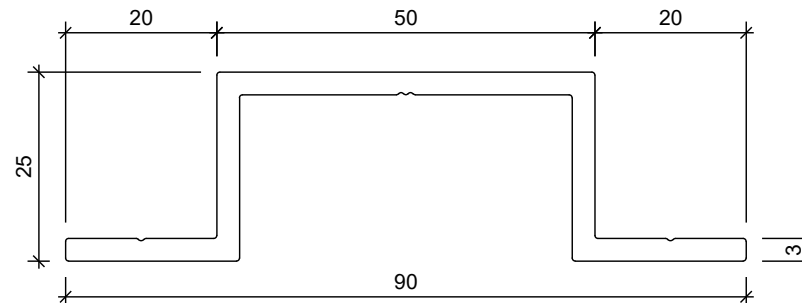
Fixing Requirement of First & Second Fix Z-Angle to Top Hat

Proposed Fastener Diameter: 4.88MM Screw
Minimum Aluminium Edge Distance: 7.32MM

For more information refer to the INDURACORE G2 Aluminium Laminated Panels (Top Hat) Engineering Judgement



16mm TOP HAT EXTRUSION
Alloy & Temper: 6060-T6
Colour: Mill Finish



25mm TOP HAT EXTRUSION
Alloy & Temper: 6060-T6
Colour: Mill Finish

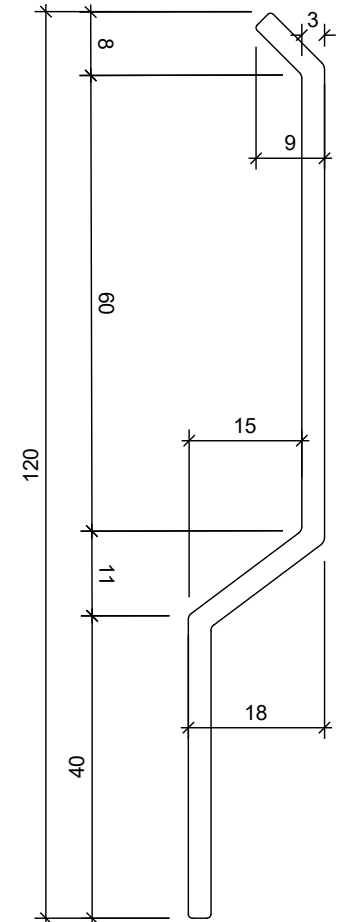
Fixing Requirements

- Top Hat to Timber Substrate**
Proposed Fastener Diameter: 4.88mmØ
No. of Fastener: 2
Minimum Timber Embedment Depth: 40mm
Minimum Aluminium Edge Distance: 10mm
Minimum Timber Edge Distance: 20mm
- TopHat to Steel Stud Substrate**
Proposed Fastener Diameter: 5.59mm
No. of Fastener: 2
Minimum Aluminium Edge Distance: 12mm
Minimum Steel Edge Distance: 12mm
- TopHat to Concrete Substrate**
Proposed Fastener: M6 Hilti HUS4-HR or M6 Anzor AnchorMark G316SS
No. of Fastener: 2
Minimum Concrete Embedment: 55mm
Minimum Concrete Edge Distance: 50mm
Minimum Aluminium Edge Distance: 12mm

For more information refer to the Induracore G2 Aluminium Laminated Panels (Top Hat) Engineering Judgement.
Structure shown on the typical details are on timber framing. Fixing system can also be applied on steel framing.

Fire Cavity Barrier (By Others)

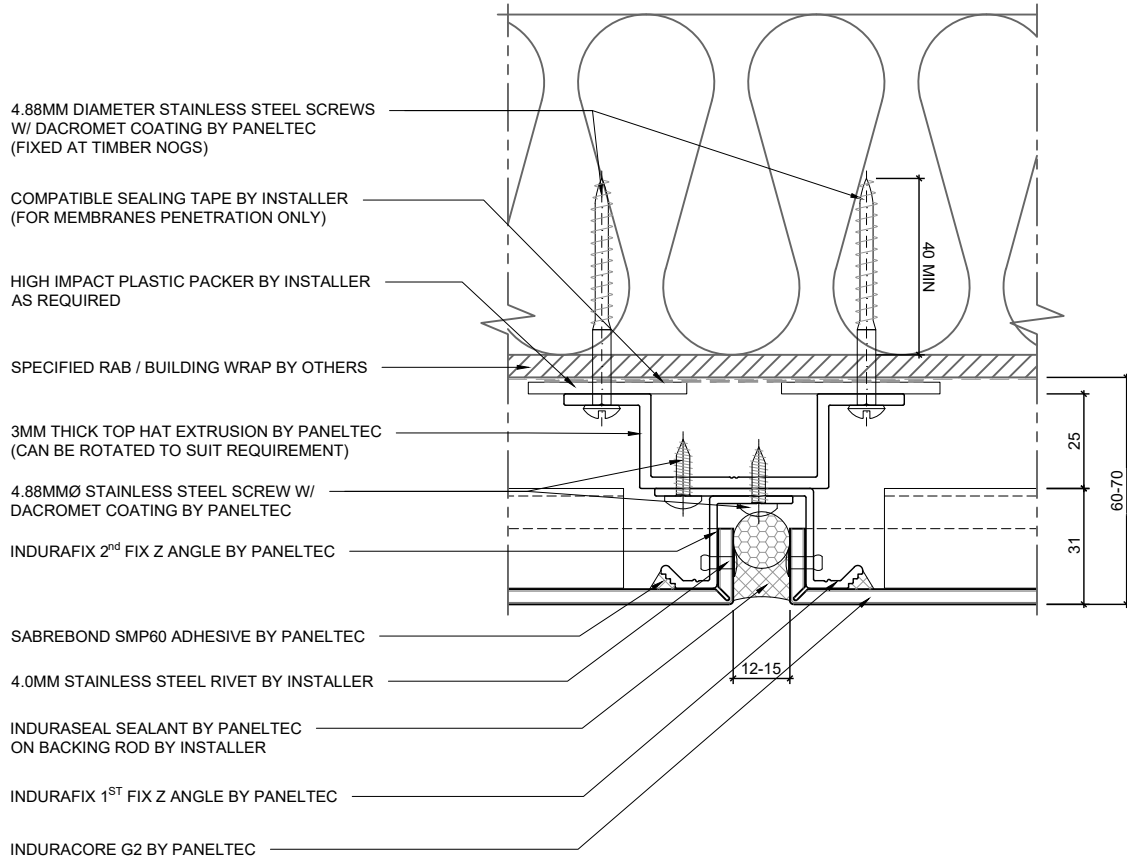
- Ryanfire Intuspan Fire Cavity Barrier or equivalent, where required, to be installed in accordance with C/AS2

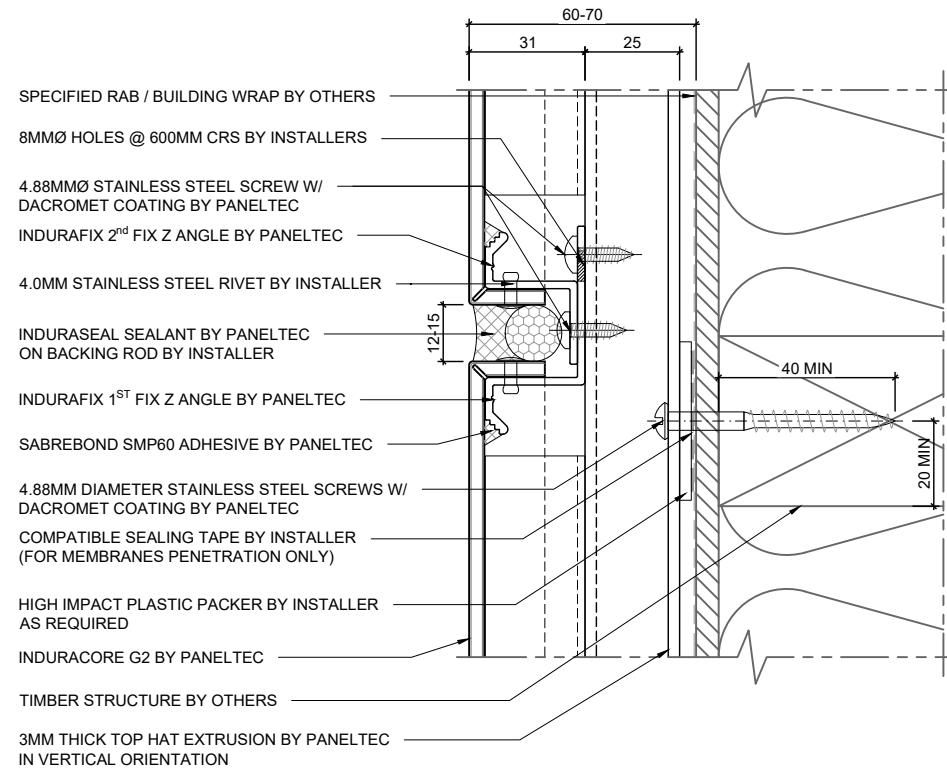


Indurabase Extrusion
Alloy & Temper: 6060-T6
Colour: Mill Finish

2. VERTICAL PANEL JOINT (PLAN DETAIL)

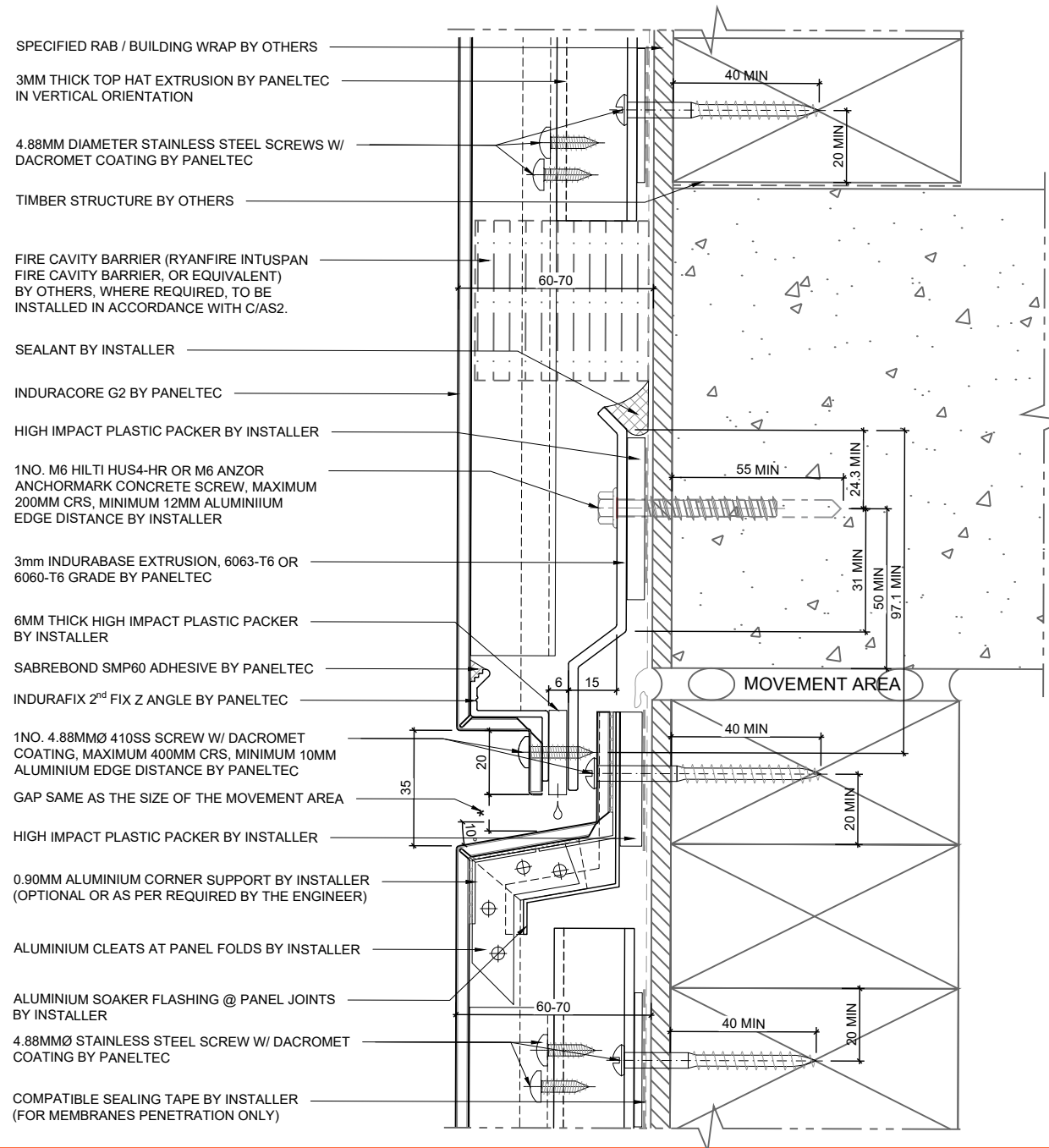
Drawing Scale 1:2

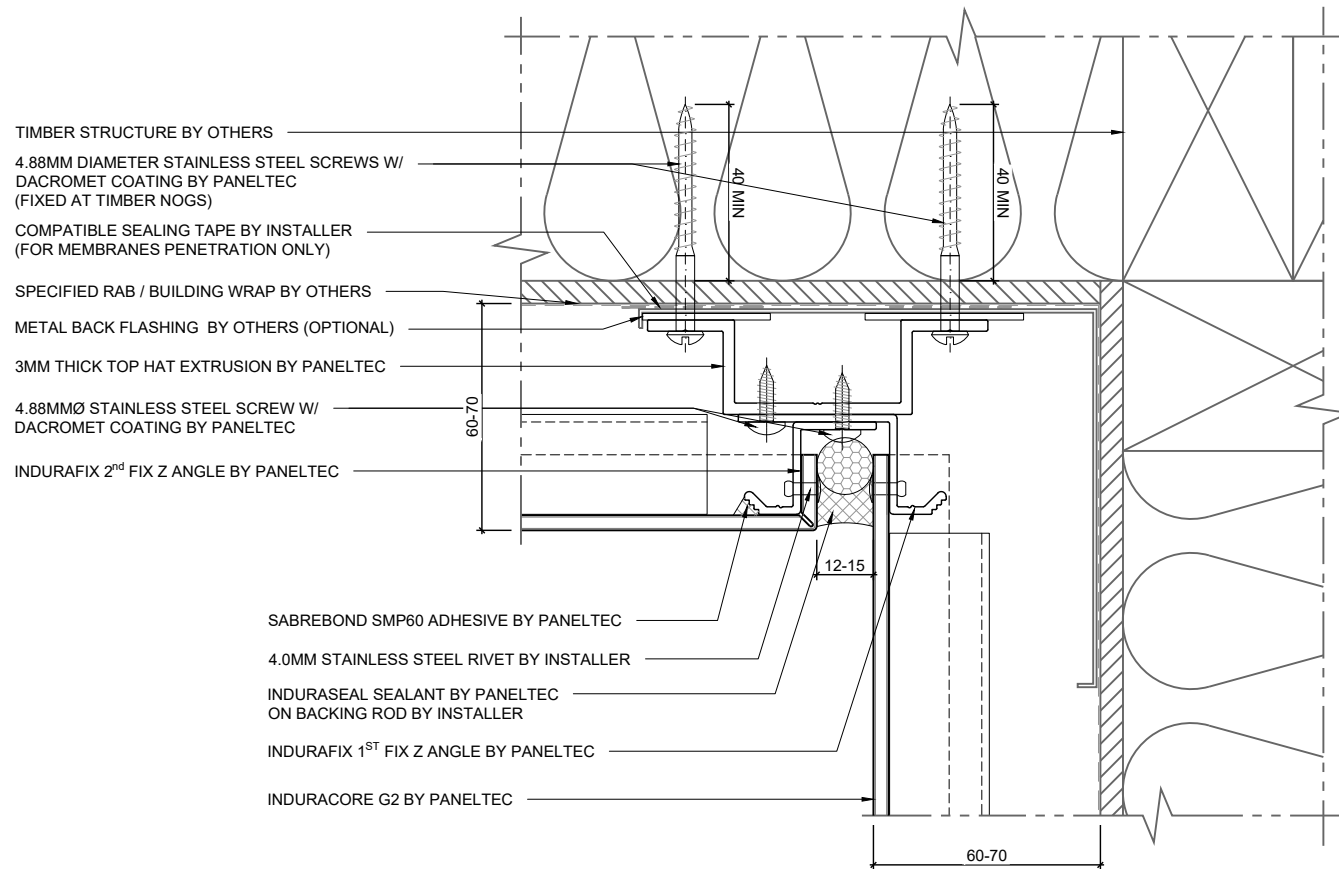


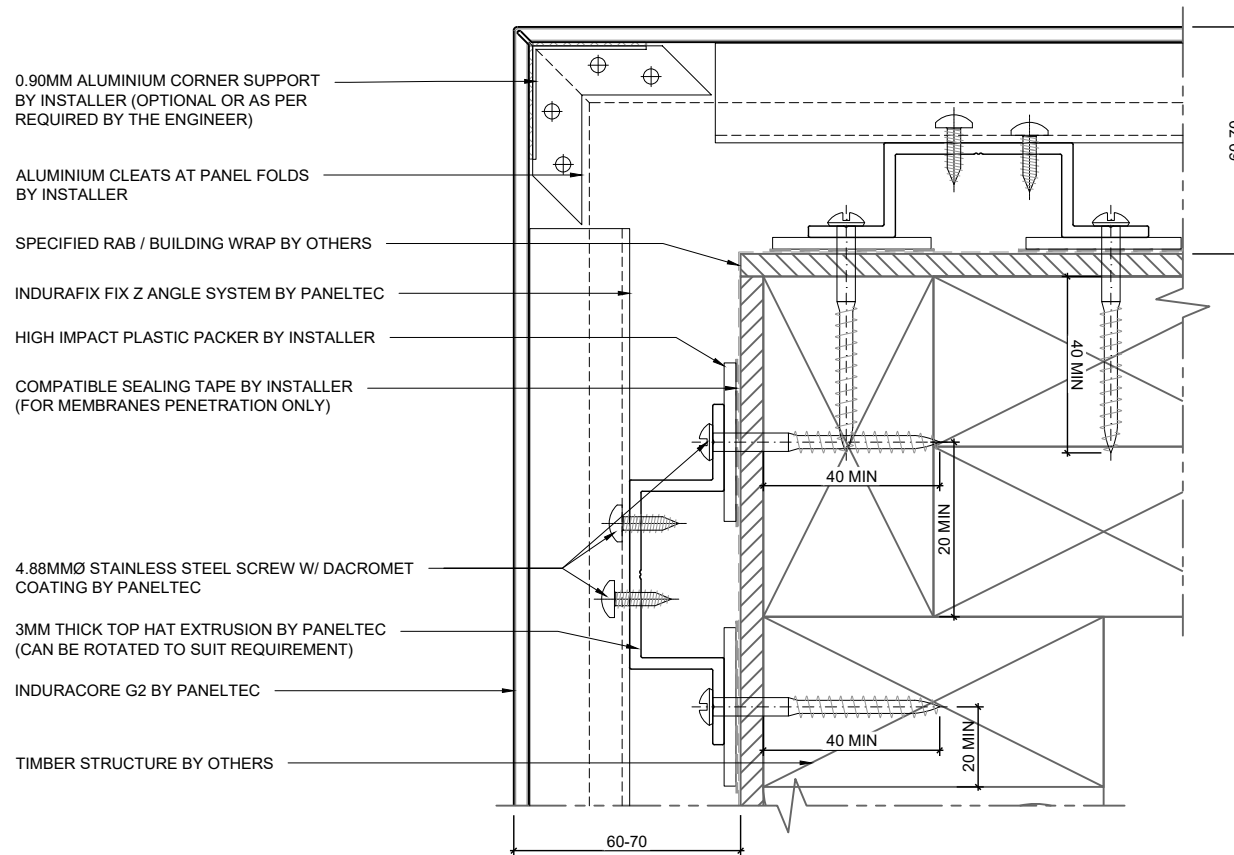


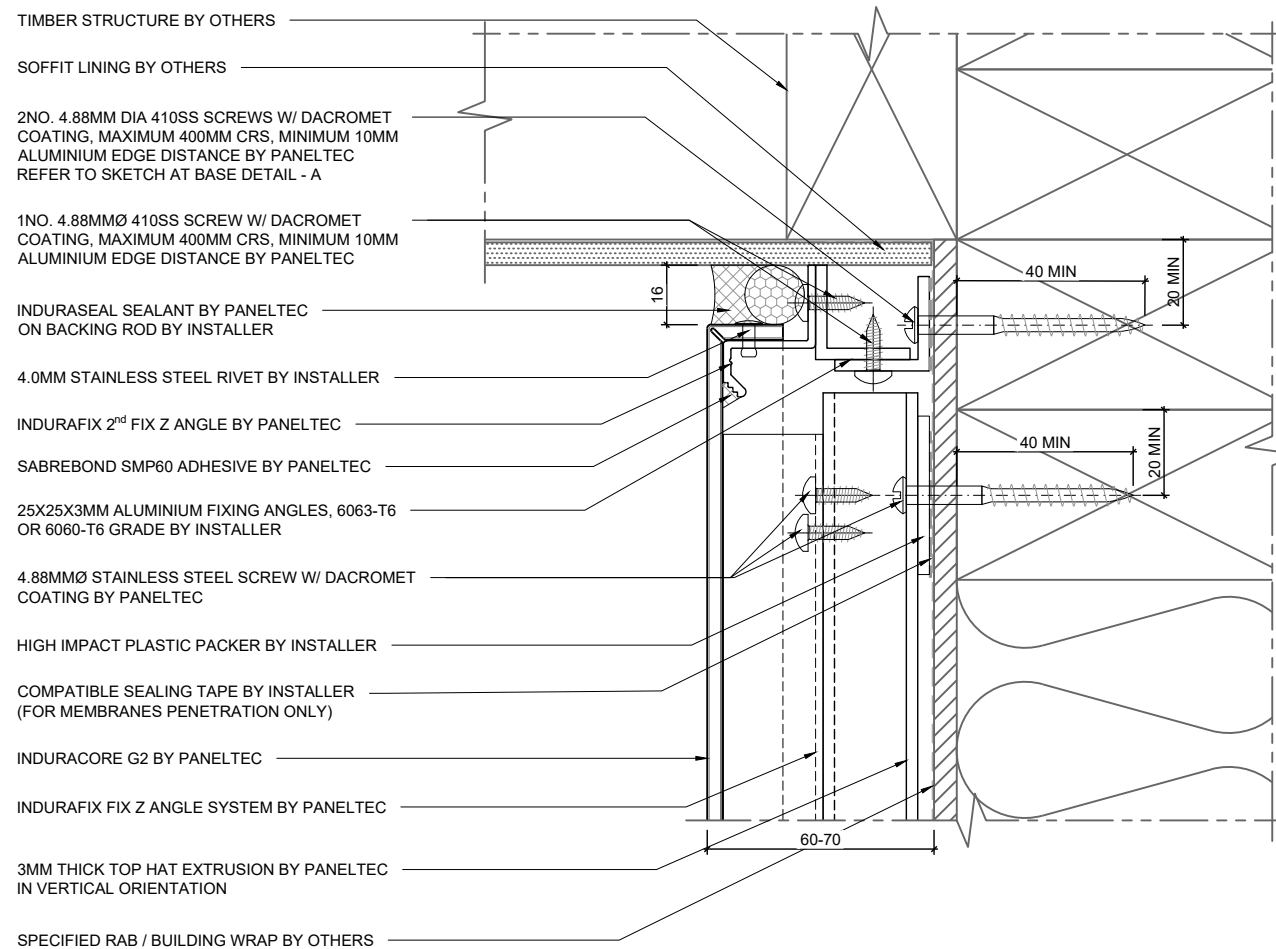
4. INTER-STOREY JOINT (SECTION DETAIL)

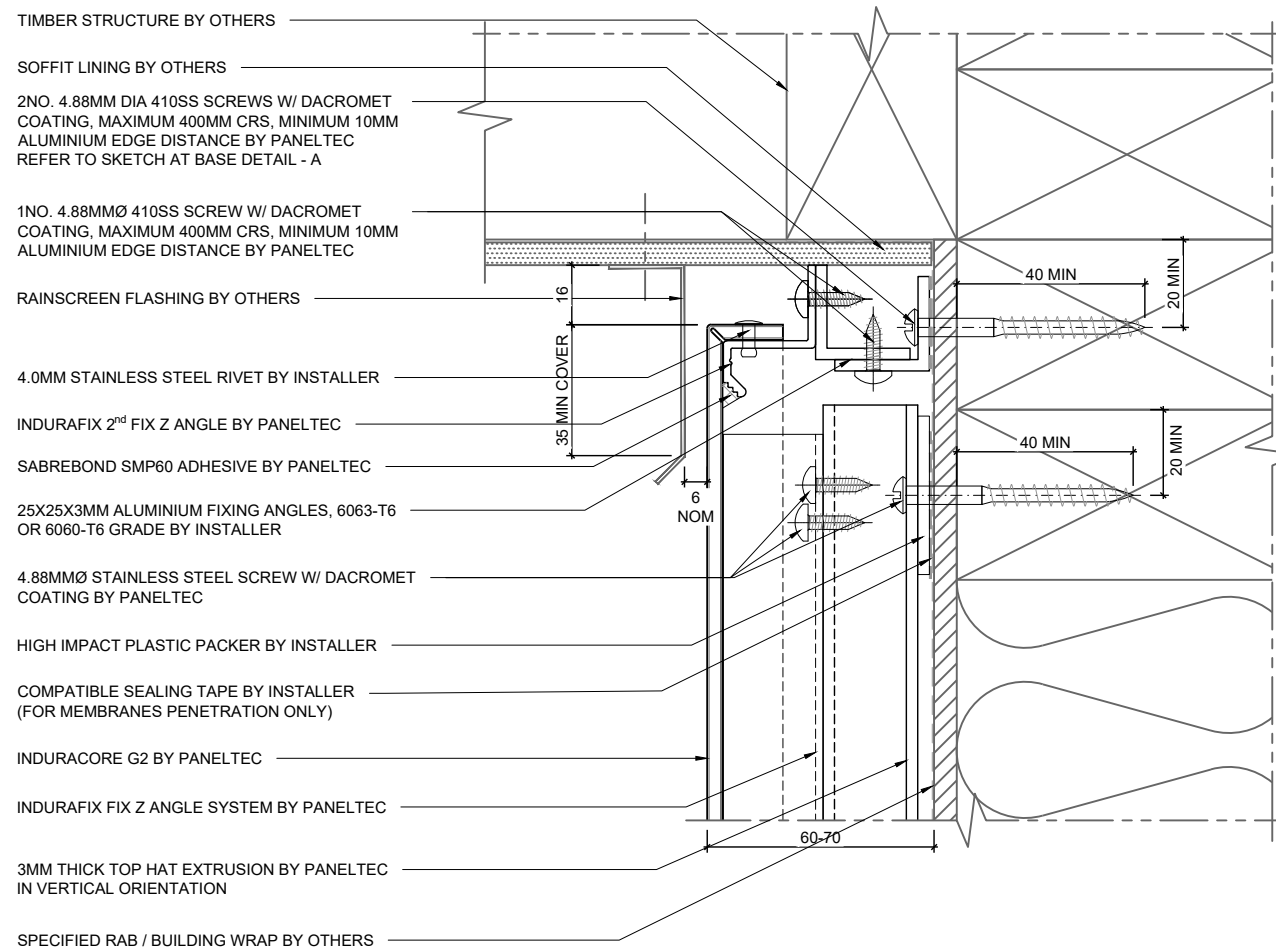
Drawing Scale 1:2

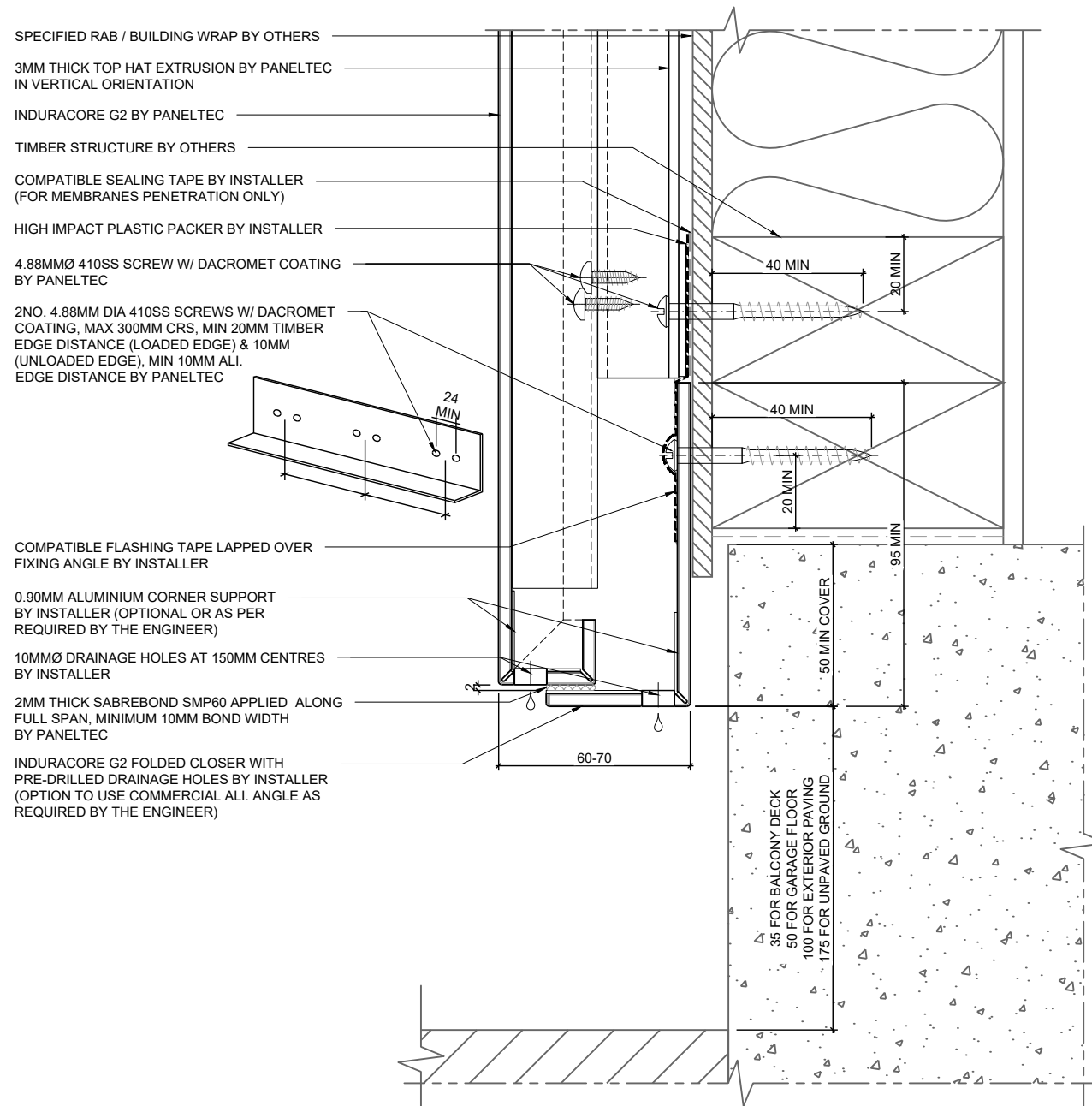


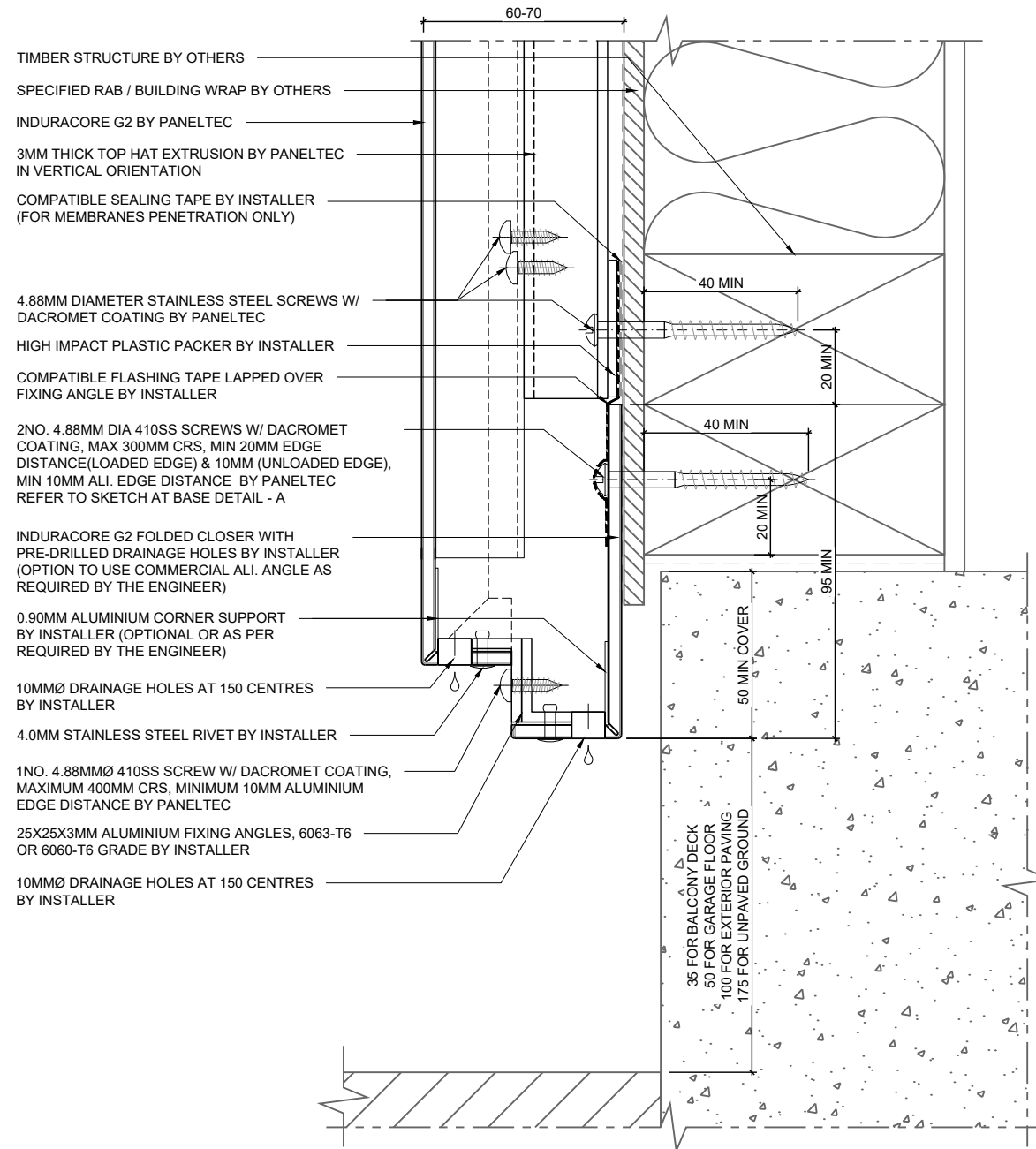


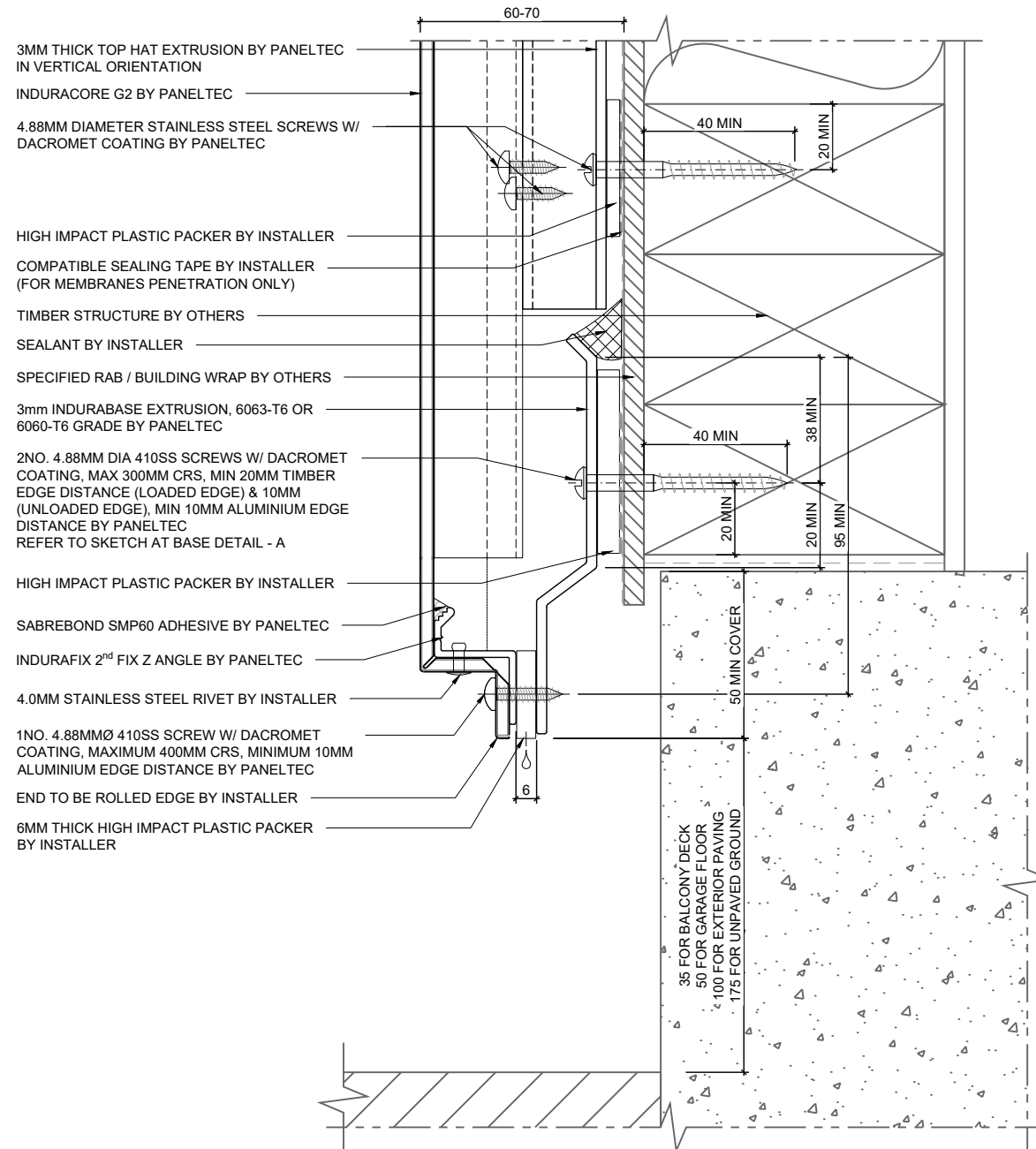


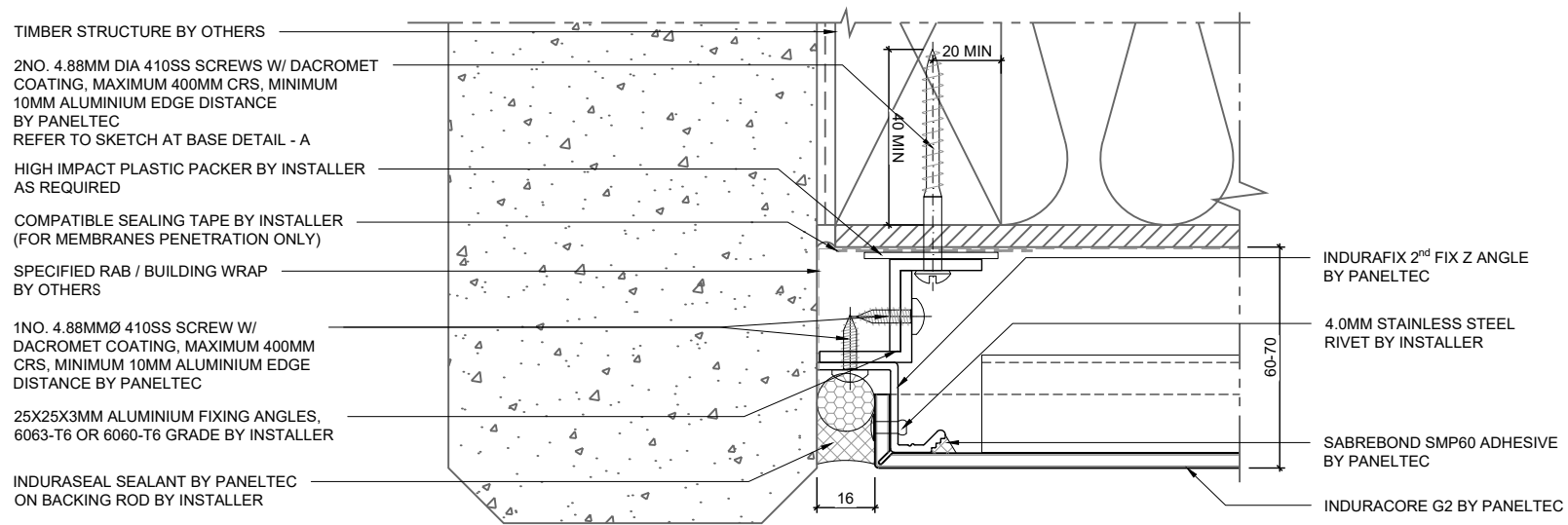


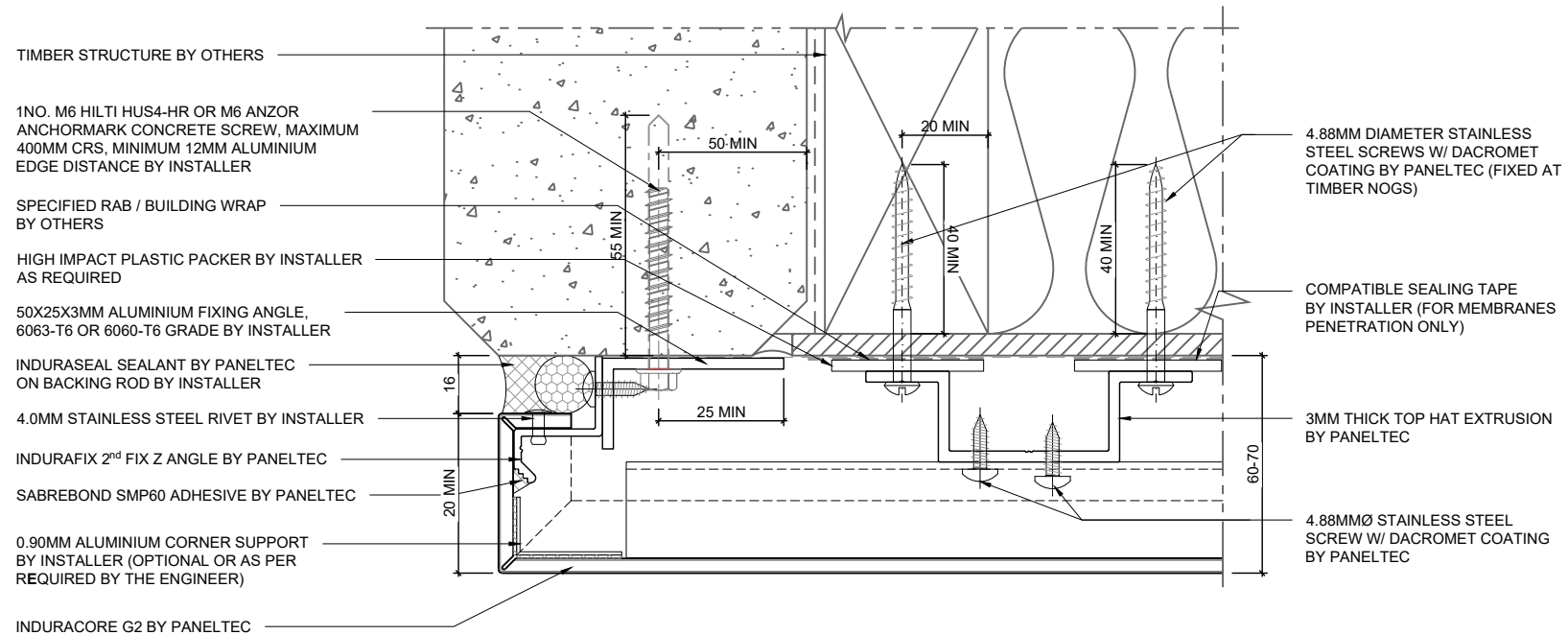


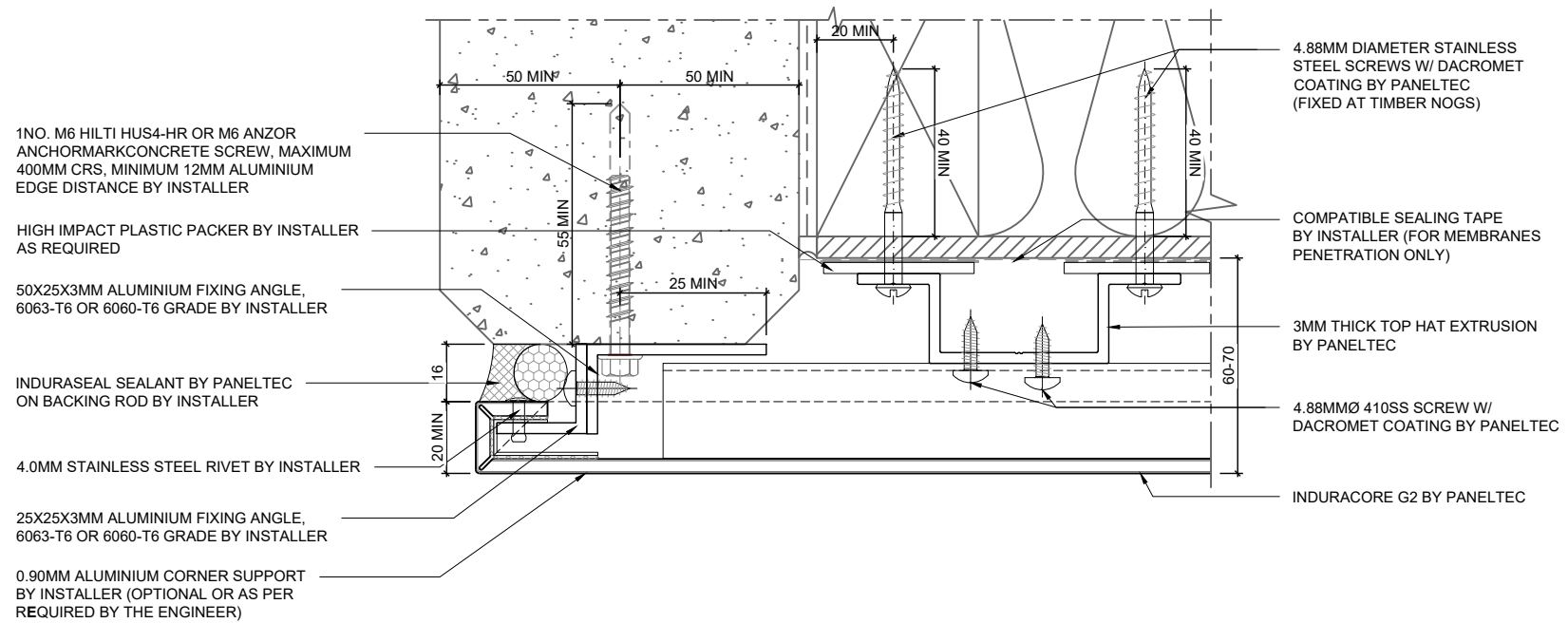


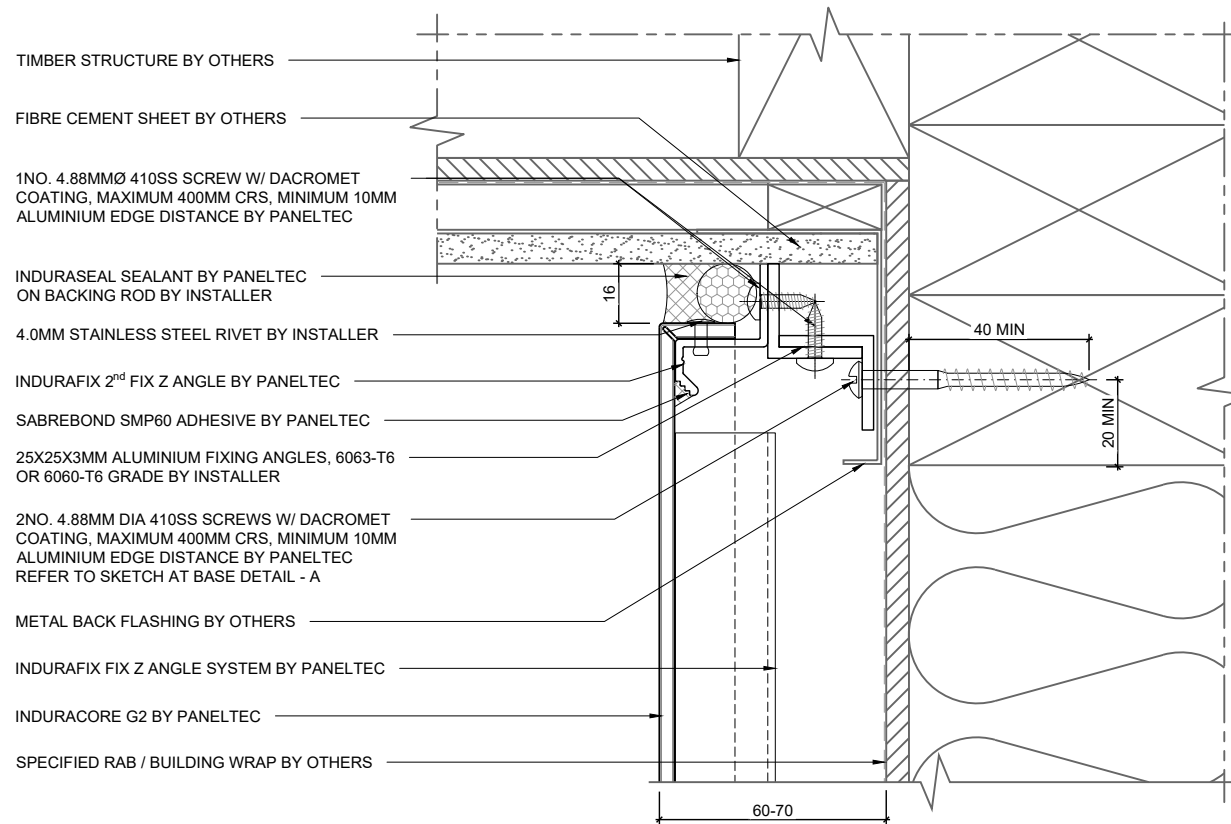


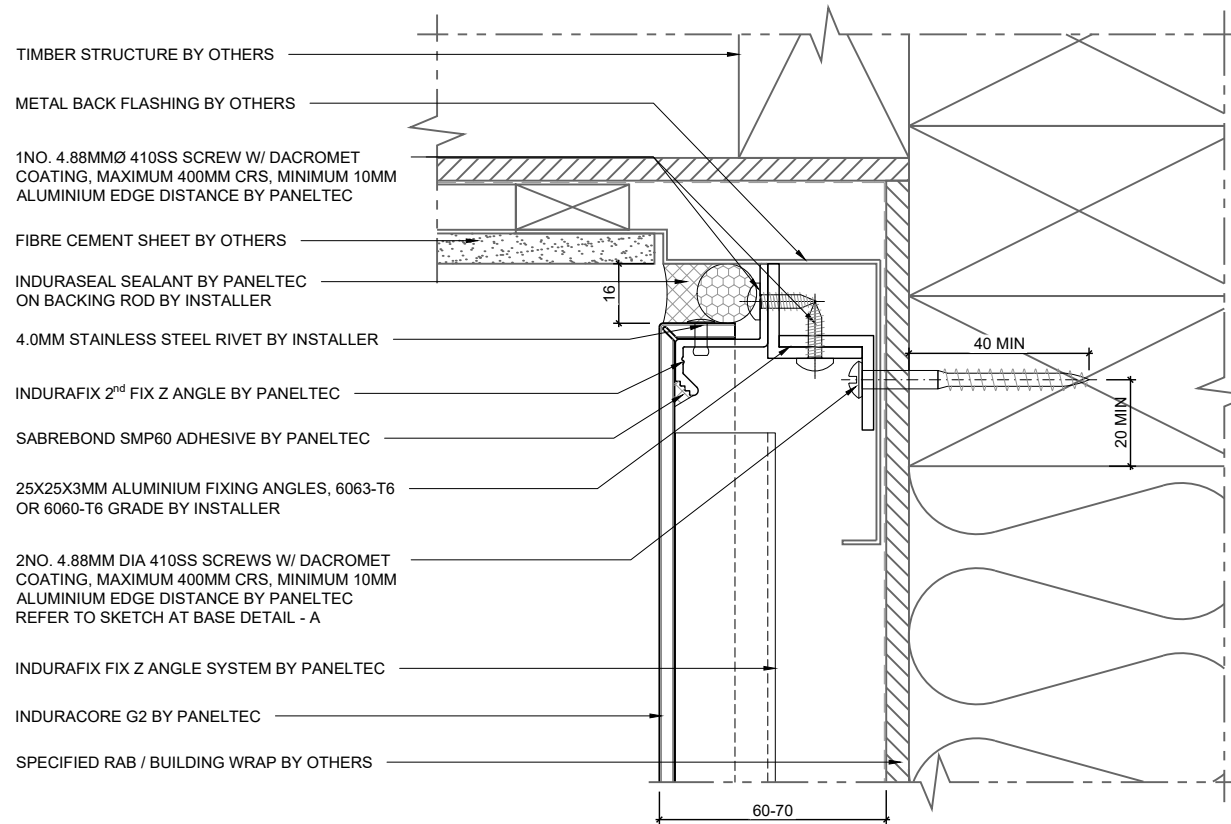


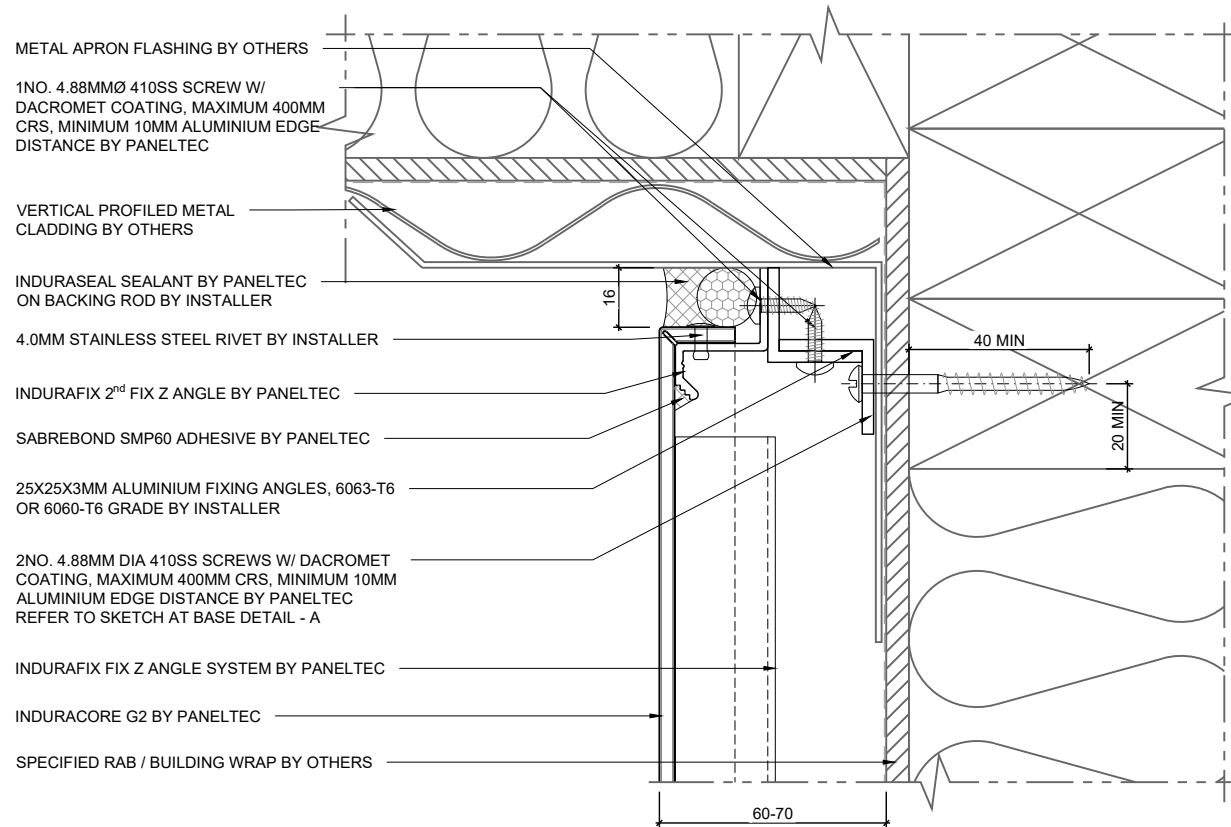


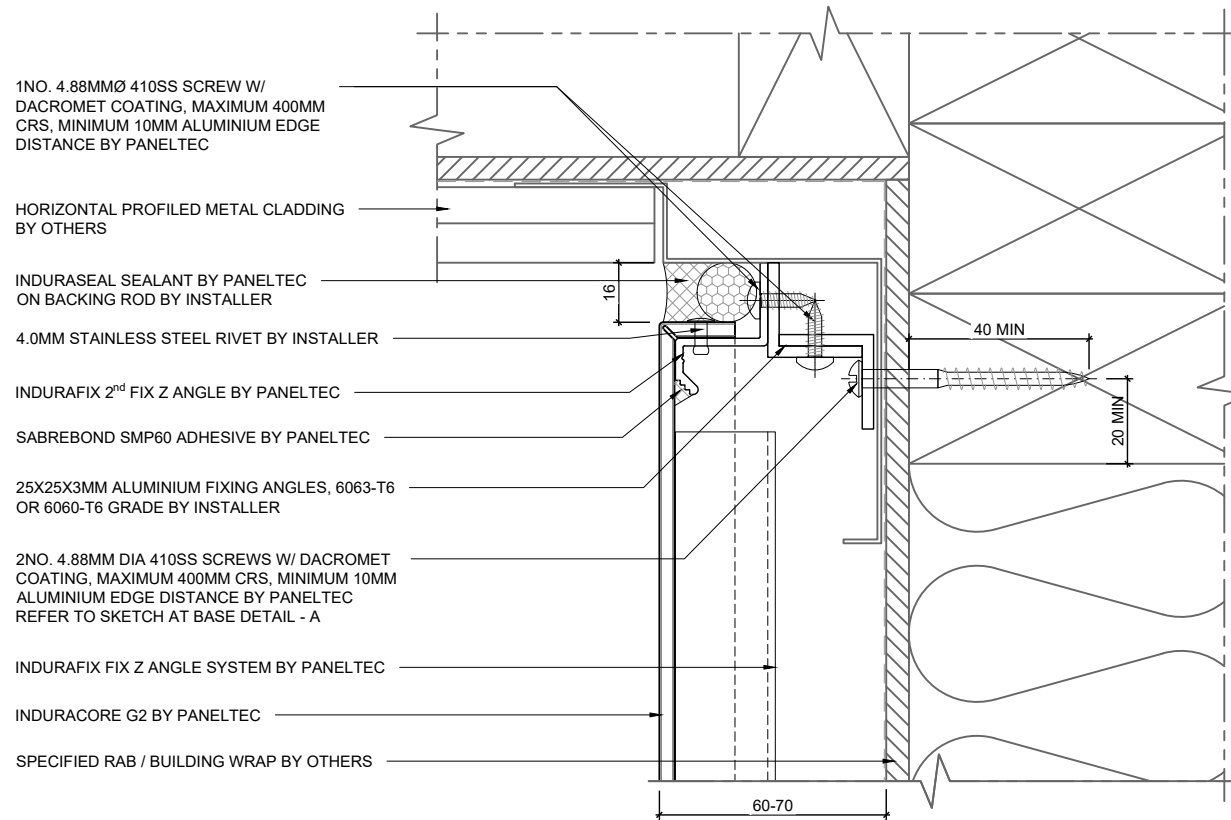


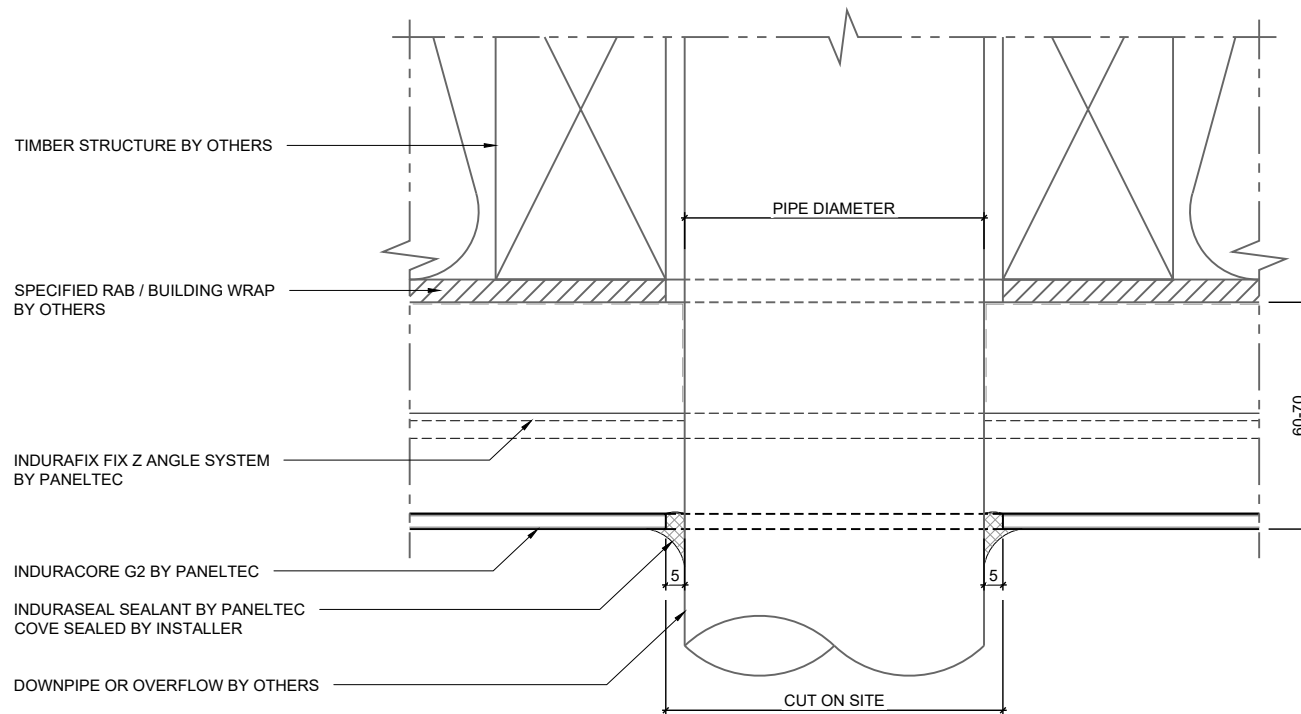


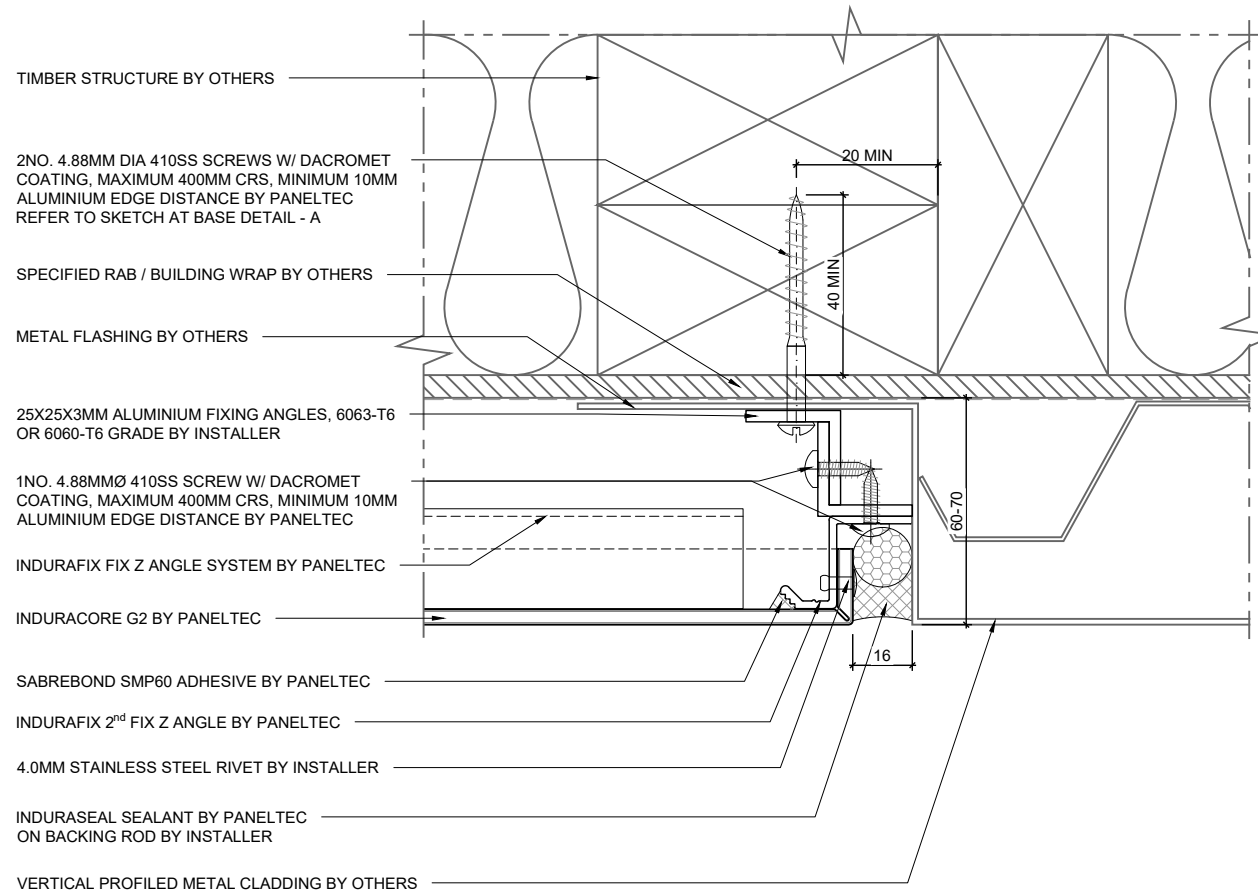


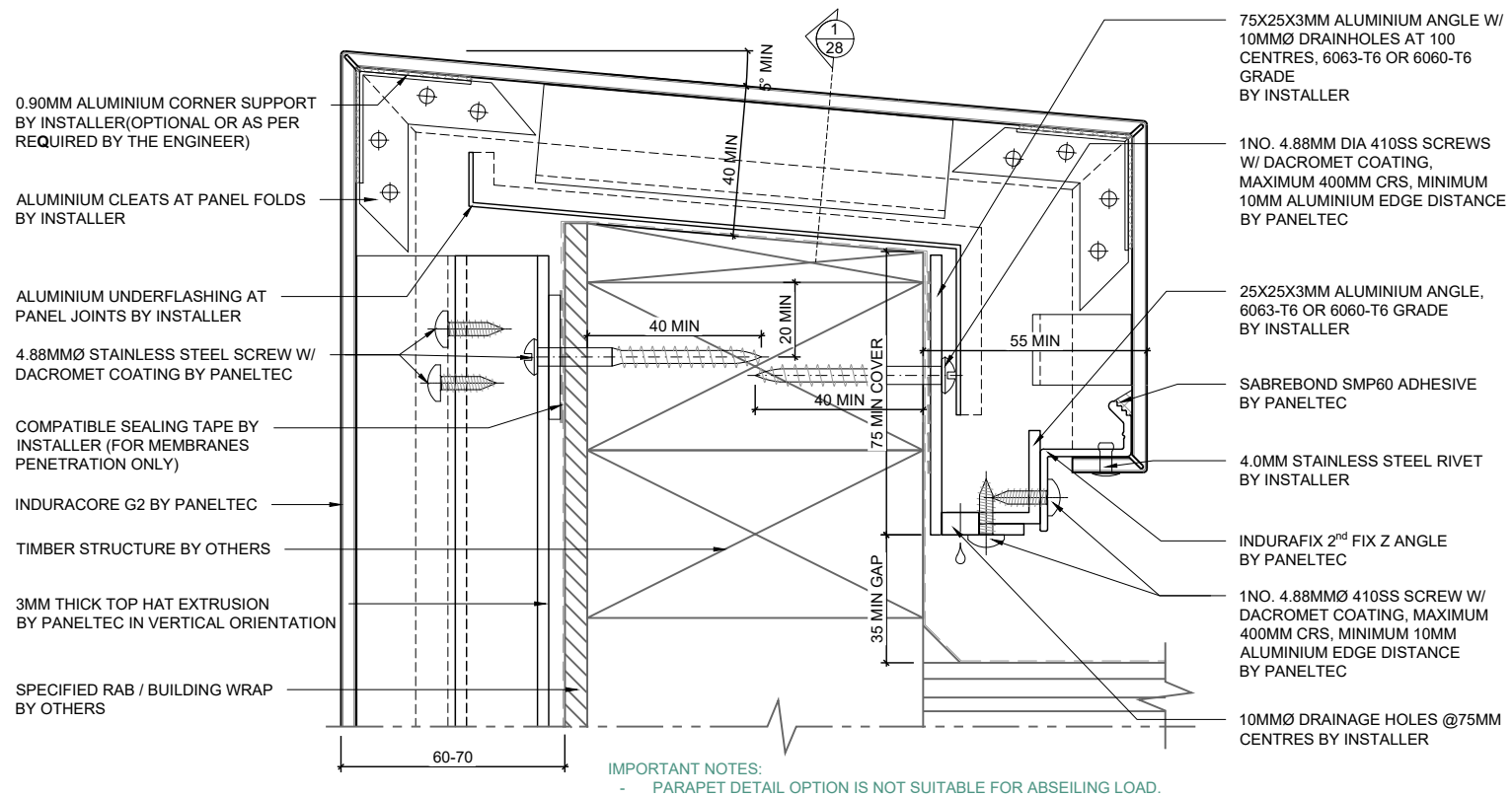


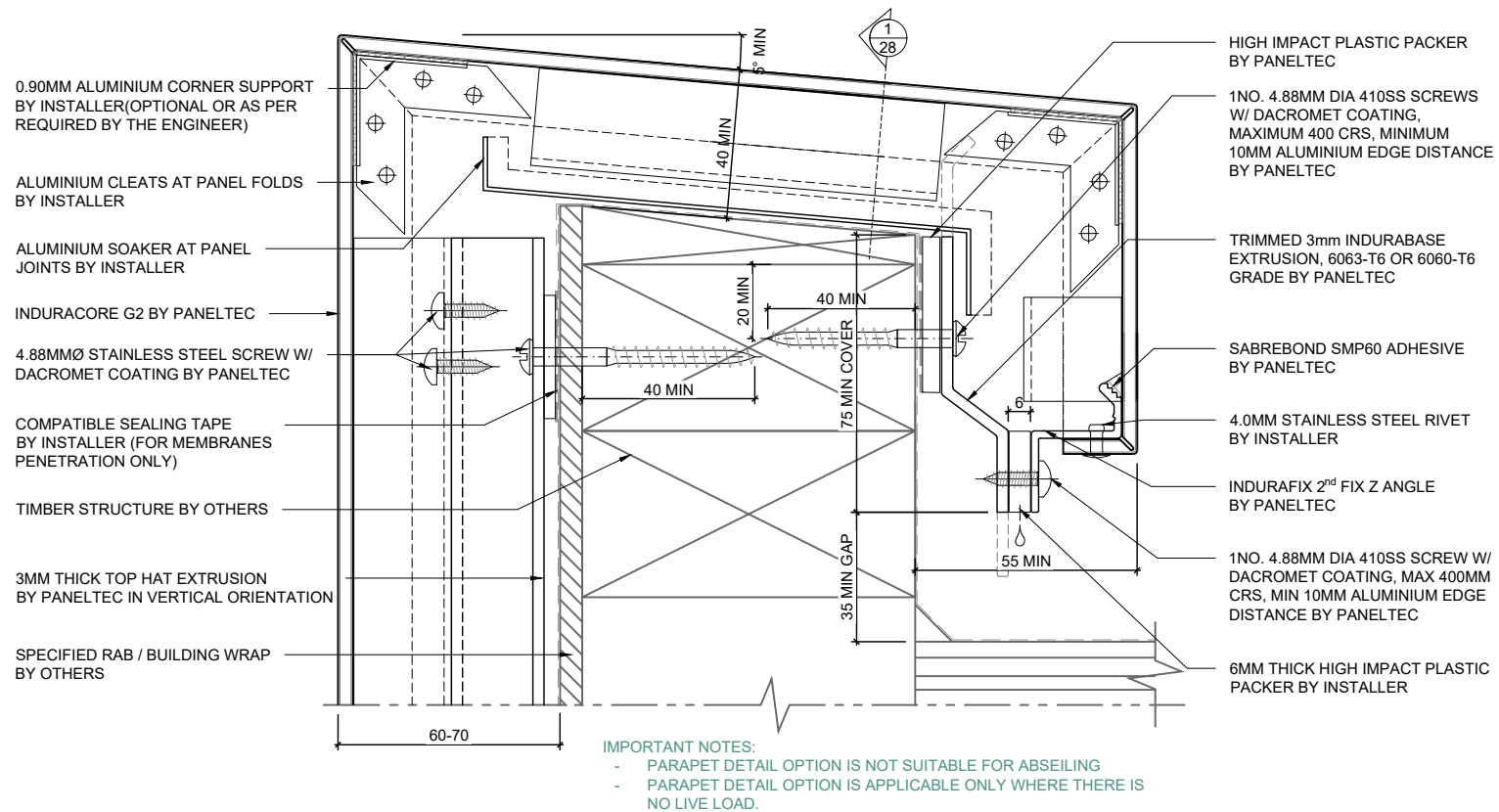


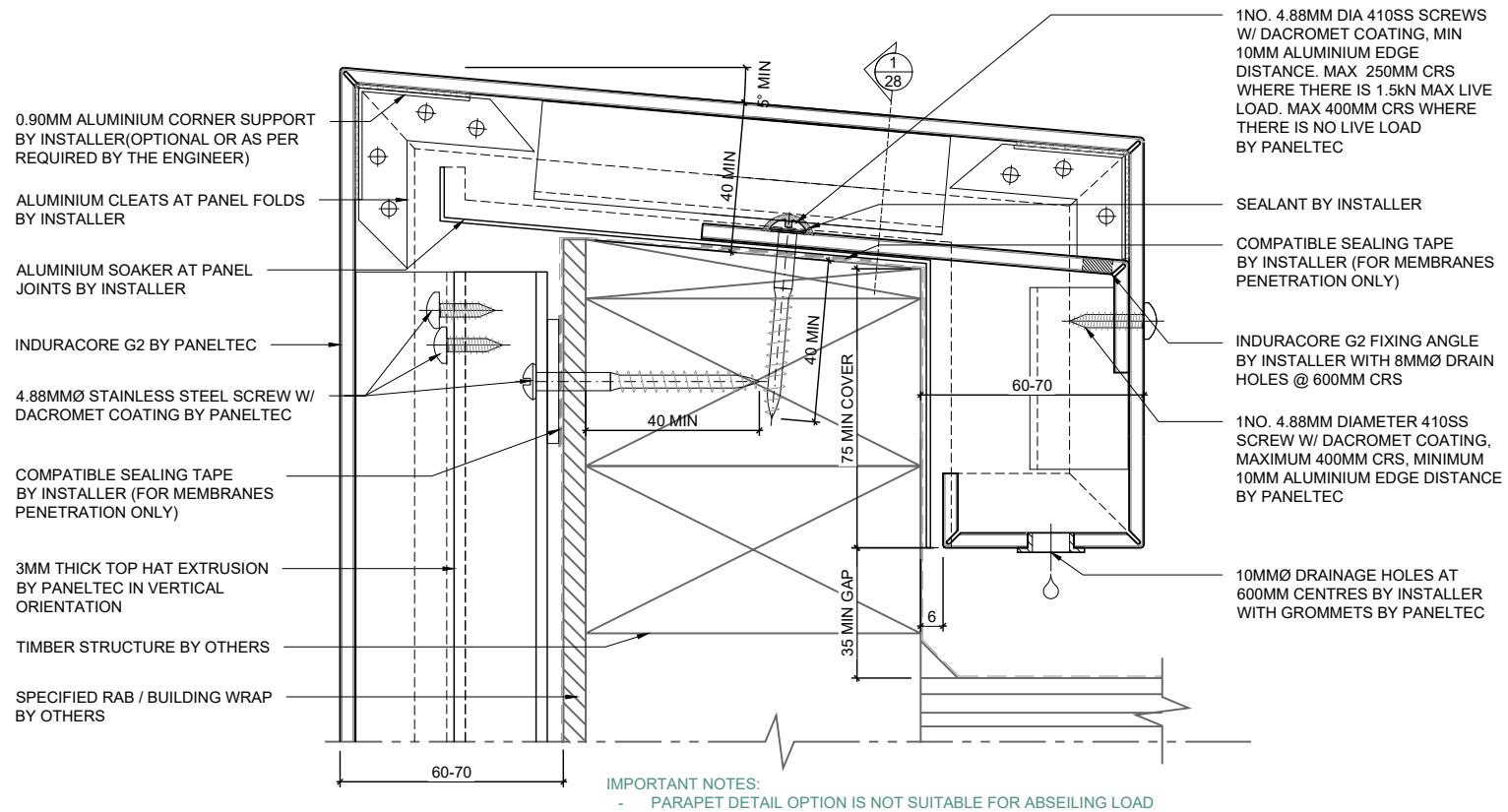


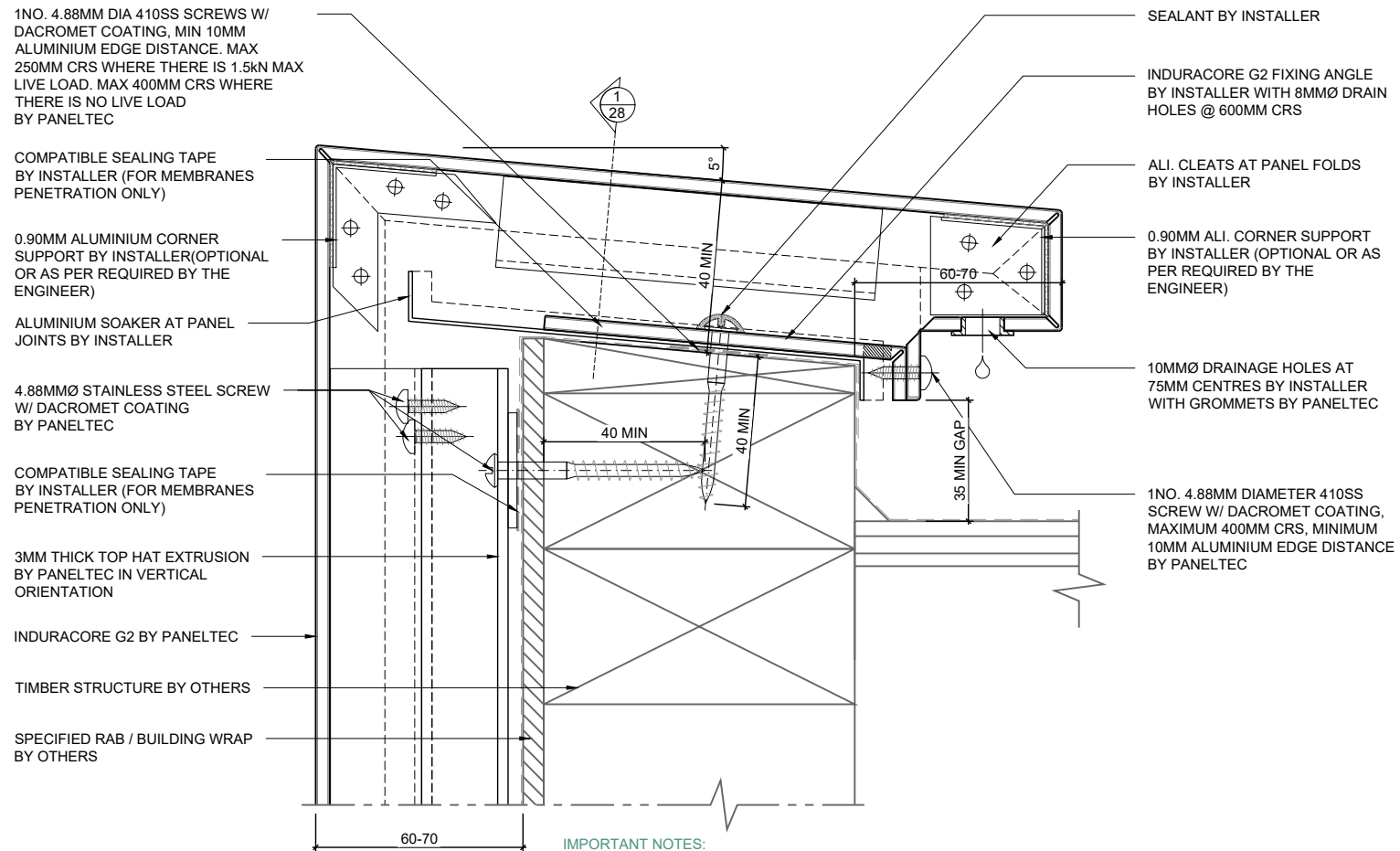






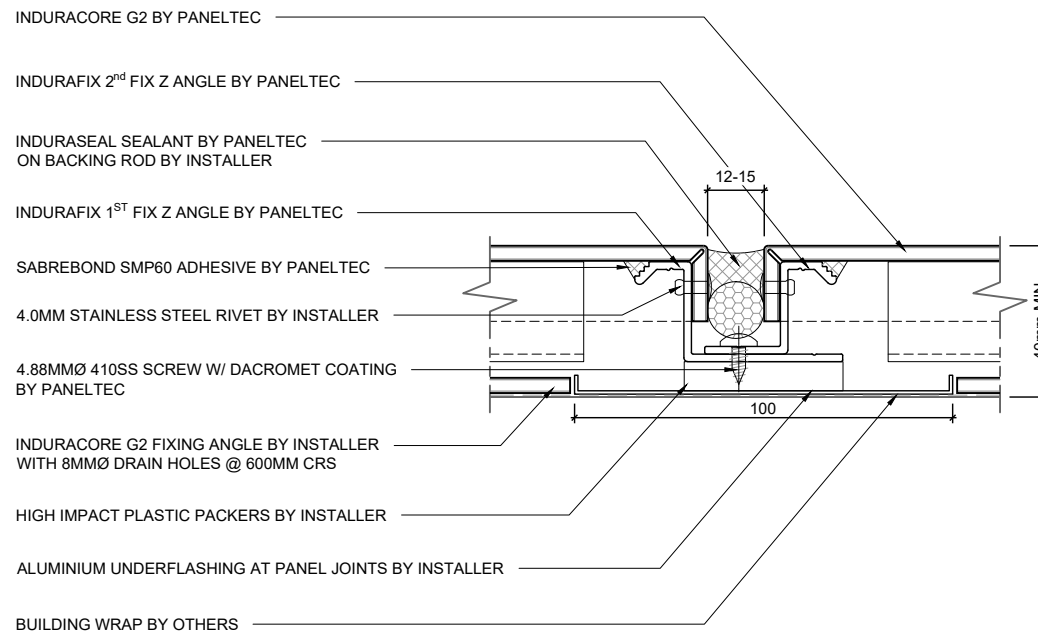


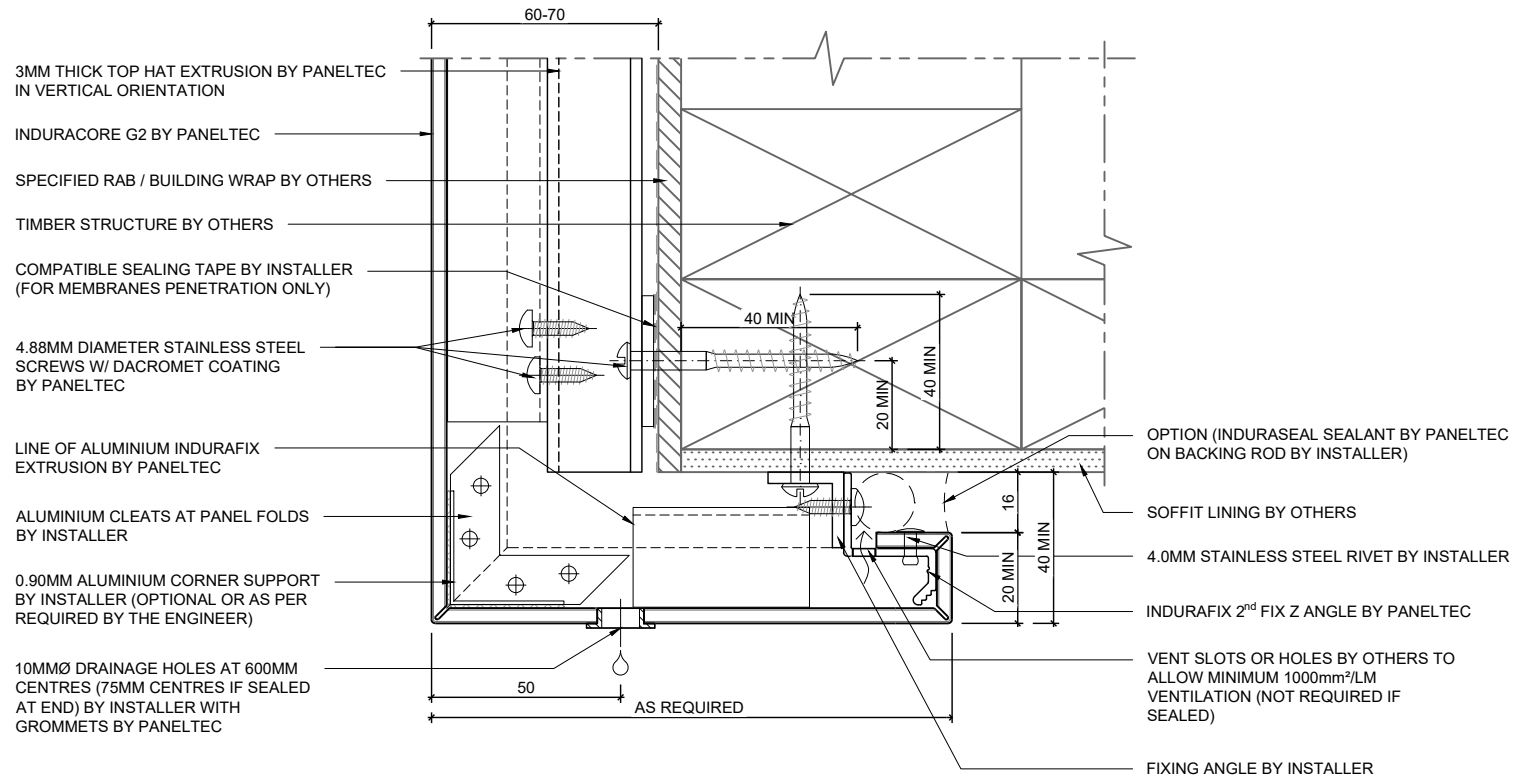




IMPORTANT NOTES:

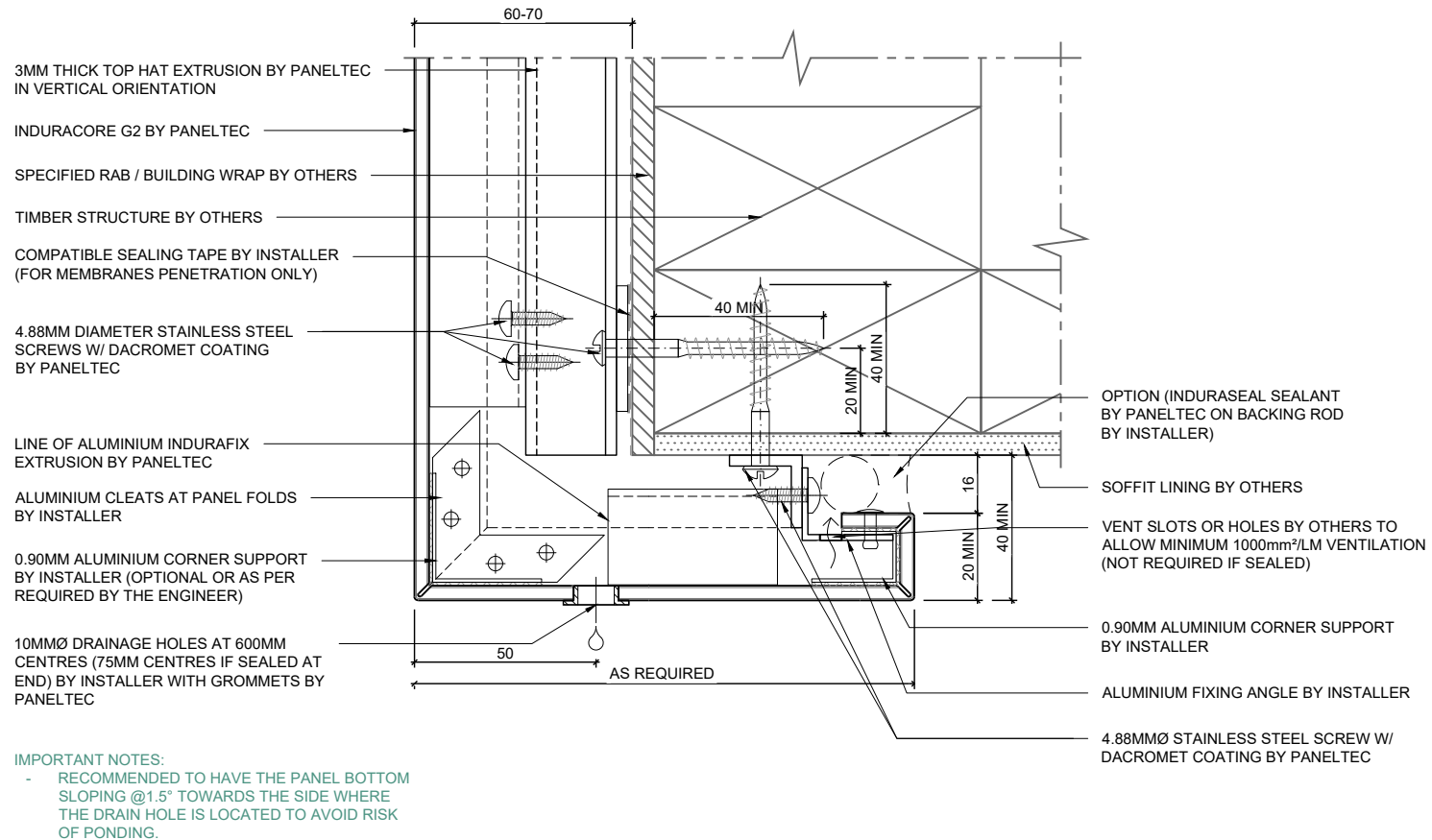
- PARAPET DETAIL OPTION IS NOT SUITABLE FOR ABSEILING LOAD.
- FOR LOW ROOF UPSTAND ONLY.
- THIS DETAIL DOES NOT COMPLY WITH THE BUILDING CODE REQUIREMENTS BUT MAY BE CONSIDERED AN ACCEPTABLE ALTERNATIVE SOLUTION.
- IT IS THE RESPONSIBILITY OF THE BUILDER OR ARCHITECT TO ENSURE THAT THIS DETAIL IS SATISFACTORY. SPECIFIC INSTRUCTIONS ARE REQUIRED FOR ITS IMPLEMENTATION.

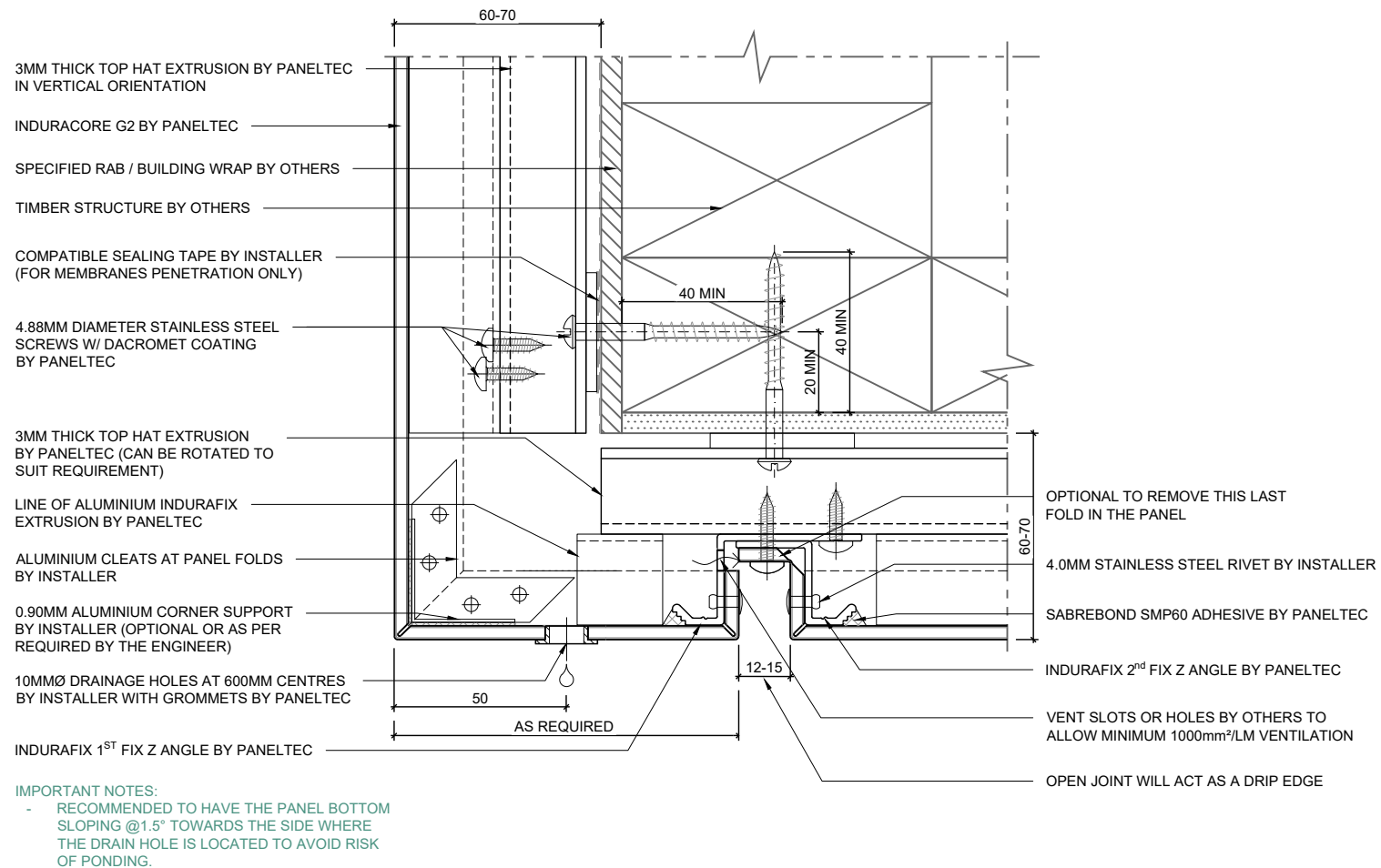


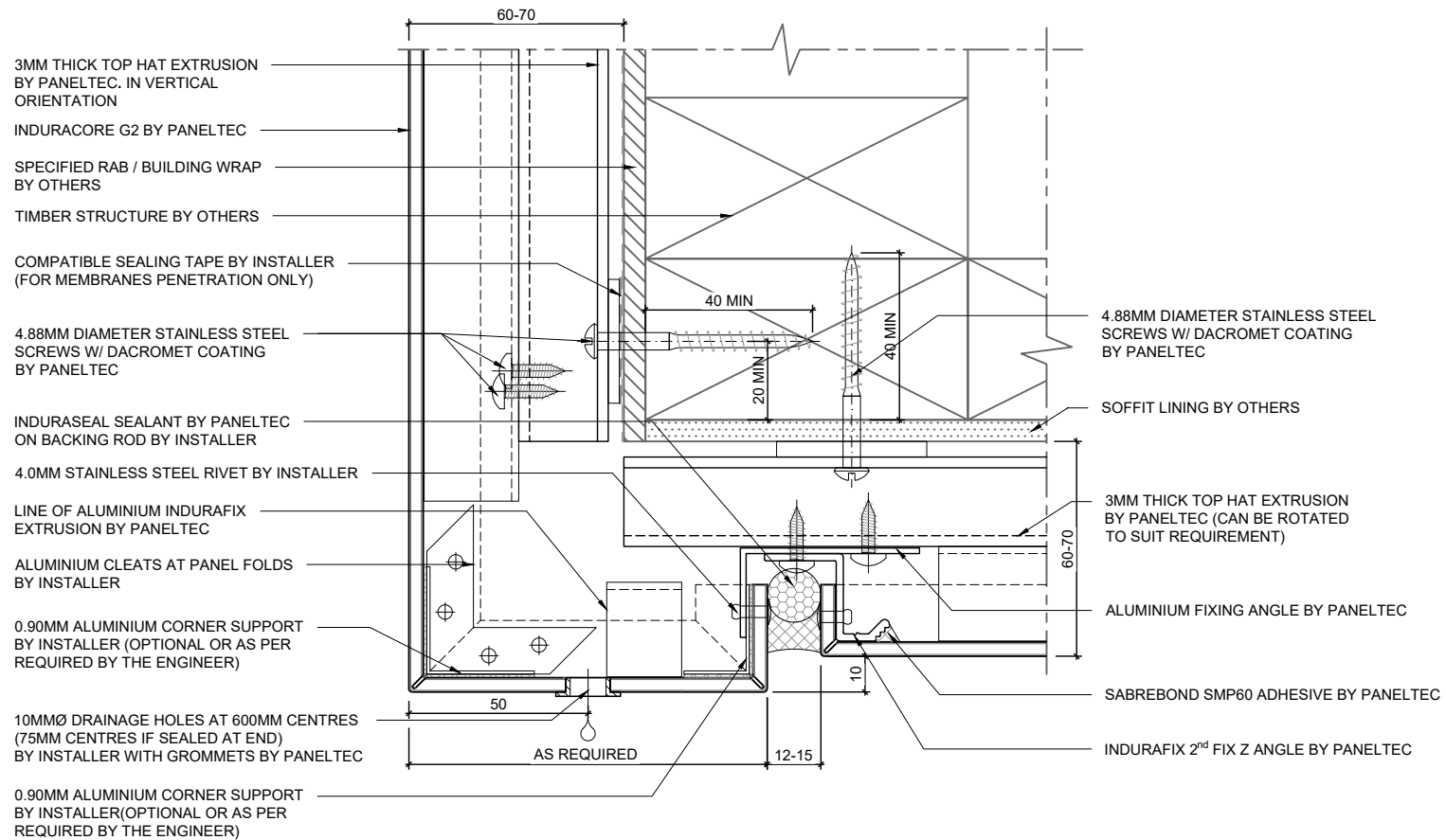


IMPORTANT NOTES:

- RECOMMENDED TO HAVE THE PANEL BOTTOM SLOPING @1.5° TOWARDS THE SIDE WHERE THE DRAIN HOLE IS LOCATED TO AVOID RISK OF PONDING.

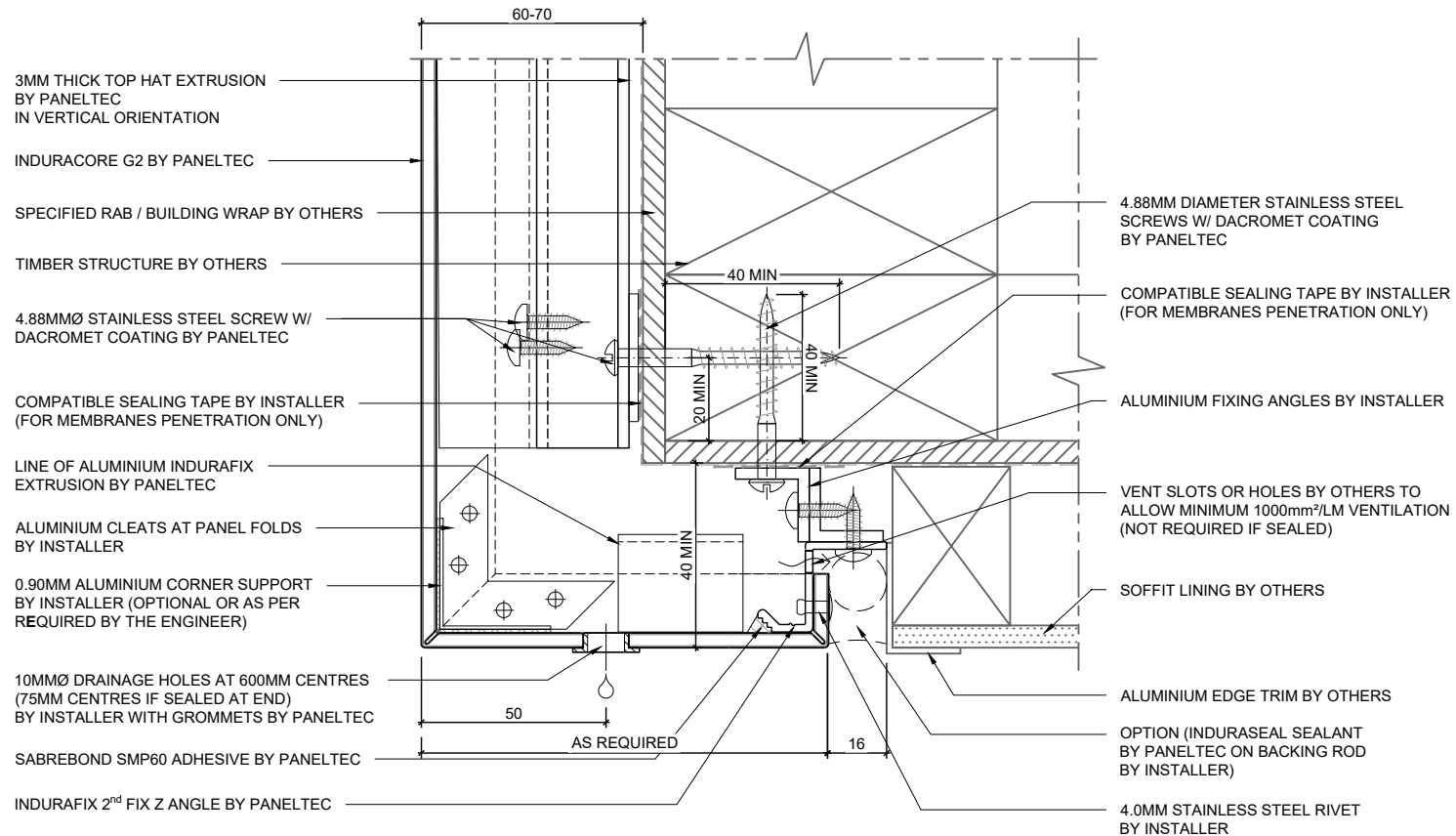






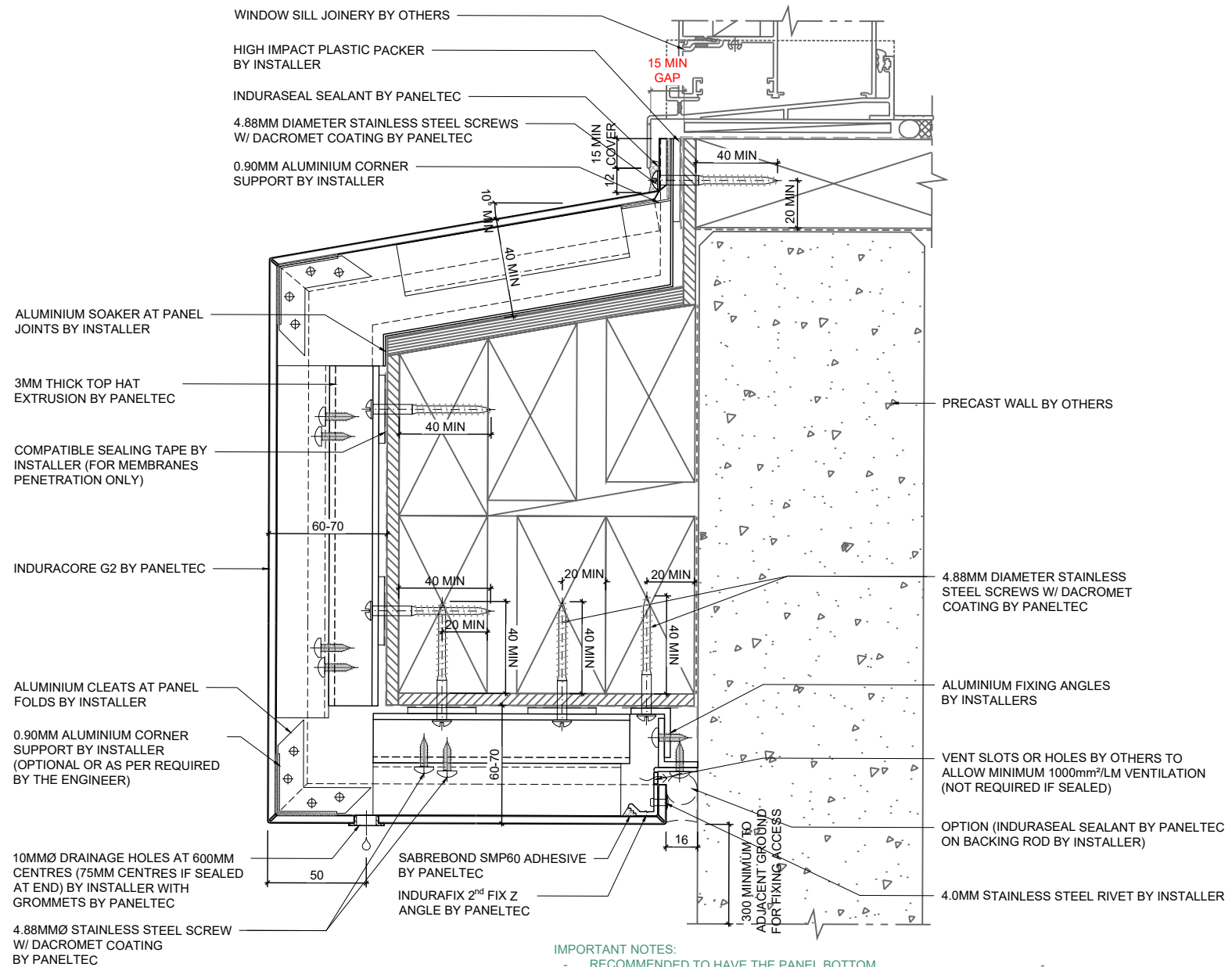
IMPORTANT NOTES:

- RECOMMENDED TO HAVE THE PANEL BOTTOM SLOPING @1.5° TOWARDS THE SIDE WHERE THE DRAIN HOLE IS LOCATED TO AVOID RISK OF PONDING.

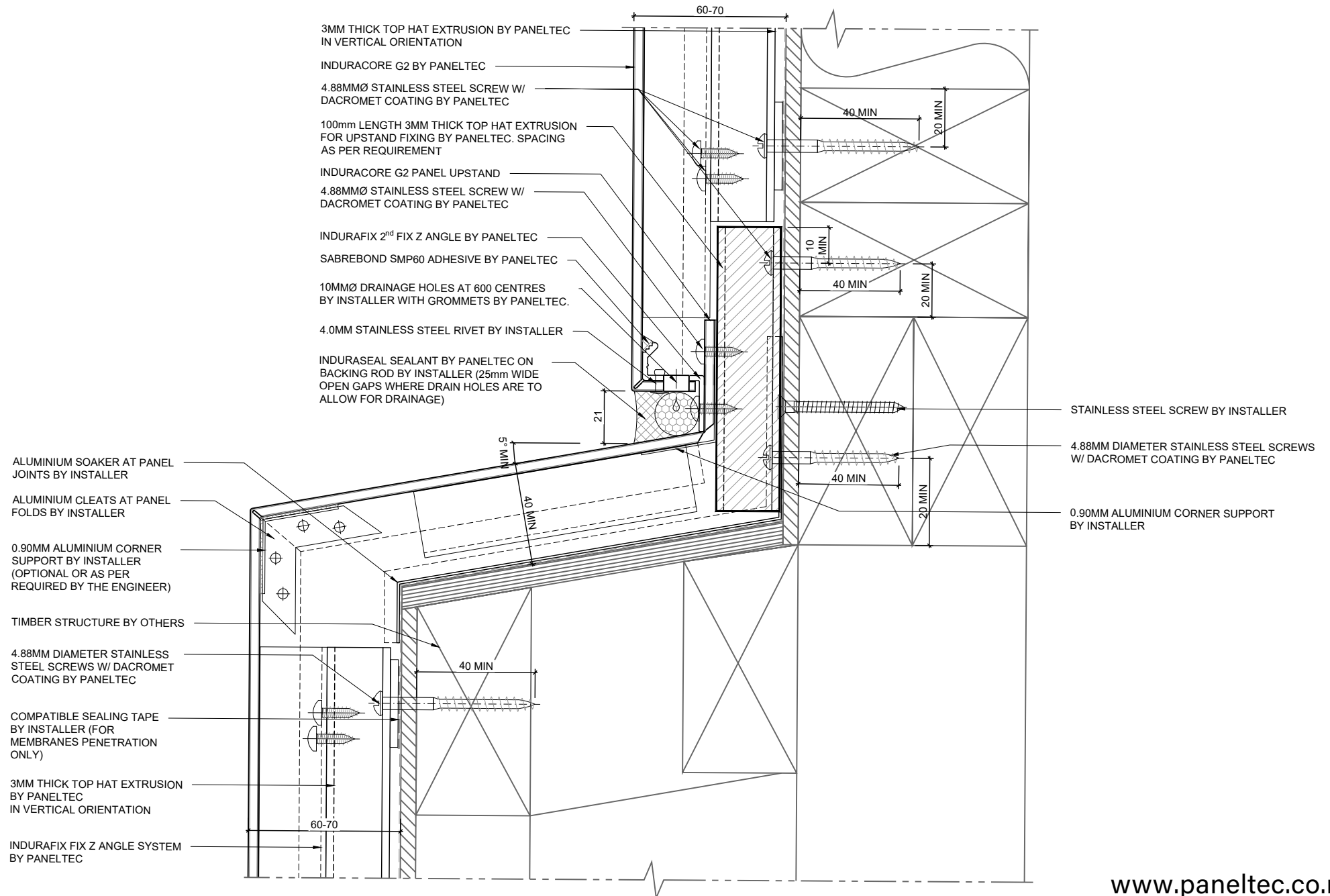


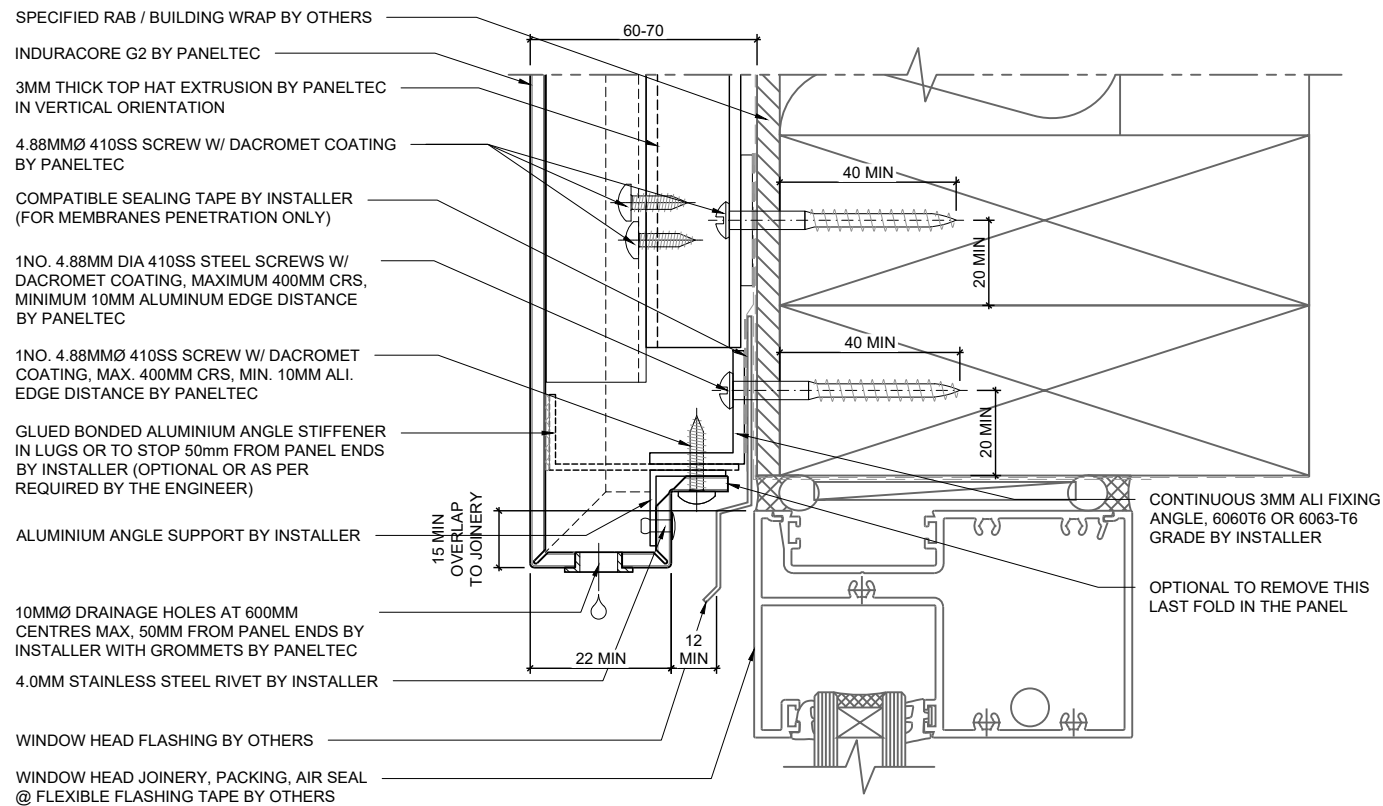
IMPORTANT NOTES:

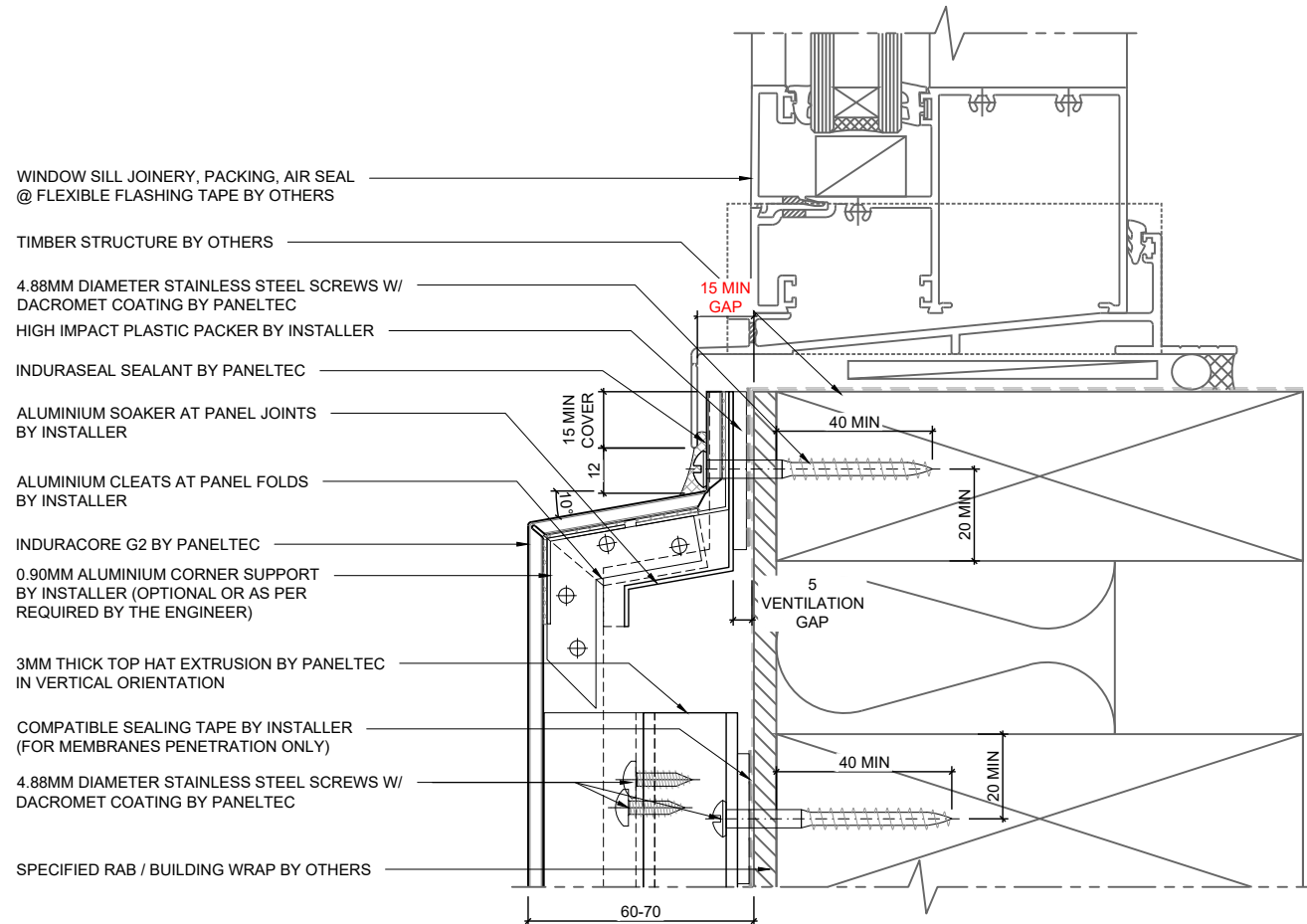
- RECOMMENDED TO HAVE THE PANEL BOTTOM SLOPING @1.5° TOWARDS THE SIDE WHERE THE DRAIN HOLE IS LOCATED TO AVOID RISK OF PONDING.

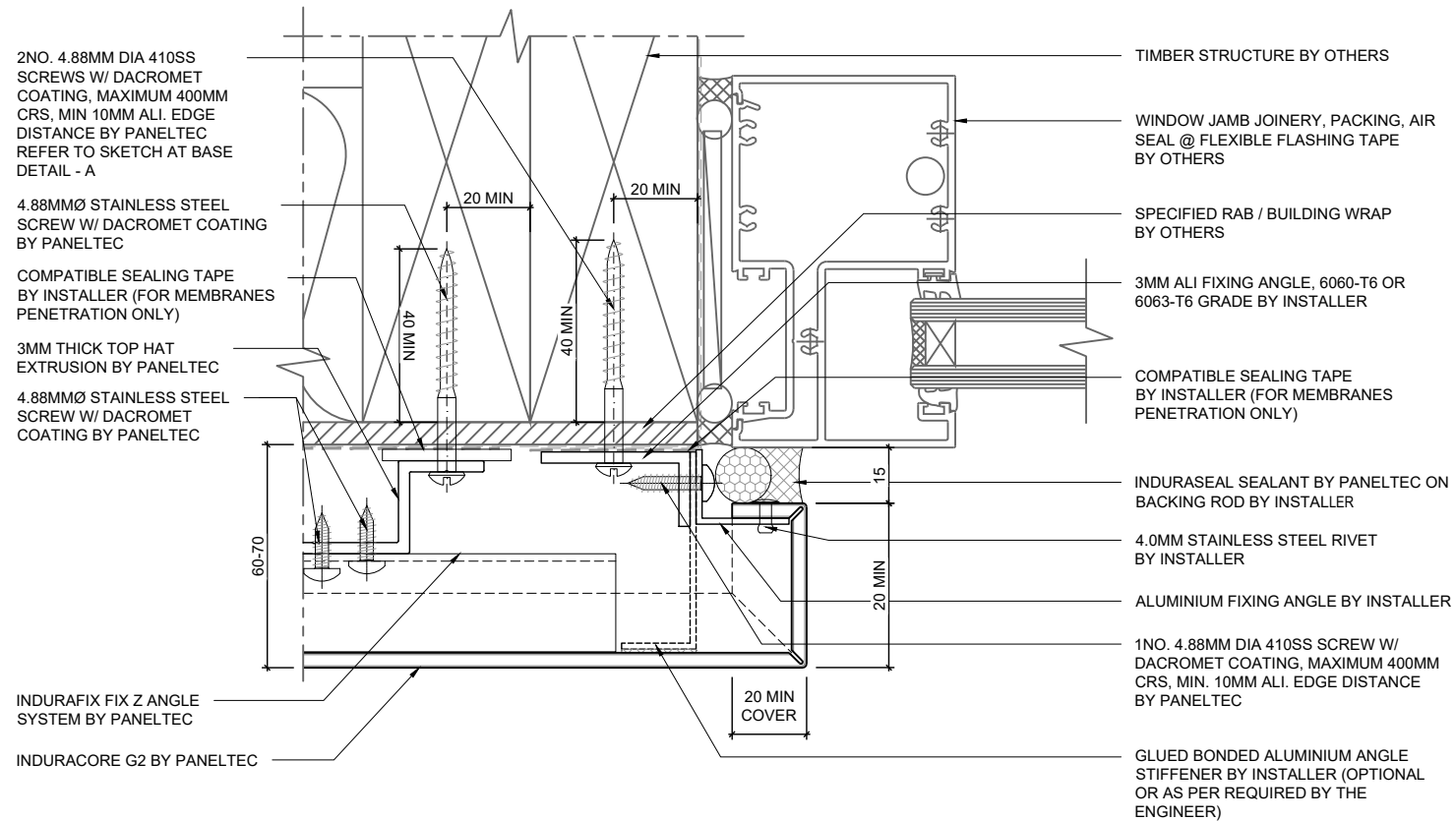


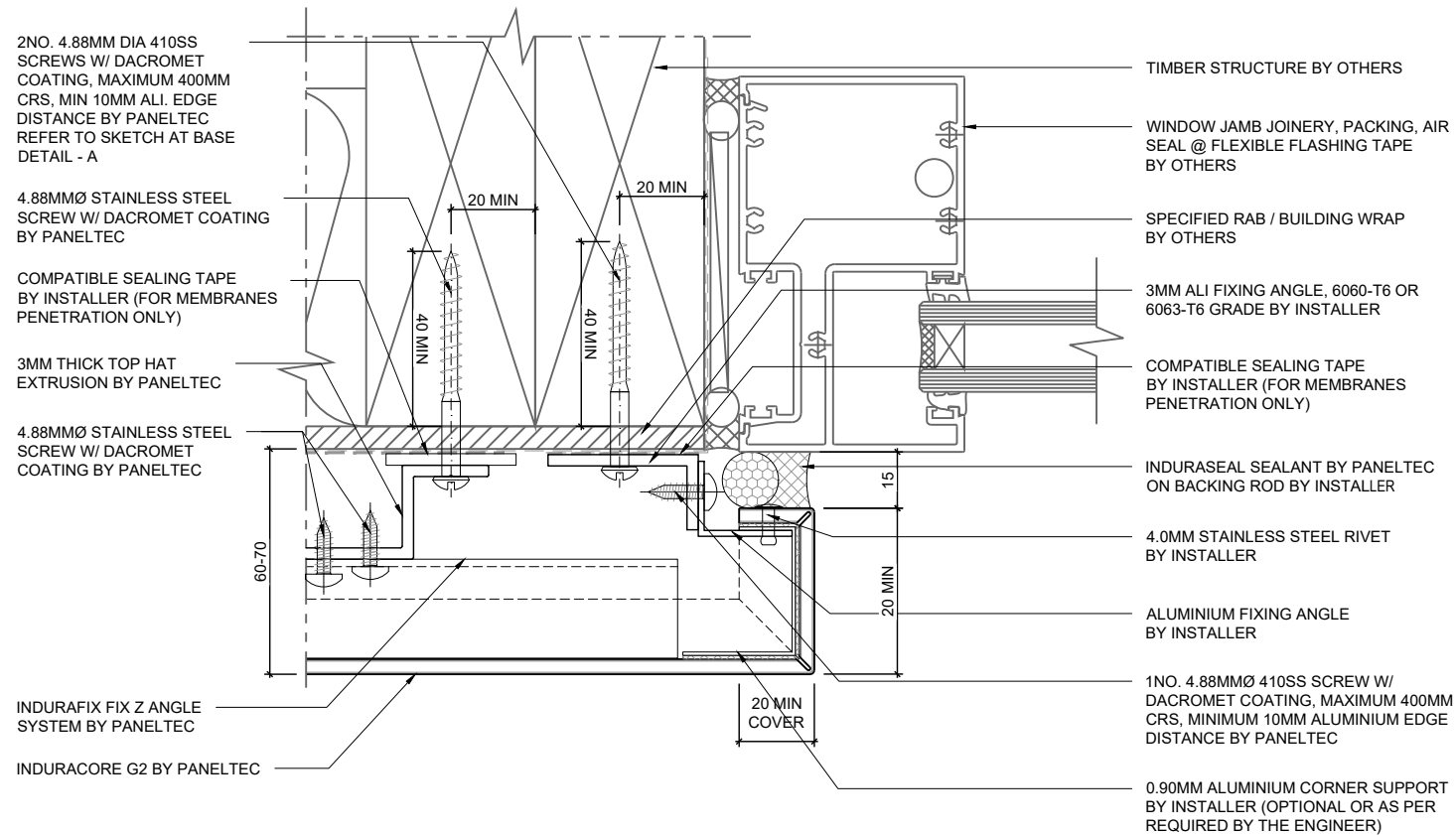
IMPORTANT NOTES:
 - RECOMMENDED TO HAVE THE PANEL BOTTOM SLOPING @1.5° TOWARDS THE SIDE WHERE THE DRAIN HOLE IS LOCATED TO AVOID RISK OF PONDING.

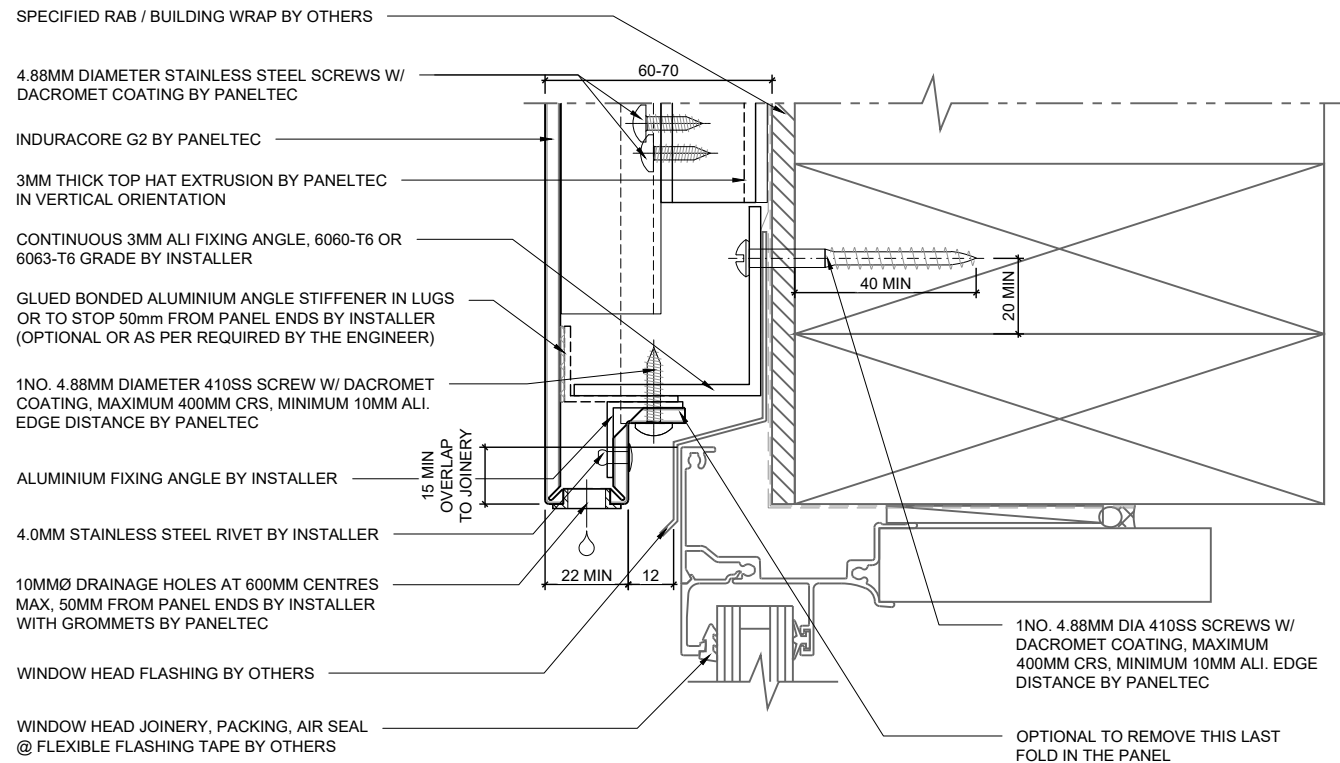


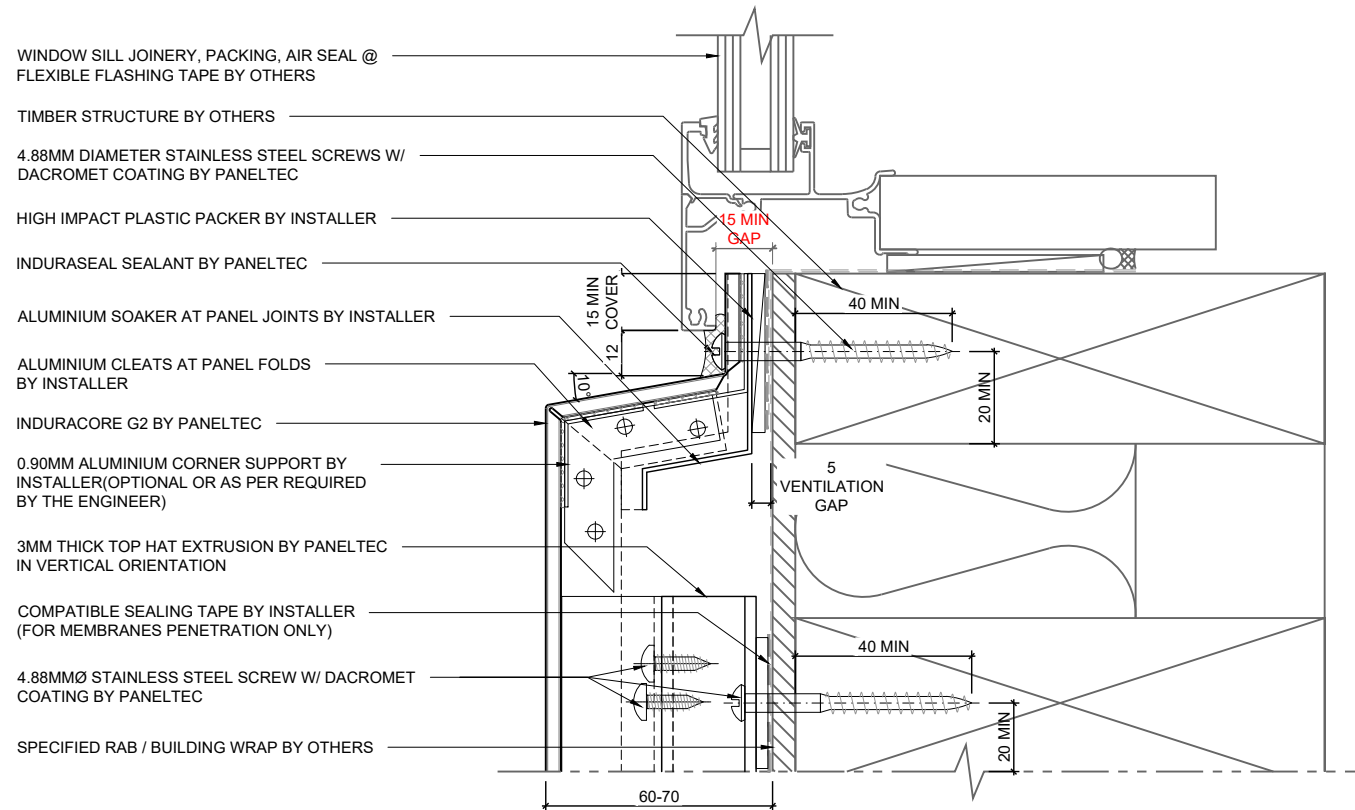


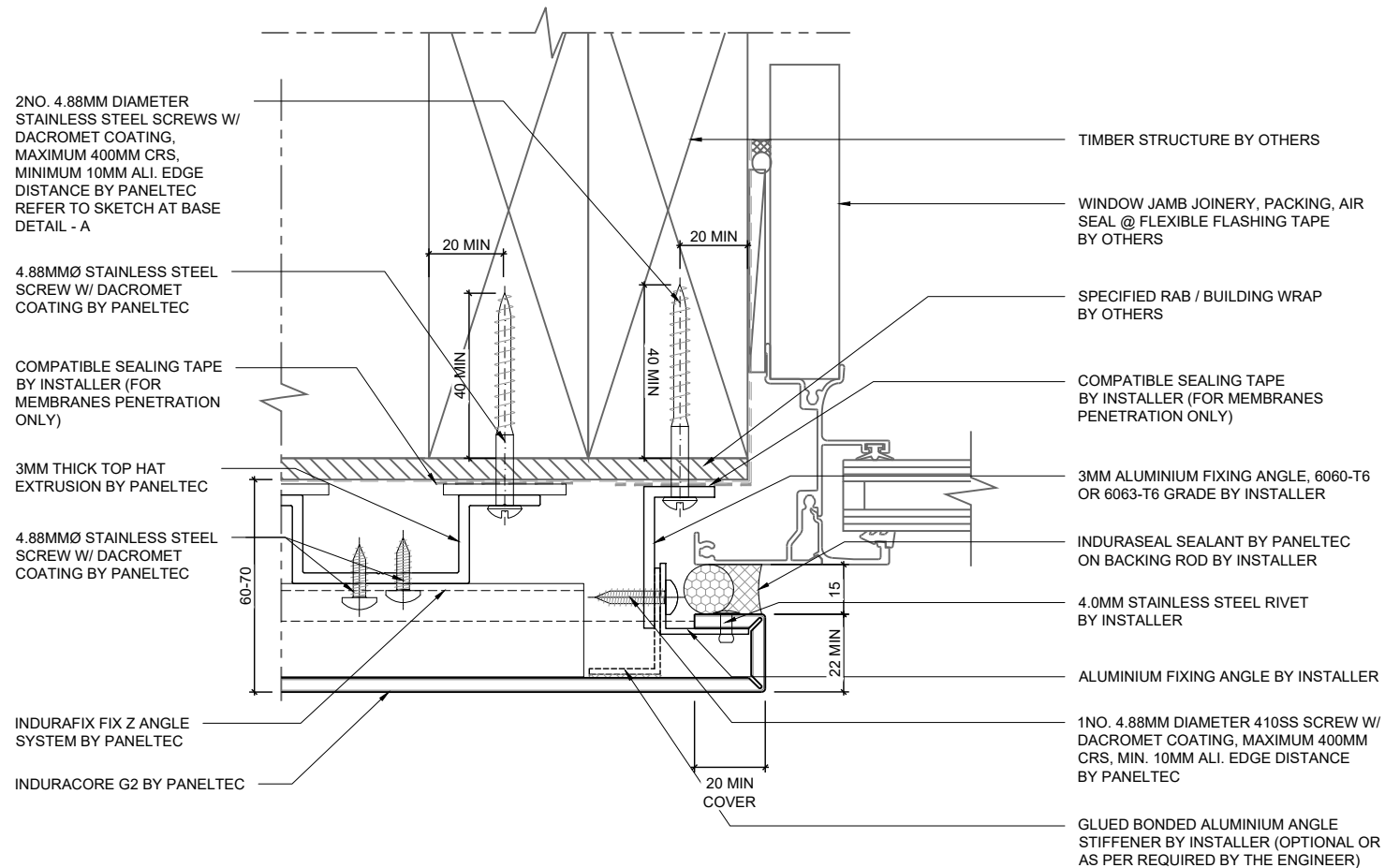


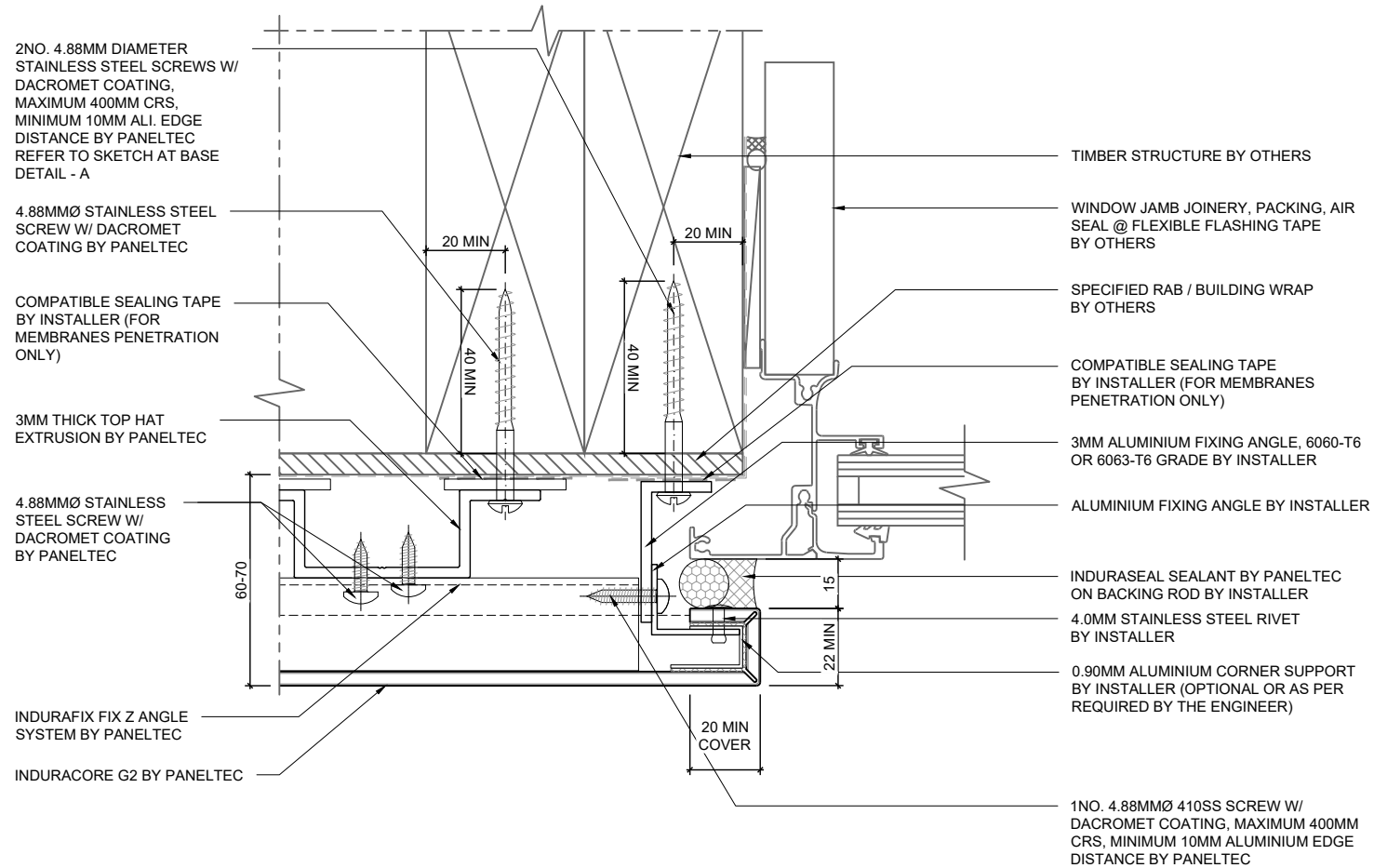


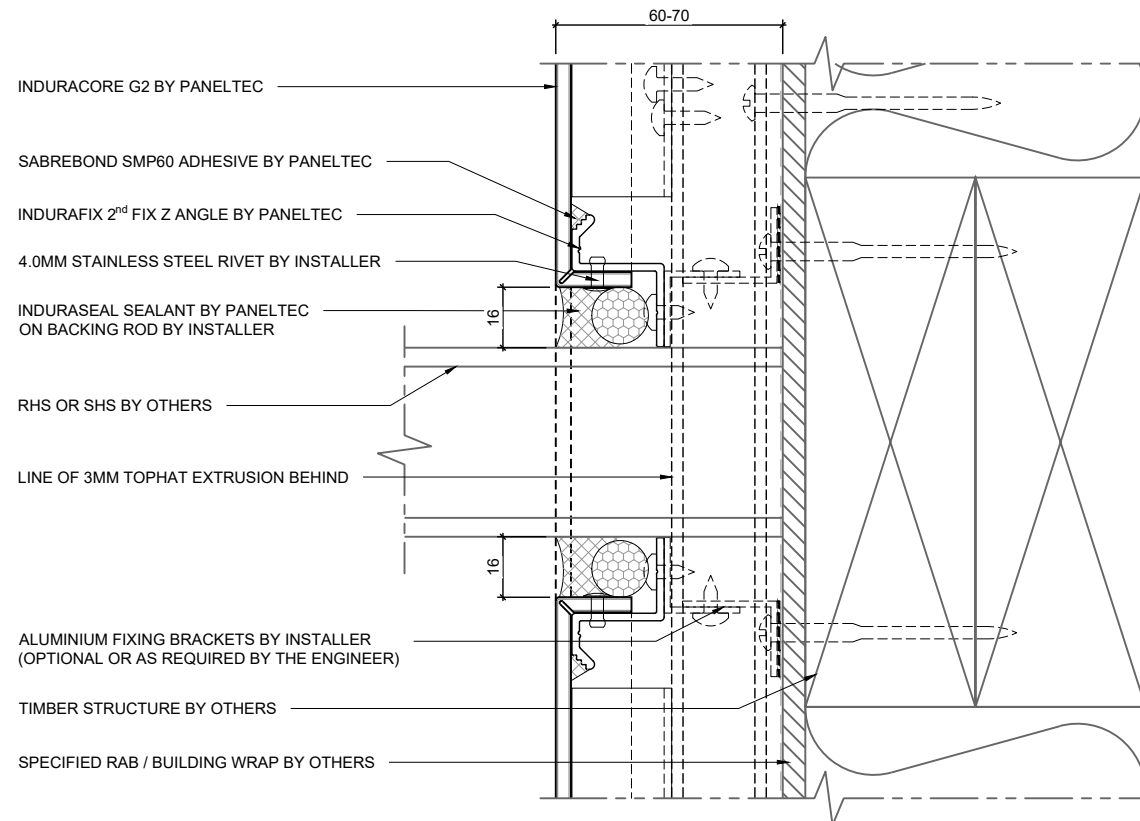


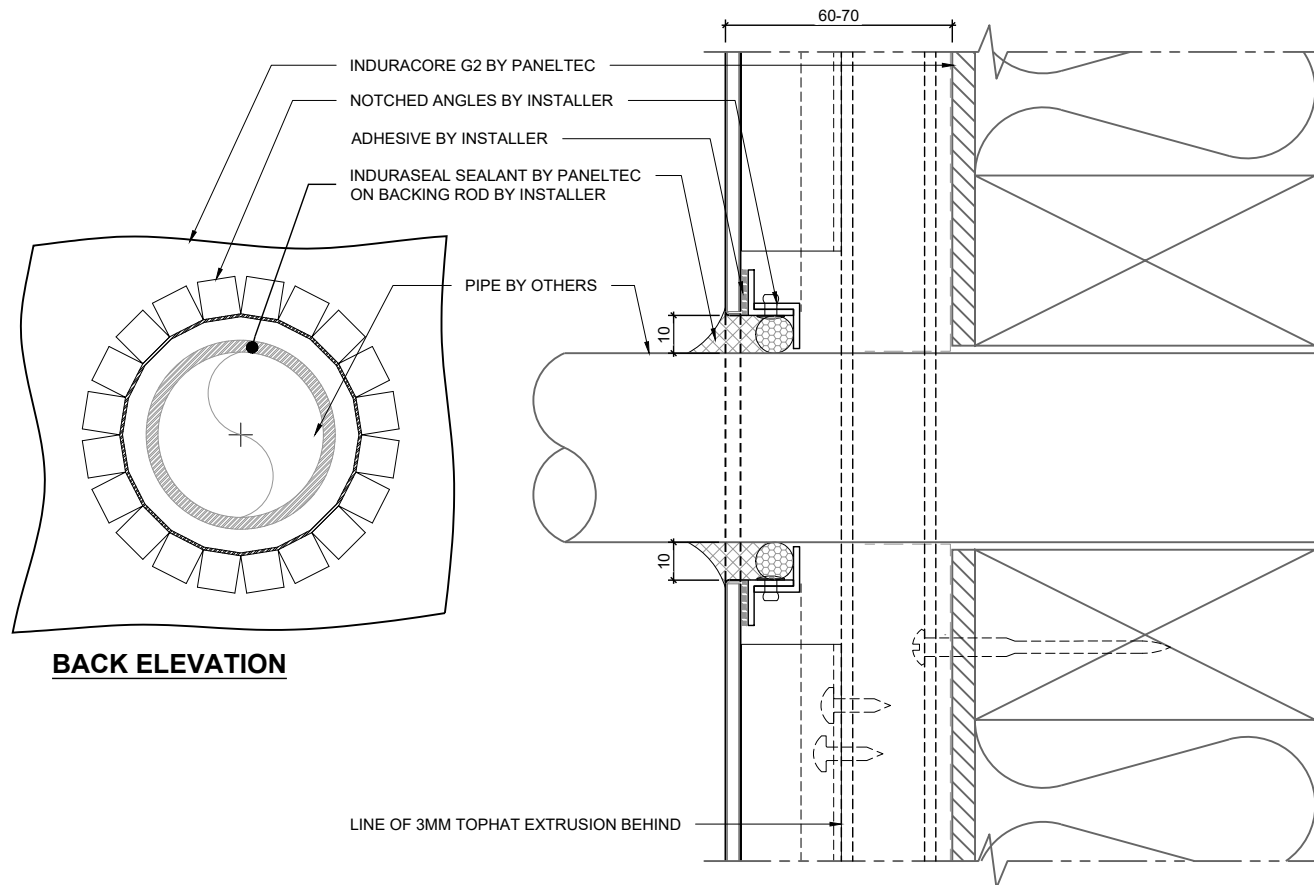


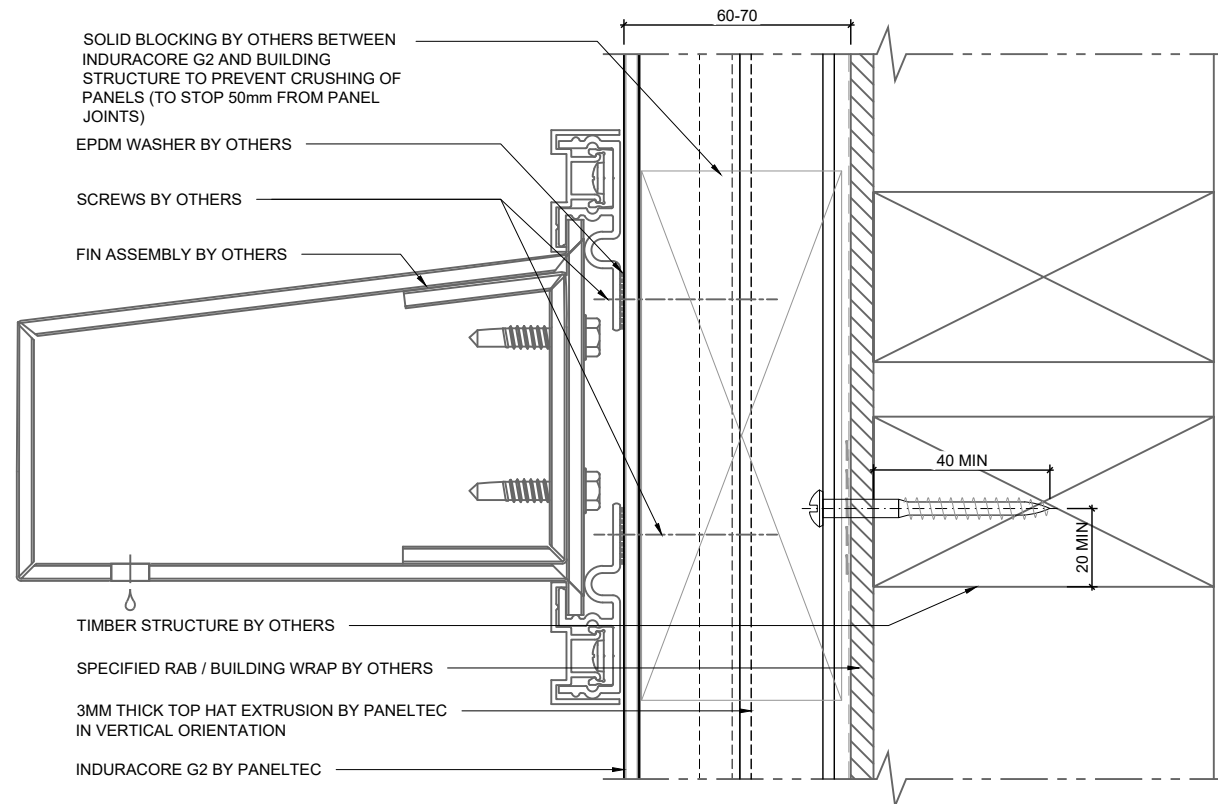


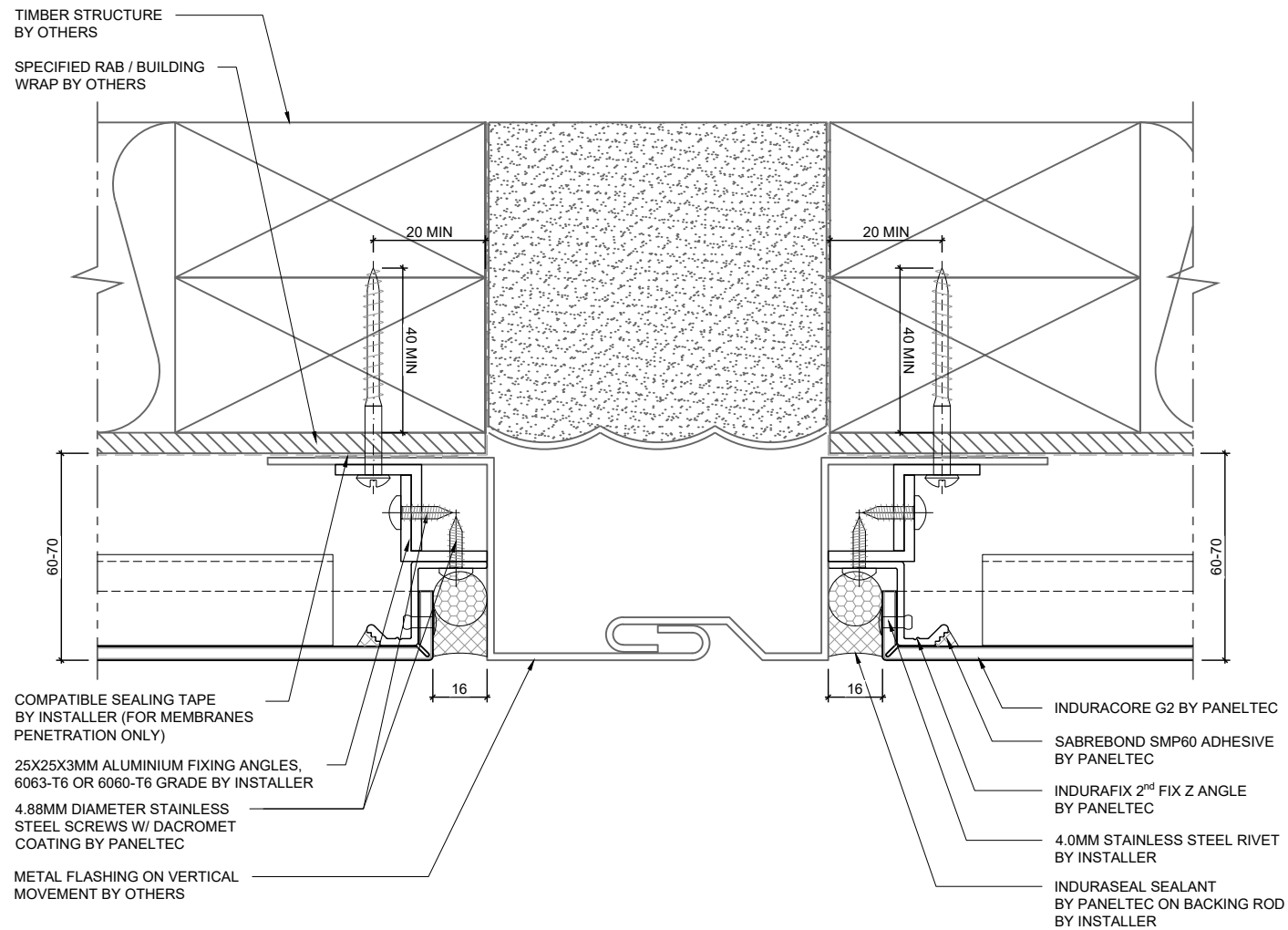


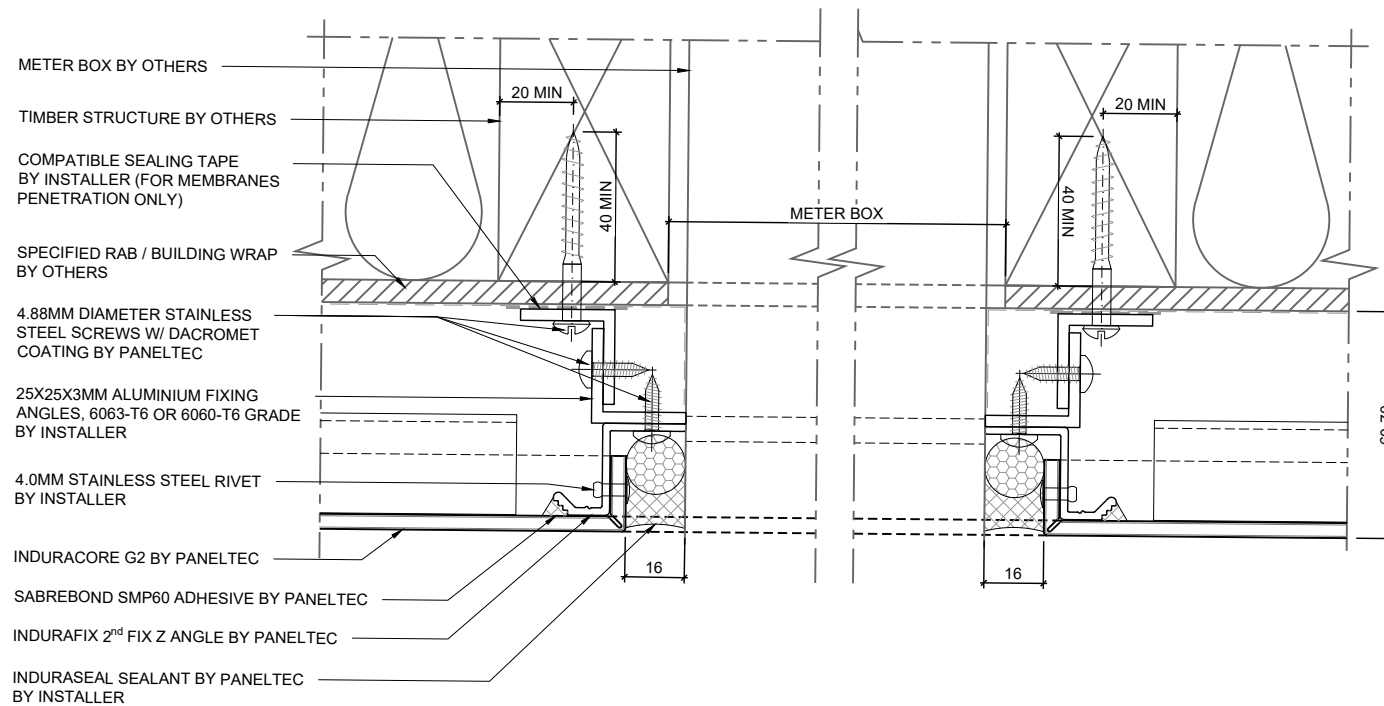


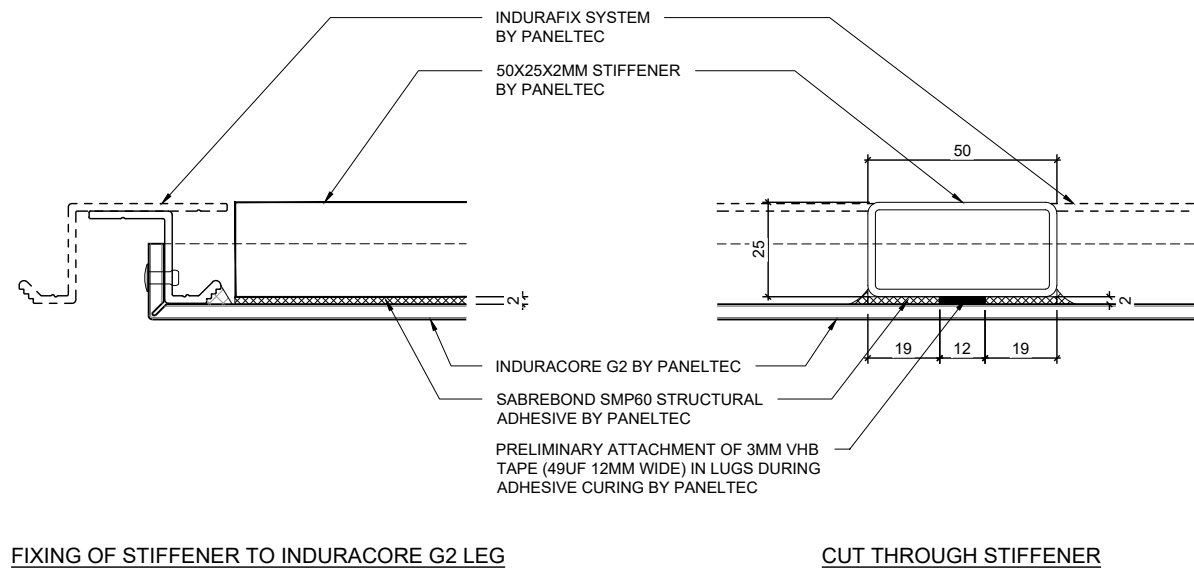














Auckland Office
5 Piermark Drive
Rosedale
Auckland 0632
0508 726 358

Head Office
10 Mako Street,
Dargaville
09 439 4357

info@paneltec.co.nz
www.paneltec.co.nz

